

First Year Experience Enrollment Report - 2001/02 to 2005/06

Summary: The first-year cohorts consisted of students who: were transfer, degree and/or certificate-seeking or educational goal undecided; were continuing, transfer, first-time, or returning; had not completed an associate's degree or higher; and completed 24 or fewer units at Skyline College. Unduplicated headcount of first-year students has steadily declined 17% since its peak in 2002/03. Over the past five years, first-year students accounted for 38% of the total unduplicated headcount at Skyline College, with higher headcount in fall terms than spring terms. Mirroring the demographic make-up of the college, more than half of first-year students were female, three-quarters enrolled part-time (less than 12 units), and were ethnically diverse. However, first-year students were younger (63% age 18-22 vs. 45% collegewide), enrolled in more day classes (47% vs. 41%), and were more likely to be transfer-seeking (68% vs. 55%).

Enrollment by Term

SUMMER					FALL					SPRING				
2001	2002	2003	2004	2005	2001	2002	2003	2004	2005	2002	2003	2004	2005	2006
2,550	2,800	2,573	2,479	2,036	3,550	3,879	3,622	3,390	3,387	3,372	3,480	3,319	3,316	3,035

Enrollment by Gender

	2001/02		2002/03		2003/04		2004/05		2005/06		Change 04/05-05/06	5 Year Row Total & Average	
Female	5,026	52%	5,400	53%	4,841	51%	4,783	52%	4,306	50%	-10%	24,356	51%
Male	4,383	47%	4,703	47%	4,613	49%	4,334	48%	4,004	48%	-8%	22,037	48%
Unreported	63	1%	56	1%	60	1%	68	1%	148	2%	118%	395	1%
Column Total	9,472	100%	10,159	100%	9,514	100%	9,185	100%	8,458	100%	-8%	46,788	100%

Enrollment by Ethnicity

	2001/02		2002/03		2003/04		2004/05		2005/06		Change 04/05-05/06	5 Year Row Total & Average	
African American	341	4%	403	4%	427	5%	434	5%	369	4%	-15%	1,974	4%
Asian	2,826	32%	2,789	29%	2,669	29%	2,639	29%	2,457	30%	-7%	13,380	30%
Filipino	1,666	18%	1,906	20%	1,795	20%	1,732	19%	1,554	19%	-10%	8,653	19%
Hispanic	1,927	19%	2,093	20%	1,915	19%	1,827	19%	1,625	19%	-11%	9,387	19%
Native American	48	1%	52	1%	48	1%	38	0%	41	0%	8%	227	0%
Other	278	3%	284	3%	282	3%	295	3%	276	3%	-6%	1,415	3%
White	2,181	21%	2,366	22%	2,141	21%	1,939	21%	1,646	19%	-15%	10,273	21%
Unreported	205	2%	266	3%	237	3%	281	3%	490	6%	74%	1,479	3%
Column Total	9,472	100%	10,159	100%	9,514	100%	9,185	100%	8,458	100%	-8%	46,788	100%

Enrollment by Age

	2001/02		2002/03		2003/04		2004/05		2005/06		Change 04/05-05/06	5 Year Row Total & Average	
Under 18	140	2%	150	1%	214	2%	145	2%	165	2%	14%	814	2%
Age 18-22	5,416	61%	5,831	61%	5,763	62%	5,686	64%	5,219	64%	-8%	27,915	63%
Age 23-28	1,893	21%	2,073	22%	1,884	21%	1,771	20%	1,640	20%	-7%	9,261	21%
Age 29-39	1,089	9%	1,142	9%	963	8%	950	9%	842	9%	-11%	4,986	9%
Age 40-49	606	5%	631	4%	465	4%	394	3%	363	3%	-8%	2,459	4%
Age 50-59	220	2%	239	2%	162	1%	168	1%	154	1%	-8%	943	2%
Age 60+	108	1%	93	1%	63	0%	71	1%	75	1%	6%	410	1%
Column Total	9,472	100%	10,159	100%	9,514	100%	9,185	100%	8,458	100%	-8%	46,788	100%

Source: SMCCD Data Warehouse

*Note: Counts and percents are based on census figures for summer, fall and spring except where noted.

Enrollment by Status

	2001/02		2002/03		2003/04		2004/05		2005/06		Change 04/05-05/06	5 Year Row Total & Average	
Continuing	4,685	49%	5,260	51%	5,080	53%	5,282	56%	4,824	57%	-9%	25,131	53%
First-Time	1,711	19%	1,594	16%	1,650	17%	1,333	16%	1,412	18%	6%	7,700	17%
First-Time Transfer	1,293	16%	1,342	15%	1,187	14%	1,031	12%	841	11%	-18%	5,694	14%
Returning	1,350	13%	1,483	13%	1,197	12%	1,152	12%	918	10%	-20%	6,100	12%
Returning Transfer	433	4%	480	4%	400	4%	387	4%	463	5%	20%	2,163	4%
Column Total	9,472	100%	10,159	100%	9,514	100%	9,185	100%	8,458	100%	-8%	46,788	100%

Enrollment by Units (Fall and Spring only)

	2001/02		2002/03		2003/04		2004/05		2005/06		Change 04/05-05/06	5 Year Row Total & Average	
Full-time	1,568	24%	1,747	25%	1,777	26%	1,641	26%	1,595	26%	-3%	8,328	25%
Part-time	5,354	76%	5,612	75%	5,164	74%	5,065	74%	4,827	74%	-5%	26,022	75%
Column Total	6,922	100%	7,359	100%	6,941	100%	6,706	100%	6,422	100%	-4%	34,350	100%

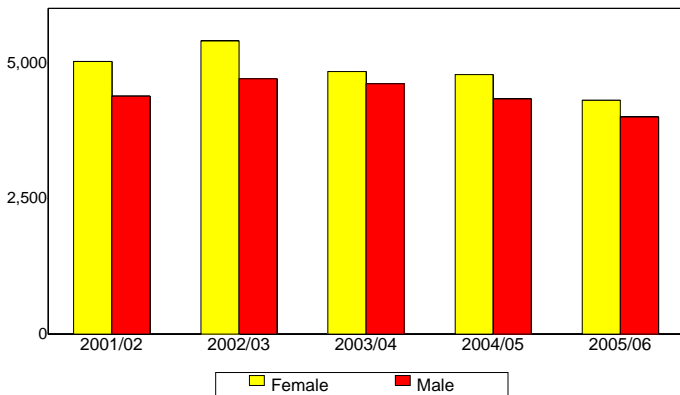
Enrollment by Course-Taking Pattern

	2001/02		2002/03		2003/04		2004/05		2005/06		Change 04/05-05/06	5 Year Row Total & Average	
Day	4,001	43%	4,473	45%	4,665	49%	4,343	48%	4,026	49%	-7%	21,508	47%
Evening	3,777	39%	3,618	34%	2,915	30%	2,845	30%	2,610	29%	-8%	15,765	33%
Day and Evening	1,694	18%	2,068	21%	1,934	21%	1,997	22%	1,822	22%	-9%	9,515	21%
Column Total	9,472	100%	10,159	100%	9,514	100%	9,185	100%	8,458	100%	-8%	46,788	100%

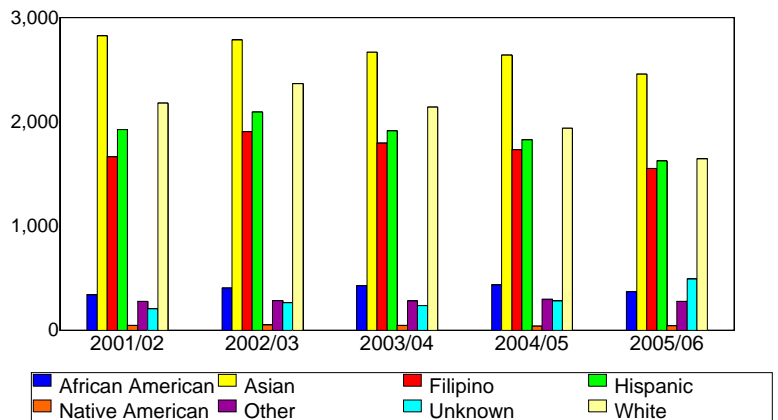
Enrollment by Educational Goal

	2001/02		2002/03		2003/04		2004/05		2005/06		Change 04/05-05/06	5 Year Row Total & Average	
Transfer	5,945	64%	6,546	65%	6,380	68%	6,371	70%	6,067	72%	-5%	31,309	68%
AA/AS w/o Transfer	1,007	10%	985	9%	855	8%	755	8%	570	7%	-25%	4,172	8%
Certificate w/o Transfer	762	8%	780	7%	677	7%	481	5%	318	4%	-34%	3,018	6%
Undecided	1,758	19%	1,848	19%	1,602	17%	1,578	17%	1,503	18%	-5%	8,289	18%
Column Total	9,472	100%	10,159	100%	9,514	100%	9,185	100%	8,458	100%	-8%	46,788	100%

Enrollment by Gender



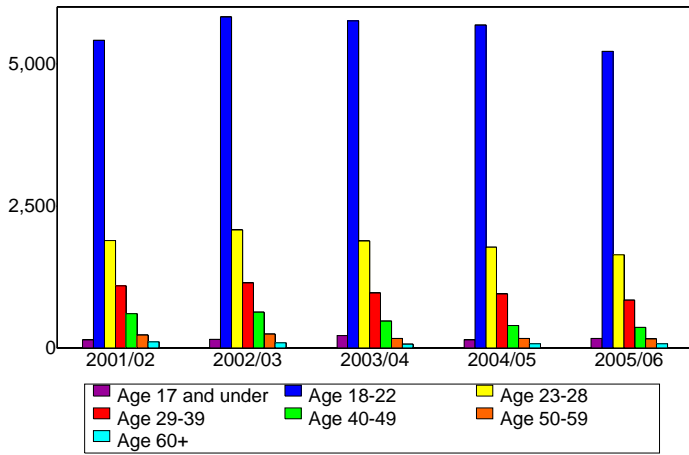
Enrollment by Ethnicity



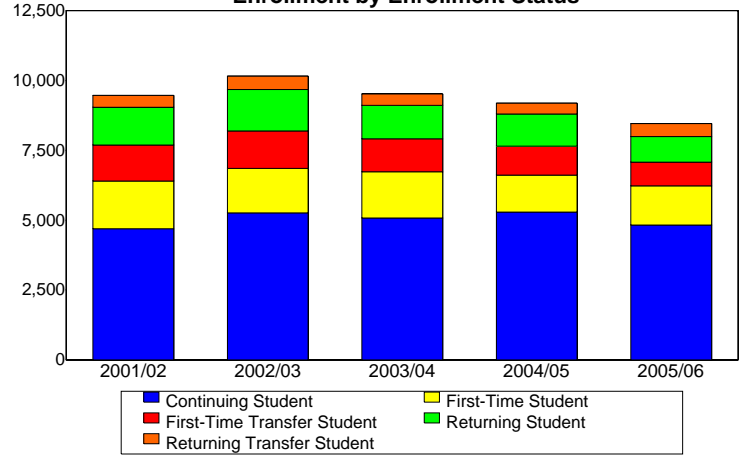
Source: SMCCD Data Warehouse

*Note: Counts and percents are based on census figures for summer, fall and spring except where noted.

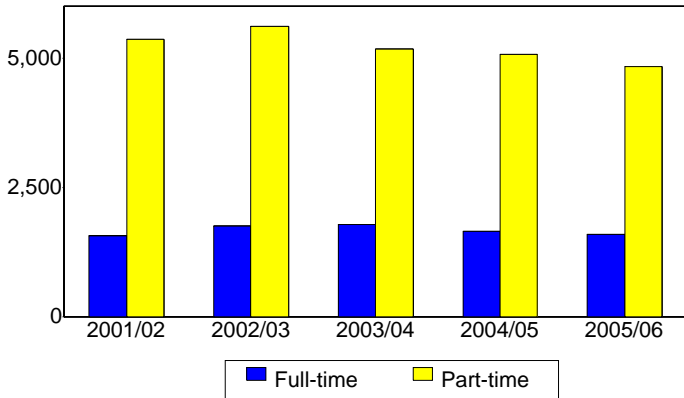
Enrollment by Student Age



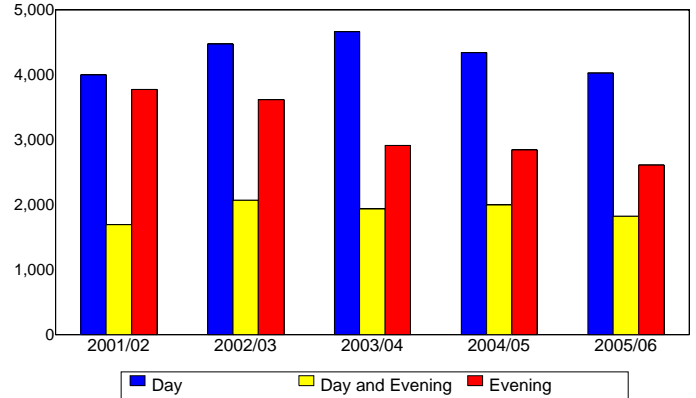
Enrollment by Enrollment Status



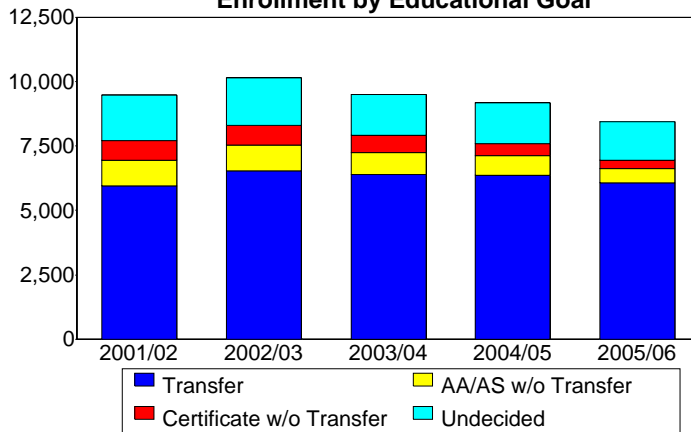
Enrollment by Units



Enrollment by Course-Taking Pattern



Enrollment by Educational Goal

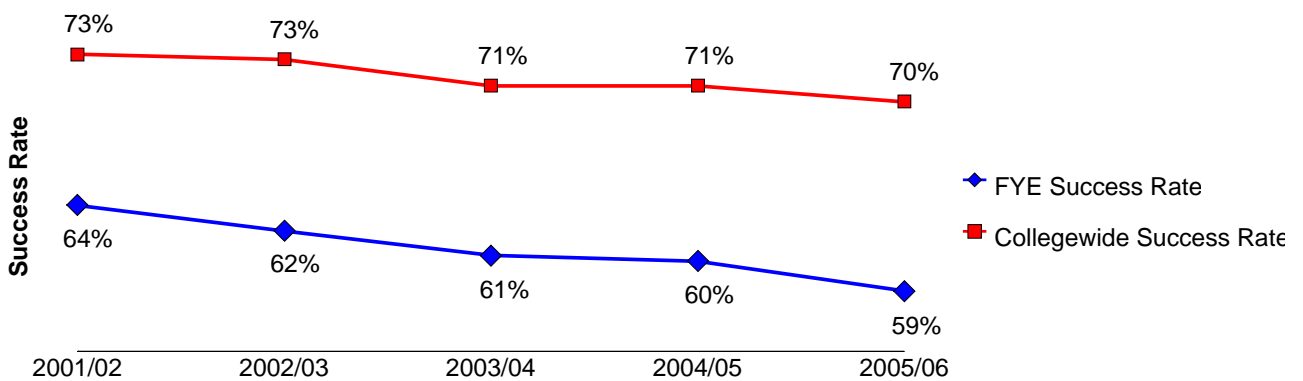
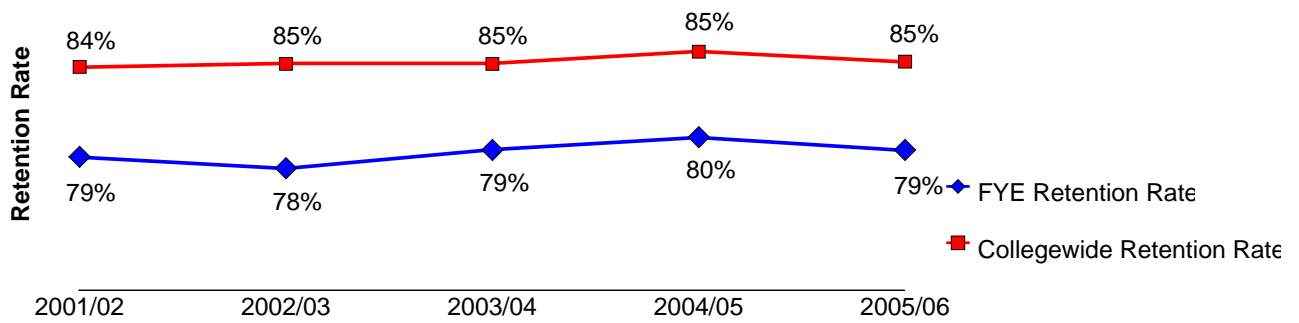


Source: SMCCD Data Warehouse

First Year Experience - Overall Success and Retention 2001/02 to 2005/06

Summary: The first-year cohorts consisted of students who: were transfer, degree and/or certificate-seeking or educational goal undecided; were continuing, transfer, first-time, or returning; had not completed an associate's degree or higher; and completed 24 or fewer units at Skyline College. The overall retention rate for first-year students held steady at approximately 79% during the past five years, but remained consistently 5% to 7% below the collegewide retention rate. The overall success rate for first-year students declined from 64% in 2001/02 to 59% in 2005/06 and stayed 9% to 11% below the collegewide success rate. For first-year students, success rates in high-enrolled courses were generally 6% to 12% lower than their overall success rate.

	Head Count	Retention Count	Retention Rate	Success Count	Success Rate
2001/02	19,523	15,420	79%	12,461	64%
2002/03	21,463	16,807	78%	13,366	62%
2003/04	19,503	15,488	79%	11,857	61%
2004/05	18,733	15,018	80%	11,326	60%
2005/06	17,761	14,102	79%	10,418	59%



Source: SMCCD Data Warehouse

*Note: Figures include summer, fall and spring terms.

Retention Count: Number of students with A,B,C,D,F,CR,NC, I grades.

Retention Rate: The percentage of students who complete a course with a grade of A,B,C,D,F,CR,NC, I out of total enrollments.

Success Count: Number of students with A,B,C,CR grades.

Success Rate: The percentage of students who complete a course with a grade of A,B,C,CR out of total enrollments.

First Year Experience - Success and Retention for High-Enrolled Courses 2001/02 to 2005/06

English 100

	Head Count	Retention Count	Retention Rate	Success Count	Success Rate
2001/02	769	593	77%	514	67%
2002/03	764	575	75%	484	63%
2003/04	638	501	79%	428	67%
2004/05	614	475	77%	350	57%
2005/06	754	610	81%	445	59%

English 826

	Head Count	Retention Count	Retention Rate	Success Count	Success Rate
2002/03	396	284	72%	199	50%
2003/04	355	258	73%	202	57%
2004/05	331	276	83%	178	54%
2005/06	346	274	79%	184	53%

English 836

	Head Count	Retention Count	Retention Rate	Success Count	Success Rate
2002/03	587	458	78%	334	57%
2003/04	516	387	75%	285	55%
2004/05	455	319	70%	216	47%
2005/06	384	295	77%	184	48%

Math 110

	Head Count	Retention Count	Retention Rate	Success Count	Success Rate
2001/02	370	275	74%	172	46%
2002/03	451	290	64%	210	47%
2003/04	449	287	64%	186	41%
2004/05	436	293	67%	190	44%
2005/06	408	313	77%	190	47%

Math 120

	Head Count	Retention Count	Retention Rate	Success Count	Success Rate
2001/02	463	326	70%	226	49%
2002/03	444	311	70%	201	45%
2003/04	470	341	73%	216	46%
2004/05	442	336	76%	212	48%
2005/06	371	269	73%	174	47%

Psychology 100

	Head Count	Retention Count	Retention Rate	Success Count	Success Rate
2001/02	470	393	84%	283	60%
2002/03	483	398	82%	300	62%
2003/04	445	366	82%	260	58%
2004/05	417	349	84%	226	54%
2005/06	409	337	82%	215	53%

Source: SMCCD Data Warehouse

*Note: Includes summer, fall and spring terms.

Retention Count: Number of students with A,B,C,D,F,CR,NC, I grades.

Retention Rate: The percentage of students who complete a course with a grade of A,B,C,D,F,CR,NC, I out of total enrollments.

Success Count: Number of students with A,B,C,CR grades.

Success Rate: The percentage of students who complete a course with a grade of A,B,C,CR out of total enrollments.