

Accounting Department Student Characteristics 2006/07 through 2010/11

Unique Headcount by Term

FA06	FA07	FA08	FA09	FA10	SP07	SP08	SP09	SP10	SP11	SU06	SU07	SU08	SU09	SU10
496	533	528	557	522	450	506	568	531	569	245	265	307	295	286

Unique Headcount by Gender

	2006/07		2007/08		2008/09		2009/10		2010/11		Change 0-1%/\$-1%	5 Year Row Total & Average
Female	493	52%	515	50%	571	50%	565	51%	561	52%	-1%	2,705 51%
Male	421	46%	440	48%	490	46%	484	46%	476	45%	-2%	2,311 46%
Unreported	18	2%	24	3%	41	4%	34	3%	30	3%	-12%	147 3%
Column Total	932	100%	979	100%	1,102	100%	1,083	100%	1,067	100%	-1%	5,163 100%

Unique Headcount by Ethnicity

	2006/07		2007/08		2008/09		2009/10		2010/11		Change 0-1%/\$-1%	5 Year Row Total & Average
African American	24	2%	16	2%	27	2%	29	3%	29	3%	0%	125 2%
Asian	394	48%	404	45%	416	39%	402	41%	414	41%	3%	2,030 42%
Filipino	141	15%	150	15%	208	18%	185	17%	160	15%	-14%	844 16%
Hispanic	121	12%	139	14%	147	13%	153	13%	153	13%	0%	713 13%
White	165	15%	174	15%	182	17%	190	17%	176	15%	-7%	887 16%
Other	26	3%	22	2%	3	0%	1	0%	1	0%	0%	53 1%
Unknown	61	6%	79	8%	119	11%	124	11%	134	12%	8%	517 10%
Column Total	932	100%	984	100%	1,102	100%	1,084	100%	1,067	100%	-2%	5,169 100%

Unique Headcount by Age

	2006/07		2007/08		2008/09		2009/10		2010/11		Change 0-1%/\$-1%	5 Year Row Total & Average
Under 18	12	1%	8	1%	21	2%	14	1%	13	1%	-7%	68 1%
Age 18-22	408	48%	402	46%	408	44%	415	46%	433	51%	4%	2,066 47%
Age 23-28	270	30%	308	31%	340	29%	324	28%	317	26%	-2%	1,559 28%
Age 29-39	132	13%	156	13%	195	15%	191	16%	175	14%	-8%	849 14%
Age 40-49	77	5%	69	5%	91	7%	79	5%	87	5%	10%	403 5%
Age 50-59	45	3%	46	3%	53	3%	59	3%	39	2%	-34%	242 3%
Age 60+	7	0%	9	1%	11	0%	17	1%	19	1%	12%	63 1%
Column Total	951	100%	998	100%	1,119	100%	1,099	100%	1,083	100%	-1%	5,250 100%

Source: SMCCCD Data Warehouse

*Note: Counts and percents are based on census figures.

**Note: The variations in total numbers each year within the demographic segments are due to missing data points, and, in the case of age, also due to students crossing a category threshold during a year (18-22 in Fall, 23-28 in Spring).

Unique Headcount by Status

	2006/07		2007/08		2008/09		2009/10		2010/11		Change 09/10-10/11	5 Year Row Total & Average
Continuing	638	70%	683	69%	730	67%	728	66%	779	75%	7%	3,558 69%
Currently K-12	9	1%	7	1%	11	1%	12	1%	7	1%	-42%	46 1%
First-Time	38	4%	31	4%	30	4%	17	2%	28	3%	65%	144 3%
First-Time Transfer	88	10%	98	13%	141	16%	156	17%	118	11%	-24%	501 14%
Returning	104	8%	115	7%	151	9%	135	9%	112	7%	-17%	517 8%
Returning Transfer	87	6%	98	6%	89	4%	102	5%	72	4%	-29%	448 5%
Column Total	964	100%	1,032	100%	1,152	100%	1,150	100%	1,116	100%	-3%	5,414 100%

Unique Headcount by Course-Taking Pattern (Fall and Spring only)

	2006/07		2007/08		2008/09		2009/10		2010/11		Change 09/10-10/11	5 Year Row Total & Average
Day	384	39%	378	37%	383	35%	386	36%	377	34%	-2%	1,908 36%
Day and Evening	47	4%	50	4%	49	3%	48	3%	29	2%	-40%	223 3%
Evening	588	57%	640	59%	767	61%	738	60%	752	63%	2%	3,485 61%
Column Total	1,019	100%	1,068	100%	1,199	100%	1,172	100%	1,158	100%	-1%	5,616 100%

Unique Headcount by Educational Goal

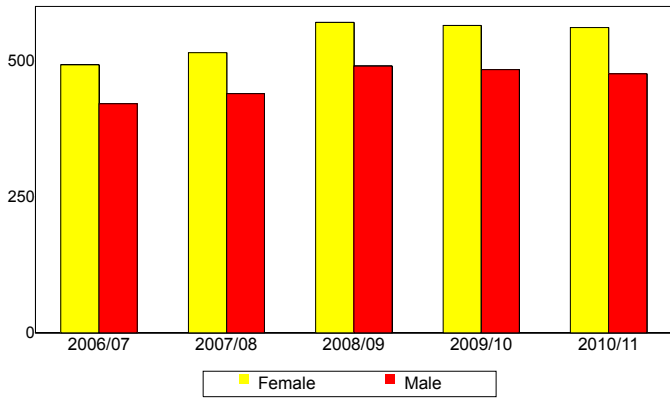
	2006/07		2007/08		2008/09		2009/10		2010/11		Change 09/10-10/11	5 Year Row Total & Average
Transfer	667	73%	477	50%	492	47%	450	44%	524	53%	16%	2,610 52%
AA/AS w/o Transfer	39	4%	41	3%	42	3%	48	4%	40	3%	-17%	210 3%
Certificate w/o Transfer	13	2%	26	2%	24	2%	33	3%	25	2%	-24%	121 2%
Acquire/Update Job Skills	106	9%	111	9%	139	12%	144	10%	112	8%	-22%	612 10%
Complete HS Credits	2	0%	6	1%	7	1%	10	1%	7	1%	-30%	32 1%
Educational Development	53	4%	42	4%	54	3%	64	6%	57	4%	-11%	270 4%
Formulate Career Plans/Goals	3	0%	3	0%	18	1%	15	1%	12	1%	-20%	51 1%
Improve Basic Skills	3	0%	17	2%	14	1%	29	2%	22	2%	-24%	85 2%
Maintain Certificate/Licensure	1	0%	6	1%	19	1%	17	1%	20	1%	18%	63 1%
Undecided/Unreported	75	7%	294	28%	320	28%	294	28%	259	24%	-12%	1,242 24%
Column Total	962	100%	1,023	100%	1,129	100%	1,104	100%	1,078	100%	-2%	5,296 100%

Source: SMCCCD Data Warehouse

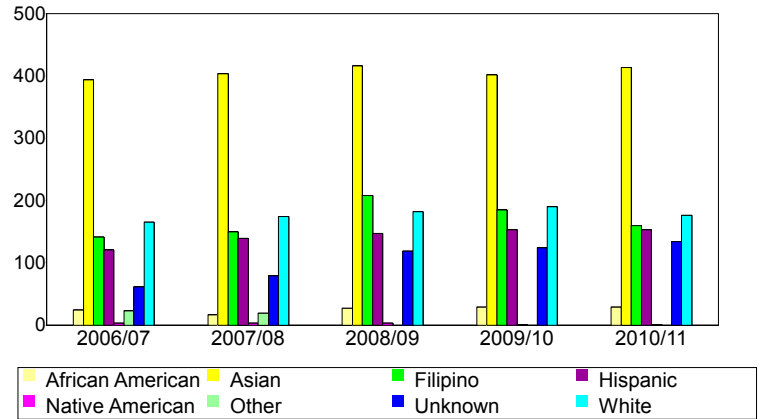
*Note: Counts and percents are based on census figures for summer, fall and spring.

**Note: The variations in total numbers each year within the Status, Course-Taking, and Educational Goal tables are due to missing data points and also due to students changing Status, Pattern, or Educational Goal within a given year - e.g. "First Time Student" in Fall and "Continuing Student" in Spring.

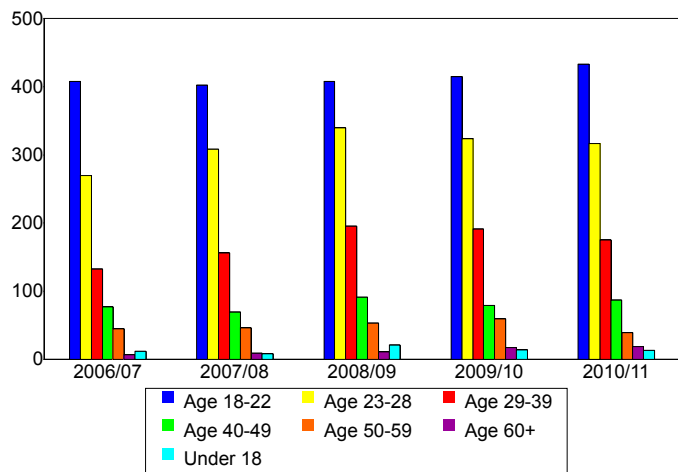
Unique Headcount by Gender



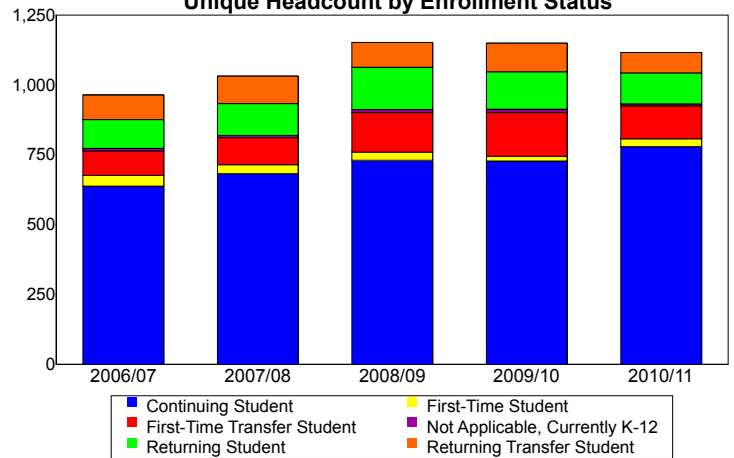
Unique Headcount by Ethnicity



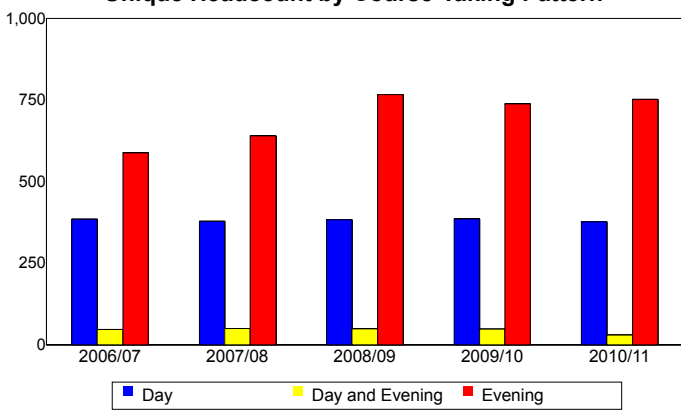
Unique Headcount by Student Age



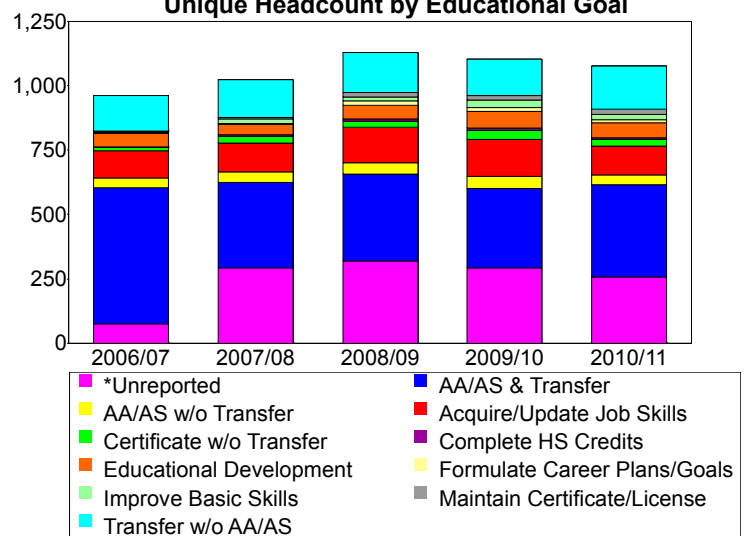
Unique Headcount by Enrollment Status



Unique Headcount by Course-Taking Pattern



Unique Headcount by Educational Goal



Source: SMCCCD Data Warehouse