

Administration of Justice Department Productivity: By Year and By Term 2006/07 through 2010/11

	Census Headcount	End of Term Headcount	FTEF	FTEs	WSCH	Load	Sections	Max Enroll
2006/07	565	447	2.60	56.80	1,704	655	15	580
2007/08	607	498	2.80	60.32	1,809	646	16	625
2008/09	659	560	3.00	67.33	2,020	673	17	670
2009/10	704	628	2.80	70.30	2,109	753	18	637
2010/11	741	678	2.83	74.53	2,236	789	18	635

	Census Headcount	End of Term Headcount	FTEF	FTEs	WSCH	Load	Sections	Max Enroll
Fall 2006	246	204	1.10	24.60	738	671	6	248
Fall 2007	257	214	1.10	25.70	771	701	6	248
Fall 2008	270	237	1.10	27.43	823	748	6	248
Fall 2009	298	262	1.20	29.47	884	737	7	273
Fall 2010	278	264	1.13	27.88	836	738	7	251
Spring 2007	261	192	1.10	26.10	783	712	7	248
Spring 2008	285	221	1.30	28.50	855	658	8	293
Spring 2009	346	282	1.50	35.64	1,069	713	9	338
Spring 2010	322	288	1.17	32.89	987	846	8	250
Spring 2011	372	327	1.30	37.48	1,125	865	9	295
Summer 2006	58	51	0.40	6.10	183	457	2	85
Summer 2007	65	63	0.40	6.12	183	459	2	85
Summer 2008	43	41	0.40	4.26	128	319	2	85
Summer 2009	84	78	0.43	7.94	238	550	3	115
Summer 2010	91	87	0.40	9.17	275	688	2	90

Source: SMCCCD Data Warehouse

Census Headcount: Number of duplicated headcount at final census.

End of Term Headcount: Number of duplicated headcount at the end of the term.

FTEF: Total number of full time equivalent faculty assigned.

FTEs: Total number of full time equivalent students enrolled at first census.

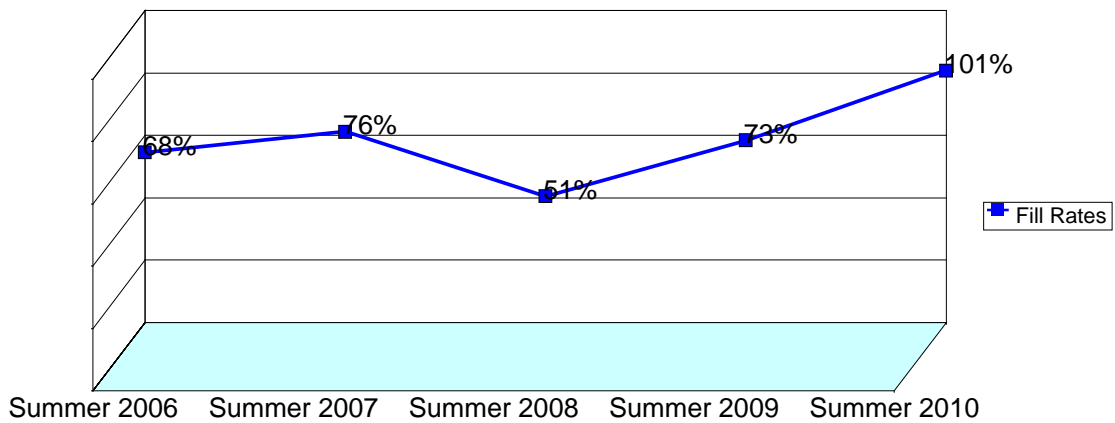
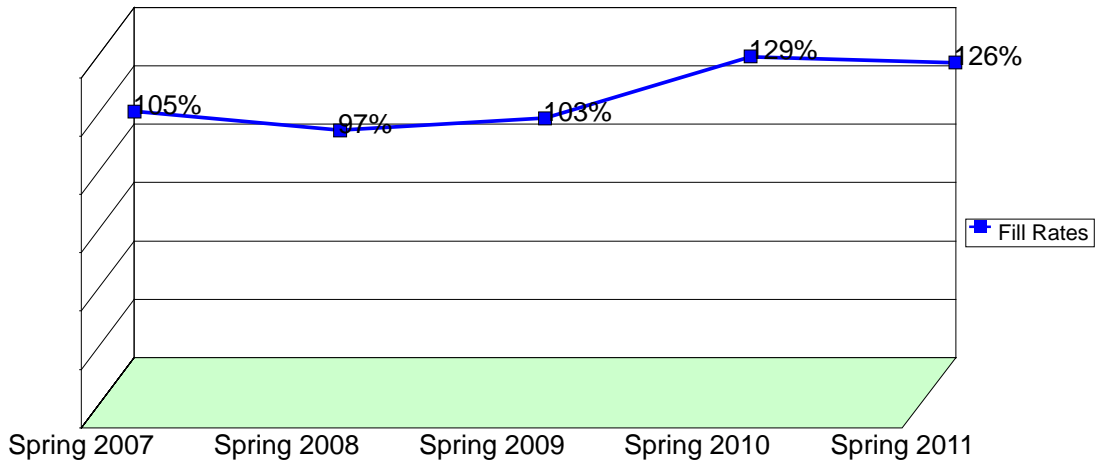
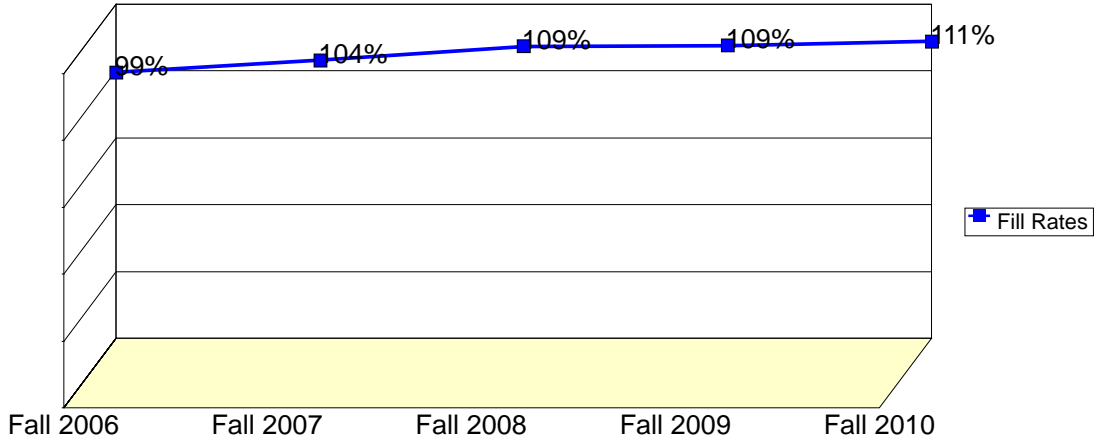
WSCH: Weekly student contact hours generated by census enrollments.

Load: The ratio of WSCH to FTEF, used to measure productivity.

Sections: Total number of sections offered per semester.

Max Enroll: The enrollment capacity or maximum enrollment as defined in curriculum.

Department Fill Rates by Term



Source: SMCCCD Data Warehouse

Fill Rates: The percent a class fills/enrolls based on capacity or enrollment maximum defined in the curriculum (does not include positive attendance or open entry/open exit classes).

Department Productivity: Term by Course

				Census Headcount	End of Term Headcount	FTEF	FTES	WSCH	Load	Sections	Max Enroll
Fall 2006	ADMJ	100	Intro to Admin of Justice	86	72	0.40	8.60	258	645	2	90
		108	Community Relations	42	37	0.10	4.20	126	1,260	1	45
		110	Police Report Writing	36	24	0.20	3.60	108	540	1	45
		123	Concepts of Enforcement	36	31	0.20	3.60	108	540	1	45
		135	Narcotics Investigation	46	40	0.20	4.60	138	690	1	45
Fall 2007	ADMJ	100	Intro to Admin of Justice	82	66	0.40	8.20	246	615	2	90
		108	Community Relations	44	40	0.10	4.40	132	1,320	1	45
		110	Police Report Writing	45	37	0.20	4.50	135	675	1	45
		123	Concepts of Enforcement	34	30	0.20	3.40	102	510	1	45
		135	Narcotics Investigation	52	41	0.20	5.20	156	780	1	45
Fall 2008	ADMJ	100	Intro to Admin of Justice	85	65	0.40	8.93	268	670	2	90
		108	Community Relations	43	40	0.10	4.30	129	1,290	1	45
		110	Police Report Writing	50	49	0.20	5.00	150	750	1	45
		123	Concepts of Enforcement	48	41	0.20	4.80	144	720	1	45
		135	Narcotics Investigation	44	42	0.20	4.40	132	660	1	45
Fall 2009	ADMJ	100	Intro to Admin of Justice	90	75	0.40	9.40	282	705	2	90
		108	Community Relations	48	45	0.10	4.80	144	1,440	1	45
		110	Police Report Writing	46	42	0.20	4.60	138	690	1	45
		123	Concepts of Enforcement	46	42	0.20	4.60	138	690	1	45
		135	Narcotics Investigation	51	45	0.20	5.10	153	765	1	45
		670	Cooperative Education	17	13	0.10	0.97	29	290	1	25
Fall 2010	ADMJ	100	Intro to Admin of Justice	80	73	0.40	8.38	251	629	2	90
		108	Community Relations	47	46	0.10	4.70	141	1,410	1	45
		110	Police Report Writing	51	49	0.20	5.10	153	765	1	45
		123	Concepts of Enforcement	48	47	0.20	4.80	144	720	1	45
		135	Narcotics Investigation	46	44	0.20	4.60	138	690	1	45
		670	Cooperative Education	6	5	0.03	0.30	9	270	1	3
Spring 2007	ADMJ	100	(CP1)Intro to Admin of Justice	26	22	0.20	2.60	78	390	1	45
			Intro to Admin of Justice	45	21	0.20	4.50	135	675	1	45
		104	Concepts of Criminal Law	49	40	0.10	4.90	147	1,470	1	45
		106	Legal Aspects of Evidence	35	27	0.10	3.50	105	1,050	1	45
		120	Criminal Investigation	44	37	0.10	4.40	132	1,320	1	45
		125	Juvenile Procedures	44	33	0.20	4.40	132	660	1	45
		180	Criminal Identification	18	12	0.20	1.80	54	270	1	45
Spring 2008	ADMJ	100	(CP1)Intro to Admin of Justice	37	27	0.20	3.70	111	555	1	45
			Intro to Admin of Justice	42	26	0.20	4.20	126	630	1	45
		102	CP4Princ/Procedures of Justice	41	31	0.20	4.10	123	615	1	45
		104	Concepts of Criminal Law	50	43	0.10	5.00	150	1,500	1	45
		106	Legal Aspects of Evidence	38	32	0.10	3.80	114	1,140	1	45
		120	Criminal Investigation	43	36	0.10	4.30	129	1,290	1	45
		125	Juvenile Procedures	23	18	0.20	2.30	69	345	1	45
		180	Criminal Identification	11	8	0.20	1.10	33	165	1	45
Spring 2009	ADMJ	100	Intro to Admin of Justice	87	56	0.40	9.05	271	679	2	90
		102	CP4Princ/Procedures of Justice	42	34	0.20	4.20	126	630	1	45
		104	Concepts of Criminal Law	45	38	0.10	4.50	135	1,350	1	45
		106	Legal Aspects of Evidence	42	41	0.10	4.20	126	1,260	1	45
		110	Police Report Writing	37	33	0.20	4.32	130	648	1	45

				Census Headcount	End of Term Headcount	FTEF	FTES	WSCH	Load	Sections	Max Enroll
		120	Criminal Investigation	41	40	0.10	4.10	123	1,230	1	45
		125	Juvenile Procedures	41	35	0.20	4.10	123	615	1	45
		180	Criminal Identification	11	5	0.20	1.17	35	176	1	45
Spring 2010	ADMJ	100	Intro to Admin of Justice	46	38	0.20	4.91	147	736	1	45
		102	CP4Princ/Procedures of Justice	43	40	0.20	4.30	129	645	1	45
		104	Concepts of Criminal Law	45	42	0.10	4.50	135	1,350	1	45
		106	Legal Aspects of Evidence	40	37	0.10	4.00	120	1,200	1	45
		110	Police Report Writing	49	40	0.20	5.72	172	858	1	45
		120	Criminal Investigation	44	41	0.10	4.40	132	1,320	1	45
		125	Juvenile Procedures	44	41	0.20	4.40	132	660	1	45
		670	Cooperative Education	11	9	0.07	0.67	20	300	1	2
Spring 2011	ADMJ	100	Intro to Admin of Justice	83	68	0.40	8.30	249	623	2	90
		102	CP4Princ/Procedures of Justice	44	39	0.20	4.40	132	660	1	45
		104	Concepts of Criminal Law	50	50	0.10	5.00	150	1,500	1	45
		106	Legal Aspects of Evidence	48	43	0.10	4.80	144	1,440	1	45
		110	Police Report Writing	45	37	0.20	5.25	158	788	1	45
		120	Criminal Investigation	45	44	0.10	4.50	135	1,350	1	45
		125	Juvenile Procedures	47	40	0.20	4.70	141	705	1	45
		670	Cooperative Education	10	6	0.00	0.53	16	#INF	1	2
Summer 2006	ADMJ	100	Intro to Admin of Justice	27	23	0.20	2.84	85	426	1	40
		102	Princ/Procedures of Justice	31	28	0.20	3.26	98	489	1	45
Summer 2007	ADMJ	100	Intro to Admin of Justice	21	21	0.20	1.98	59	296	1	40
		102	Princ/Procedures of Justice	44	42	0.20	4.14	124	621	1	45
Summer 2008	ADMJ	100	Intro to Admin of Justice	31	30	0.20	3.07	92	461	1	40
		102	Princ/Procedures of Justice	12	11	0.20	1.19	36	178	1	45
Summer 2009	ADMJ	100	Intro to Admin of Justice	43	39	0.20	4.42	133	663	1	45
		102	Princ/Procedures of Justice	31	29	0.20	3.19	96	478	1	45
		670	Cooperative Education	10	10	0.03	0.33	10	300	1	25
Summer 2010	ADMJ	100	Intro to Admin of Justice	47	44	0.20	4.74	142	710	1	45
		102	Princ/Procedures of Justice	44	43	0.20	4.43	133	665	1	45

