

Astronomy Department Productivity: By Year and By Term 2006/07 through 2010/11

	Census Headcount	End of Term Headcount	FTEF	FTES	WSCH	Load	Sections	Max Enroll
2006/07	29	24	0.20	2.90	87	435	1	55
2007/08	101	78	0.40	12.35	371	926	3	155
2008/09	191	156	0.60	22.04	661	1,102	6	395
2009/10	316	262	1.00	37.32	1,120	1,120	8	382
2010/11	288	233	1.40	29.25	878	627	7	280

	Census Headcount	End of Term Headcount	FTEF	FTES	WSCH	Load	Sections	Max Enroll
Fall 2007	45	33	0.20	6.75	203	1,013	1	40
Fall 2008	75	61	0.20	9.90	297	1,485	2	115
Fall 2009	126	103	0.40	16.65	500	1,249	3	155
Fall 2010	125	97	0.60	12.95	389	648	3	120
Spring 2007	29	24	0.20	2.90	87	435	1	55
Spring 2008	56	45	0.20	5.60	168	840	2	115
Spring 2009	79	66	0.20	8.46	254	1,269	2	115
Spring 2010	135	109	0.40	14.04	421	1,053	3	150
Spring 2011	163	136	0.80	16.30	489	611	4	160
Summer 2008	37	29	0.20	3.68	110	552	2	165
Summer 2009	55	50	0.20	6.63	199	995	2	77

Source: SMCCCD Data Warehouse

Census Headcount: Number of duplicated headcount at final census.

End of Term Headcount: Number of duplicated headcount at the end of the term.

FTEF: Total number of full time equivalent faculty assigned.

FTES: Total number of full time equivalent students enrolled at first census.

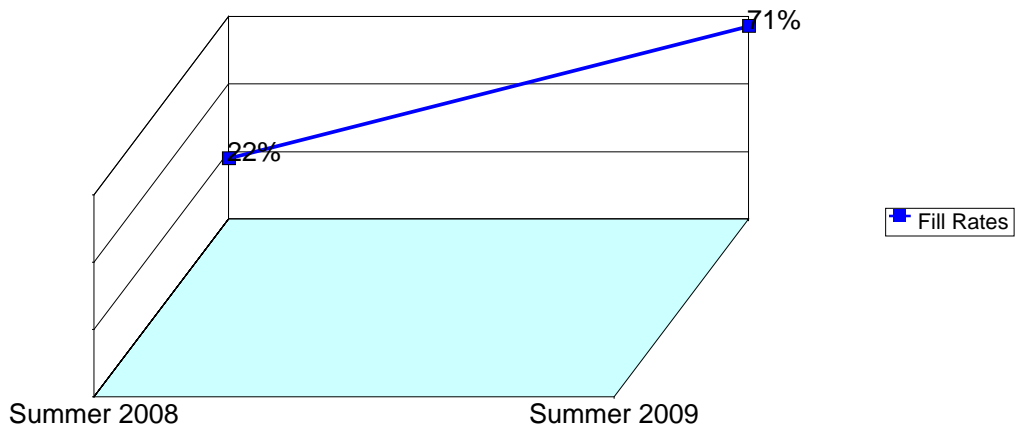
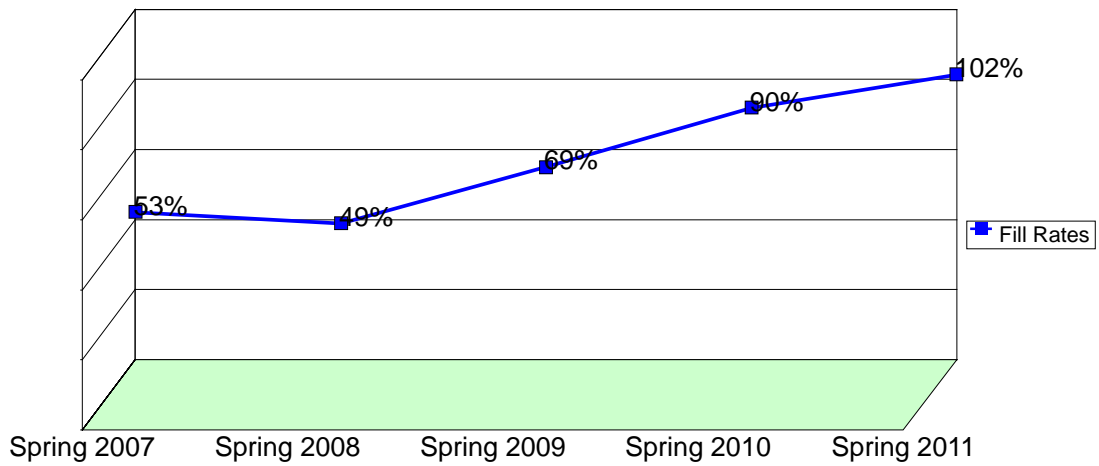
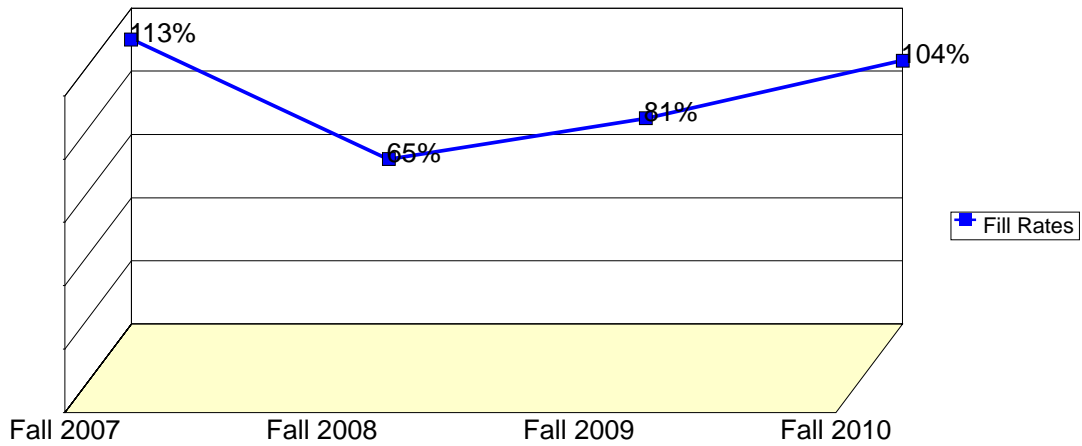
WSCH: Weekly student contact hours generated by census enrollments.

Load: The ratio of WSCH to FTEF, used to measure productivity.

Sections: Total number of sections offered per semester.

Max Enroll: The enrollment capacity or maximum enrollment as defined in curriculum.

Department Fill Rates by Term



Source: SMCCCD Data Warehouse

Fill Rates: The percent a class fills/enrolls based on capacity or enrollment maximum defined in the curriculum (does not include positive attendance or open entry/open exit classes).

Department Productivity: Term by Course

				Census Headcount	End of Term Headcount	FTEF	FTES	WSCH	Load	Sections	Max Enroll
Fall 2007	ASTR	100	Introduction To Astronomy	45	33	0.20	6.75	203	1,013	1	40
Fall 2008	ASTR	100	Introduction To Astronomy	75	61	0.20	9.90	297	1,485	2	115
Fall 2009	ASTR	100	Introduction To Astronomy	126	103	0.40	16.65	500	1,249	3	155
Fall 2010	ASTR	100	Introduction To Astronomy	125	97	0.60	12.95	389	648	3	120
Spring 2007	ASTR	100	Introduction To Astronomy	29	24	0.20	2.90	87	435	1	55
Spring 2008	ASTR	100	Introduction To Astronomy	34	31	0.20	3.40	102	510	1	40
			Introduction to Astronomy	22	14	0.00	2.20	66	#INF	1	75
Spring 2009	ASTR	100	Introduction To Astronomy	56	50	0.20	6.16	185	924	1	40
			Introduction to Astronomy	23	16	0.00	2.30	69	#INF	1	75
Spring 2010	ASTR	100	Introduction To Astronomy	90	70	0.40	9.54	286	716	2	75
			Introduction to Astronomy	45	39	0.00	4.50	135	#INF	1	75
Spring 2011	ASTR	100	Introduction To Astronomy	134	115	0.60	13.40	402	670	3	120
			Introduction to Astronomy	29	21	0.20	2.90	87	435	1	40
Summer 2008	ASTR	100	Introduction To Astronomy	37	29	0.20	3.68	110	552	2	165
Summer 2009	ASTR	100	Introduction To Astronomy	34	32	0.20	4.53	136	680	1	40
			Introduction to Astronomy	21	18	0.00	2.10	63	#INF	1	37

