

Business Department Productivity: By Year and By Term 2006/07 through 2010/11

	Census Headcount	End of Term Headcount	FTEF	FTES	WSCH	Load	Sections	Max Enroll
2006/07	1,580	1,240	10.61	173.68	5,210	491	65	2,285
2007/08	2,049	1,600	11.87	199.11	5,973	503	75	2,768
2008/09	1,957	1,542	12.50	214.01	6,420	514	73	2,400
2009/10	2,334	1,891	13.63	251.08	7,532	552	79	2,790
2010/11	2,161	1,715	12.28	226.16	6,785	552	75	2,626

	Census Headcount	End of Term Headcount	FTEF	FTES	WSCH	Load	Sections	Max Enroll
Fall 2006	717	553	4.73	74.33	2,230	471	31	1,070
Fall 2007	756	575	4.80	79.26	2,378	495	30	1,037
Fall 2008	791	598	5.37	84.28	2,529	471	30	937
Fall 2009	958	781	5.73	94.73	2,842	496	32	1,205
Fall 2010	889	684	5.13	93.65	2,809	547	30	1,055
Spring 2007	671	522	4.58	74.17	2,225	486	27	945
Spring 2008	868	645	5.53	86.25	2,587	468	35	1,208
Spring 2009	897	700	5.43	93.88	2,816	518	34	1,138
Spring 2010	1,029	836	6.10	116.29	3,489	572	37	1,238
Spring 2011	1,022	838	5.85	107.50	3,225	551	37	1,288
Summer 2006	192	165	1.30	25.17	755	581	7	270
Summer 2007	425	380	1.54	33.60	1,008	654	10	523
Summer 2008	269	244	1.70	35.84	1,075	632	9	325
Summer 2009	347	274	1.80	40.05	1,202	668	10	348
Summer 2010	250	193	1.30	25.02	751	577	8	283

Source: SMCCCD Data Warehouse

Census Headcount: Number of duplicated headcount at final census.

End of Term Headcount: Number of duplicated headcount at the end of the term.

FTEF: Total number of full time equivalent faculty assigned.

FTES: Total number of full time equivalent students enrolled at first census.

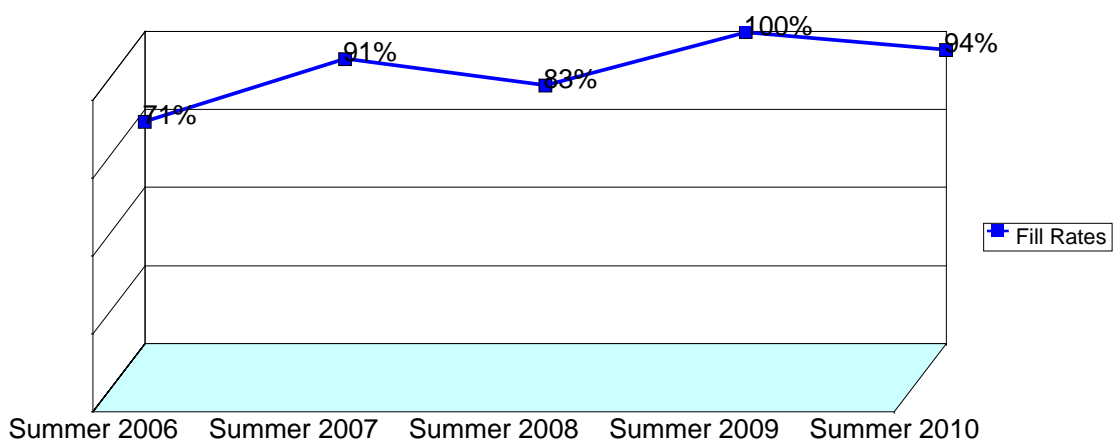
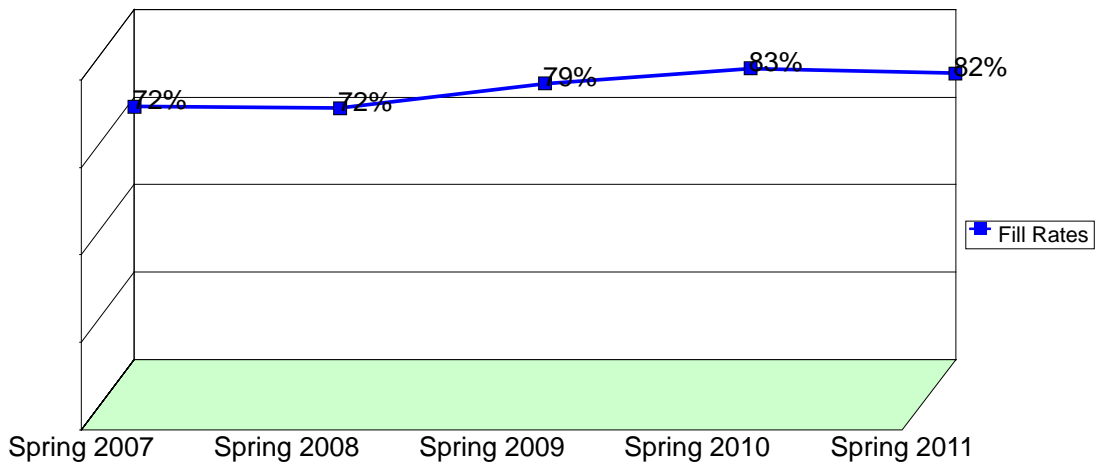
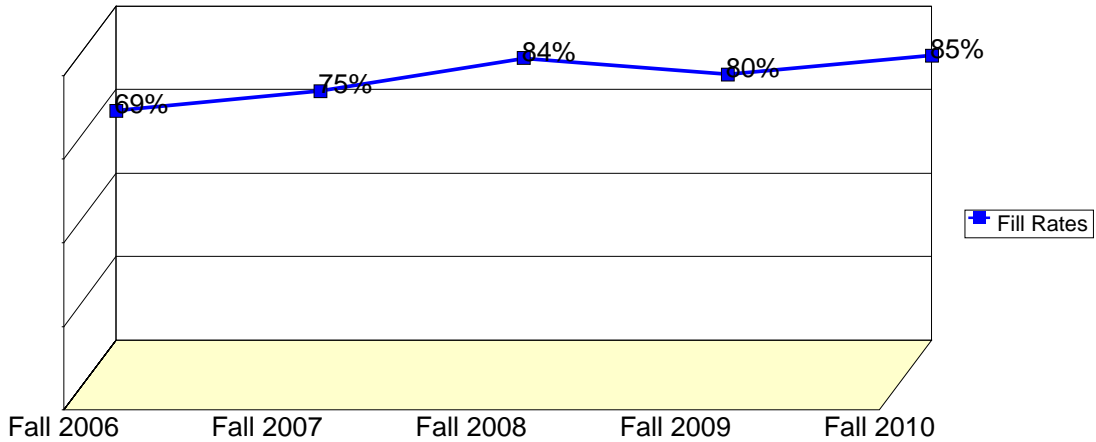
WSCH: Weekly student contact hours generated by census enrollments.

Load: The ratio of WSCH to FTEF, used to measure productivity.

Sections: Total number of sections offered per semester.

Max Enroll: The enrollment capacity or maximum enrollment as defined in curriculum.

Department Fill Rates by Term



Source: SMCCCD Data Warehouse

Fill Rates: The percent a class fills/enrolls based on capacity or enrollment maximum defined in the curriculum (does not include positive attendance or open entry/open exit classes).

Department Productivity: Term by Course

				Census	End of					Max			
				Headcount	Term	FTEF	FTES	WSCH	Load	Sections	Enroll		
Fall 2006	BUS.	100	Introduction to Business	66	56	0.40	6.60	198	495	2	80		
		101	Human Relations at Work	20	18	0.20	2.00	60	300	1	40		
		103	Intro. to Bus. Info Systems	75	59	0.40	10.38	311	779	2	80		
			Intro. to Bus.Info Systems	23	18	0.20	2.30	69	345	1	40		
		120	Math Analysis for Business	77	61	0.40	10.66	320	799	2	80		
			Math Analysis for Business	28	19	0.20	3.92	118	588	1	40		
		123	Statistics	91	63	0.60	11.25	338	563	3	120		
		150	Small Business Management	26	16	0.20	2.86	86	429	1	35		
		200	Intro International Business	26	17	0.20	2.60	78	390	1	30		
		201	Business Law	78	56	0.40	8.16	245	612	2	80		
		226	Global Business Negotiation	14	14	0.10	0.70	21	210	1	40		
		230	Intro to Intn'l Marketing	16	16	0.10	0.80	24	240	1	35		
		240	Int'l Transportation/Logistics	12	12	0.10	0.64	19	192	1	35		
		243	Legal Environment of Int'l Bus	20	20	0.10	1.00	30	300	1	40		
		290	Intro to Marketing Strategy	14	10	0.10	0.70	21	211	1	30		
		291	Marketing Tactics	16	10	0.10	0.80	24	241	1	30		
		400	Business English	17	13	0.20	1.70	51	255	1	40		
		443	Law Office Procedures	1	1	0.10	0.25	8	75	1	30		
		485	Medical Terminology	14	12	0.10	1.54	46	462	1	30		
		486	Medical Transcription	11	7	0.17	2.35	70	422	1	30		
		487	Medical Transcriber Internship	0	0	0.00	0.00	0		1	25		
		665	Invest in/Financial Future	30	20	0.07	1.13	34	509	1	30		
			NPMC Leadership 2006	23	23	0.03				1	30		
		670	Business Work Experience	7	6	0.07	0.78	24	352	1	20		
		680	Intro Medical Office MGMT	12	6	0.20	1.21	36	181	1	30		
		Fall 2007	BUS.	100	Introduction to Business	71	52	0.40	7.10	213	533	2	80
				101	Human Relations at Work	28	20	0.20	2.80	84	420	1	40
				103	Intro. to Bus. Info Systems	70	56	0.40	9.64	289	723	2	80
Intro. to Bus.Info Systems	33				29	0.20	3.30	99	495	1	40		
120	Math Analysis for Business			75	60	0.40	10.35	311	776	2	80		
	Math Analysis for Business			40	27	0.20	5.60	168	840	1	40		
123	Statistics			81	55	0.60	10.21	306	510	3	120		
150	Small Business Management			19	15	0.20	2.09	63	314	1	35		
200	Intro International Business			28	18	0.20	2.80	84	420	1	30		
201	Business Law			56	49	0.40	5.86	176	440	2	80		
205	Business Ethics			30	18	0.20	3.00	90	450	1	35		
226	Global Business Negotiation			36	26	0.10	1.70	51	510	1	40		
230	Intro to Intn'l Marketing			28	18	0.10	1.40	42	420	1	35		
240	Int'l Logistics/Transportation			16	13	0.10	0.80	24	241	1	35		
290	Intro to Marketing Strategy			17	16	0.10	0.85	26	256	1	30		
291	Marketing Tactics			20	8	0.10	1.13	34	339	1	30		
400	Business English			27	26	0.20	2.70	81	405	1	32		
401	Business Communications			20	19	0.20	2.20	66	330	1	40		
443	Law Office Procedures			0	0	0.10	0.00	0	0	1	30		
476	Intro to Medical Office Mngmt			16	12	0.20	1.76	53	264	1	30		
485	Medical Terminology			19	15	0.10	2.09	63	627	1	30		
487	Medical Transcriber Internship			2	1	0.00	0.66	20	#INF	1	25		

			Census Headcount	End of Term Headcount	FTEF	FTES	WSCH	Load	Sections	Max Enroll	
		520	No. San Mateo Co. Leadership	22	21	0.10	1.05	31	314	1	30
		670	Business Work Experience	2	1	0.00	0.17	5	#INF	1	20
Fall 2008	BUS.	100	Introduction to Business	97	69	0.60	9.70	291	485	3	115
		101	Human Relations at Work	30	24	0.20	3.00	90	450	1	35
		103	Intro. to Bus. Info Systems	76	62	0.40	10.16	305	762	2	70
			Intro. to Bus.Info Systems	47	39	0.20	4.70	141	705	1	40
		120	Math Analysis for Business	71	61	0.40	10.33	310	775	2	75
			Math Analysis for Business	31	22	0.20	4.34	130	651	1	35
		123	Statistics	83	54	0.60	10.44	313	522	3	90
		150	Small Business Management	26	18	0.20	2.60	78	390	1	30
		200	Intro International Business	29	23	0.20	2.90	87	435	1	30
		201	Business Law	60	45	0.40	6.00	180	450	2	65
		226	Global Business Negotiation	32	22	0.10	1.60	48	480	1	30
		230	Intro to Intn'l Marketing	24	17	0.10	1.15	35	345	1	30
		240	Int'l Logistics/Transportation	18	11	0.10	0.85	26	255	1	30
		249	Intro-Freight Fwd&CustomBroker	29	19	0.20	2.60	78	390	1	25
		261	Customs Admissibility & Value	12	9	0.20	1.10	33	165	1	25
		262	Forwarding & Transportation	25	16	0.20	2.30	69	345	1	25
		400	Business English	16	14	0.20	1.60	48	240	1	32
		401	Business Communications	24	20	0.20	2.40	72	360	1	35
		443	Law Office Procedures	0	0	0.10	0.00	0	0	1	30
		485	Medical Terminology	25	20	0.10	2.75	83	825	1	30
		491	Medical Coding CPT	16	16	0.20	1.76	53	264	1	35
		499	Comp.MedicalBilling&InfoMngmt	14	12	0.20	1.40	42	210	1	35
		670	Business Work Experience	6	5	0.07	0.60	18	270	1	20
Fall 2009	BUS.	100	Introduction to Business	113	95	0.60	11.30	339	565	3	120
		101	Human Relations at Work	44	43	0.20	4.40	132	660	1	40
		103	Intro. to Bus. Info Systems	74	61	0.40	10.12	304	759	2	80
			Intro. to Bus.Info Systems	39	35	0.20	3.90	117	585	1	40
		120	Math Analysis for Business	71	60	0.40	7.73	232	580	2	80
			Math Analysis for Business	34	21	0.20	3.40	102	510	1	40
		123	Statistics	102	82	0.60	10.55	317	528	3	120
		150	Small Business Management	36	29	0.20	3.96	119	594	1	40
		200	Intro International Business	28	20	0.20	2.80	84	420	1	40
		201	Business Law	72	60	0.40	7.73	232	580	2	80
		226	Global Business Negotiation	32	25	0.10	1.60	48	480	1	35
		230	Intro to Intn'l Marketing	30	22	0.10	1.50	45	450	1	35
		246	Doing Business in China	22	22	0.20	2.20	66	330	1	35
		249	Intro-Freight Fwd&CustomBroker	27	16	0.20				1	35
		258	Broker Services & Regulations	30	26	0.20	2.60	78	390	1	60
		261	Customs Admissibility & Value	18	14	0.20	1.40	42	210	1	60
		262	Forwarding & Transportation	23	17	0.20	1.70	51	255	1	35
		400	Business English	24	17	0.20	2.40	72	360	1	40
		401	Business Communications	20	16	0.20	2.20	66	330	1	35
		443	Law Office Procedures	3	1	0.10	0.75	23	225	1	30
		485	Medical Terminology	50	45	0.20	4.90	147	735	2	80
		491	Medical Coding CPT	33	26	0.20	3.85	116	578	1	40
		499	Comp.MedicalBilling&InfoMngmt	28	24	0.20	3.27	98	490	1	40

			Census Headcount	End of Term Headcount	FTEF	FTES	WSCH	Load	Sections	Max Enroll
		670	5	4	0.03	0.47	14	420	1	20
Fall 2010	BUS.	100	120	96	0.60	12.00	360	600	3	120
		101	37	31	0.20	3.70	111	555	1	40
		103	88	76	0.40	10.52	316	789	2	80
		120	76	62	0.40	8.27	248	620	2	80
			24	16	0.20	2.40	72	360	1	40
		123	102	72	0.60	10.70	321	535	3	120
		150	33	17	0.20	3.63	109	545	1	40
		200	33	25	0.20	3.30	99	495	1	40
		201	81	59	0.40	8.46	254	635	2	80
		226	33	29	0.10	1.65	50	495	1	35
		230	29	25	0.10	1.45	44	435	1	35
		249	20	12	0.20	2.00	60	300	1	35
		258	19	14	0.20	1.90	57	285	1	30
		262	9	3	0.10	0.90	27	270	1	35
		268	8	7	0.10	0.80	24	240	1	30
		400	30	25	0.20	3.00	90	450	1	35
		401	25	18	0.20	2.75	83	413	1	35
		443	3	2	0.10	0.50	15	151	1	30
		485	48	43	0.20	2.31	69	347	2	80
		491	37	25	0.20	6.04	181	907	1	35
499	30	25	0.20	7.10	213	1,065	1	35		
		670	4	2	0.03	0.27	8	240	1	20
Spring 2007	BUS.	100	73	59	0.40	7.65	230	574	2	80
		101	24	20	0.20	2.40	72	360	1	40
		103	62	50	0.40	7.33	220	550	2	80
			36	26	0.20	3.60	108	540	1	40
		107	19	14	0.07	0.65	20	293	1	40
		120	105	81	0.60	14.38	431	719	3	120
		123	93	66	0.60	11.13	334	557	3	115
		150	17	15	0.20	1.70	51	255	1	40
		153	19	12	0.20	1.90	57	285	1	35
		181	17	11	0.10	0.78	23	233	1	30
		201	67	56	0.40	6.70	201	503	2	80
		245	11	9	0.10	0.57	17	170	1	30
		279	12	11	0.10	0.62	19	185	1	30
		400	19	13	0.20	2.53	76	380	1	35
		401	20	14	0.20	2.00	60	300	1	35
		443	4	4	0.10	0.84	25	252	1	40
		485	34	29	0.10	3.40	102	1,020	1	60
		486	11	8	0.21	2.93	88	413	1	30
		487	2	1	0.00	0.53	16	#INF	1	20
				670	26	23	0.20	2.53	76	380
Spring 2008	BUS.	100	70	54	0.40	7.00	210	525	2	80
			53	40	0.40	5.30	159	398	2	70
		101	17	14	0.20	1.70	51	255	1	40

		Census Headcount	End of Term Headcount	FTEF	FTES	WSCH	Load	Sections	Max Enroll		
103	Intro Bus. Information Sys.	68	51	0.40	7.90	237	593	2	80		
	Intro. Bus. Information Sys.	40	32	0.20	4.00	120	600	1	40		
107	Dealing with Difficult People	16	14	0.07	0.55	16	247	1	40		
120	Math Analysis For Bus.	110	90	0.60	15.37	461	768	3	120		
123	Statistics	86	49	0.60	10.30	309	515	3	115		
150	Small Business Management	28	19	0.20	2.80	84	420	1	40		
181	Personal Power & Leadership	29	24	0.10	1.33	40	398	1	30		
200	Intro International Business	36	22	0.20	3.60	108	540	1	40		
201	Business Law	72	57	0.40	7.20	216	540	2	80		
210	International Finance	21	14	0.10	1.05	32	315	1	30		
221	Intercultural Bus. Com.	23	14	0.10	1.15	35	345	1	40		
241	Doing Business in Asia	25	18	0.10	1.20	36	360	1	30		
245	Intro to Customs Brokerage	19	17	0.10	0.95	29	285	1	30		
249	Intro-Freight Fwd&CustomBroker	37	32	0.20	3.60	108	540	3	85		
279	Import/Export Management	28	19	0.10	1.44	43	432	1	30		
400	Business English	23	19	0.20	3.07	92	460	1	35		
401	Business Communications	14	6	0.20	1.40	42	210	1	35		
445	Law Office Management	3	2	0.10	0.33	10	99	1	35		
476	Intro to Medical Office Mngmt	16	10	0.20	1.60	48	240	1	35		
485	Medical Terminology	17	14	0.10	1.70	51	510	1	30		
489	Medical Coding ICD-9	12	10	0.20	1.32	40	198	1	35		
670	Business Work Experience	5	4	0.07	0.40	12	180	1	15		
Spring 2009	BUS.	100	Introduction To Business	41	32	0.20	4.10	123	615	1	40
			Introduction to Business	72	53	0.40	7.20	216	540	2	70
		101	Human Relations at Work	25	18	0.20	2.50	75	375	1	40
		103	Intro Bus. Information Sys.	74	63	0.40	8.40	252	630	2	80
			Intro. Bus. Information Sys.	37	30	0.20	3.70	111	555	1	40
		107	Dealing with Difficult People	25	20	0.07	0.86	26	386	1	40
		120	Math Analysis For Bus.	109	84	0.60	15.03	451	752	3	120
		123	Statistics	99	72	0.60	12.40	372	620	3	115
		150	Small Business Management	24	14	0.20	2.40	72	360	1	40
		181	Personal Power & Leadership	22	15	0.10	1.13	34	339	1	30
		200	Intro International Business	20	20	0.20	2.00	60	300	1	40
		201	Business Law	79	60	0.40	7.90	237	593	2	80
		210	International Finance	14	14	0.10	0.70	21	210	1	30
		221	Intercultural Bus. Com.	22	17	0.10	1.10	33	330	1	30
		241	Doing Business in Asia	20	15	0.10	1.00	30	300	1	30
		243	Legal Environment of Int'l Bus	16	16	0.10	0.80	24	240	1	30
		279	Import/Export Management	13	12	0.10	0.65	20	195	1	30
		400	Business English	28	26	0.20	3.73	112	560	1	35
		401	Business Communications	16	15	0.20	1.60	48	240	1	30
		445	Law Office Management	6	5	0.10	0.70	21	210	1	35
		476	Intro to Medical Office Mngmt	41	30	0.20	4.10	123	615	1	35
		485	Medical Terminology	52	38	0.20	5.20	156	780	2	70
		486	Medical Transcription	13	9	0.27	3.47	104	390	1	30
		487	Medical Transcriber Internship	2	0	0.00	0.19	6	#INF	1	20
		489	Medical Coding ICD-9	25	21	0.20	2.75	83	413	1	35
		670	Business Work Experience	2	1	0.00	0.27	8	#INF	1	15

				Census Headcount	End of Term Headcount	FTEF	FTES	WSCH	Load	Sections	Max Enroll
Spring 2010	BUS.	100	Introduction To Business	36	27	0.20	3.60	108	540	1	40
			Introduction to Business	72	62	0.40	7.20	216	540	2	70
		101	Human Relations at Work	38	37	0.20	3.80	114	570	1	40
		103	Intro Bus. Information Sys.	96	81	0.40	11.24	337	843	2	80
		120	Math Analysis For Bus.	124	104	0.60	17.79	534	890	3	120
		123	Statistics	94	67	0.60	12.11	363	606	3	115
		150	Small Business Management	29	20	0.20	2.90	87	435	1	40
		200	Intro International Business	34	29	0.20	3.40	102	510	1	40
		201	Business Law	76	61	0.40	7.90	237	593	2	80
		210	International Finance	29	27	0.10	1.45	44	435	1	30
		221	Intercultural Bus. Com.	19	17	0.10	0.95	29	285	1	30
		241	Doing Business in Asia	27	24	0.10	1.81	54	544	1	30
		243	Legal Environment of Int'l Bus	27	24	0.10	1.81	54	544	1	30
		248	Asian Management Systems	26	22	0.20	3.05	91	457	1	30
		249	Intro-Freight Fwd&CustomBroker	20	20	0.20	2.61	78	391	1	35
		258	Broker Services & Regulations	8	6	0.20	1.09	33	163	1	30
		261	Customs Admissibility & Value	12	7	0.10	1.63	49	490	1	40
		263	Foreign Country Requirements	12	5	0.20	1.62	49	243	1	35
		267	Ocean Forwarder Regulations	7	5	0.10	0.95	29	286	1	35
		279	Import/Export Management	23	18	0.10	1.15	35	345	1	30
		400	Business English	32	26	0.20	4.48	134	672	1	35
		401	Business Communications	20	10	0.20	2.00	60	300	1	30
		445	Law Office Management	3	3	0.10	0.33	10	99	1	35
		476	Intro to Medical Office Mngmt	38	32	0.20	5.83	175	874	1	35
		485	Medical Terminology	60	46	0.20	6.00	180	900	2	80
		486	Medical Transcription	13	10	0.27	3.90	117	439	1	30
		487	Medical Transcriber Internship	6	6	0.00	0.55	16	#INF	1	20
		489	Medical Coding ICD-9	41	35	0.20	4.51	135	677	1	35
		670	Business Work Experience	7	5	0.03	0.63	19	571	1	15
	Spring 2011	BUS.	100	Introduction To Business	44	37	0.20	4.40	132	660	1
			Introduction to Business	39	36	0.20	3.90	117	585	1	40
		101	Human Relations at Work	36	32	0.20	3.60	108	540	1	40
		103	Intro Bus. Information Sys.	85	71	0.40	11.90	357	893	2	80
		120	Math Analysis For Bus.	97	85	0.60	9.70	291	485	3	120
		123	Statistics	109	80	0.60	10.90	327	545	3	110
		150	Small Business Management	27	24	0.20	2.70	81	405	1	40
		200	Intro International Business	30	27	0.20	3.00	90	450	1	35
		201	Business Law	84	65	0.40	8.40	252	630	2	80
		210	International Finance	35	25	0.10	1.75	53	525	1	40
		221	Intercultural Bus. Com.	27	26	0.10	1.35	41	405	1	30
		241	Doing Business in Asia	31	22	0.10	2.08	62	624	1	40
		243	Legal Environment of Int'l Bus	26	21	0.10	1.75	52	524	1	40
		248	Asian Management Systems	27	25	0.20	3.53	106	530	1	40
		249	Intro-Freight Fwd&CustomBroker	15	8	0.20	1.50	45	225	2	50
		261	Customs Admissibility & Value	10	10	0.20	1.00	30	150	1	40
		263	Foreign Country Requirements	11	8	0.20	1.10	33	165	1	30
		267	Ocean Forwarder Regulations	15	7	0.10	1.50	45	450	1	40
		268	Air Forwarder Ops/Workflow	7	5	0.10	0.70	21	210	1	40

			Census Headcount	End of Term Headcount	FTEF	FTES	WSCH	Load	Sections	Max Enroll
		279	24	21	0.10	1.20	36	360	1	30
		400	27	25	0.20	2.70	81	405	1	30
		401	12	8	0.20	1.20	36	180	1	30
		445	5	4	0.10	0.50	15	150	1	35
		476	69	58	0.20	11.27	338	1,691	1	75
		485	78	67	0.20	7.80	234	1,170	2	151
		486	21	16	0.22	2.68	80	371	1	35
		487	5	4	0.00	1.48	44	#INF	1	35
		489	19	16	0.20	3.17	95	475	1	35
		670	7	5	0.03	0.73	22	661	1	15
Summer 2006	BUS.	100	25	25	0.20	2.50	75	375	1	35
		103	26	26	0.20	3.08	92	462	1	40
		120	35	27	0.20	4.76	143	714	1	40
		123	59	52	0.40	10.90	327	818	2	80
		201	34	22	0.20	3.28	99	493	1	40
		241	13	13	0.10	0.65	20	195	1	35
Summer 2007	BUS.	100	32	27	0.20	3.20	96	480	1	35
		103	36	29	0.20	4.43	133	664	1	40
		120	42	34	0.20	5.41	162	811	1	40
		123	68	55	0.40	10.86	326	815	2	80
		201	33	26	0.20	3.34	100	502	1	40
		221	27	22	0.10	2.57	77	771	1	30
		665	176	176	0.00	2.68	80	#INF	1	250
		680	10	10	0.24	1.00	30	125	1	3
		690	1	1	0.00	0.10	3	#INF	1	5
Summer 2008	BUS.	100	34	34	0.20	3.40	102	510	1	35
		103	38	37	0.20	4.78	143	717	1	40
		120	40	35	0.20	5.44	163	816	1	40
		123	60	52	0.40	11.25	338	844	2	80
		201	33	29	0.20	3.34	100	502	1	40
		249	27	24	0.20	4.94	148	741	1	30
		279	17	17	0.10	0.86	26	258	1	30
		680	20	16	0.20	1.83	55	274	1	30
Summer 2009	BUS.	100	36	24	0.20	3.00	90	450	1	35
			27	27	0.20	2.70	81	405	1	35
		103	43	40	0.20	5.92	178	888	1	40
		120	42	30	0.20	5.71	171	857	1	40
		123	88	64	0.40	12.97	389	973	2	80
		201	37	27	0.20	3.75	112	562	1	40
		249	22	21	0.20	2.28	68	342	1	30
		279	26	20	0.10	1.32	40	395	1	30
		485	26	21	0.10	2.40	72	720	1	35
Summer 2010	BUS.	100	35	27	0.20	3.50	105	525	1	35
		103	49	39	0.20	4.90	147	735	1	40
		120	36	30	0.20	4.46	134	669	1	40
		123	41	32	0.20	5.14	154	771	1	40
		201	37	28	0.20	3.45	104	518	1	40
		258	20	16	0.20	2.00	60	300	1	35

		Census Headcount	End of Term Headcount	FTEF	FTES	WSCH	Load	Sections	Max Enroll
485	Medical Terminology	15	11	0.10	1.50	45	450	1	35
665	Int'l Business Development	17	10	0.00	0.07	2	#INF	1	35