

CAOT Department Productivity: By Year and By Term 2006/07 through 2010/11

	Census Headcount	End of Term Headcount	FTEF	FTES	WSCH	Load	Sections	Max Enroll
2006/07	2,051	1,840	8.98	120.72	3,622	403	115	2,993
2007/08	2,401	1,827	8.06	133.76	4,013	498	105	2,930
2008/09	2,891	2,169	9.64	169.54	5,086	528	116	3,371
2009/10	2,839	2,222	8.95	186.54	5,596	625	110	3,345
2010/11	2,682	2,037	9.13	188.88	5,666	621	106	3,218

	Census Headcount	End of Term Headcount	FTEF	FTES	WSCH	Load	Sections	Max Enroll
Fall 2006	857	778	3.94	49.44	1,483	376	51	1,286
Fall 2007	998	751	3.35	54.02	1,621	483	45	1,256
Fall 2008	1,223	881	4.27	73.92	2,217	519	51	1,435
Fall 2009	1,219	935	4.06	71.75	2,153	530	48	1,513
Fall 2010	1,162	898	3.97	76.65	2,299	579	45	1,384
Spring 2007	866	765	3.47	48.43	1,453	419	46	1,221
Spring 2008	1,094	854	3.64	63.44	1,903	523	48	1,298
Spring 2009	1,321	977	4.07	77.11	2,313	568	49	1,421
Spring 2010	1,147	911	3.49	86.77	2,603	746	45	1,298
Spring 2011	1,132	855	3.93	87.81	2,634	671	47	1,415
Summer 2006	328	297	1.56	22.85	685	438	18	486
Summer 2007	309	222	1.07	16.29	489	458	12	376
Summer 2008	347	311	1.30	18.52	555	427	16	515
Summer 2009	473	376	1.40	28.02	840	600	17	534
Summer 2010	388	284	1.23	24.42	733	594	14	419

Source: SMCCCD Data Warehouse

Census Headcount: Number of duplicated headcount at final census.

End of Term Headcount: Number of duplicated headcount at the end of the term.

FTEF: Total number of full time equivalent faculty assigned.

FTES: Total number of full time equivalent students enrolled at first census.

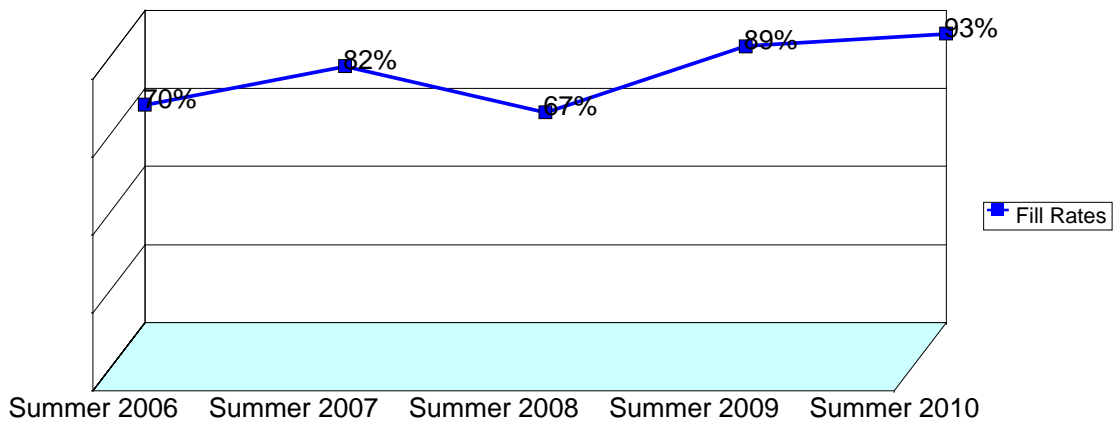
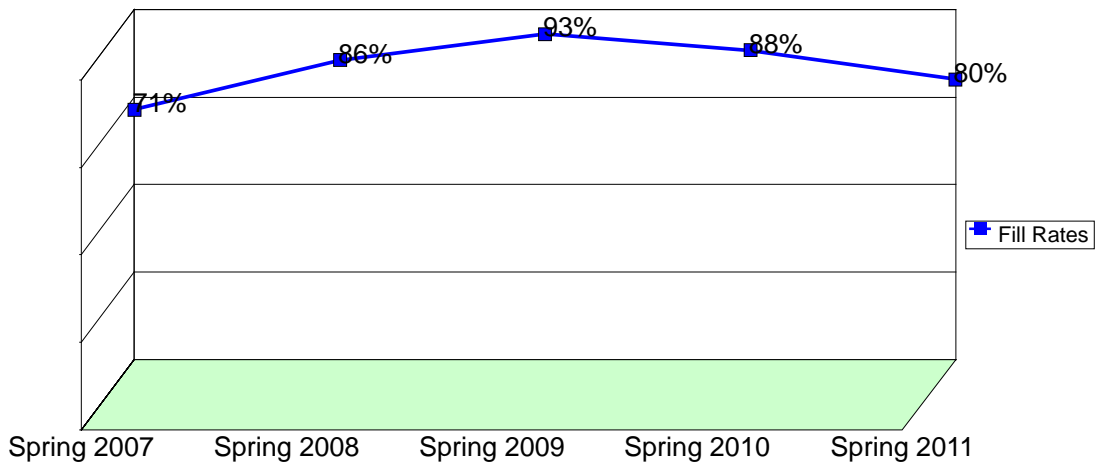
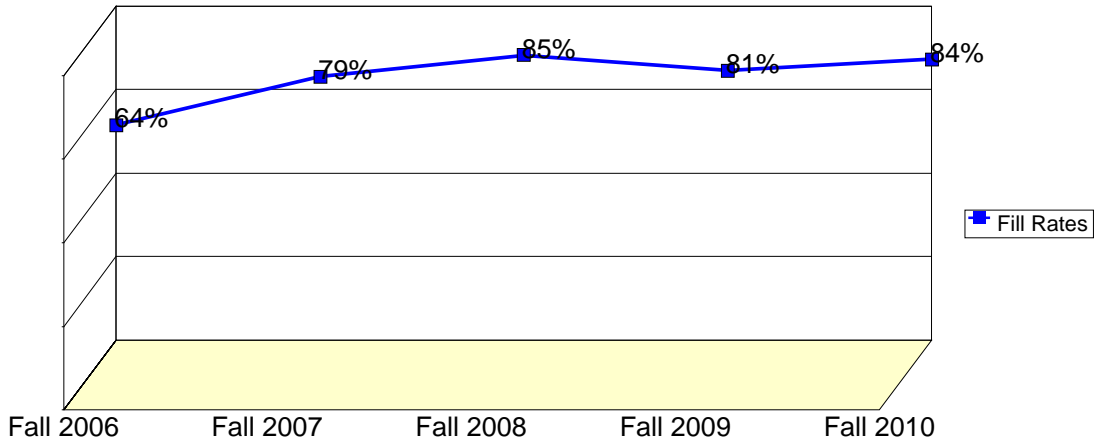
WSCH: Weekly student contact hours generated by census enrollments.

Load: The ratio of WSCH to FTEF, used to measure productivity.

Sections: Total number of sections offered per semester.

Max Enroll: The enrollment capacity or maximum enrollment as defined in curriculum.

Department Fill Rates by Term



Source: SMCCCD Data Warehouse

Fill Rates: The percent a class fills/enrolls based on capacity or enrollment maximum defined in the curriculum (does not include positive attendance or open entry/open exit classes).

Department Productivity: Term by Course

				Census	End of						Max		
				Headcount	Term	FTEF	FTES	WSCH	Load	Sections	Enroll		
Fall 2006	CAOT	100	Beginning Computer Keyboarding	61	59	0.20	2.96	89	445	4	128		
		101	Cmputr Keyboarding Skill Build	36	25	0.20	2.50	75	375	3	88		
		104	Intro to Computers w/Windows I	85	73	0.30	5.37	161	537	3	88		
		105	Intro to Computers Windows II	37	32	0.19	2.41	72	374	2	56		
		200	Intro to MS Office Suite	39	30	0.27	3.83	115	431	2	59		
		201	Integration of MS Office Apps	28	25	0.13	1.62	49	365	2	60		
		214	Word Processing I: Word	33	33	0.07	1.10	33	495	1	35		
		215	Word Processing II: Word	26	26	0.13	1.73	52	390	1	35		
		221	Desktop Publishing:MSPublisher	21	18	0.10	1.70	51	510	1	32		
		222	Bus Presentations I-PowerPoint	24	24	0.07	0.80	24	360	1	30		
		223	Bus. Present. II: PowerPoint	21	21	0.07	0.70	21	315	1	30		
		225	Spreadsheets I: Excel	64	56	0.20	3.62	109	543	3	91		
		226	Spreadsheets II: Excel	53	48	0.40	4.59	138	344	3	91		
		230	Database Applications I Access	21	21	0.07	0.70	21	315	1	40		
		231	Database Application II Access	15	15	0.13	1.00	30	225	1	40		
		301	Maximize Employment Potential	27	27	0.07	0.90	27	405	1	35		
		400	Internet I	23	21	0.10	1.23	37	368	1	24		
		403	HTML & Web Authoring Apps I	37	31	0.20	2.46	74	369	2	56		
		404	HTML & Web Authoring Apps II	28	28	0.20	1.75	52	262	2	56		
		408	Digital Audio and Video	14	13	0.13	1.38	41	310	1	32		
		410	Photoshop Basics	56	54	0.13	2.37	71	533	2	67		
		411	Photoshop for the Web	31	27	0.13	1.29	39	291	2	65		
		412	Flash I	11	11	0.05	0.94	28	566	1	24		
		413	Flash II	8	6	0.05	0.40	12	240	1	24		
		420	JavaScript	2	2	0.05	0.10	3	60	1	32		
		480	Network Fundamentals (LAN)	8	7	0.20	0.86	26	129	2	49		
		665	Introduction to Power Point	30	30	0.03	0.24	7	220	1	0		
					What is Podcasting & Blogging	18	15	0.07	0.88	27	398	1	24
		690	Special Projects	0	0	0.00				4	35		
		Fall 2007	CAOT	100	Beginning Computer Keyboarding	86	58	0.20	4.96	149	745	4	128
101	Cmputr Keyboarding Skill Build			78	53	0.25	5.43	163	651	4	123		
104	Intro to Computers w/Windows I			81	73	0.30	4.99	150	499	3	102		
105	Intro to Computers Windows II			25	19	0.10	1.53	46	445	1	32		
200	Intro to MS Office Suite			44	34	0.27	3.75	113	422	2	70		
201	Integration of MS Office Apps			40	34	0.13	1.47	44	332	2	60		
214	Word Processing I: Word			35	15	0.07	1.03	31	465	1	35		
215	Word Processing II: Word			27	15	0.13	1.73	52	390	1	35		
222	Bus Presentations I-PowerPoint			34	27	0.07	1.10	33	495	1	35		
223	Bus. Present. II: PowerPoint			20	17	0.07	0.57	17	255	1	35		
225	Spreadsheets I: Excel			82	55	0.13	3.79	114	853	2	70		
226	Spreadsheets II: Excel			61	42	0.27	4.86	146	547	2	70		
230	Database Applications I Access			38	22	0.07	1.17	35	525	1	40		
231	Database Application II Access			16	10	0.13	0.93	28	210	1	40		
301	Maximize Employment Potential			31	25	0.07	0.97	29	435	1	35		
400	Internet I			37	33	0.10	1.97	59	592	1	35		
403	HTML & Web Authoring Apps I			56	47	0.20	3.76	113	565	2	70		
404	HTML & Web Authoring Apps II	33	28	0.20	1.99	60	299	2	70				

		Census Headcount	End of Term Headcount	FTEF	FTES	WSCH	Load	Sections	Max Enroll		
	410	Photoshop Basics	56	39	0.13	2.80	84	629	2	70	
	411	Photoshop for the Web	44	37	0.13	1.74	52	392	2	70	
	412	Flash I	19	17	0.05	0.90	27	540	1	35	
	413	Flash II	13	12	0.05	0.65	20	390	1	24	
	480	Network Fundamentals (LAN)	10	9	0.10	1.10	33	330	1	24	
	665	Intro to MAC OperatingSystem X	16	15	0.07	0.40	12	178	1	15	
	665	Fun with MAC OperatingSystem X	16	15	0.07	0.40	12	182	1	15	
	690	Special Projects	0	0	0.00				4	35	
Fall 2008	CAOT	100	Beginning Computer Keyboarding	109	71	0.30	6.85	206	685	4	128
		101	Cmputr Keyboarding Skill Build	61	32	0.30	3.45	104	345	4	123
		104	Intro to Computers w/Windows I	74	63	0.30	4.49	135	449	3	99
		105	Intro to Computers Windows II	39	35	0.17	2.01	60	355	2	64
		200	Intro to MS Office Suite	60	46	0.27	4.82	145	543	2	70
		201	Integration of MS Office Apps	44	36	0.13	1.84	55	413	2	60
		214	Word Processing I: Word	56	37	0.13	3.24	97	728	2	64
		215	Word Processing II: Word	34	25	0.13	2.27	68	510	1	32
		222	Bus Presentations I-PowerPoint	28	18	0.07	0.90	27	405	1	35
		223	Bus. Present. II: PowerPoint	22	18	0.07	0.70	21	315	1	35
		225	Spreadsheets I: Excel	102	76	0.20	5.36	161	803	3	91
		226	Spreadsheets II: Excel	94	55	0.40	7.58	227	569	3	91
		230	Database Applications I Access	59	45	0.13	3.28	98	737	2	67
		231	Database Application II Access	40	33	0.13	2.60	78	585	1	35
		301	Maximize Employment Potential	40	33	0.07	1.33	40	600	1	35
		400	Internet I	29	23	0.10	1.59	48	476	1	32
		403	HTML & Web Authoring Apps I	70	54	0.20	4.42	133	663	2	70
		404	HTML & Web Authoring Apps II	44	36	0.20	4.35	131	653	2	67
		410	Photoshop Essentials	69	44	0.20	4.03	121	604	2	70
		411	Photoshop for the Web	50	31	0.13	1.96	59	440	2	67
		412	Flash I	24	14	0.05	1.00	30	600	1	35
		413	Flash II	12	12	0.05	0.60	18	360	1	35
		416	Adobe InDesign Essentials	16	9	0.20	2.24	67	336	1	35
		480	Network Fundamentals (LAN)	13	10	0.20	1.45	44	218	2	49
		665	ABC's of Adobe Acrobat	22	13	0.07	1.01	30	452	1	24
		665	Adv. Features of Adobe Acrobat	12	12	0.07	0.55	16	247	1	32
		690	Special Projects	0	0	0.00				3	25
Fall 2009	CAOT	100	Beginning Computer Keyboarding	103	78	0.20	6.25	188	938	4	144
		101	Cmputr Keyboarding Skill Build	40	36	0.20	2.60	78	390	4	144
		104	Intro to Computers w/Windows I	75	59	0.20	4.82	145	723	2	72
		105	Intro to Computers Windows II	45	38	0.19	2.12	64	329	2	80
		200	Intro to MS Office Suite	57	42	0.27	5.05	152	569	2	80
		201	Integration of MS Office Apps	53	38	0.13	2.11	63	474	2	80
		214	Word Processing I: Word	60	43	0.13	2.83	85	636	2	72
		215	Word Processing II: Word	61	51	0.27	5.66	170	637	2	80
		222	Bus Presentations I-PowerPoint	33	24	0.07	1.10	33	495	1	40
		223	Bus. Present. II: PowerPoint	29	21	0.07	0.97	29	435	1	40
		225	Spreadsheets I: Excel	109	89	0.20	5.42	162	812	3	120
		226	Spreadsheets II: Excel	102	88	0.40	8.25	247	619	3	120
		230	Database Applications I Access	43	28	0.07	1.43	43	645	1	40

			Census Headcount	End of Term Headcount	FTEF	FTES	WSCH	Load	Sections	Max Enroll	
		231	Database Application II Access	35	26	0.13	2.33	70	525	1	40
		301	Maximize Employment Potential	40	27	0.20	1.33	40	200	1	40
		400	Internet I	29	27	0.10	1.66	50	499	1	40
		403	HTML & Web Authoring Apps I	64	51	0.20	3.98	119	597	2	80
		404	HTML & Web Authoring Apps II	36	23	0.10	1.80	54	540	1	40
		410	Photoshop Essentials	73	51	0.20	4.64	139	697	2	80
		411	Photoshop Portfolio	55	39	0.13	2.17	65	489	2	80
		412	Flash I	14	7	0.05	0.70	21	420	1	35
		413	Flash II	10	6	0.05	0.50	15	300	1	35
		416	Adobe InDesign Essentials	15	8	0.20	1.50	45	225	1	40
		480	Network Fundamentals (LAN)	12	10	0.20	1.34	40	202	2	49
		665	Multimedia Travelogue with MAC S2	25	24	0.10	1.14	34	343	1	20
		690	Special Projects	1	1	0.00	0.03	1	#INF	3	25
Fall 2010	CAOT	100	Beginning Computer Keyboarding	83	71	0.20	5.59	168	838	4	144
		101	Cmputr Keyboarding Skill Build	33	28	0.20	2.63	79	394	4	144
		104	Intro to Computers w/Windows I	68	61	0.20	4.59	138	688	2	70
		105	Intro to Computers Windows II	45	39	0.20	2.20	66	330	2	60
		200	Intro to MS Office Suite	53	47	0.27	4.62	139	520	2	70
			Intro to MS Office Suite - FYE	33	12	0.14	2.20	66	476	1	30
		201	Integration of MS Office Apps	50	40	0.13	2.01	60	453	2	70
		214	Word Processing I: Word	69	59	0.13	4.51	135	1,014	2	75
		215	Word Processing II: Word	71	58	0.27	6.80	204	765	2	75
		222	Bus Presentations I-PowerPoint	38	26	0.07	1.27	38	570	1	40
		223	Bus. Present. II: PowerPoint	37	31	0.07	1.23	37	555	1	40
		225	Spreadsheets I: Excel	79	59	0.13	3.21	96	722	2	75
		226	Spreadsheets II: Excel	81	63	0.27	6.17	185	695	2	75
		230	Database Applications I Access	43	29	0.07	1.43	43	645	1	40
		231	Database Application II Access	18	12	0.13	2.31	69	520	1	40
		301	Maximize Employment Potential	33	26	0.07	1.10	33	495	1	40
		403	HTML & Web Authoring Apps I	60	49	0.20	3.81	114	571	2	75
		404	HTML & Web Authoring Apps II	50	42	0.20	3.11	93	466	2	75
		408	Digital Audio and Video	29	25	0.13	3.30	99	743	1	35
		410	Photoshop Essentials	68	49	0.20	4.16	125	625	2	75
		411	Photoshop Portfolio	54	38	0.20	3.97	119	595	2	75
		412	Flash I	22	11	0.05	1.85	56	1,113	1	35
		413	Flash II	9	4	0.05	0.45	14	270	1	35
		416	Adobe InDesign Essentials	25	12	0.20	2.50	75	375	1	40
		480	Network Fundamentals (LAN)	10	7	0.20	1.52	46	228	2	49
		690	Special Projects	1	0	0.00	0.10	3	#INF	1	5
Spring 2007	CAOT	100	Beginning Computer Keyboarding	80	59	0.21	4.38	131	636	4	126
		101	Cmputr Keyboarding Skill Build	13	11	0.05	1.08	32	606	1	20
			Computer Keyboarding	20	15	0.15	0.72	22	141	2	62
		104	Intro Computers w/Windows	30	22	0.10	1.83	55	549	1	30
			Intro to Computers w/Windows I	37	29	0.10	2.26	68	677	1	30
		105	Intro to Computers w/WindowsII	19	19	0.09	0.87	26	285	1	30
		200	Intro - Microsoft Office Suite	18	18	0.13	1.20	36	270	1	30

			Census Headcount	End of Term Headcount	FTEF	FTES	WSCH	Load	Sections	Max Enroll	
		Intro- Microsoft Office Suite	19	17	0.13	1.99	60	448	1	32	
201		Integration of MS Office Apps	20	20	0.07	0.67	20	300	1	30	
214		Word Processing I: Word	42	38	0.07	1.35	41	609	2	65	
215		Word Processing II: Word	37	33	0.27	3.47	104	391	2	65	
221		Desktop Publishing: MSPublisher	19	19	0.10	0.95	29	285	1	35	
222		Bus Presentations I: PowerPoint	29	29	0.07	0.97	29	435	1	35	
223		Bus. Present II: PowerPoint	17	17	0.07	0.57	17	255	1	30	
225		Spreadsheets I: Excel	18	17	0.07	2.19	66	987	1	30	
		Spreadsheets I: Excel	59	55	0.13	2.70	81	607	2	65	
226		Spreadsheets II: Excel	50	48	0.27	4.17	125	469	2	65	
230		Database Apps I: Access	35	24	0.07	1.17	35	525	1	35	
231		Database Apps II: Access	18	18	0.13	1.20	36	270	1	35	
301		Maximize Employment Potential	25	25	0.07	0.83	25	375	1	30	
400		Internet I	23	16	0.10	1.31	39	394	1	30	
403		HTML & Web Authoring Apps. I	20	19	0.10	1.33	40	400	1	30	
		HTML Apps & Web Authoring I	21	21	0.10	1.05	32	315	1	30	
404		HTML & Web Authoring Apps II	33	32	0.20	2.11	63	317	2	60	
408		Digital Audio and Video	14	11	0.13	1.60	48	360	1	30	
410		Photoshop Basics	57	48	0.13	2.48	74	558	2	65	
411		Photoshop for the Web	41	36	0.13	1.61	48	363	2	65	
412		Flash I	10	10	0.05	0.50	15	300	1	30	
413		Flash II	8	8	0.05	0.40	12	240	1	30	
480		Network Fundamentals (LAN)	8	5	0.10	1.15	34	344	1	30	
665		Create & Use Excel Spreadsheet	25	25	0.03	0.29	9	257	1	30	
690		Special Proj: Office Ad.	0	0	0.00				2	10	
		Special Projects	1	1	0.00	0.03	1	#INF	2	10	
Spring 2008	CAOT	100	Beginning Computer Keyboarding	84	60	0.21	5.16	155	750	4	126
		101	Cmputr Keyboarding Skill Build	16	16	0.05	1.22	37	686	1	32
			Computer Keyboarding	37	24	0.15	2.27	68	445	2	62
		104	Intro Computers w/Windows	43	34	0.10	2.95	88	885	1	35
			Intro to Computers w/Windows I	39	37	0.10	3.57	107	1,070	1	35
		105	Intro to Computers w/WindowsII	45	34	0.16	2.06	62	391	2	60
		200	Intro - Microsoft Office Suite	27	20	0.13	1.80	54	405	1	30
			Intro- Microsoft Office Suite	32	28	0.13	3.35	101	754	1	32
		201	Integration of MS Office Apps	18	18	0.07	0.60	18	270	1	30
		214	Word Processing I: Word	70	52	0.13	3.40	102	764	2	65
		215	Word Processing II: Word	59	46	0.27	5.36	161	603	2	65
		222	Bus Presentations I: PowerPoint	30	20	0.07	0.93	28	420	1	35
		223	Bus. Present II: PowerPoint	19	16	0.07	0.53	16	240	1	30
		225	Spreadsheets I: Excel	32	26	0.07	1.07	32	480	1	30
			Spreadsheets I: Excel	84	68	0.13	4.31	129	969	2	70
		226	Spreadsheets II: Excel	76	59	0.20	6.19	186	929	2	70
		230	Database Apps I: Access	34	22	0.07	0.90	27	405	1	35
		231	Database Apps II: Access	12	12	0.13	0.80	24	180	1	35
		301	Maximize Employment Potential	32	24	0.00	1.03	31	#INF	1	30
		400	Internet I	23	18	0.10	1.38	41	414	1	30
		403	HTML & Web Authoring Apps. I	24	20	0.10	1.87	56	560	1	30
			HTML Apps & Web Authoring I	27	20	0.10	1.35	41	405	1	30

		Census	End of	FTEF	FTES	WSCH	Load	Sections	Max	
		Headcount	Term						Enroll	
404	HTML & Web Authoring Apps II	32	28	0.10	1.40	42	420	1	30	
408	Digital Audio and Video	14	14	0.13	2.01	60	452	1	30	
410	Photoshop Basics	58	45	0.13	2.39	72	538	2	65	
411	Photoshop for the Web	38	24	0.13	1.09	33	244	2	65	
412	Flash I	18	10	0.10	0.70	21	210	1	30	
413	Flash II	11	7	0.10	0.50	15	150	1	30	
480	Network Fundamentals (LAN)	6	3	0.10	0.86	26	258	1	30	
665	Intro to MAC OperatingSystem X	12	12	0.07	0.62	19	278	1	25	
665	Fun with MAC OperatingSystem X	11	10	0.10	0.57	17	170	1	15	
665	Intro to Adobe InDesign CS3	18	14	0.07	0.82	25	370	1	35	
665	Basic Computer Skills	13	13	0.07	0.40	12	178	1	35	
690	Special Proj: Office Ad.	0	0	0.00				2	10	
	Special Projects	0	0	0.00				2	10	
Spring 2009	CAOT 100	Beginning Computer Keyboarding	108	72	0.21	6.53	196	948	4	126
	101	Cmputr Keyboarding Skill Build	51	37	0.10	2.80	84	813	2	62
		Computer Keyboarding	18	10	0.10	1.53	46	444	2	62
	104	Intro Computers w/Windows	61	45	0.20	4.05	121	607	2	65
		Intro to Computers w/Windows I	45	43	0.10	3.94	118	1,183	1	35
	105	Intro to Computers w/WindowsII	52	49	0.16	2.31	69	439	2	60
	200	Intro - Microsoft Office Suite	31	20	0.13	2.07	62	465	1	30
		Intro- Microsoft Office Suite	31	21	0.13	3.57	107	804	1	30
	201	Integrating MS Office Apps.	18	14	0.07	0.91	27	409	1	30
		Integration of MS Office Apps	20	14	0.07	0.67	20	300	1	30
	214	Word Processing I: Word	97	60	0.20	4.40	132	660	3	105
	215	Word Processing II: Word	55	48	0.27	5.26	158	592	2	65
	222	Bus Presentations I:PowerPoint	40	27	0.07	0.90	27	405	1	35
	223	Bus. Present II: PowerPoint	14	14	0.07	0.47	14	210	1	35
	225	Spreadsheets I Excel	49	40	0.07	1.57	47	705	1	40
		Spreadsheets I: Excel	31	31	0.07	1.03	31	465	1	40
		Spreadsheets I: Excel	43	32	0.07	2.26	68	1,017	1	35
	226	Spreadsheets II: Excel	105	73	0.40	7.28	219	546	3	115
	230	Database Apps I: Access	39	27	0.07	1.30	39	585	1	35
	231	Database Apps II: Access	31	25	0.13	1.80	54	405	1	35
	301	Maximize Employment Potential	36	24	0.07	1.20	36	540	1	30
	400	Internet I	26	24	0.10	1.78	53	535	1	30
	403	HTML & Web Authoring Apps. I	30	28	0.10	2.63	79	789	1	30
		HTML Apps & Web Authoring I	39	21	0.10	1.90	57	570	1	35
	404	HTML & Web Authoring Apps II	46	43	0.20	3.24	97	486	2	60
	410	Photoshop Essentials	75	46	0.20	3.52	106	528	2	70
	411	Photoshop Portfolio	57	45	0.13	3.40	102	765	2	65
	412	Flash I	31	17	0.10	1.55	47	465	1	35
	413	Flash II	19	12	0.10	0.95	29	285	1	35
	416	Adobe InDesign Essentials	14	7	0.20	1.15	35	173	1	30
	480	Network Fundamentals (LAN)	7	6	0.10	1.00	30	301	1	30
	690	Special Proj: Office Ad.	1	1	0.00	0.10	3	#INF	2	10
		Special Projects	1	1	0.00	0.03	1	#INF	1	5
Spring 2010	CAOT 100	Beginning Computer Keyboarding	89	68	0.20	6.77	203	1,016	4	126
	101	Cmputr Keyboarding Skill Build	40	24	0.10	3.27	98	982	2	62

			Census Headcount	End of Term Headcount	FTEF	FTES	WSCH	Load	Sections	Max Enroll	
301		Maximize Employment Potential	31	27	0.07	1.53	46	688	1	35	
400		Internet I	32	28	0.10	2.63	79	790	1	35	
403		HTML & Web Authoring Apps. I	23	22	0.10	2.12	63	635	1	35	
		HTML Apps & Web Authoring I	28	20	0.10	2.36	71	708	1	32	
404		HTML & Web Authoring Apps II	40	25	0.20	3.19	96	479	2	70	
408		Digital Audio and Video	15	11	0.13	1.00	30	225	1	35	
410		Photoshop Essentials	54	30	0.20	3.93	118	590	2	70	
411		Photoshop Portfolio	38	31	0.20	2.82	85	423	2	70	
412		Flash I	23	15	0.05	1.98	59	1,187	1	35	
413		Flash II	14	11	0.05	1.18	35	708	1	35	
480		Network Fundamentals (LAN)	5	3	0.10	0.78	24	235	1	30	
665		Adobe Illustrator CS4	15	11	0.10	0.82	25	245	1	32	
690		Special Proj: Office Ad.	1	0	0.00	0.03	1	#INF	2	10	
Summer 2006	CAOT	100	Beginning Computer Keyboarding	35	29	0.18	3.26	98	558	2	67
		101	Cmputr Keyboarding Skill Build	12	7	0.06	1.44	43	788	2	67
		104	Intro Computer w/Windows	28	27	0.11	1.94	58	513	1	25
		200	Intro. MS Office Suites	22	16	0.15	2.26	68	463	1	24
		214	Word Processing I: Word	38	36	0.13	1.69	51	380	2	59
		225	Spreadsheets I: Excel	49	49	0.15	2.34	70	478	2	65
		226	Spreadsheets II: Excel	21	20	0.15	2.82	85	552	1	25
		230	Database Apps. I: Access	24	24	0.07	0.80	24	360	1	40
		231	Database Apps. I: Access	12	12	0.13	0.80	24	180	1	35
		403	HTML & Web Authoring Apps I	44	38	0.21	2.89	87	419	2	57
		404	HTML & Web Authoring Apps II	12	12	0.10	0.98	29	293	1	25
		410	Photoshop	20	20	0.07	1.31	39	589	1	32
		665	Multimedia Using Camtasia	11	7	0.07	0.32	10	145	1	32
Summer 2007	CAOT	100	Beginning Computer Keyboarding	23	18	0.05	2.28	68	1,367	1	32
		101	Cmputr Keyboarding Skill Build	8	7	0.05	0.79	24	475	1	32
		104	Intro Computer w/Windows	20	19	0.10	1.30	39	389	1	35
		200	Intro. MS Office Suites	32	20	0.13	2.13	64	480	1	35
		214	Word Processing I: Word	30	16	0.07	0.57	17	255	1	35
		225	Spreadsheets I: Excel	42	30	0.07	1.27	38	570	1	40
		226	Spreadsheets II: Excel	15	13	0.13	1.93	58	434	1	25
		230	Database Apps. I: Access	35	20	0.07	1.03	31	465	1	40
		231	Database Apps. II: Access	20	17	0.13	1.33	40	300	1	35
		410	Photoshop	31	21	0.07	1.03	31	465	1	32
		411	Photoshop for the Web	17	12	0.07	0.57	17	255	1	35
		665	Macromedia Studio MX V. 8	36	29	0.13	2.07	62	465	1	32
Summer 2008	CAOT	100	Beginning Computer Keyboarding	11	10	0.05	0.93	28	558	1	35
		101	Cmputr Keyboarding Skill Build	9	6	0.05	0.76	23	457	1	35
		104	Intro Computer w/Windows	30	26	0.10	1.84	55	552	1	35
			Intro to Computers w/Windows I	23	21	0.10	1.58	47	473	1	32
		200	Intro to MS Office Suite	25	19	0.13	3.26	98	733	1	30
			Intro. MS Office Suites	16	16	0.13	1.07	32	240	1	35
		214	Word Processing I: Word	23	23	0.07	0.77	23	345	1	40
		222	Bus Presentations I-PowerPoint	17	17	0.07	0.57	17	255	1	30
		225	Spreadsheets I: Excel	57	51	0.13	1.87	56	420	2	87
		226	Spreadsheets II: Excel	26	26	0.13	1.73	52	390	1	40

			Census Headcount	End of Term Headcount	FTEF	FTES	WSCH	Load	Sections	Max Enroll	
		230	Database Apps. I: Access	35	35	0.07	1.17	35	525	1	40
		231	Database Apps. II: Access	18	18	0.13	1.20	36	270	1	35
		410	Photoshop	35	21	0.07	1.03	31	465	1	40
		411	Photoshop for the Web	21	21	0.07	0.70	21	315	1	35
		690	Special Projects	1	1	0.00	0.05	2	#INF	1	1
Summer 2009	CAOT	100	Beginning Computer Keyboarding	49	45	0.20	4.64	139	697	2	67
		101	Cmputr Keyboarding Skill Build	10	5	0.00	0.98	29	#INF	2	67
		104	Intro Computer w/Windows	35	26	0.10	2.01	60	602	1	35
			Intro to Computers w/Windows I	29	29	0.10	1.84	55	552	1	32
		200	Intro to MS Office Suite	21	20	0.13	2.88	86	648	1	30
			Intro. MS Office Suites	25	20	0.13	1.67	50	375	1	35
		214	Word Processing I: Word	26	25	0.07	0.87	26	390	1	40
		222	Bus Presentations I-PowerPoint	16	15	0.07	0.53	16	240	1	30
		225	Spreadsheets I: Excel	86	71	0.13	3.93	118	884	2	80
		226	Spreadsheets II: Excel	42	30	0.13	2.80	84	630	1	40
		230	Database Apps. I: Access	35	19	0.07	1.17	35	525	1	40
		403	HTML & Web Authoring Apps I	36	25	0.10	1.75	53	525	1	35
		410	Photoshop Essentials	35	24	0.10	1.60	48	480	1	35
		411	Photoshop Portfolio	28	22	0.07	1.35	41	607	1	35
Summer 2010	CAOT	100	Beginning Computer Keyboarding	52	37	0.10	3.76	113	1,129	2	67
		101	Cmputr Keyboarding Skill Build	21	13	0.10	1.51	45	454	2	67
		104	Intro to Computers w/Windows I	37	33	0.10	2.56	77	767	1	32
		200	Intro to MS Office Suite	25	21	0.13	2.61	78	588	1	30
			Intro. MS Office Suites	34	23	0.13	2.27	68	510	1	35
		214	Word Processing I: Word	37	27	0.07	1.23	37	555	1	40
		222	Bus Presentations I-PowerPoint	29	22	0.07	0.97	29	435	1	30
		225	Spreadsheets I: Excel	66	53	0.13	2.71	81	609	2	80
		403	HTML & Web Authoring Apps I	31	19	0.10	1.55	47	465	1	35
		410	Photoshop Essentials	26	15	0.10	1.30	39	390	1	35
		416	Adobe InDesign Essentials	30	21	0.20	3.94	118	591	1	35