

Chemistry Department Student Characteristics 2006/07 through 2010/11

Unique Headcount by Term

FA06	FA07	FA08	FA09	FA10	SP07	SP08	SP09	SP10	SP11	SU06	SU07	SU08	SU09	SU10
322	329	378	469	483	315	407	472	468	477	157	165	173	181	134

Unique Headcount by Gender

	2006/07		2007/08		2008/09		2009/10		2010/11		Change 09/10-10/11	5 Year Row Total & Average	
Female	383	54%	425	54%	502	56%	540	58%	504	54%	-7%	2,354	56%
Male	289	44%	310	44%	364	42%	394	40%	400	43%	2%	1,757	42%
Unreported	11	2%	20	2%	17	2%	22	2%	23	3%	5%	93	2%
Column Total	683	100%	755	100%	883	100%	956	100%	927	100%	-3%	4,204	100%

Unique Headcount by Ethnicity

	2006/07		2007/08		2008/09		2009/10		2010/11		Change 09/10-10/11	5 Year Row Total & Average	
African American	14	2%	15	2%	16	2%	12	1%	15	2%	25%	72	2%
Asian	222	35%	242	35%	259	31%	293	33%	258	30%	-12%	1,274	32%
Filipino	194	28%	186	23%	260	28%	231	24%	218	22%	-6%	1,089	25%
Hispanic	90	12%	104	13%	111	12%	137	13%	133	13%	-3%	575	13%
White	107	15%	133	18%	140	16%	156	17%	155	17%	-1%	691	17%
Other	17	3%	11	1%	2	0%	1	0%	1	0%	0%	32	1%
Unknown	39	6%	67	8%	95	11%	126	12%	147	17%	17%	474	12%
Column Total	683	100%	758	100%	883	100%	956	100%	927	100%	-3%	4,207	100%

Unique Headcount by Age

	2006/07		2007/08		2008/09		2009/10		2010/11		Change 09/10-10/11	5 Year Row Total & Average	
Under 18	33	5%	29	4%	46	6%	44	5%	12	1%	-73%	164	4%
Age 18-22	369	58%	435	61%	453	56%	513	61%	495	62%	-4%	2,265	60%
Age 23-28	179	26%	183	21%	242	25%	236	21%	253	23%	7%	1,093	23%
Age 29-39	76	10%	92	12%	119	11%	133	10%	141	11%	6%	561	11%
Age 40-49	22	2%	21	2%	28	2%	28	2%	28	2%	0%	127	2%
Age 50-59	6	0%	4	0%	5	0%	6	0%	4	0%	-33%	25	0%
Age 60+							1	0%	1	0%	0%	2	0%
Column Total	685	100%	764	100%	893	100%	961	100%	934	100%	-3%	4,237	100%

Source: SMCCCD Data Warehouse

*Note: Counts and percents are based on census figures.

**Note: The variations in total numbers each year within the demographic segments are due to missing data points, and, in the case of age, also due to students crossing a category threshold during a year (18-22 in Fall, 23-28 in Spring).

Unique Headcount by Status

	2006/07		2007/08		2008/09		2009/10		2010/11		Change 09/10-10/11	5 Year Row Total & Average	
Continuing	521	75%	561	69%	651	71%	730	75%	778	83%	7%	3,241	76%
Currently K-12	31	4%	22	4%	39	5%	37	4%	7	1%	-81%	136	3%
First-Time	26	4%	24	4%	22	3%	27	3%	17	2%	-37%	116	3%
First-Time Transfer	59	8%	79	14%	98	13%	97	11%	82	9%	-15%	415	11%
Returning	38	5%	54	5%	50	4%	42	3%	40	3%	-5%	224	4%
Returning Transfer	34	4%	42	4%	50	3%	52	3%	27	2%	-48%	205	3%
Column Total	709	100%	782	100%	910	100%	985	100%	951	100%	-3%	4,337	100%

Unique Headcount by Course-Taking Pattern (Fall and Spring only)

	2006/07		2007/08		2008/09		2009/10		2010/11		Change 09/10-10/11	5 Year Row Total & Average	
Day	452	70%	552	77%	681	80%	776	84%	743	82%	-4%	3,204	80%
Day and Evening	7	1%	6	1%	1	0%			1	0%		15	0%
Evening	240	29%	213	22%	215	20%	189	16%	200	17%	6%	1,057	20%
Column Total	699	100%	771	100%	897	100%	965	100%	944	100%	-2%	4,276	100%

Unique Headcount by Educational Goal

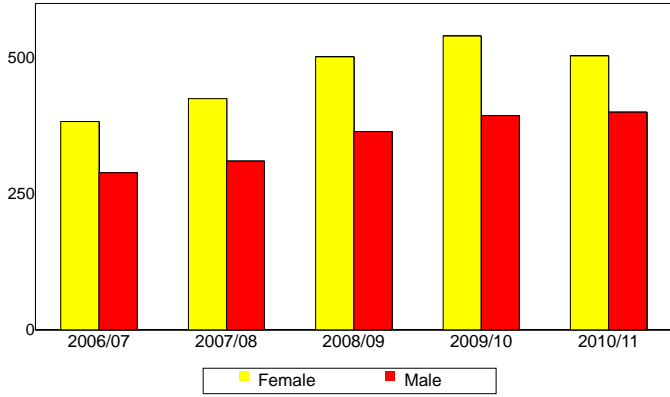
	2006/07		2007/08		2008/09		2009/10		2010/11		Change 09/10-10/11	5 Year Row Total & Average	
Transfer	531	79%	412	53%	467	54%	518	57%	541	61%	4%	2,469	59%
AA/AS w/o Transfer	32	4%	24	3%	31	3%	41	3%	55	5%	34%	183	4%
Certificate w/o Transfer	6	1%	8	1%	10	1%	11	1%	17	2%	55%	52	1%
Acquire/Update Job Skills	29	4%	46	7%	56	5%	60	5%	73	6%	22%	264	6%
Complete HS Credits	10	1%	14	2%	28	4%	27	3%	5	1%	-81%	34	2%
Educational Development	32	4%	21	3%	35	4%	32	3%	40	4%	25%	160	3%
Formulate Career Plans/G	1	0%	2	0%	7	1%	14	1%	8	1%	-43%	32	1%
Improve Basic Skills	1	0%	2	0%	3	1%	4	0%	5	1%	25%	15	0%
Maintain Certificate/Licens	1	0%	1	0%	2	0%	4	0%	4	0%	0%	12	0%
Undecided/Unreported	55	8%	246	31%	249	28%	251	25%	192	20%	-24%	993	23%
Column Total	698	100%	776	100%	888	100%	962	100%	940	100%	-2%	4,264	100%

Source: SMCCCD Data Warehouse

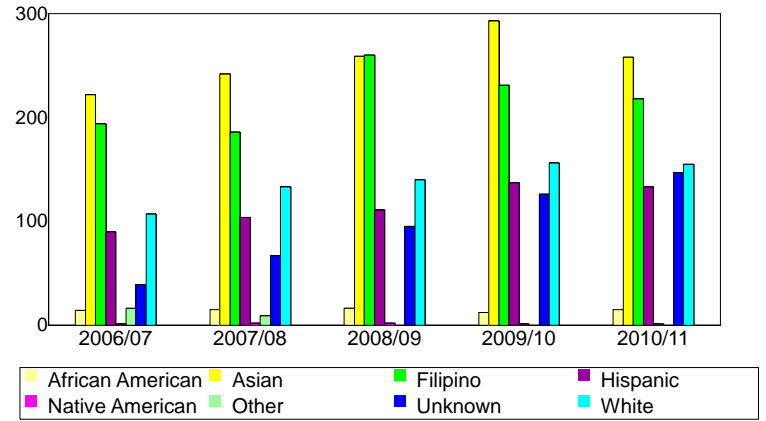
*Note: Counts and percents are based on census figures for summer, fall and spring.

**Note: The variations in total numbers each year within the Status, Course-Taking, and Educational Goal tables are due to missing data points and also due to students changing Status, Pattern, or Educational Goal within a given year - e.g. "First Time Student" in Fall and "Continuing Student" in Spring.

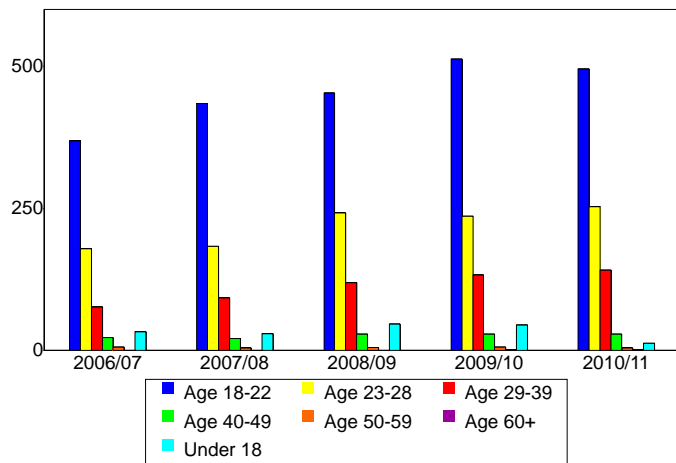
Unique Headcount by Gender



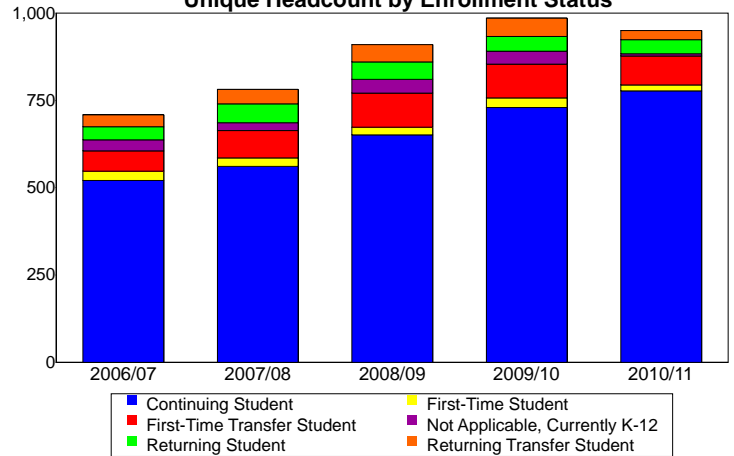
Unique Headcount by Ethnicity



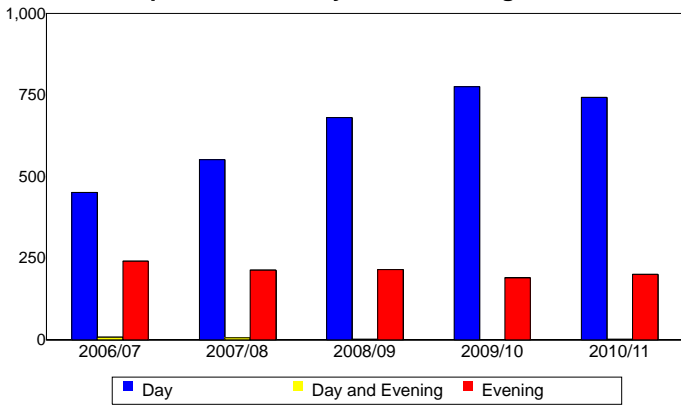
Unique Headcount by Student Age



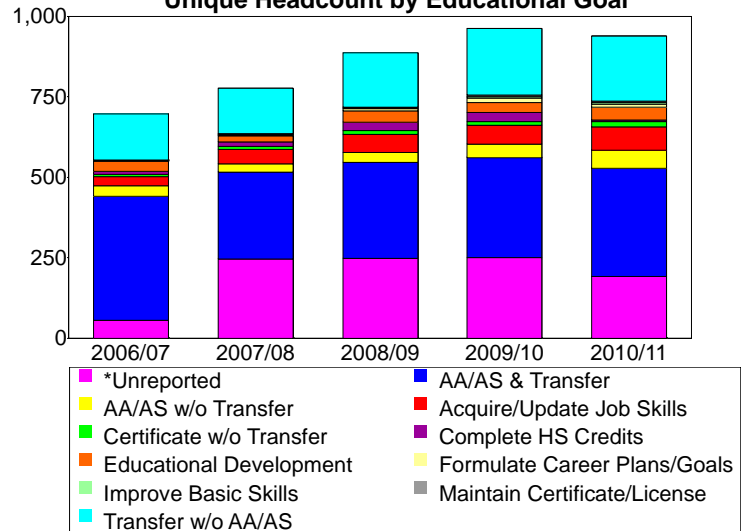
Unique Headcount by Enrollment Status



Unique Headcount by Course-Taking Pattern



Unique Headcount by Educational Goal



Source: SMCCCD Data Warehouse