

Cooperative Education Department Productivity: By Year and By Term 2006/07 through 2010/11

	Census Headcount	End of Term Headcount	FTEF	FTES	WSCH	Load	Sections	Max Enroll
2006/07	825	715	5.80	90.40	2,712	468	23	914
2007/08	897	745	6.40	96.74	2,902	453	27	1,185
2008/09	1,113	952	9.90	121.01	3,630	367	32	1,435
2009/10	880	799	6.93	84.92	2,548	368	31	1,411
2010/11	1,030	920	7.32	108.57	3,257	445	28	1,399

	Census Headcount	End of Term Headcount	FTEF	FTES	WSCH	Load	Sections	Max Enroll
Fall 2006	412	359	2.93	44.53	1,336	455	11	425
Fall 2007	456	380	3.33	48.43	1,453	436	14	601
Fall 2008	568	500	6.17	62.07	1,862	302	16	741
Fall 2009	427	387	3.70	38.05	1,142	309	15	717
Fall 2010	516	468	3.65	54.52	1,636	448	14	762
Spring 2007	413	356	2.87	45.87	1,376	480	12	489
Spring 2008	441	365	3.07	48.30	1,449	473	13	584
Spring 2009	545	452	3.73	58.94	1,768	474	16	694
Spring 2010	453	412	3.23	46.87	1,406	435	16	694
Spring 2011	514	452	3.67	54.05	1,621	442	14	637

Source: SMCCCD Data Warehouse

Census Headcount: Number of duplicated headcount at final census.

End of Term Headcount: Number of duplicated headcount at the end of the term.

FTEF: Total number of full time equivalent faculty assigned.

FTES: Total number of full time equivalent students enrolled at first census.

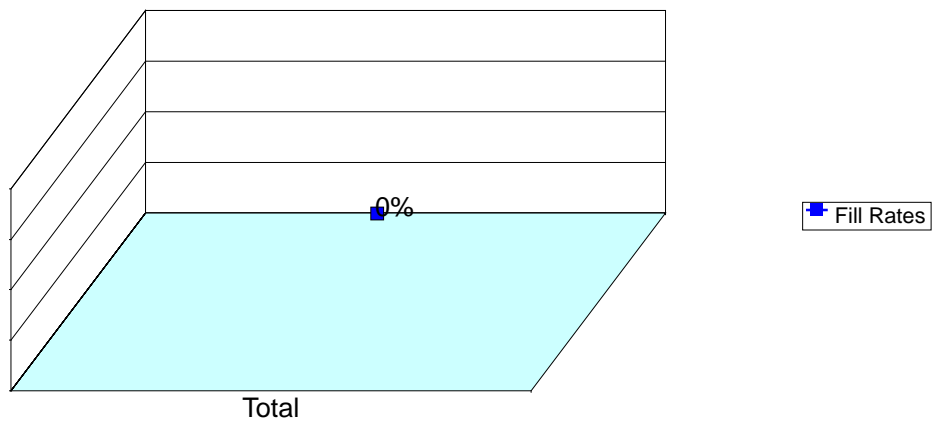
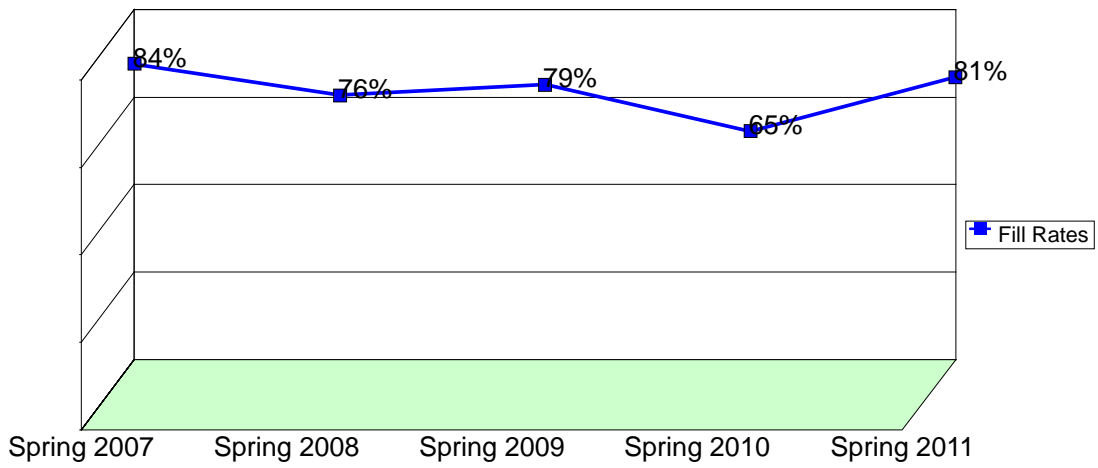
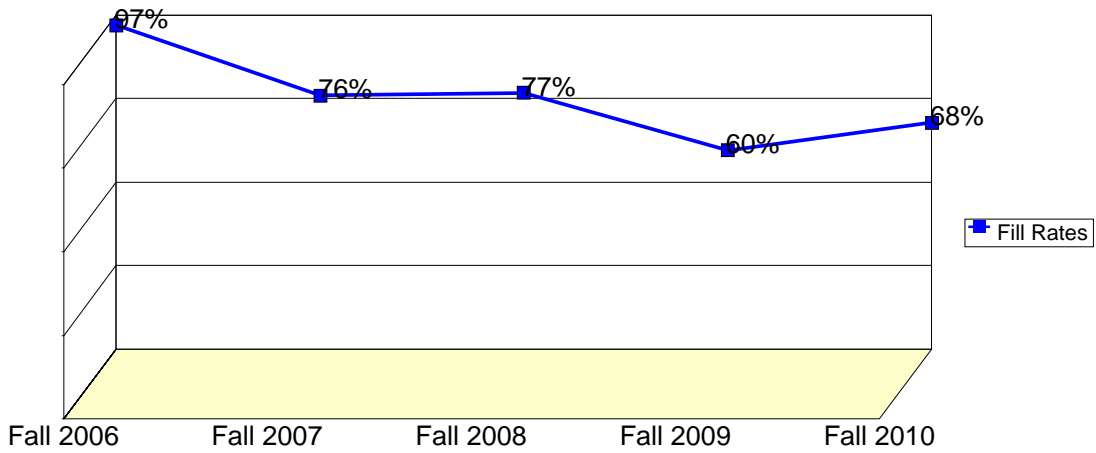
WSCH: Weekly student contact hours generated by census enrollments.

Load: The ratio of WSCH to FTEF, used to measure productivity.

Sections: Total number of sections offered per semester.

Max Enroll: The enrollment capacity or maximum enrollment as defined in curriculum.

Department Fill Rates by Term



Source: SMCCCD Data Warehouse

Fill Rates: The percent a class fills/enrolls based on capacity or enrollment maximum defined in the curriculum (does not include positive attendance or open entry/open exit classes).

Department Productivity: Term by Course

				Census Headcount	End of Term Headcount	FTEF	FTES	WSCH	Load	Sections	Max Enroll
Fall 2006	COOP	670	Vocational Cooperative Ed	391	341	2.80	42.93	1,288	460	9	340
		671	General Cooperative Education	21	18	0.13	1.60	48	360	2	85
Fall 2007	COOP	670	Vocational Cooperative Ed	421	349	3.03	45.63	1,369	451	12	506
		671	General Cooperative Education	35	31	0.30	2.80	84	280	2	95
Fall 2008	COOP	670	Vocational Cooperative Ed	538	474	5.93	59.40	1,782	300	14	646
		671	General Cooperative Education	30	26	0.23	2.67	80	343	2	95
Fall 2009	COOP	670	Vocational Cooperative Ed	395	360	3.39	35.78	1,074	317	13	622
		671	General Cooperative Education	32	27	0.31	2.27	68	221	2	95
Fall 2010	COOP	670	Vocational Cooperative Ed	499	451	3.55	53.18	1,596	449	12	667
		671	General Cooperative Education	17	17	0.10	1.33	40	400	2	95
Spring 2007	COOP	670	Vocational Cooperative Ed	402	347	2.77	44.97	1,349	488	11	449
		671	General Cooperative Education	11	9	0.10	0.90	27	270	1	40
Spring 2008	COOP	670	Vocational Cooperative Ed	407	336	2.83	46.30	1,389	490	11	514
		671	General Cooperative Education	34	29	0.23	2.00	60	258	2	70
Spring 2009	COOP	670	Vocational Cooperative Ed	517	429	3.47	57.27	1,718	496	14	624
		671	General Cooperative Education	28	23	0.27	1.67	50	188	2	70
Spring 2010	COOP	670	Vocational Cooperative Ed	426	389	3.00	45.35	1,361	454	14	624
		671	General Cooperative Education	27	23	0.23	1.52	46	196	2	70
Spring 2011	COOP	670	Vocational Cooperative Ed	490	433	3.53	52.15	1,565	443	12	552
		671	General Cooperative Education	24	19	0.13	1.90	57	427	2	85