

## Counseling Department Productivity: By Year and By Term 2006/07 through 2010/11

	Census Headcount	End of Term Headcount	FTEF	FTES	WSCH	Load	Sections	Max Enroll
2006/07	1,329	1,249	4.94	59.62	1,789	362	55	2,264
2007/08	1,494	1,372	5.82	75.43	2,263	389	59	1,857
2008/09	1,602	1,452	7.50	97.57	2,927	390	68	2,236
2009/10	2,201	2,044	8.17	114.16	3,425	419	93	2,748
2010/11	1,409	1,241	7.20	109.97	3,299	458	54	1,686

	Census Headcount	End of Term Headcount	FTEF	FTES	WSCH	Load	Sections	Max Enroll
Fall 2006	514	471	2.35	31.40	942	400	23	762
Fall 2007	598	549	2.95	40.69	1,221	413	26	882
Fall 2008	820	732	3.67	56.35	1,691	461	30	1,090
Fall 2009	1,276	1,188	4.80	66.31	1,989	415	60	1,739
Fall 2010	708	617	3.67	62.26	1,868	509	23	781
Spring 2007	710	675	2.08	25.13	754	362	25	1,292
Spring 2008	776	707	2.50	30.33	910	364	26	883
Spring 2009	679	620	3.30	37.05	1,112	337	30	1,003
Spring 2010	803	745	2.90	43.44	1,303	449	26	925
Spring 2011	608	532	3.13	42.92	1,287	411	26	811
Summer 2006	105	103	0.50	3.09	93	184	7	210
Summer 2007	120	116	0.37	4.41	132	361	7	92
Summer 2008	103	100	0.53	4.17	125	234	8	143
Summer 2009	122	111	0.47	4.40	132	283	7	84
Summer 2010	93	92	0.40	4.80	144	360	5	94

Source: SMCCCD Data Warehouse

Census Headcount: Number of duplicated headcount at final census.

End of Term Headcount: Number of duplicated headcount at the end of the term.

FTEF: Total number of full time equivalent faculty assigned.

FTES: Total number of full time equivalent students enrolled at first census.

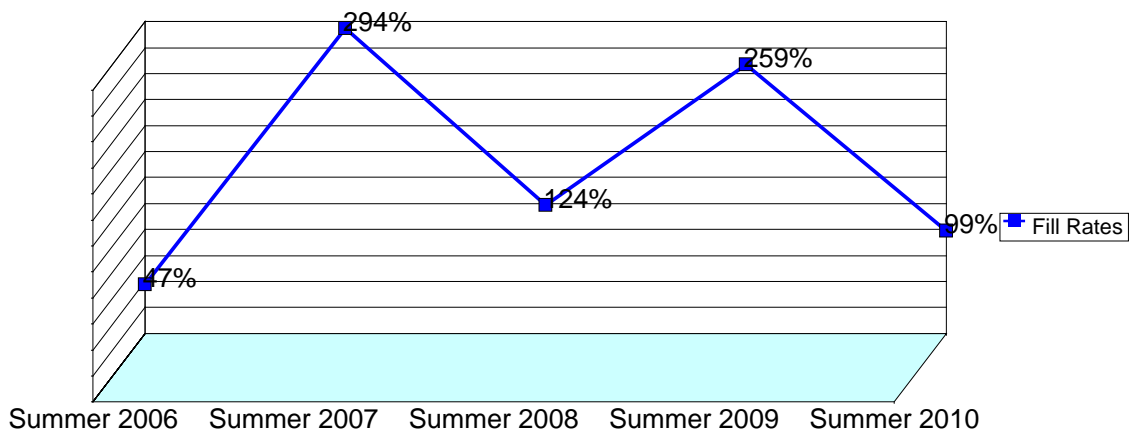
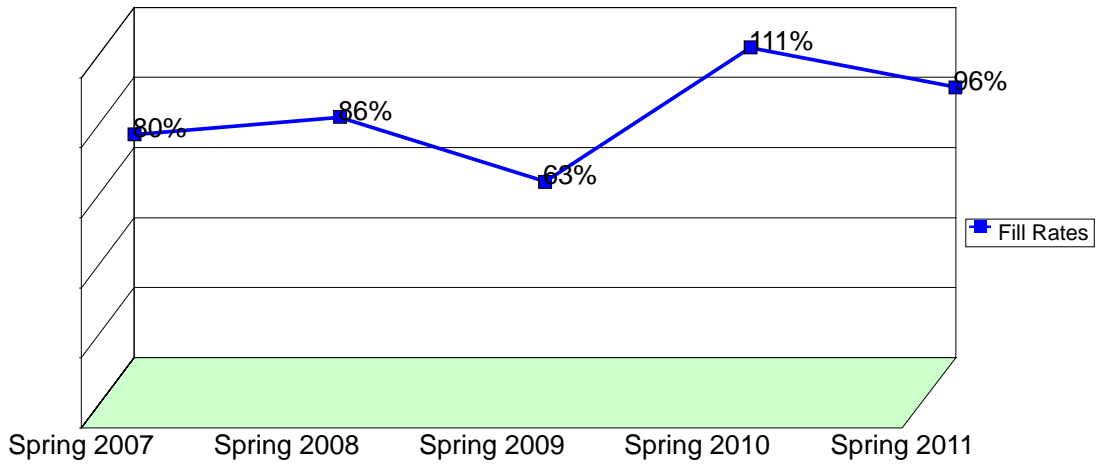
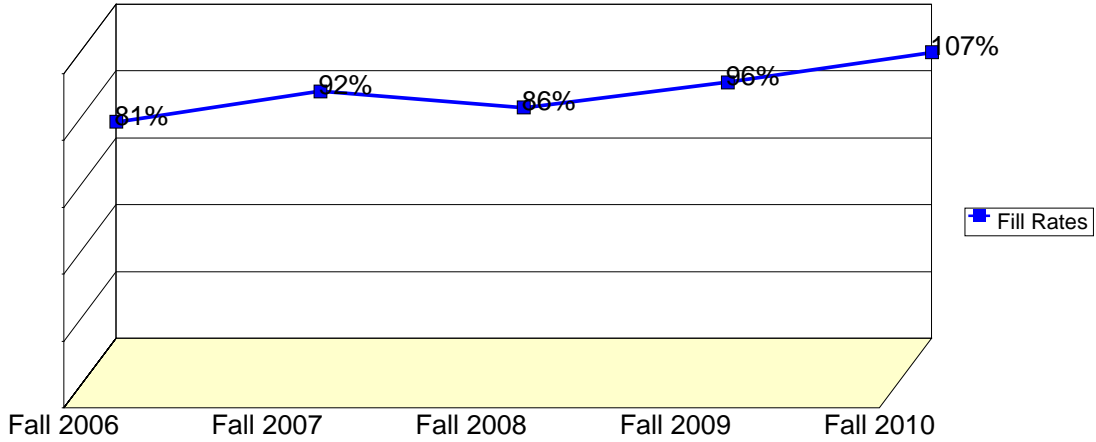
WSCH: Weekly student contact hours generated by census enrollments.

Load: The ratio of WSCH to FTEF, used to measure productivity.

Sections: Total number of sections offered per semester.

Max Enroll: The enrollment capacity or maximum enrollment as defined in curriculum.

## Department Fill Rates by Term



Source: SMCCCD Data Warehouse

Fill Rates: The percent a class fills/enrolls based on capacity or enrollment maximum defined in the curriculum (does not include positive attendance or open entry/open exit classes).

## Department Productivity: Term by Course

			Census	End of	FTEF	FTES	WSCH	Load	Sections	Max	
			Headcount	Term						Enroll	
<b>Fall 2006</b>	COUN 100	College Success	59	52	0.40	5.90	177	443	2	54	
		College Success - Learning Dis	25	23	0.20	2.50	75	375	1	25	
		College Success - Puente	25	20	0.13	2.50	75	563	1	25	
	CRER	100	How to Succeed in College	20	20	0.07	0.61	18	274	1	30
		136	Career Planning	25	19	0.07	0.46	14	206	1	25
		137	Life and Career Planning	92	78	0.60	9.20	276	460	3	90
			Life and Career Planning WIT	20	16	0.22	2.20	66	300	1	25
		650	ASTEP Seminar	23	20	0.13	1.53	46	345	1	25
			Athletes Seminar	53	51	0.13	3.53	106	795	1	75
			Hermanos Seminar	14	14	0.13	0.85	26	192	1	30
			MESA Seminar	3	3	0.00	0.10	3	#INF	1	120
		665	Anger Management	24	24	0.03	0.37	11	329	1	25
			Anxiety Management	19	19	0.03	0.29	9	261	1	30
			Careers in Teaching	24	24	0.03	0.23	7	206	1	25
			Coping With Depression	15	15	0.03	0.23	7	206	1	28
			Deciding On A Major	12	12	0.03	0.18	5	165	1	25
			Transfer Power	42	42	0.07	0.43	13	192	2	50
			Up Your Self-Esteem	19	19	0.03	0.29	9	263	1	25
		690	Walt Disney World College Inte	0	0	0.00				1	30
		<b>Fall 2007</b>	COUN 100	College Success	84	64	0.60	8.40	252	420	3
College Success - ASTEP	43			41	0.20	4.30	129	645	1	30	
College Success - DSPS	26			26	0.20	2.60	78	390	1	30	
College Success - Puente	37			37	0.20	3.70	111	555	1	26	
104	Transfer Power		20	20	0.07	0.16	5	74	2	60	
105	Up Your Self-Esteem		16	16	0.03	0.24	7	220	1	30	
106	Anxiety Management		14	14	0.03	0.20	6	178	1	30	
107	Coping with Depression		13	13	0.03	0.20	6	178	1	30	
108	Anger Management		27	27	0.07	0.41	12	185	2	60	
CRER	100		How to Succeed in College	15	13	0.07	0.46	14	206	1	30
	136		Career Planning	26	18	0.07	0.79	24	356	1	30
	137		Life and Career Planning	91	81	0.60	9.10	273	455	3	90
			Life and Career Planning WIT	26	22	0.20	2.86	86	429	1	30
	139		Careers in Teaching	22	22	0.03	0.27	8	247	1	30
	650		Athletes Seminar	43	43	0.13	2.87	86	645	1	75
			Hermanos Seminar	22	22	0.16	1.81	54	350	1	30
			Honors Seminar	20	20	0.03	0.30	9	275	1	30
			MESA Seminar	14	11	0.07	0.34	10	151	1	120
			Seminar Group - Gateway	21	21	0.13	1.40	42	315	1	1
665	Deciding on a Major		18	18	0.03	0.27	8	247	1	30	
<b>Fall 2008</b>	COUN 100	College Success	122	96	0.80	12.17	365	456	4	125	
		College Success - ASTEP	76	69	0.20	7.60	228	1,140	1	30	
		College Success - DSPS	35	32	0.20	3.50	105	525	1	30	
		College Success - Kababayan	32	31	0.20	3.36	101	504	1	30	
		College Success - Puente	35	33	0.20	3.50	105	525	1	40	
	105	Up Your Self-Esteem	13	13	0.03	0.18	5	165	1	30	
	106	Anxiety Management	21	21	0.03	0.30	9	275	1	30	
107	Coping with Depression	17	17	0.03	0.26	8	233	1	30		

			Census Headcount	End of Term Headcount	FTEF	FTES	WSCH	Load	Sections	Max Enroll	
		108	Anger Management	33	33	0.07	0.47	14	214	2	60
CRER		100	How to Succeed in College	38	33	0.13	1.16	35	260	2	70
		136	Career Planning	58	47	0.13	1.88	56	423	2	70
		137	Life and Career Planning	93	83	0.60	9.30	279	465	3	90
			Life and Career Planning WIT	22	22	0.20	2.20	66	330	1	30
		650	Athletes Seminar	58	58	0.13	3.87	116	870	1	75
			Hermanas Seminar	22	18	0.13	1.53	46	343	1	40
			Hermanos Seminar	22	22	0.27	1.48	44	167	2	70
			Honors Seminar	30	25	0.03	0.46	14	412	1	30
			Kababayan Seminar	27	15	0.13	1.67	50	376	1	30
			MESA Seminar	31	30	0.07	0.91	27	411	1	120
		665	Deciding on a Major	24	24	0.03	0.38	11	343	1	30
		665	Harmful Pressure to Succeed	11	10	0.03	0.17	5	151	1	30
<b>Fall 2009</b>	COUN	100	College Success	162	133	1.00	16.48	494	494	5	155
			College Success - ASTEP	51	44	0.20	5.10	153	765	1	30
			College Success - DSPS	33	30	0.20	3.30	99	495	1	30
			College Success - Puente	33	32	0.20	3.30	99	495	1	40
			College Success ASTEP	41	34	0.20	3.63	109	545	1	30
			College Success EOPS	24	18	0.20	2.26	68	339	1	30
			College Success Kababayan	30	25	0.20	2.66	80	399	1	30
		105	Up Your Self-Esteem	18	18	0.03	0.23	7	206	1	30
		106	Anxiety Management	20	20	0.03	0.26	8	233	1	30
		107	Coping with Depression	21	21	0.03	0.18	5	165	1	30
		108	Anger Management	29	29	0.03	0.37	11	329	1	30
CRER		136	Career Planning	27	20	0.07	0.82	25	370	1	30
		137	Life and Career Planning	87	82	0.60	8.70	261	435	3	90
			Life and Career Planning WIT	25	21	0.20	2.50	75	375	1	30
		410	ASTEP College and Career ORI	32	32	0.10	0.46	14	137	3	65
			College and Career Awareness	371	368	0.87	5.58	167	193	26	596
			College and Career ESOL	31	31	0.07	0.47	14	213	2	48
			College and Career Orientation	29	25	0.07	0.41	12	185	2	50
		650	Athletes Seminar	55	53	0.13	4.22	127	949	1	75
			Hermanas Seminar	31	31	0.13	2.08	62	468	1	40
			Hermanos Seminar	23	23	0.13	1.54	46	347	1	40
			Honors Seminar	29	25	0.03	0.44	13	398	1	30
			MESA Seminar	15	14	0.00	0.43	13	#INF	1	120
		665	Deciding on a Major	30	30	0.03	0.46	14	412	1	30
		665	Stress Management	29	29	0.03	0.44	13	398	1	30
<b>Fall 2010</b>	COUN	100	College Success	165	139	1.00	16.90	507	507	5	155
			College Success - ASTEP	49	41	0.20	4.90	147	735	1	30
			College Success - Puente	31	26	0.20	3.10	93	465	1	40
			College Success - TRIO	33	30	0.20	3.30	99	495	1	35
			College Success ASTEP	47	44	0.20	4.70	141	705	1	30
			College Success EOPS	32	26	0.20	3.22	97	483	1	30
			College Success Kababayan	37	34	0.20	3.70	111	555	1	40
CRER		136	Career Planning	26	22	0.07	0.79	24	356	1	30
		137	Life and Career Planning	89	81	0.60	8.90	267	445	3	90
			Life and Career Planning WIT	28	20	0.20	3.08	92	462	1	30

			Census Headcount	End of Term Headcount	FTEF	FTES	WSCH	Load	Sections	Max Enroll
	650	Athletes Seminar	44	41	0.13	3.37	101	759	1	40
		First Year Experience Seminar	31	27	0.13	2.07	62	465	1	45
		Hermanas Seminar	24	22	0.13	1.68	50	379	1	3
		Hermanos Seminar	27	22	0.13	1.89	57	426	1	3
		Honors Seminar	11	9	0.03	0.17	5	151	1	30
		MESA Seminar	5	4	0.00	0.12	4	#INF	1	120
	665	Deciding on a Major	29	29	0.03	0.37	11	329	1	30
Spring 2007	COUN 100	College Success	84	75	0.60	8.40	252	420	3	90
	CRER 136	Career Planning	29	24	0.13	0.94	28	212	2	60
	137	Life And Career Planning	29	22	0.20	2.90	87	435	1	30
		Life and Career Planning	63	55	0.40	6.30	189	473	2	60
		Life and Career Planning-WIT	17	14	0.20	1.70	51	255	1	30
	410	Coll. & Car. Ori - GEPP (DSPPS)	18	18	0.00	0.02	0	#INF	1	140
		College & Career Ori - EYH	12	12	0.00	0.14	4	#INF	1	175
		College and Career Ori - GEPP	266	266	0.00	0.00	0		3	347
		College and Career Orientation	18	18	0.13	1.10	33	247	1	30
	650	ASTEP Seminar	23	21	0.13	1.53	46	345	1	30
		College Seminar	11	11	0.03	0.15	5	137	1	30
		MESA Seminar	11	10	0.07	0.34	10	152	1	90
	665	Deciding on a Major	17	17	0.03	0.26	8	233	1	30
	665	Transfer Power	26	26	0.03	0.20	6	178	1	30
	665	Careers In Teaching	26	26	0.03	0.26	8	233	1	30
	665	Up Your Self-Esteem	19	19	0.03	0.29	9	261	1	30
665	Anxiety Management	15	15	0.02	0.23	7	411	1	40	
665	Coping With Depression	10	10	0.02	0.17	5	301	1	40	
665	Anger Management	16	16	0.02	0.21	6	383	1	40	
Spring 2008	COUN 100	College Success	69	56	0.60	5.78	174	289	3	90
		College Success - ASTEP	50	41	0.20	5.00	150	750	1	30
		College Success-Disabled Stude	18	16	0.20	1.80	54	270	1	30
	104	Transfer Power	19	19	0.03	0.29	9	261	1	30
	105	Up Your Self-Esteem	23	23	0.03	0.35	11	316	1	30
	106	Anxiety Management	15	15	0.03	0.23	7	206	1	30
	107	Coping with Depression	22	22	0.03	0.34	10	302	1	30
	108	Anger Management	23	23	0.03	0.34	10	302	1	30
	CRER 136	Career Planning	37	25	0.13	0.85	26	192	2	60
		Career Planning Biotech	21	21	0.07	0.72	22	324	1	30
	137	Life and Career Planning	92	76	0.60	9.20	276	460	3	90
		Life and Career Planning-WIT	13	11	0.20	1.30	39	195	1	30
	139	Careers in Teaching	32	32	0.03	0.50	15	453	1	30
	410	College & Career Ori - PEP	146	146	0.00	0.00	0		1	28
		College and Career Ori - EYH	8	8	0.00	0.06	2	#INF	1	1
		College and Career Orient. PEP	117	117	0.00	0.00	0		2	79
		College/Career Ori - Hermanos	19	17	0.07	1.46	44	655	1	30
	650	Gateway Seminar	23	11	0.13	1.53	46	345	1	25
		MESA Seminar	11	10	0.07	0.30	9	137	1	150
	665	Deciding on a Major	18	18	0.03	0.27	8	247	1	30

			Census Headcount	End of Term Headcount	FTEF	FTES	WSCH	Load	Sections	Max Enroll	
Spring 2009	COUN 100	College Success	95	87	0.80	9.97	299	374	4	125	
		College Success - ASTEP	36	31	0.20	3.84	115	576	1	30	
		College Success ASTEP	29	23	0.20	2.63	79	394	1	30	
		College Success-Disabled Stude	14	13	0.20	1.40	42	210	1	30	
	105	Up Your Self-Esteem	22	22	0.03	0.26	8	233	1	30	
	106	Anxiety Management	24	24	0.03	0.34	10	302	1	30	
	107	Coping with Depression	23	23	0.03	0.30	9	275	1	30	
	108	Anger Management	24	24	0.03	0.18	5	165	1	30	
	CRER	100	College Success Kababayan	22	22	0.13	0.70	21	158	2	70
			How to Succeed in College	15	14	0.07	0.40	12	180	1	40
		136	Career Planning	28	24	0.13	0.61	18	137	2	60
		137	Life and Career Planning	106	88	0.60	10.60	318	530	3	90
			Life and Career Planning-WIT	16	12	0.20	1.60	48	240	1	30
		410	College & Career Ori - PEP	62	62	0.00	0.06	2	#INF	1	1
College & Carrer Ori- PEP DSPS			46	42	0.00	0.00	0		1	1	
College and Career Ori - EYH			11	11	0.00	0.15	5	#INF	1	1	
College Career Ori - Hermanos			4	4	0.13	0.26	8	58	1	50	
650		College/Career Hermanas	16	13	0.13	0.98	29	219	1	40	
		College/Career Hermanos	12	10	0.13	0.73	22	165	1	40	
		Kababayan	12	12	0.07	0.37	11	166	1	35	
650		MESA Seminar	12	11	0.07	0.39	12	175	1	150	
		Puente Seminar	32	32	0.07	1.04	31	466	1	30	
665	Deciding on a Major	18	16	0.03	0.24	7	220	1	30		
Spring 2010	COUN 100	College Success	84	70	0.60	8.82	264	441	3	90	
		College Success - ASTEP	31	28	0.20	3.10	93	465	1	30	
		College Success - EOPS	33	30	0.20	3.21	96	481	1	35	
		College Success - TRIO	24	20	0.20	2.40	72	360	1	30	
		College Success ASTEP	39	32	0.20	3.74	112	562	1	30	
	105	Up Your Self-Esteem	18	18	0.03	0.27	8	247	1	30	
	106	Anxiety Management	19	19	0.03	0.31	9	281	1	30	
	107	Coping with Depression	23	23	0.03	0.35	11	316	1	30	
	108	Anger Management	28	28	0.03	0.43	13	384	1	30	
	CRER	136	Career Planning	27	21	0.07	0.67	20	302	1	30
		137	Life and Career Planning	96	89	0.60	9.60	288	480	3	90
			Life and Career Planning-WIT	29	20	0.20	2.90	87	435	1	30
		410	College & Career Ori - PEP	196	196	0.00	1.80	54	#INF	3	202
			College & Career Ori- PEP DSPS	34	34	0.00	0.00	0		1	1
College and Career Ori - EYH			14	14	0.00	0.21	6	#INF	1	20	
650		MESA Seminar	6	4	0.07	0.43	13	192	1	150	
		Puente Seminar	31	30	0.13	2.07	62	465	1	27	
		Transition to College-Hermanas	23	23	0.13	1.40	42	316	1	5	
	Transition to College-Hermanos	22	20	0.13	1.34	40	302	1	5		
665	Deciding on a Major	26	26	0.03	0.40	12	357	1	30		
Spring 2011	COUN 100	College Success	60	54	0.40	5.75	173	431	2	60	
		College Success - ASTEP	36	32	0.20	3.60	108	540	1	30	
		College Success - EOPS	24	19	0.20	2.40	72	360	1	35	
		College Success - ESOL	24	22	0.20	2.25	68	338	1	30	
		College Success - TRIO	27	20	0.20	2.70	81	405	1	30	

			Census Headcount	End of Term Headcount	FTEF	FTES	WSCH	Load	Sections	Max Enroll
		College Success-ASTEP	47	40	0.20	5.01	150	752	1	30
	105	Up Your Self-Esteem	24	24	0.03	0.37	11	329	1	30
	106	Anxiety Management	12	12	0.03	0.18	5	165	1	30
	107	Coping with Depression	25	25	0.03	0.38	11	343	1	30
CRER	136	Career Planning	23	17	0.07	0.70	21	315	1	30
	137	Life and Career Planning	61	54	0.40	6.10	183	458	2	60
		Life and Career Planning-FYE	21	18	0.20	2.10	63	315	1	30
		Life and Career Planning-WIT	21	19	0.20	2.10	63	315	1	30
	410	College and Career Ori - EYH	0	0	0.03	0.00	0	0	1	0
	650	CalWorks Seminar	0	0	0.03	0.00	0	0	1	30
		Careers in Auto Seminar	48	45	0.13	1.46	44	329	2	50
		Kababayan Seminar	28	25	0.13	1.87	56	420	1	30
		MESA Seminar	2	1	0.00	0.09	3	#INF	1	150
		Puente Seminar	27	24	0.13	1.80	54	405	1	26
		Transition to College Seminar	35	20	0.00	1.07	32	#INF	1	30
		Transition to College-Hermanas	21	20	0.13	1.40	42	316	1	5
		Transition to College-Hermanos	19	18	0.13	1.22	36	274	1	5
	665	Deciding on a Major	23	23	0.03	0.37	11	329	1	30
<b>Summer 2006</b>	COUN 100	College Success	10	9	0.21	0.93	28	136	1	30
	CRER 100	How to Succeed in College	31	30	0.14	1.15	35	240	2	60
	410	College & Career Awareness	14	14	0.04	0.28	8	192	1	30
		College and Career Awareness	16	16	0.04	0.32	10	220	1	30
	665	Transfer Power	24	24	0.03	0.29	9	261	1	30
		Up Your Self-Esteem	10	10	0.03	0.12	4	110	1	30
<b>Summer 2007</b>	COUN 100	College Success	23	20	0.20	2.16	65	325	1	30
	CRER 100	How to Succeed in College	38	37	0.07	1.41	42	635	2	1
	410	College & Career Awareness	16	16	0.03	0.24	7	220	1	0
		College and Career Awareness	17	17	0.00	0.26	8	#INF	1	1
	665	Transfer Power	8	8	0.03	0.11	3	96	1	30
	665	Up Your Self-Esteem	18	18	0.03	0.23	7	206	1	30
<b>Summer 2008</b>	COUN 100	College Success	23	21	0.20	2.28	68	342	1	30
	105	Up Your Self-Esteem	17	17	0.03	0.24	7	220	1	30
	CRER 100	How to Succ in Coll Jump Start	28	27	0.13	1.11	33	249	2	31
	410	College & Career Awareness	14	14	0.03	0.28	8	250	1	1
		College and Career Awareness	13	13	0.03	0.26	8	232	1	1
	650	College Seminar	8	8	0.03	0.00	0	0	1	30
		Seminar - EOPS College Exp.	0	0	0.07	0.00	0	0	1	20
<b>Summer 2009</b>	COUN 100	College Success	28	28	0.20	2.77	83	416	1	30
	105	Up Your Self-Esteem	28	17	0.03	0.26	8	233	1	30
	CRER 100	Succeed in College Jump Start	30	30	0.13	0.91	27	206	2	2
	410	College & Career Jump Start	15	15	0.03	0.23	7	206	1	1
		College and Career Jump Start	15	15	0.03	0.23	7	206	1	1
	650	College Seminar	6	6	0.03	0.00	0	0	1	20
<b>Summer 2010</b>	COUN 100	College Success	35	34	0.20	3.53	106	529	1	30
	CRER 100	Succeed in College Jump Start	29	29	0.13	0.83	25	186	2	32
	410	College & Career Jump Start	11	11	0.03	0.17	5	151	1	16
		College and Career Jump Start	18	18	0.03	0.27	8	247	1	16