

Counseling Department Student Characteristics 2006/07 through 2010/11

Unique Headcount by Term

FA06	FA07	FA08	FA09	FA10	SP07	SP08	SP09	SP10	SP11	SU06	SU07	SU08	SU09	SU10
453	541	757	1,111	684	368	452	513	613	578	69	84	74	78	64

Unique Headcount by Gender

	2006/07		2007/08		2008/09		2009/10		2010/11		Change 09/10-10/11	5 Year Row Total & Average	
Female	406	47%	484	47%	612	51%	832	49%	519	43%	-38%	2,853	48%
Male	416	51%	498	51%	568	48%	804	49%	664	56%	-17%	2,950	51%
Unreported	10	1%	17	2%	22	2%	30	2%	22	2%	-27%	101	2%
Column Total	832	100%	999	100%	1,202	100%	1,666	100%	1,205	100%	-28%	5,904	100%

Unique Headcount by Ethnicity

	2006/07		2007/08		2008/09		2009/10		2010/11		Change 09/10-10/11	5 Year Row Total & Average	
African American	75	10%	94	10%	128	10%	137	8%	95	7%	-31%	529	9%
Asian	158	20%	187	18%	201	15%	265	16%	199	15%	-25%	1,010	16%
Filipino	111	13%	160	16%	210	18%	287	17%	207	17%	-28%	975	17%
Hispanic	238	28%	259	28%	330	30%	399	26%	336	30%	-16%	1,562	28%
White	173	20%	192	18%	197	15%	290	16%	159	12%	-45%	1,011	15%
Other	25	3%	21	2%	4	0%	6	0%	1	0%	-83%	57	1%
Unknown	52	7%	88	9%	132	11%	282	17%	208	17%	-26%	762	14%
Column Total	832	100%	1,001	100%	1,202	100%	1,666	100%	1,205	100%	-28%	5,906	100%

Unique Headcount by Age

	2006/07		2007/08		2008/09		2009/10		2010/11		Change 09/10-10/11	5 Year Row Total & Average	
Under 18	101	15%	93	12%	210	21%	172	12%	114	11%	-34%	690	14%
Age 18-22	537	66%	649	68%	755	65%	1,115	71%	852	75%	-24%	3,908	70%
Age 23-28	100	11%	124	10%	132	8%	173	8%	144	9%	-17%	673	9%
Age 29-39	50	4%	76	6%	75	4%	128	6%	56	3%	-56%	385	5%
Age 40-49	29	2%	38	2%	32	1%	58	2%	37	2%	-36%	194	2%
Age 50-59	18	1%	21	2%	15	1%	31	1%	12	1%	-61%	97	1%
Age 60+	5	0%	5	0%	1	0%	5	0%	3	0%	-40%	19	0%
Column Total	840	100%	1,006	100%	1,220	100%	1,682	100%	1,218	100%	-28%	5,966	100%

Source: SMCCCD Data Warehouse

*Note: Counts and percents are based on census figures.

**Note: The variations in total numbers each year within the demographic segments are due to missing data points, and, in the case of age, also due to students crossing a category threshold during a year (18-22 in Fall, 23-28 in Spring).

Unique Headcount by Status

	2006/07		2007/08		2008/09		2009/10		2010/11		Change 09/10-10/11	5 Year Row Total & Average	
Continuing	417	47%	572	48%	568	40%	661	34%	633	49%	-4%	2,851	42%
Currently K-12	106	16%	104	15%	223	24%	229	16%	143	15%	-38%	805	17%
First-Time	179	21%	178	22%	281	25%	470	31%	269	22%	-43%	1,377	25%
First-Time Transfer	49	6%	65	8%	56	5%	180	11%	78	6%	-57%	428	8%
Returning	57	6%	68	4%	82	5%	124	6%	81	5%	-35%	412	5%
Returning Transfer	40	3%	47	2%	34	1%	72	2%	52	3%	-28%	245	2%
Column Total	848	100%	1,034	100%	1,244	100%	1,736	100%	1,256	100%	-28%	6,118	100%

Unique Headcount by Course-Taking Pattern (Fall and Spring only)

	2006/07		2007/08		2008/09		2009/10		2010/11		Change 09/10-10/11	5 Year Row Total & Average	
Day	628	76%	777	81%	990	84%	1,163	70%	950	80%	-18%	4,508	77%
Day and Evening	10	1%	15	1%	4	0%	37	2%	9	1%	-76%	75	1%
Evening	211	22%	225	18%	229	15%	541	28%	267	19%	-51%	1,473	21%
Column Total	849	100%	1,017	100%	1,223	100%	1,741	100%	1,226	100%	-30%	6,056	100%

Unique Headcount by Educational Goal

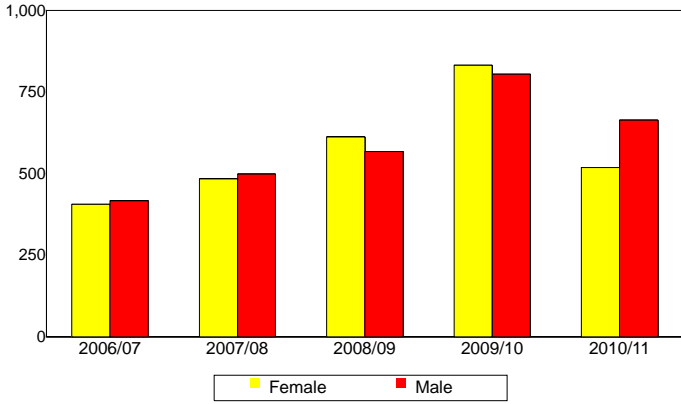
	2006/07		2007/08		2008/09		2009/10		2010/11		Change 09/10-10/11	5 Year Row Total & Average	
Transfer	541	63%	502	47%	607	48%	908	55%	756	63%	-17%	3,314	55%
AA/AS w/o Transfer	55	6%	42	3%	58	5%	100	5%	67	5%	-33%	322	5%
Certificate w/o Transfer	6	1%	26	3%	22	2%	36	2%	21	2%	-42%	111	2%
Acquire/Update Job Skills	41	4%	35	4%	23	2%	64	3%	32	2%	-50%	195	3%
Complete HS Credits	57	8%	70	11%	190	21%	98	6%	30	3%	-69%	445	9%
Educational Development	36	4%	37	4%	42	3%	38	2%	30	2%	-21%	183	3%
Formulate Career Plans/G	3	0%	17	2%	19	2%	23	1%	14	1%	-39%	76	1%
Improve Basic Skills	2	0%	6	0%	8	0%	24	1%	8	0%	-67%	48	1%
Maintain Certificate/Licens	3	0%			4	0%	15	1%	6	0%	-60%	28	0%
Undecided/Unreported	99	13%	276	26%	237	18%	370	23%	245	20%	-34%	1,227	21%
Column Total	843	100%	1,011	100%	1,210	100%	1,676	100%	1,209	100%	-28%	5,949	100%

Source: SMCCCD Data Warehouse

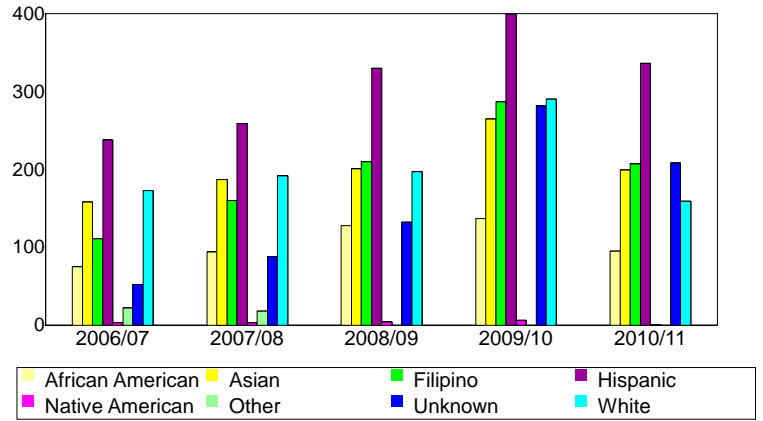
*Note: Counts and percents are based on census figures for summer, fall and spring.

**Note: The variations in total numbers each year within the Status, Course-Taking, and Educational Goal tables are due to missing data points and also due to students changing Status, Pattern, or Educational Goal within a given year - e.g. "First Time Student" in Fall and "Continuing Student" in Spring.

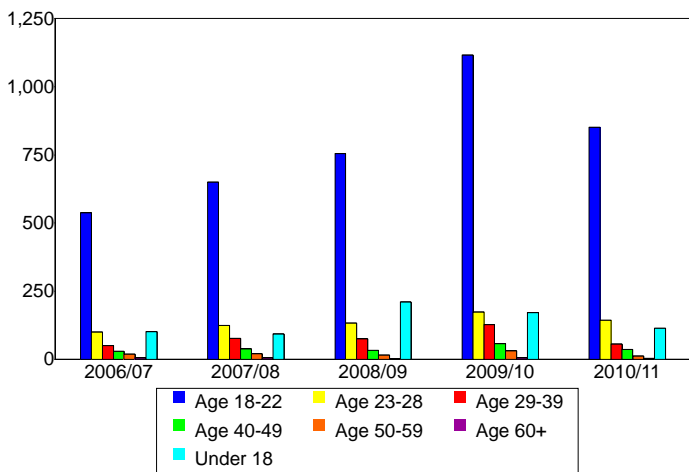
Unique Headcount by Gender



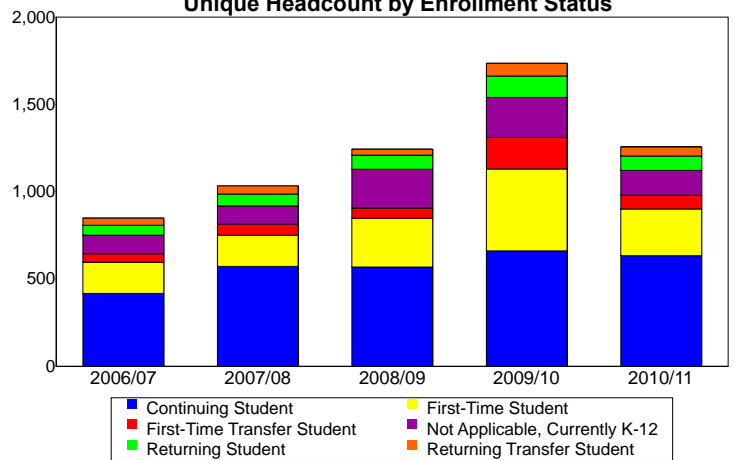
Unique Headcount by Ethnicity



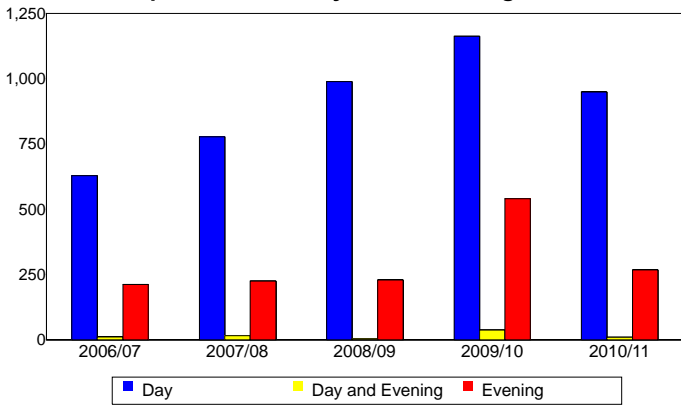
Unique Headcount by Student Age



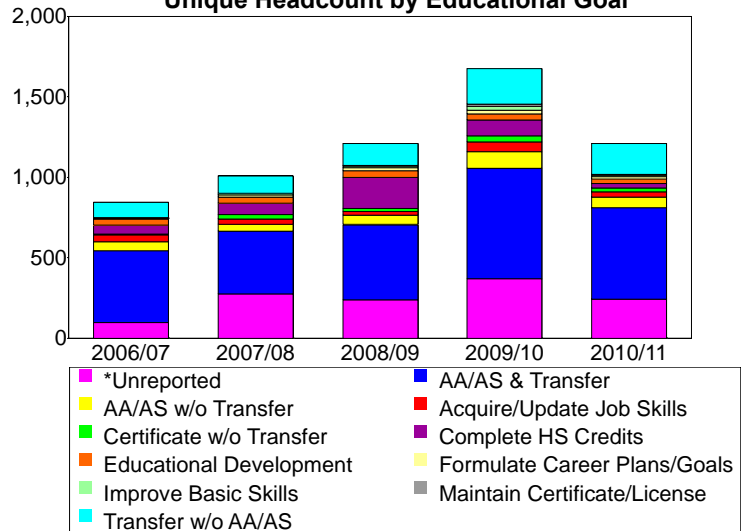
Unique Headcount by Enrollment Status



Unique Headcount by Course-Taking Pattern



Unique Headcount by Educational Goal



Source: SMCCCD Data Warehouse