

DSPS Department Productivity: By Year and By Term 2006/07 through 2010/11

	Census Headcount	End of Term Headcount	FTEF	FTES	WSCH	Load	Sections	Max Enroll
2006/07	569	540	3.58	39.33	1,180	330	45	758
2007/08	349	338	2.01	9.96	299	149	35	476
2008/09	287	258	0.12	7.93	238	1,956	38	391
2009/10	307	266	0.10	9.70	291	2,818	34	386
2010/11	88	77	0.00	4.93	148	#INF	17	126

	Census Headcount	End of Term Headcount	FTEF	FTES	WSCH	Load	Sections	Max Enroll
Fall 2006	250	237	1.70	23.34	700	413	21	311
Fall 2007	152	148	0.64	3.97	119	187	14	210
Fall 2008	161	145	0.02	3.98	119	6,526	19	194
Fall 2009	184	163	0.00	5.33	160	#INF	19	219
Fall 2010	44	42	0.00	2.52	76	#INF	7	58
Spring 2007	195	182	1.32	11.66	350	265	17	267
Spring 2008	108	103	1.04	2.68	80	77	17	161
Spring 2009	114	102	0.00	3.28	98	#INF	18	182
Spring 2010	108	88	0.00	3.50	105	#INF	14	153
Spring 2011	44	35	0.00	2.41	72	#INF	10	68
Summer 2006	124	121	0.56	4.32	130	231	7	180
Summer 2007	89	87	0.33	3.31	99	302	4	105
Summer 2008	12	11	0.10	0.67	20	195	1	15
Summer 2009	15	15	0.10	0.87	26	253	1	14

Source: SMCCCD Data Warehouse

Census Headcount: Number of duplicated headcount at final census.

End of Term Headcount: Number of duplicated headcount at the end of the term.

FTEF: Total number of full time equivalent faculty assigned.

FTES: Total number of full time equivalent students enrolled at first census.

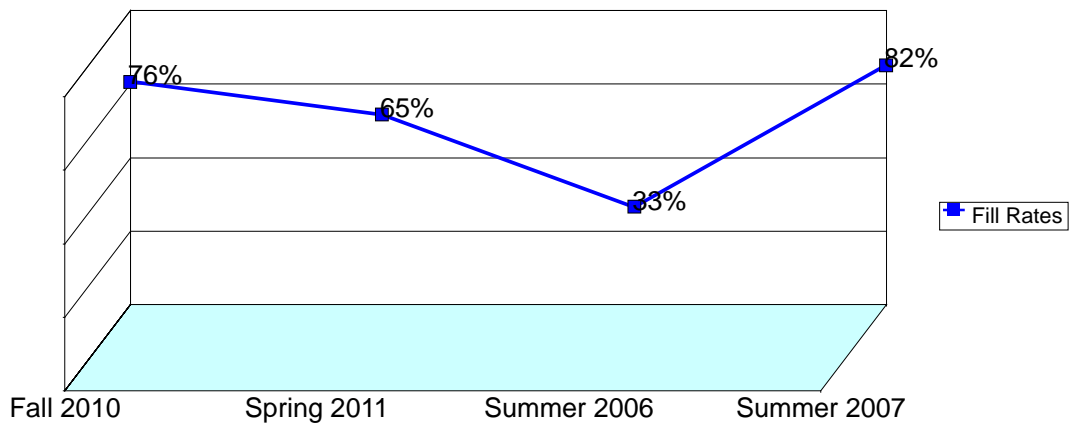
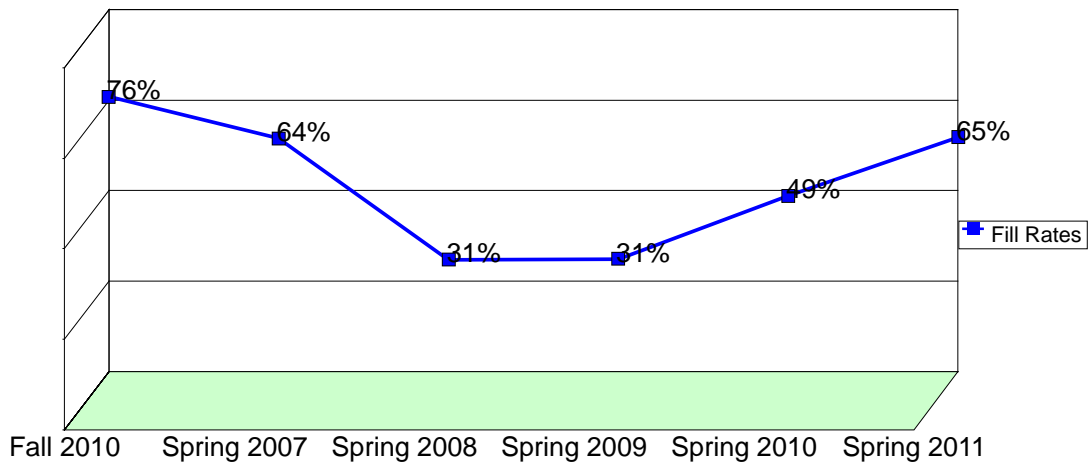
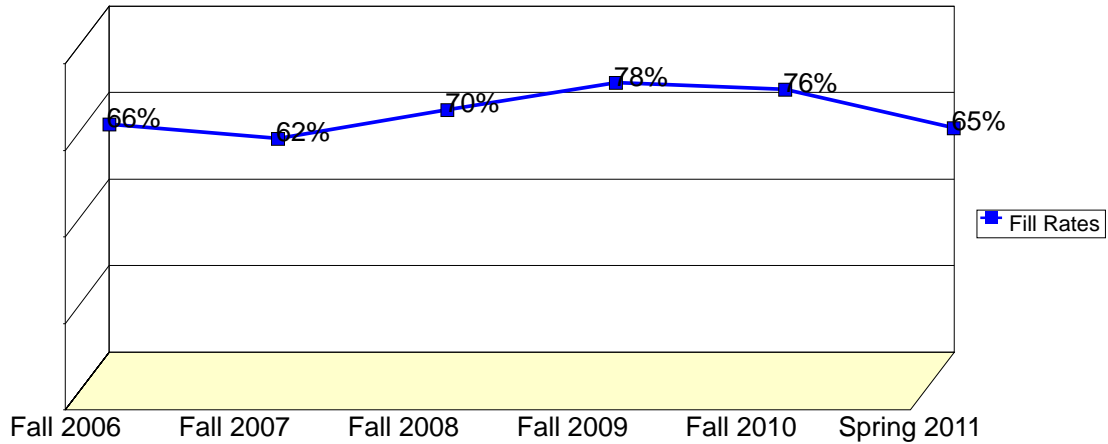
WSCH: Weekly student contact hours generated by census enrollments.

Load: The ratio of WSCH to FTEF, used to measure productivity.

Sections: Total number of sections offered per semester.

Max Enroll: The enrollment capacity or maximum enrollment as defined in curriculum.

Department Fill Rates by Term



Source: SMCCCD Data Warehouse

Fill Rates: The percent a class fills/enrolls based on capacity or enrollment maximum defined in the curriculum (does not include positive attendance or open entry/open exit classes).

Department Productivity: Term by Course

			Census	End of	FTEF	FTES	WSCH	Load	Sections	Max	
			Headcount	Term						Enroll	
Fall 2006	DSKL	811	Differential Learning Skills	50	46	0.27	0.64	19	72	8	41
		880	Assisstive Computer Technology	10	10	0.07	0.52	16	233	1	12
			Assistive Computer Technology	36	29	0.41	1.58	47	115	4	48
		881	Computer-Based Cognitive Re-tr	6	6	0.13	0.60	18	135	1	10
		883	Development of Self-Advocacy S	35	34	0.07	0.53	16	240	2	50
Fall 2006	FITN	349	Functional Adapted Fitn Assess	52	52	0.30	12.25	367	1,225	2	60
		350	Adaptive Physical Education	61	60	0.45	7.23	217	482	3	90
Fall 2007	DSKL	811	Differential Learning Skills	44	42	0.27	0.59	18	66	8	40
		820	Computer-Based Cognitive Retra	8	7	0.13	0.32	10	72	1	10
		821	Develop of Self-Advocacy Skill	55	54	0.10	0.68	21	205	3	90
		880	Assistive Computer Technology	35	35	0.10	2.08	62	603	1	40
		880	Assistive Comp Tech - Advanced	10	10	0.03	0.30	9	275	1	30
Fall 2008	DSKL	811	Differential Learning Skills	39	36	0.00	0.48	15	#INF	8	30
		820	Computer-Based Cognitive Retra	8	8	0.02	0.37	11	600	1	10
		821	Develop of Self-Advocacy Skill	64	60	0.00	0.89	27	#INF	3	90
		825	Assistive Comp Tech - Dragon	10	9	0.00	0.44	13	#INF	3	15
			Assistive Comp Tech - Kurzweil	33	26	0.00	1.44	43	#INF	3	37
			Assistive Comp Tech Kurzweil	7	6	0.00	0.37	11	#INF	1	12
Fall 2009	DSKL	811	Differential Learning Skills	47	44	0.00	0.59	18	#INF	8	36
		821	Develop of Self-Advocacy Skill	72	68	0.00	1.10	33	#INF	3	95
		825	Assistive Comp Tech - Dragon	15	11	0.00	0.91	27	#INF	3	15
			Assistive Comp Tech - Kurzweil	33	26	0.00	2.01	60	#INF	3	36
			Assistive Comp Tech Kurzweil	9	9	0.00	0.55	16	#INF	1	12
		880	UniversalAccess-ElectronicText	8	5	0.00	0.17	5	#INF	1	25
Fall 2010	DSKL	825	Assistive Comp Tech - Dragon	9	7	0.00	0.59	18	#INF	2	10
			Assistive Comp Tech - Kurzweil	13	13	0.00	0.79	24	#INF	2	24
			Assistive Comp Tech Kurzweil	12	12	0.00	0.82	25	#INF	1	12
		880	LearningSkills Assess/Advocacy	10	10	0.00	0.32	10	#INF	2	12
Spring 2007	DSKL	811	Differential Learning Skills	8	8	0.03	0.08	2	70	1	7
			Differential Learning Skills	19	17	0.17	0.24	7	44	5	21
			Differential Learning Skills A	7	6	0.07	0.10	3	44	2	14
		820	Computer-Based Cognitive Re-tr	6	5	0.13	0.30	9	67	1	10
		821	Develop of Self-Advocacy Skill	24	23	0.07	0.37	11	165	2	60
		880	Assisstive Computer Technology	27	25	0.10	1.49	45	434	1	30
		FITN	349	Functional Adapted Fitn Assess	50	48	0.30	3.65	110	365	2
		350	Adaptive Physical Education	54	50	0.45	5.43	163	362	3	75
Spring 2008	DSKL	811	Differential Learning Skills	6	5	0.03	0.07	2	67	1	7
			Differential Learning Skills	30	29	0.20	0.37	11	55	6	28
		820	Computer-Based Cognitive Re-tr	8	8	0.02	0.37	11	600	1	10
		821	Develop of Self-Advocacy Skill	35	34	0.07	0.47	14	213	2	60
		825	Assistive Computer Technology	29	27	0.72	1.39	42	58	7	56
Spring 2009	DSKL	811	Differential Learning Skills	7	6	0.00	0.09	3	#INF	1	6
			Differential Learning Skills	32	30	0.00	0.33	10	#INF	7	30
		821	Develop of Self-Advocacy Skill	28	26	0.00	0.38	11	#INF	3	90
		825	Assistive Computer Technology	47	40	0.00	2.47	74	#INF	7	56
Spring 2010	DSKL	811	Differential Learning Skills	8	8	0.00	0.12	4	#INF	1	5
			Differential Learning Skills	20	19	0.00	0.24	7	#INF	3	15

				Census Headcount	End of Term Headcount	FTEF	FTES	WSCH	Load	Sections	Max Enroll
		821	Develop of Self-Advocacy Skill	22	20	0.00	0.34	10	#INF	2	60
		825	Assistive Computer Tech-Dragon	20	14	0.00	0.80	24	#INF	4	20
			Assistive Computer Tech-Kurz	26	22	0.00	1.60	48	#INF	3	28
		880	UniversalAccess-ElectronicText	12	5	0.00	0.40	12	#INF	1	25
Spring 2011	DSKL	825	Assistive Computer Tech-Dragon	13	11	0.00	0.79	24	#INF	4	21
			Assistive Computer Tech-Kurz	17	12	0.00	1.08	32	#INF	3	28
			Assistive Computer Technology	3	3	0.00	0.18	5	#INF	1	8
		880	LearningSkills Assess/Advocacy	11	9	0.00	0.35	11	#INF	2	11
Summer 2006	DSKL	880	Assistive Computer Technology	10	9	0.11	0.69	21	187	1	30
	FITN	349	Functional Adapted Fitn Assess	39	39	0.15	1.26	38	252	2	50
		350	Adaptive Physical Education	75	73	0.30	2.37	71	237	4	100
Summer 2007	DSKL	880	Assistive Computer Technology	12	11	0.10	0.77	23	223	1	15
	FITN	349	Functional Adapted Fitn Assess	36	36	0.08	0.53	16	210	1	40
		350	Adaptive Physical Education	41	40	0.15	2.01	60	403	2	50
Summer 20	DSKL	825	Assistive Computer Technology	12	11	0.10	0.67	20	195	1	15
Summer 20	DSKL	825	Assistive Computer Technology	15	15	0.10	0.87	26	253	1	14