

## ESOL Department Productivity: By Year and By Term 2006/07 through 2010/11

	Census Headcount	End of Term Headcount	FTEF	FTES	WSCH	Load	Sections	Max Enroll
2006/07	1,039	836	13.67	<b>219.83</b>	6,595	483	40	3,162
2007/08	1,277	1,035	14.80	<b>245.24</b>	7,357	497	48	5,353
2008/09	1,418	1,165	13.20	<b>240.97</b>	7,229	548	44	1,505
2009/10	1,494	1,259	12.47	<b>215.25</b>	6,457	518	42	1,550
2010/11	1,357	1,122	11.13	<b>200.25</b>	6,008	540	38	1,447

	Census Headcount	End of Term Headcount	FTEF	FTES	WSCH	Load	Sections	Max Enroll
Fall 2006	463	357	6.33	<b>106.00</b>	3,180	502	18	566
Fall 2007	636	510	6.87	<b>120.62</b>	3,619	527	23	2,637
Fall 2008	689	574	6.53	<b>128.58</b>	3,857	590	22	761
Fall 2009	681	567	5.67	<b>99.87</b>	2,996	529	19	707
Fall 2010	628	527	4.93	<b>96.77</b>	2,903	588	16	608
Spring 2007	501	425	6.47	<b>102.26</b>	3,068	474	19	2,514
Spring 2008	558	459	7.40	<b>111.11</b>	3,333	450	23	2,656
Spring 2009	631	516	5.60	<b>95.79</b>	2,874	513	18	625
Spring 2010	729	622	5.93	<b>102.91</b>	3,087	520	20	759
Spring 2011	665	549	5.87	<b>98.88</b>	2,966	506	20	754
Summer 2006	75	54	0.87	<b>11.57</b>	347	400	3	82
Summer 2007	83	66	0.53	<b>13.51</b>	405	760	2	60
Summer 2008	98	75	1.07	<b>16.61</b>	498	467	4	119
Summer 2009	84	70	0.87	<b>12.47</b>	374	432	3	84
Summer 2010	64	46	0.33	<b>4.60</b>	138	414	2	85

Source: SMCCCD Data Warehouse

Census Headcount: Number of duplicated headcount at final census.

End of Term Headcount: Number of duplicated headcount at the end of the term.

FTEF: Total number of full time equivalent faculty assigned.

FTES: Total number of full time equivalent students enrolled at first census.

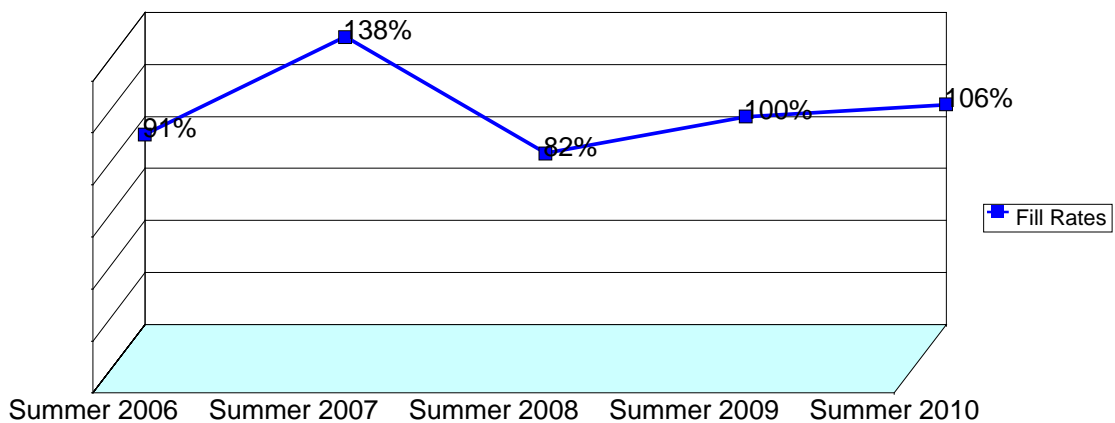
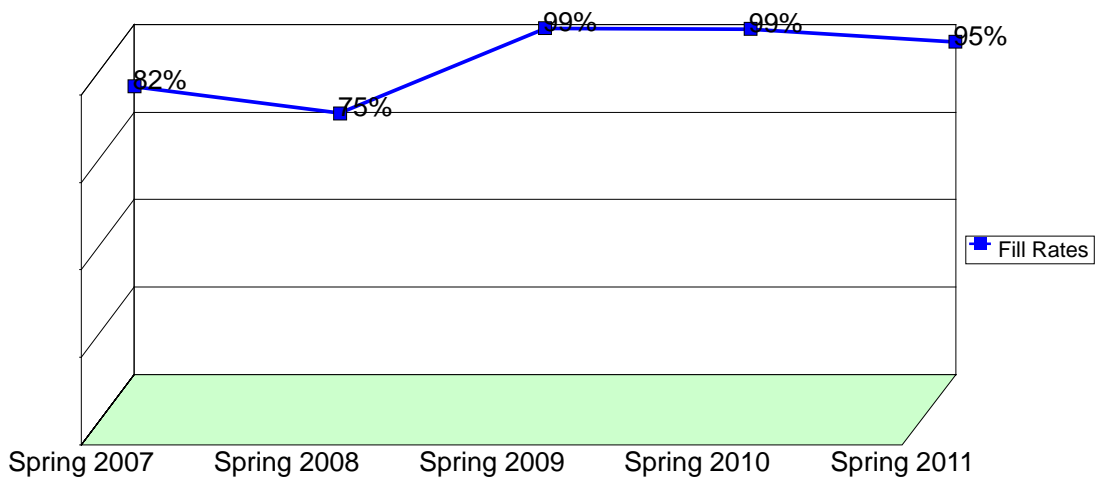
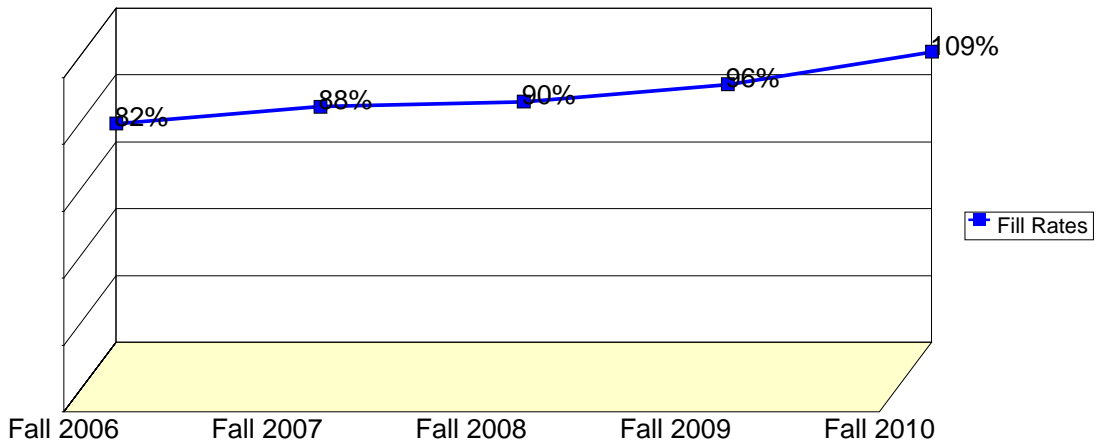
WSCH: Weekly student contact hours generated by census enrollments.

Load: The ratio of WSCH to FTEF, used to measure productivity.

Sections: Total number of sections offered per semester.

Max Enroll: The enrollment capacity or maximum enrollment as defined in curriculum.

## Department Fill Rates by Term



Source: SMCCCD Data Warehouse

Fill Rates: The percent a class fills/enrolls based on capacity or enrollment maximum defined in the curriculum (does not include positive attendance or open entry/open exit classes).

## Department Productivity: Term by Course

			Census	End of	FTEF	FTES	WSCH	Load	Sections	Max	
			Headcount	Term						Enroll	
<b>Fall 2006</b>	ESOL	400	Comp for Nonnative Speakers	109	84	1.33	22.53	676	507	4	104
			English Comp-Nonnative Speaker	27	24	0.67	5.40	162	243	2	80
		811	ENGL Spkrs Other Lang I (1st)	23	21	0.13	3.99	120	897	1	35
		812	ENGL Spkrs Other Lang. I (2nd)	7	5	0.13	1.21	36	273	1	35
		820	ENGL Spkrs Other Languages II	27	24	0.60	9.18	275	459	1	35
		830	ENGL Spkrs Other Languages III	53	36	1.20	18.02	541	451	2	70
		831	ENGL Spkrs Other Lang III (1)	35	31	0.27	6.07	182	682	1	35
		840	ENGL Spkrs Other Languages IV	77	47	1.20	26.18	785	655	2	70
		841	ENGL Spkrs Other Lang IV (1st)	30	21	0.27	5.20	156	585	1	35
		855	Accent Reduction	26	24	0.20	3.64	109	546	1	35
		875	English Grammar for ESOL	15	8	0.20	1.50	45	225	1	35
		880	Basic Conversational English	34	32	0.13	3.09	93	695	1	32
<b>Fall 2007</b>	ESOL	400	Comp for No-Native Speakers	34	25	0.33	7.03	211	632	1	26
			Comp for Non-Native Speakers	107	91	1.00	22.25	667	667	3	78
		655	ESL Supplement	73	66	0.40	5.61	168	420	2	1,998
		800	ESOL - Novice	16	15	0.13	0.98	29	219	1	30
		801	Basic Conversational English	24	18	0.13	1.84	55	414	1	35
		802	Int. Conversational English	34	27	0.13	2.27	68	510	1	35
		820	ENGL Spkrs Other Languages II	29	27	0.60	9.86	296	493	1	35
		821	ENGL Spkrs Other Lang II (1st)	23	18	0.13	3.99	120	897	1	29
		822	ENGL Spkrs Other Lang II (2nd)	2	2	0.13	0.35	10	78	1	29
		830	ENGL Spkrs Other Languages III	29	23	0.60	9.86	296	493	1	35
		831	ENGL Spkrs Other Lang III (1)	18	16	0.27	3.12	94	351	1	35
		840	ENGL Spkrs Other Languages IV	78	53	1.20	26.52	796	663	2	70
		841	ENGL Spkrs Other Lang IV (1st)	42	36	0.60	7.65	229	382	2	61
		851	Hi-Beginning ESL Listen&Speak	27	19	0.20	3.78	113	567	1	35
		861	Hi-Beginning ESL Read & Write	31	24	0.27	5.37	161	604	1	35
		871	High-Beginning ESL Grammar	27	20	0.20	3.78	113	567	1	35
		875	Advanced ESL Grammar & Editing	23	13	0.20	3.22	97	483	1	35
		890	Read & Comp Practice for ESL	19	17	0.33	3.17	95	285	1	30
<b>Fall 2008</b>	ESOL	400	Comp for No-Native Speakers	33	28	0.33	6.82	205	614	1	26
			Comp for Non-Native Speakers	88	74	1.00	18.28	548	548	3	78
			English Comp-Nonnative Speaker	42	38	0.67	8.64	259	389	2	52
		655	ESL Supplement	77	71	0.20	5.10	153	765	1	80
		801	Basic Conversational English	16	13	0.13	1.97	59	444	1	35
		802	Int. Conversational English	18	14	0.13	2.16	65	486	1	35
		830	ENGL Spkrs Other Languages III	35	29	0.60	11.90	357	595	1	35
		840	ENGL Spkrs Other Languages IV	84	69	1.20	28.56	857	714	2	70
		851	Hi-Beginning ESL Listen&Speak	16	13	0.20	2.24	67	336	1	35
		852	Pre-Int. ESL Listen & Speak	41	29	0.20	5.74	172	861	1	35
		861	Hi-Beginning ESL Read & Write	37	32	0.53	6.41	192	361	2	70
		862	Pre-Int. ESL Read & Write	35	29	0.27	6.07	182	682	1	35
		863	Int. ESL Reading & Writing	39	28	0.27	6.76	203	760	1	35
		871	High-Beginning ESL Grammar	30	28	0.20	4.20	126	630	1	35
		872	Pre-Intermediate ESL Grammar	35	31	0.20	4.90	147	735	1	35
		873	Intermediate ESL Grammar	35	23	0.20	4.90	147	735	1	35
	875	Advanced ESL Grammar & Editing	28	25	0.20	3.92	118	588	1	35	

				Census Headcount	End of Term Headcount	FTEF	FTES	WSCH	Load	Sections	Max Enroll
Fall 2009	ESOL	400	Comp for Nonnative Speakers	34	30	0.33	5.67	170	510	1	26
			English Comp-Nonnative Speaker	96	78	1.00	16.10	483	483	3	78
		655	ESL Supplement	115	107	0.20	9.24	277	1,385	1	120
		802	Int. Conversational English	28	26	0.13	1.87	56	420	1	35
		830	ENGL Spkrs Other Languages III	37	31	0.60	11.10	333	555	1	35
		840	ENGL Spkrs Other Languages IV	65	58	1.20	19.50	585	488	2	70
		852	Pre-Int. ESL Listen & Speak	37	30	0.20	3.70	111	555	1	40
		853	Int. ESL Listening & Speaking	26	20	0.20	2.60	78	390	1	35
		861	Hi-Beginning ESL Read & Write	34	34	0.27	4.53	136	510	1	35
		862	Pre-Int. ESL Read & Write	28	25	0.27	3.73	112	420	1	30
		863	Int. ESL Reading & Writing	33	18	0.27	4.40	132	495	1	35
		871	High-Beginning ESL Grammar	30	24	0.20	3.30	99	495	1	33
		872	Pre-Intermediate ESL Grammar	31	23	0.20	3.10	93	465	1	30
		873	Intermediate ESL Grammar	34	20	0.20	3.40	102	510	1	35
		875	Advanced ESL Grammar & Editing	25	20	0.20	2.50	75	375	1	35
	880	Workplace English for ESOL	28	23	0.20	5.13	154	770	1	35	
Fall 2010	ESOL	400	English Comp-Nonnative Speaker	106	81	1.00	17.80	534	534	3	78
		655	ESL Supplement	98	91	0.20	8.70	261	1,305	1	120
		801	Basic Conversational English	31	27	0.13	2.38	71	535	1	35
		803	Workplace English for ESOL	36	31	0.20	6.60	198	990	1	35
		830	ENGL Spkrs Other Languages III	39	30	0.60	11.70	351	585	1	35
		840	ENGL Spkrs Other Languages IV	73	68	1.20	21.90	657	548	2	70
		853	Int. ESL Listening & Speaking	40	31	0.20	4.00	120	600	1	35
		861	Hi-Beginning ESL Read & Write	28	21	0.27	3.73	112	420	1	35
		862	Pre-Int. ESL Read & Write	28	27	0.27	3.73	112	420	1	30
		863	Int. ESL Reading & Writing	40	27	0.27	5.33	160	600	1	35
		872	Pre-Intermediate ESL Grammar	67	61	0.40	6.70	201	503	2	65
		874	High-Intermediate ESL Grammar	42	32	0.20	4.20	126	630	1	35
Spring 2007	ESOL	400	English Comp-Nonnative Speaker	131	114	1.67	26.20	786	472	5	154
		655	ESL Supplement	76	70	0.40	8.28	248	621	2	1,998
		801	Basic Conversational English	24	17	0.13	2.40	72	540	1	35
		802	Int. Conversational English	30	27	0.13	3.00	90	675	1	35
		810	ENGL Spkrs Other Languages I	21	20	0.60	7.00	210	350	1	35
		812	ENGL Spkrs Other Lang. I (2nd)	20	19	0.27	3.33	100	375	1	35
		822	ENGL Spkrs Other Lang II (2nd)	16	13	0.27	2.67	80	300	1	35
		830	ENGL Spkrs Other Languages III	33	26	0.60	11.00	330	550	1	35
		832	ENGL Spkrs Other Lang III (2)	26	18	0.27	4.33	130	487	1	35
		840	ENGL Spkrs Other Languages IV	71	52	1.20	23.67	710	592	2	70
		842	ENGL Spkrs Other Lang IV (2nd)	37	33	0.60	6.94	208	347	2	35
890	Read & Comp Practice for ESL	16	16	0.33	3.44	103	310	1	12		
Spring 2008	ESOL	400	English Comp-Nonnative Speaker	187	156	2.67	38.93	1,168	438	8	208
		655	ESL Supplement	67	65	0.40	7.14	214	535	2	1,998
		801	Basic Conversational English	25	18	0.13	2.67	80	600	1	35
		802	Int. Conversational English	39	26	0.27	4.16	125	468	2	70
		820	ENGL Spkrs Other Languages II	23	22	0.60	7.82	235	391	1	35
		830	ENGL Spkrs Other Languages III	30	24	0.60	10.20	306	510	1	35
		832	ENGL Spkrs Other Lang III (2)	24	20	0.27	4.16	125	468	1	35
		840	ENGL Spkrs Other Languages IV	56	40	1.20	19.04	571	476	2	70

				Census Headcount	End of Term Headcount	FTEF	FTES	WSCH	Load	Sections	Max Enroll		
		842	ENGL Spkrs Other Lang IV (2nd)	35	32	0.60	6.84	205	342	2	65		
		861	Hi-Beginning ESL Read & Write	25	22	0.27	4.33	130	487	1	35		
		871	High-Beginning ESL Grammar	28	24	0.20	3.92	118	588	1	35		
		875	Advanced ESL Grammar & Editing	19	10	0.20	1.90	57	285	1	35		
<b>Spring 2009</b>	ESOL	400	English Comp-Nonnative Speaker	158	130	1.67	26.33	790	474	5	130		
		655	ESL Supplement	97	87	0.20	8.10	243	1,215	1	85		
		802	Int. Conversational English	16	10	0.13	1.07	32	240	1	30		
		830	ENGL Spkrs Other Languages III	34	31	0.60	10.20	306	510	1	35		
		840	ENGL Spkrs Other Languages IV	69	52	1.20	20.70	621	518	2	70		
		851	Hi-Beginning ESL Listen&Speak	33	25	0.20	3.63	109	545	1	30		
		852	Pre-Int. ESL Listen & Speak	38	24	0.20	4.05	122	608	1	35		
		862	Pre-Int. ESL Read & Write	59	52	0.53	7.87	236	442	2	70		
		864	High-Int. ESL Reading&Writing	29	22	0.27	3.87	116	435	1	35		
		872	Pre-Intermediate ESL Grammar	58	54	0.40	5.97	179	448	2	70		
		874	High-Intermediate ESL Grammar	40	29	0.20	4.00	120	600	1	35		
		<b>Spring 2010</b>	ESOL	400	English Comp-Nonnative Speaker	126	111	1.33	20.93	628	471	4	104
				655	ESL Supplement	108	103	0.20	9.80	294	1,471	1	130
				801	Basic Conversational English	36	34	0.13	2.40	72	540	1	35
830	ENGL Spkrs Other Languages III			30	24	0.60	9.00	270	450	1	35		
840	ENGL Spkrs Other Languages IV			64	51	1.20	19.20	576	480	2	70		
852	Pre-Int. ESL Listen & Speak			34	31	0.20	3.40	102	510	1	35		
854	High-Int. ESL Listen & Speak			34	23	0.20	3.97	119	595	1	35		
861	Hi-Beginning ESL Read & Write			24	23	0.27	3.44	103	387	1	35		
862	Pre-Int. ESL Read & Write			71	60	0.53	9.47	284	532	2	70		
864	High-Int. ESL Reading&Writing			33	25	0.27	4.40	132	495	1	35		
871	High-Beginning ESL Grammar			40	31	0.20	4.00	120	600	1	35		
872	Pre-Intermediate ESL Grammar			48	42	0.20	4.80	144	720	1	35		
873	Intermediate ESL Grammar			27	20	0.20	2.70	81	405	1	35		
874	High-Intermediate ESL Grammar			22	18	0.20	2.20	66	330	1	35		
880	Workplace English for ESOL			32	26	0.20	3.20	96	480	1	35		
<b>Spring 2011</b>	ESOL	400	English Comp-Nonnative Speaker	117	96	1.33	19.49	585	438	4	104		
		655	ESL Supplement	72	67	0.20	6.65	200	998	1	130		
		802	Int. Conversational English	17	17	0.13	1.42	43	319	1	30		
		803	Workplace English for ESOL	25	19	0.20	2.50	75	375	1	35		
		830	ENGL Spkrs Other Languages III	33	32	0.60	9.90	297	495	1	35		
		840	ENGL Spkrs Other Languages IV	70	63	1.20	21.00	630	525	2	70		
		852	Pre-Int. ESL Listen & Speak	29	21	0.20	3.67	110	551	1	35		
		853	Int. ESL Listening & Speaking	29	27	0.20	2.90	87	435	1	35		
		854	High-Int. ESL Listen & Speak	33	23	0.20	3.85	116	578	1	35		
		862	Pre-Int. ESL Read & Write	61	50	0.53	8.13	244	457	2	70		
		864	High-Int. ESL Reading&Writing	44	28	0.27	5.87	176	660	1	35		
		871	High-Beginning ESL Grammar	35	30	0.20	3.50	105	525	1	35		
		872	Pre-Intermediate ESL Grammar	23	18	0.20	2.30	69	345	1	35		
		873	Intermediate ESL Grammar	42	27	0.20	4.20	126	630	1	35		
		875	Advanced ESL Grammar & Editing	35	31	0.20	3.50	105	525	1	35		
<b>Summer 2011</b>	ESOL	400	English Comp-Nonnative Speaker	45	30	0.67	8.74	262	393	2	52		

				Census Headcount	End of Term Headcount	FTEF	FTES	WSCH	Load	Sections	Max Enroll
<b>2006</b>		875	English Grammar for ESOL	30	24	0.20	2.82	85	423	1	30
<b>Summer 2007</b>	ESOL	400	English Comp-Nonnative Speaker	47	38	0.33	9.67	290	870	1	30
		875	Advanced ESL Grammar & Editing	36	28	0.20	3.84	115	576	1	30
<b>Summer 2008</b>	ESOL	400	English Comp-Nonnative Speaker	49	38	0.67	10.19	306	459	2	52
		875	Advanced ESL Grammar & Editing	33	26	0.20	4.22	127	634	1	32
		890	Read & Comp Practice for ESL	16	11	0.20	2.19	66	329	1	35
<b>Summer 2009</b>	ESOL	400	English Comp-Nonnative Speaker	56	49	0.67	9.86	296	444	2	52
		875	Advanced ESL Grammar & Editing	28	21	0.20	2.61	78	392	1	32
<b>Summer 2010</b>	ESOL	655	ESL Supplement	27	20	0.13	1.15	34	258	1	50
		875	Advanced ESL Grammar & Editing	37	26	0.20	3.45	104	518	1	35