

ESOL Department Student Characteristics 2006/07 through 2010/11

Unique Headcount by Term

FA06	FA07	FA08	FA09	FA10	SP07	SP08	SP09	SP10	SP11	SU06	SU07	SU08	SU09	SU10
435	491	464	420	414	418	443	429	437	425	72	80	95	79	54

Unique Headcount by Gender

	2006/07		2007/08		2008/09		2009/10		2010/11		Change 09/10-10/11	5 Year Row Total & Average	
Female	390	54%	468	56%	445	59%	398	55%	362	57%	-9%	2,063	56%
Male	321	44%	315	41%	309	38%	303	43%	267	41%	-12%	1,515	41%
Unreported	9	2%	15	2%	19	3%	14	2%	17	3%	21%	74	2%
Column Total	720	100%	798	100%	773	100%	715	100%	646	100%	-10%	3,652	100%

Unique Headcount by Ethnicity

	2006/07		2007/08		2008/09		2009/10		2010/11		Change 09/10-10/11	5 Year Row Total & Average	
African American	2	0%			1	0%	1	0%	1	0%	0%	5	0%
Asian	301	41%	379	48%	405	54%	386	56%	356	58%	-8%	1,827	52%
Filipino	72	10%	65	8%	45	5%	40	5%	28	4%	-30%	250	6%
Hispanic	265	37%	258	31%	220	27%	191	25%	158	22%	-17%	1,092	28%
White	48	7%	60	8%	50	7%	41	6%	48	7%	17%	247	7%
Other	13	2%	9	1%								22	0%
Unknown	19	3%	32	4%	52	7%	56	8%	55	9%	-2%	214	7%
Column Total	720	100%	803	100%	773	100%	715	100%	646	100%	-10%	3,657	100%

Unique Headcount by Age

	2006/07		2007/08		2008/09		2009/10		2010/11		Change 09/10-10/11	5 Year Row Total & Average	
Under 18	45	7%	52	8%	23	3%	17	3%	15	2%	-12%	152	4%
Age 18-22	239	34%	277	39%	279	39%	262	39%	210	34%	-20%	1,267	37%
Age 23-28	155	20%	177	21%	172	23%	160	21%	173	26%	8%	837	22%
Age 29-39	148	21%	160	18%	171	21%	148	21%	131	19%	-11%	758	20%
Age 40-49	101	13%	94	9%	88	10%	90	11%	88	12%	-2%	461	11%
Age 50-59	32	4%	40	4%	40	4%	36	4%	36	5%	0%	184	4%
Age 60+	10	2%	12	1%	12	2%	15	2%	9	2%	-40%	58	2%
Column Total	730	100%	812	100%	785	100%	728	100%	662	100%	-9%	3,717	100%

Source: SMCCCD Data Warehouse

*Note: Counts and percents are based on census figures.

**Note: The variations in total numbers each year within the demographic segments are due to missing data points, and, in the case of age, also due to students crossing a category threshold during a year (18-22 in Fall, 23-28 in Spring).

Unique Headcount by Status

	2006/07		2007/08		2008/09		2009/10		2010/11		Change 09/10-10/11	5 Year Row Total & Average	
Continuing	346	44%	406	41%	382	46%	423	54%	441	63%	4%	1,998	50%
Currently K-12	53	8%	51	8%	12	2%	10	1%	11	1%	10%	137	4%
First-Time	214	27%	185	24%	200	24%	154	18%	112	14%	-27%	865	21%
First-Time Transfer	118	14%	168	21%	179	21%	166	20%	120	15%	-28%	751	19%
Returning	67	6%	68	5%	77	6%	52	5%	45	5%	-13%	309	5%
Returning Transfer	18	2%	20	1%	27	2%	24	2%	26	2%	8%	115	2%
Column Total	816	100%	898	100%	877	100%	829	100%	755	100%	-9%	4,175	100%

Unique Headcount by Course-Taking Pattern (Fall and Spring only)

	2006/07		2007/08		2008/09		2009/10		2010/11		Change 09/10-10/11	5 Year Row Total & Average	
Day	422	58%	492	63%	450	59%	428	56%	371	54%	-13%	2,163	58%
Day and Evening	27	3%	29	3%	46	6%	93	10%	92	12%	-1%	287	7%
Evening	301	39%	317	34%	323	36%	282	33%	263	34%	-7%	1,486	35%
Column Total	750	100%	838	100%	819	100%	803	100%	726	100%	-10%	3,936	100%

Unique Headcount by Educational Goal

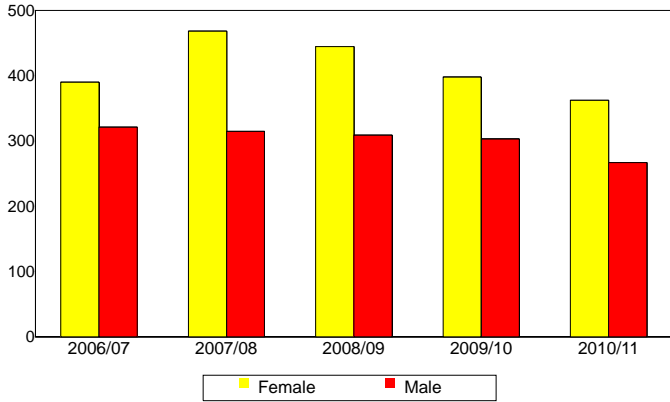
	2006/07		2007/08		2008/09		2009/10		2010/11		Change 09/10-10/11	5 Year Row Total & Average	
Transfer	327	44%	303	36%	325	42%	307	43%	264	41%	-14%	1,526	41%
AA/AS w/o Transfer	48	6%	40	4%	36	5%	51	7%	43	6%	-16%	218	6%
Certificate w/o Transfer	14	2%	21	3%	32	4%	21	3%	21	3%	0%	109	3%
Acquire/Update Job Skills	83	11%	72	8%	58	7%	51	6%	46	7%	-10%	310	8%
Complete HS Credits	40	6%	48	6%	21	2%	14	2%	9	1%	-36%	132	3%
Educational Development	108	15%	87	9%	60	7%	78	10%	63	9%	-19%	396	10%
Formulate Career Plans/Goals			2	0%	8	1%	7	1%	6	1%	-14%	23	1%
Improve Basic Skills	14	2%	42	6%	67	10%	49	7%	68	10%	39%	240	7%
Maintain Certificate/Licensure	1	0%	6	1%	8	1%	4	0%	5	1%	25%	24	1%
Undecided/Unreported	99	14%	214	26%	174	21%	144	20%	130	20%	-10%	761	21%
Column Total	734	100%	835	100%	789	100%	726	100%	655	100%	-10%	3,739	100%

Source: SMCCCD Data Warehouse

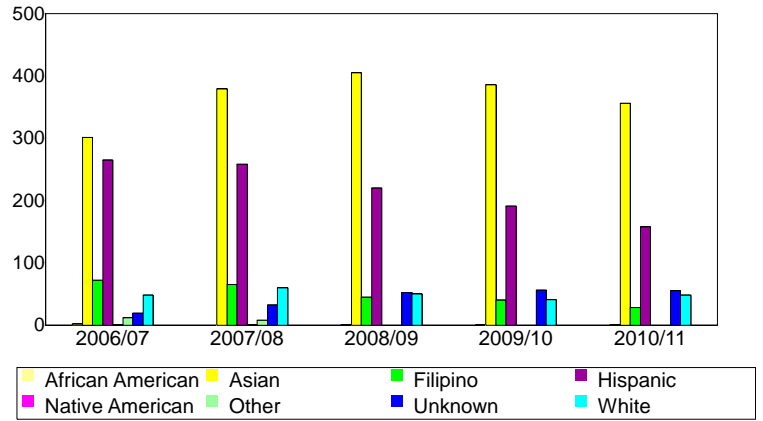
*Note: Counts and percents are based on census figures for summer, fall and spring.

**Note: The variations in total numbers each year within the Status, Course-Taking, and Educational Goal tables are due to missing data points and also due to students changing Status, Pattern, or Educational Goal within a given year - e.g. "First Time Student" in Fall and "Continuing Student" in Spring.

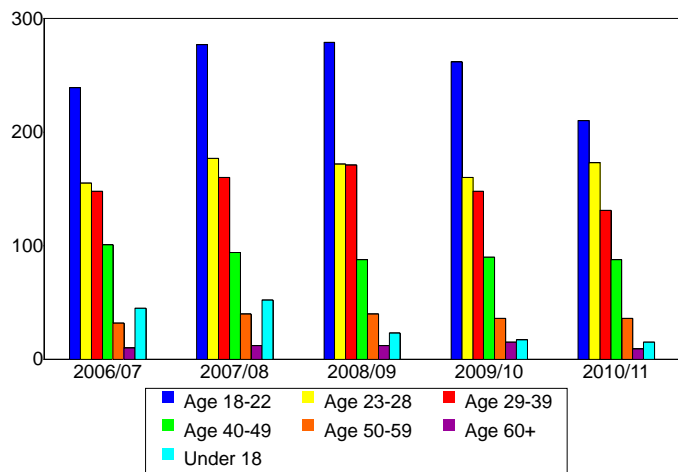
Unique Headcount by Gender



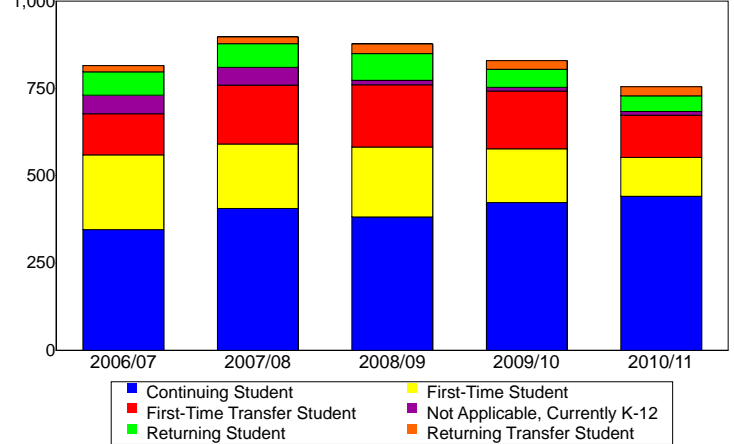
Unique Headcount by Ethnicity



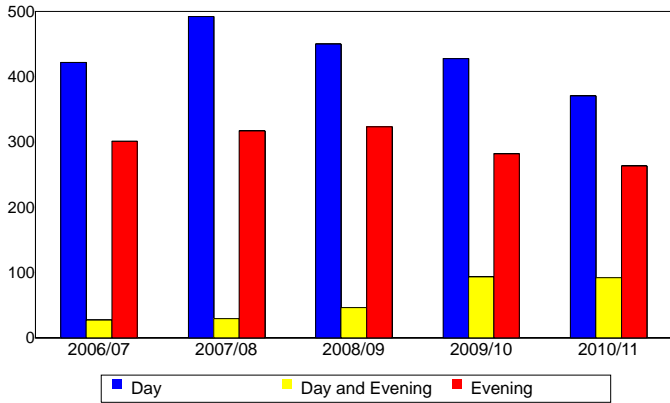
Unique Headcount by Student Age



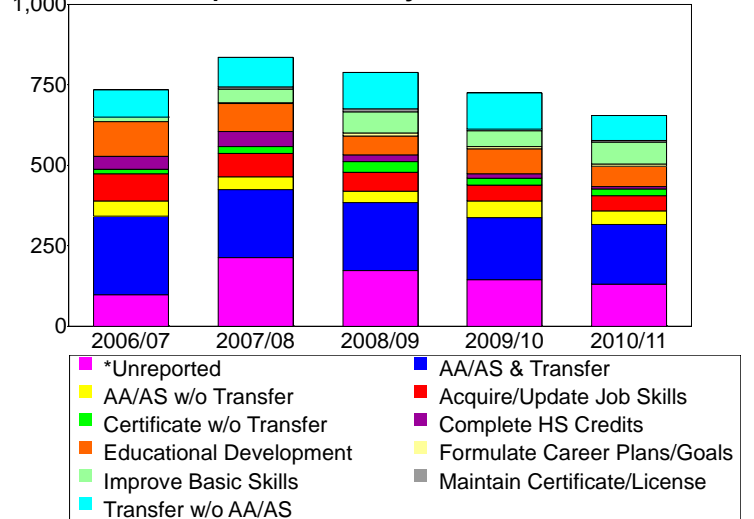
Unique Headcount by Enrollment Status



Unique Headcount by Course-Taking Pattern



Unique Headcount by Educational Goal



Source: SMCCCD Data Warehouse