

## Fashion Merchandising Department Productivity: By Year and By Term 2006/07 through 2010/11

	Census Headcount	End of Term Headcount	FTEF	FTES	WSCH	Load	Sections	Max Enroll
2006/07	160	136	0.90	16.12	484	537	8	221
2007/08	121	104	0.70	12.03	361	516	7	181
2008/09	193	165	1.30	19.36	581	447	10	281
2009/10	258	215	1.30	26.12	784	603	9	261
2010/11	309	247	1.70	31.35	941	553	11	380

	Census Headcount	End of Term Headcount	FTEF	FTES	WSCH	Load	Sections	Max Enroll
Fall 2006	77	66	0.50	7.85	236	471	4	120
Fall 2007	38	33	0.30	3.80	114	380	3	80
Fall 2008	104	87	0.70	10.46	314	448	5	145
Fall 2009	129	107	0.70	13.22	397	566	5	160
Fall 2010	174	146	0.90	17.88	537	596	6	200
Spring 2007	83	70	0.40	8.27	248	620	4	101
Spring 2008	83	71	0.40	8.23	247	618	4	101
Spring 2009	89	78	0.60	8.90	267	445	5	136
Spring 2010	129	108	0.60	12.90	387	645	4	101
Spring 2011	135	101	0.80	13.47	404	505	5	180

Source: SMCCCD Data Warehouse

Census Headcount: Number of duplicated headcount at final census.

End of Term Headcount: Number of duplicated headcount at the end of the term.

FTEF: Total number of full time equivalent faculty assigned.

FTES: Total number of full time equivalent students enrolled at first census.

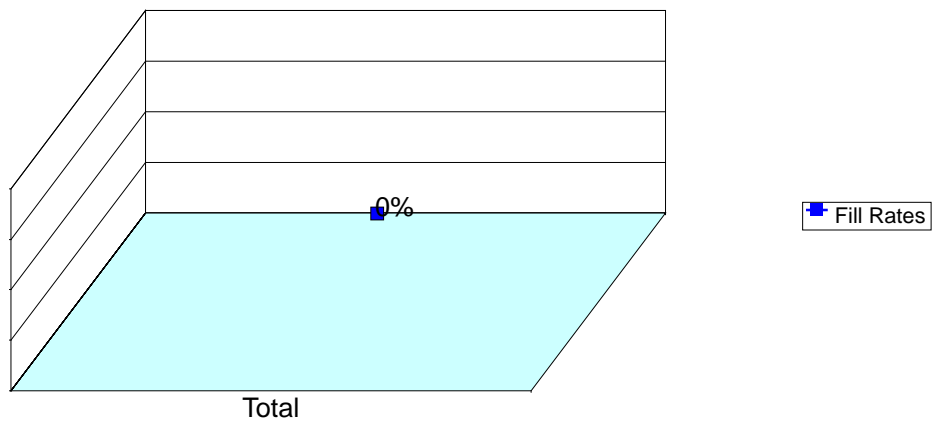
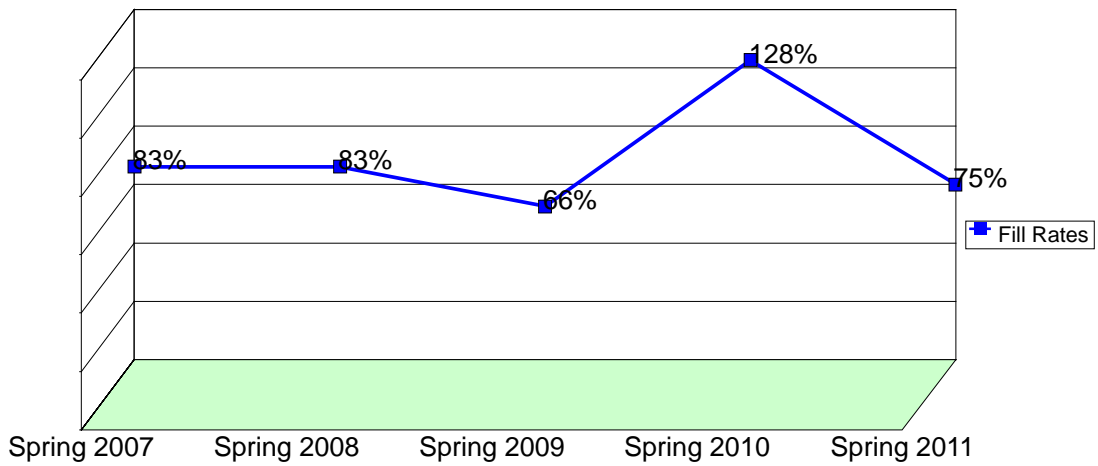
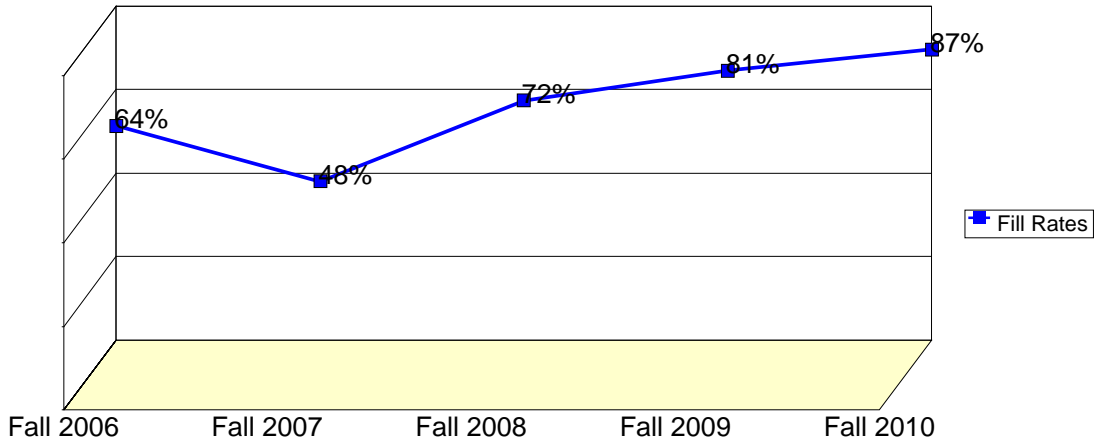
WSCH: Weekly student contact hours generated by census enrollments.

Load: The ratio of WSCH to FTEF, used to measure productivity.

Sections: Total number of sections offered per semester.

Max Enroll: The enrollment capacity or maximum enrollment as defined in curriculum.

## Department Fill Rates by Term



Source: SMCCCD Data Warehouse

Fill Rates: The percent a class fills/enrolls based on capacity or enrollment maximum defined in the curriculum (does not include positive attendance or open entry/open exit classes).

## Department Productivity: Term by Course

				Census	End of	FTEF	FTES	WSCH	Load	Sections	Max
				Headcount	Term						Enroll
<b>Fall 2006</b>	FASH	117	Creating A Personal Image	15	13	0.20	1.65	50	248	1	40
		119	Clothing, Culture and Society	32	31	0.10	3.20	96	960	1	40
		151	Fashion Merchandising	30	22	0.20	3.00	90	450	1	40
		690	Special Projects	0	0	0.00				1	20
<b>Fall 2007</b>	FASH	119	Clothing, Culture and Society	21	19	0.10	2.10	63	630	1	40
		151	Fashion Merchandising	17	14	0.20	1.70	51	255	1	40
		690	Special Projects	0	0	0.00				1	20
<b>Fall 2008</b>	FASH	117	Creating A Personal Image	25	20	0.20	2.75	83	413	1	35
		119	Clothing, Culture and Society	22	20	0.10	2.20	66	660	1	40
		151	Fashion Merchandising	42	35	0.20	4.20	126	630	1	40
		153	Fashion Apparel	11	11	0.20	1.17	35	176	1	30
		690	Special Projects	4	1	0.00	0.13	4	#INF	1	20
<b>Fall 2009</b>	FASH	117	Creating A Personal Image	19	13	0.20	2.22	67	333	1	40
		119	Clothing, Culture and Society	33	29	0.10	3.30	99	990	1	40
		151	Fashion Merchandising	45	38	0.20	4.50	135	675	1	40
		156	Fashion Show Production	31	26	0.20	3.10	93	465	1	40
		690	Special Projects	1	1	0.00	0.10	3	#INF	1	20
<b>Fall 2010</b>	FASH	117	Creating A Personal Image	37	30	0.20	4.07	122	611	1	40
		119	Clothing, Culture and Society	50	41	0.10	5.00	150	1,500	1	40
		151	Fashion Merchandising	41	33	0.20	4.10	123	615	1	40
		153	Fashion Apparel	17	16	0.20	1.81	54	272	1	40
		156	Fashion Show Production	28	25	0.20	2.80	84	420	1	40
		690	Special Projects	1	1	0.00	0.10	3	#INF	1	20
<b>Spring 2007</b>	FASH	113	Textiles	26	25	0.10	2.60	78	780	1	41
		119	Clothing, Culture, & Society	27	25	0.10	2.70	81	810	1	40
		151	Fashion Merchandising	27	19	0.20	2.70	81	405	1	40
		690	Special Projects	3	1	0.00	0.27	8	#INF	1	20
<b>Spring 2008</b>	FASH	113	Textiles	27	24	0.10	2.70	81	810	1	41
		119	Clothing, Culture, & Society	24	21	0.10	2.40	72	720	1	40
		151	Fashion Merchandising	30	24	0.20	3.00	90	450	1	40
		690	Special Projects	2	2	0.00	0.13	4	#INF	1	20
<b>Spring 2009</b>	FASH	113	Textiles	23	21	0.10	2.30	69	690	1	41
		119	Clothing, Culture, & Society	24	22	0.10	2.40	72	720	1	40
		151	Fashion Merchandising	24	17	0.20	2.40	72	360	1	40
		152	Visual Merchandising	18	18	0.20	1.80	54	270	1	35
		690	Special Projects	0	0	0.00				1	20
<b>Spring 2010</b>	FASH	113	Textiles	49	43	0.20	4.90	147	735	1	41
		119	Clothing, Culture, & Society	42	34	0.20	4.20	126	630	1	40
		151	Fashion Merchandising	37	30	0.20	3.70	111	555	1	40
		690	Special Projects	1	1	0.00	0.10	3	#INF	1	20
<b>Spring 2011</b>	FASH	113	Textiles	34	26	0.20	3.40	102	510	1	40
		119	Clothing, Culture, & Society	50	39	0.20	5.00	150	750	1	40
		151	Fashion Merchandising	32	19	0.20	3.20	96	480	1	40
		152	Visual Merchandising	18	16	0.20	1.80	54	270	1	40
		690	Special Projects	1	1	0.00	0.07	2	#INF	1	20



