

## Family & Consumer Science Department Productivity: By Year and By Term 2006/07 through 2010/11

	Census Headcount	End of Term Headcount	FTEF	FTES	WSCH	Load	Sections	Max Enroll
2006/07	316	236	2.30	<b>31.80</b>	954	415	19	491
2007/08	382	296	2.73	<b>38.94</b>	1,168	427	22	586
2008/09	364	275	2.53	<b>35.98</b>	1,080	426	21	551
2009/10	474	383	2.53	<b>49.22</b>	1,476	583	18	530
2010/11	331	258	1.60	<b>32.96</b>	989	618	10	330

	Census Headcount	End of Term Headcount	FTEF	FTES	WSCH	Load	Sections	Max Enroll
Fall 2006	159	123	1.10	<b>16.14</b>	484	440	9	225
Fall 2007	205	162	1.33	<b>21.05</b>	632	474	11	280
Fall 2008	174	130	1.13	<b>17.05</b>	512	451	10	245
Fall 2009	224	180	1.33	<b>23.16</b>	695	521	11	285
Fall 2010	123	95	0.60	<b>12.48</b>	374	624	4	125
Spring 2007	157	113	1.20	<b>15.67</b>	470	392	10	266
Spring 2008	177	134	1.40	<b>17.88</b>	537	383	11	306
Spring 2009	190	145	1.40	<b>18.93</b>	568	406	11	306
Spring 2010	159	122	0.80	<b>16.35</b>	491	613	5	165
Spring 2011	160	125	0.80	<b>16.00</b>	480	600	5	165
Summer 2009	91	81	0.40	<b>9.71</b>	291	728	2	80
Summer 2010	48	38	0.20	<b>4.48</b>	134	672	1	40

Source: SMCCCD Data Warehouse

Census Headcount: Number of duplicated headcount at final census.

End of Term Headcount: Number of duplicated headcount at the end of the term.

FTEF: Total number of full time equivalent faculty assigned.

FTES: Total number of full time equivalent students enrolled at first census.

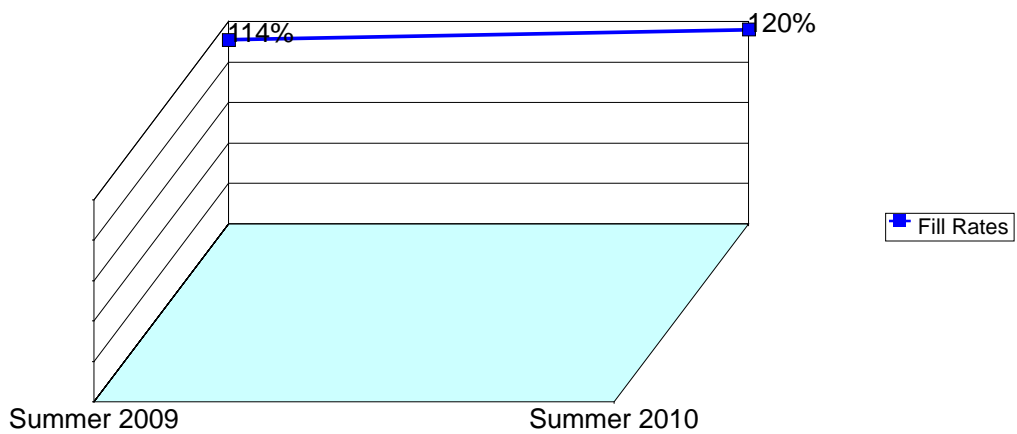
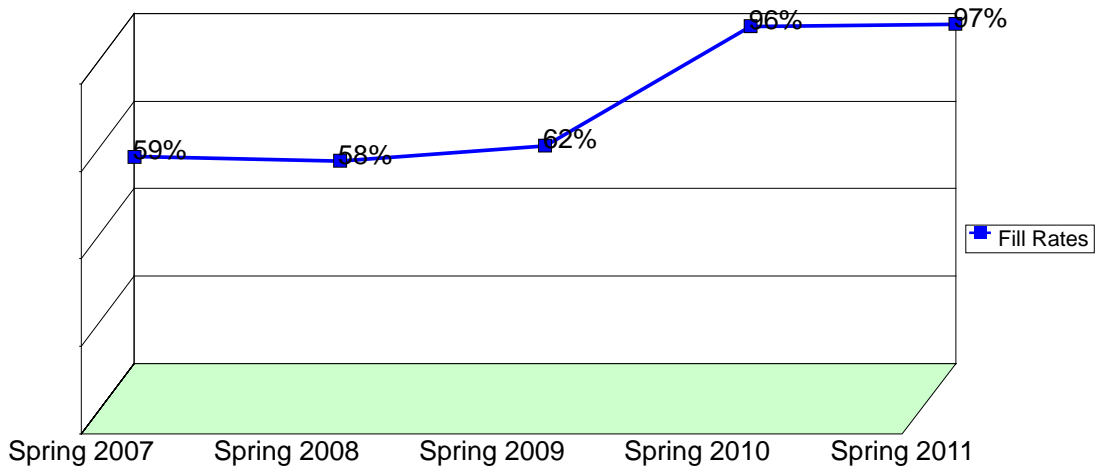
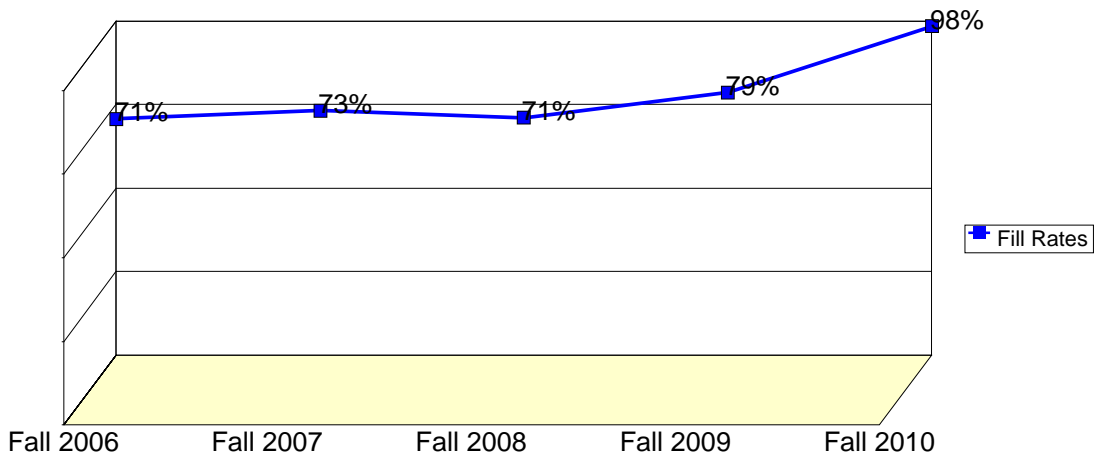
WSCH: Weekly student contact hours generated by census enrollments.

Load: The ratio of WSCH to FTEF, used to measure productivity.

Sections: Total number of sections offered per semester.

Max Enroll: The enrollment capacity or maximum enrollment as defined in curriculum.

## Department Fill Rates by Term



Source: SMCCCD Data Warehouse

Fill Rates: The percent a class fills/enrolls based on capacity or enrollment maximum defined in the curriculum (does not include positive attendance or open entry/open exit classes).

## Department Productivity: Term by Course

				Census Headcount	End of Term Headcount	FTEF	FTES	WSCH	Load	Sections	Max Enroll
<b>Fall 2006</b>	FCS	119	Clothing, Culture and Society	19	18	0.10	1.90	57	570	1	40
		212	Child, Family & Community	10	7	0.20	1.03	31	155	2	80
		213	Child-Parent Relations	9	8	0.20	0.94	28	141	2	80
		310	Nutrition	112	82	0.60	11.50	345	575	3	120
		690	Individual Study in FCS	9	8	0.00	0.77	23	#INF	1	5
<b>Fall 2007</b>	FCS	119	Clothing, Culture and Society	25	18	0.10	2.50	75	750	1	40
		212	Child, Family & Community	7	6	0.20	0.79	24	119	2	80
		213	Child-Parent Relations	2	2	0.20	0.20	6	30	2	80
		310	Nutrition	161	131	0.80	16.86	506	632	4	155
		311	Children's Nutrition	3	1	0.03	0.10	3	93	1	40
		690	Individual Study in FCS	7	4	0.00	0.60	18	#INF	1	5
<b>Fall 2008</b>	FCS	119	Clothing, Culture and Society	22	18	0.10	2.20	66	660	1	40
		212	Child, Family & Community	11	9	0.20	1.14	34	171	2	80
		213	Child-Parent Relations	13	11	0.20	1.34	40	201	2	80
		310	Nutrition	116	82	0.60	11.60	348	580	3	120
		311	Children's Nutrition	4	3	0.03	0.14	4	124	1	40
		690	Individual Study in FCS	8	7	0.00	0.63	19	#INF	1	5
<b>Fall 2009</b>	FCS	119	Clothing, Culture and Society	20	17	0.10	2.00	60	600	1	40
		212	Child, Family & Community	13	11	0.20	1.37	41	205	2	80
		213	Child-Parent Relations	11	9	0.20	1.13	34	170	2	80
		310	Nutrition	167	134	0.80	18.05	542	677	4	160
		311	Children's Nutrition	9	6	0.03	0.31	9	278	1	40
		690	Individual Study in FCS	4	3	0.00	0.30	9	#INF	1	5
<b>Fall 2010</b>	FCS	310	Nutrition	120	92	0.60	12.38	371	619	3	120
		690	Individual Study in FCS	3	3	0.00	0.10	3	#INF	1	5
<b>Spring 2007</b>	FCS	113	Textiles	11	9	0.10	1.10	33	330	1	41
		119	Clothing, Culture and Society	19	17	0.10	1.90	57	570	1	40
		212	Child, Family & Community	4	4	0.20	0.40	12	60	2	80
		213	Child-Parent Relations	11	10	0.20	1.10	33	165	2	80
		310	Nutrition	108	69	0.60	10.80	324	540	3	120
		690	Special Projects	4	4		0.37	11		1	5
<b>Spring 2008</b>	FCS	113	Textiles	8	8	0.10	0.80	24	240	1	41
		119	Clothing, Culture and Society	15	10	0.10	1.50	45	450	1	40
		212	Child, Family & Community	4	3	0.20	0.40	12	60	2	80
		213	Child-Parent Relations	8	7	0.20	0.80	24	120	2	80
		310	Nutrition	138	103	0.80	14.15	425	531	4	160
		690	Special Projects	4	3		0.23	7		1	5
<b>Spring 2009</b>	FCS	113	Textiles	18	15	0.10	1.80	54	540	1	41
		119	Clothing, Culture and Society	17	14	0.10	1.70	51	510	1	40
		212	Child, Family & Community	4	4	0.20	0.40	12	60	2	80
		213	Child-Parent Relations	8	8	0.20	0.80	24	120	2	80
		310	Nutrition	140	101	0.80	14.00	420	525	4	160
		690	Special Projects	3	3		0.23	7		1	5
<b>Spring 2010</b>	FCS	310	Nutrition	152	118	0.80	15.92	478	597	4	160
		690	Special Projects	7	4	0.00	0.43	13	#INF	1	5
<b>Spring 2011</b>	FCS	310	Nutrition	156	121	0.80	15.60	468	585	4	160
		690	Special Projects	4	4	0.00	0.40	12	#INF	1	5

				<b>Census Headcount</b>	<b>End of Term Headcount</b>	<b>FTEF</b>	<b>FTES</b>	<b>WSCH</b>	<b>Load</b>	<b>Sections</b>	<b>Max Enroll</b>
<b>Summer 20</b>	FCS	310	Nutrition	91	81	0.40	9.71	291	728	2	80
<b>Summer 21</b>	FCS	310	Nutrition	48	38	0.20	4.48	134	672	1	40