

## Geology Department Productivity: By Year and By Term 2006/07 through 2010/11

|         | Census<br>Headcount | End of<br>Term<br>Headcount | FTEF | FTES  | WSCH  | Load | Sections | Max<br>Enroll |
|---------|---------------------|-----------------------------|------|-------|-------|------|----------|---------------|
| 2006/07 | 446                 | 395                         | 2.60 | 55.65 | 1,669 | 642  | 14       | 519           |
| 2007/08 | 346                 | 310                         | 2.60 | 43.03 | 1,291 | 496  | 14       | 380           |
| 2008/09 | 381                 | 338                         | 2.44 | 47.77 | 1,433 | 587  | 13       | 411           |
| 2009/10 | 369                 | 308                         | 2.60 | 49.06 | 1,472 | 566  | 13       | 393           |
| 2010/11 | 270                 | 230                         | 1.36 | 29.42 | 883   | 649  | 6        | 255           |

|             | Census<br>Headcount | End of<br>Term<br>Headcount | FTEF | FTES  | WSCH | Load | Sections | Max<br>Enroll |
|-------------|---------------------|-----------------------------|------|-------|------|------|----------|---------------|
| Fall 2006   | 221                 | 198                         | 1.28 | 27.88 | 836  | 653  | 7        | 244           |
| Fall 2007   | 155                 | 138                         | 1.28 | 19.65 | 589  | 460  | 7        | 170           |
| Fall 2008   | 183                 | 158                         | 1.12 | 23.22 | 697  | 622  | 6        | 181           |
| Fall 2009   | 192                 | 160                         | 1.48 | 26.71 | 801  | 541  | 7        | 208           |
| Fall 2010   | 120                 | 103                         | 0.76 | 14.90 | 447  | 588  | 3        | 120           |
| Spring 2007 | 200                 | 177                         | 1.12 | 25.10 | 753  | 672  | 6        | 220           |
| Spring 2008 | 170                 | 154                         | 1.12 | 21.40 | 642  | 573  | 6        | 155           |
| Spring 2009 | 160                 | 143                         | 1.12 | 20.50 | 615  | 549  | 6        | 175           |
| Spring 2010 | 132                 | 116                         | 0.92 | 18.15 | 545  | 592  | 5        | 130           |
| Spring 2011 | 93                  | 82                          | 0.40 | 9.30  | 279  | 698  | 2        | 80            |
| Summer 2006 | 25                  | 20                          | 0.20 | 2.67  | 80   | 400  | 1        | 55            |
| Summer 2007 | 21                  | 18                          | 0.20 | 1.98  | 59   | 297  | 1        | 55            |
| Summer 2008 | 38                  | 37                          | 0.20 | 4.05  | 122  | 608  | 1        | 55            |
| Summer 2009 | 45                  | 32                          | 0.20 | 4.20  | 126  | 630  | 1        | 55            |
| Summer 2010 | 57                  | 45                          | 0.20 | 5.22  | 157  | 783  | 1        | 55            |

Source: SMCCCD Data Warehouse

Census Headcount: Number of duplicated headcount at final census.

End of Term Headcount: Number of duplicated headcount at the end of the term.

FTEF: Total number of full time equivalent faculty assigned.

FTES: Total number of full time equivalent students enrolled at first census.

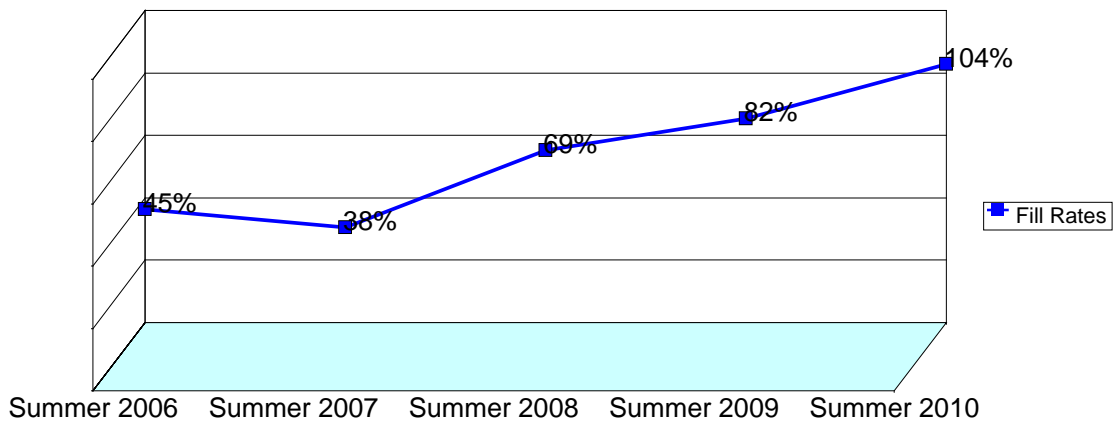
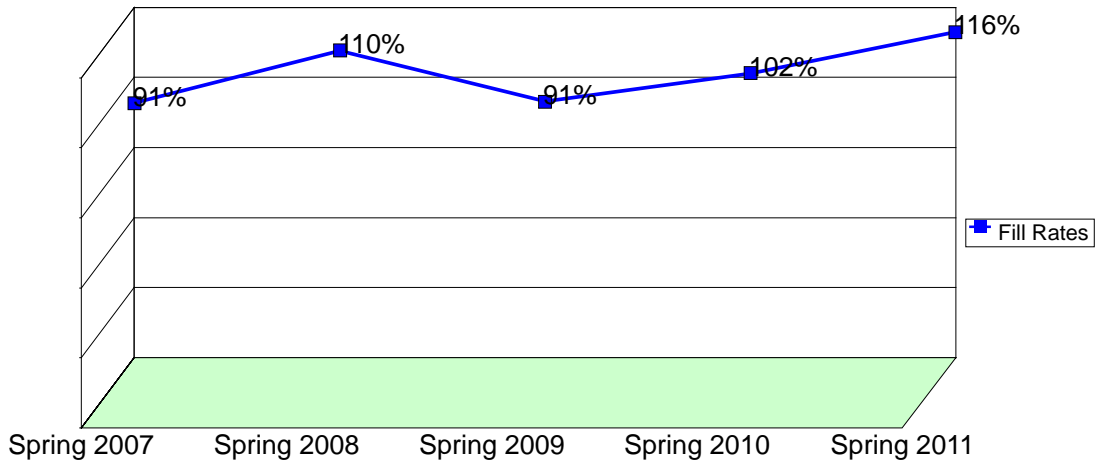
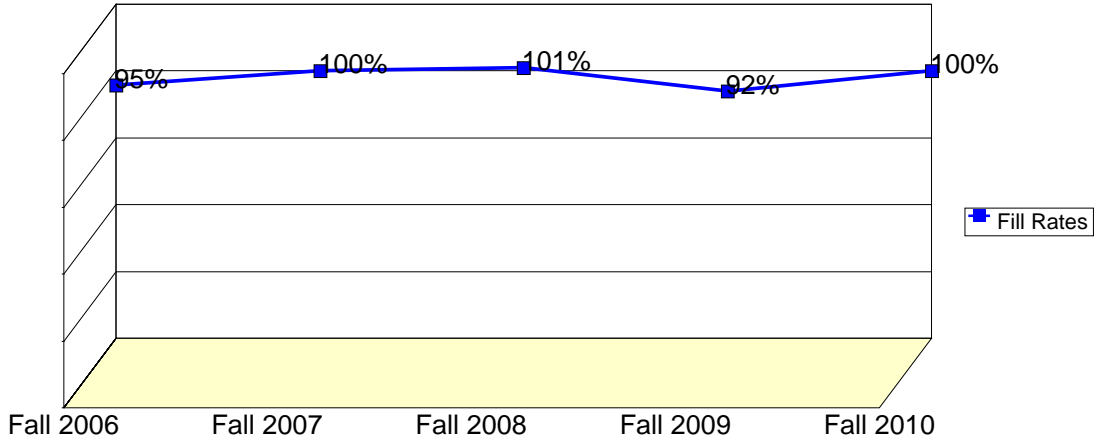
WSCH: Weekly student contact hours generated by census enrollments.

Load: The ratio of WSCH to FTEF, used to measure productivity.

Sections: Total number of sections offered per semester.

Max Enroll: The enrollment capacity or maximum enrollment as defined in curriculum.

## Department Fill Rates by Term



Source: SMCCCD Data Warehouse

Fill Rates: The percent a class fills/enrolls based on capacity or enrollment maximum defined in the curriculum (does not include positive attendance or open entry/open exit classes).

## Department Productivity: Term by Course

|                    |      |     |                             | Census<br>Headcount | End of<br>Term<br>Headcount | FTEF | FTES  | WSCH | Load | Sections | Max<br>Enroll |
|--------------------|------|-----|-----------------------------|---------------------|-----------------------------|------|-------|------|------|----------|---------------|
| <b>Fall 2006</b>   | GEOL | 100 | Survey of Geology           | 111                 | 100                         | 0.40 | 11.65 | 350  | 874  | 2        | 110           |
|                    |      | 105 | Environmental Earth Science | 42                  | 35                          | 0.20 | 4.20  | 126  | 630  | 1        | 55            |
|                    |      | 210 | General Geology             | 52                  | 49                          | 0.37 | 10.40 | 312  | 836  | 2        | 54            |
|                    |      |     | General Geology - Honors    | 2                   | 2                           | 0.15 | 0.53  | 16   | 109  | 1        | 27            |
|                    |      | 611 | Field Geology I             | 14                  | 12                          | 0.16 | 1.10  | 33   | 206  | 1        | 25            |
| <b>Fall 2007</b>   | GEOL | 100 | Survey of Geology           | 73                  | 64                          | 0.40 | 7.67  | 230  | 575  | 2        | 70            |
|                    |      | 105 | Environmental Earth Science | 32                  | 29                          | 0.20 | 3.20  | 96   | 480  | 1        | 35            |
|                    |      | 210 | General Geology             | 37                  | 34                          | 0.37 | 7.40  | 222  | 595  | 2        | 40            |
|                    |      |     | General Geology - Honors    | 3                   | 3                           | 0.15 | 0.60  | 18   | 123  | 1        | 20            |
|                    |      | 611 | Field Geology I             | 10                  | 8                           | 0.16 | 0.78  | 23   | 146  | 1        | 25            |
| <b>Fall 2008</b>   | GEOL | 100 | Survey of Geology           | 91                  | 79                          | 0.40 | 9.52  | 286  | 714  | 2        | 90            |
|                    |      | 105 | Environmental Earth Science | 47                  | 40                          | 0.20 | 4.70  | 141  | 705  | 1        | 45            |
|                    |      | 210 | General Geology             | 43                  | 38                          | 0.37 | 8.60  | 258  | 691  | 2        | 46            |
|                    |      |     | General Geology - Honors    | 2                   | 1                           | 0.15 | 0.40  | 12   | 82   | 1        | 23            |
|                    |      |     |                             |                     |                             |      |       |      |      |          |               |
| <b>Fall 2009</b>   | GEOL | 100 | Survey of Geology           | 80                  | 68                          | 0.40 | 8.43  | 253  | 633  | 2        | 90            |
|                    |      | 105 | Environmental Earth Science | 46                  | 39                          | 0.20 | 4.60  | 138  | 690  | 1        | 40            |
|                    |      | 210 | General Geology             | 62                  | 49                          | 0.73 | 12.84 | 385  | 525  | 3        | 78            |
|                    |      |     | General Geology - Honors    | 4                   | 4                           | 0.15 | 0.84  | 25   | 172  | 1        | 23            |
|                    |      |     |                             |                     |                             |      |       |      |      |          |               |
| <b>Fall 2010</b>   | GEOL | 105 | Environmental Earth Science | 91                  | 76                          | 0.40 | 9.10  | 273  | 683  | 2        | 90            |
|                    |      | 210 | General Geology             | 29                  | 27                          | 0.36 | 5.80  | 174  | 483  | 1        | 30            |
|                    |      |     |                             |                     |                             |      |       |      |      |          |               |
| <b>Spring 2007</b> | GEOL | 100 | Survey Of Geology           | 62                  | 54                          | 0.20 | 6.20  | 186  | 930  | 1        | 55            |
|                    |      |     | Survey of Geology           | 38                  | 37                          | 0.20 | 3.80  | 114  | 570  | 1        | 60            |
|                    |      | 105 | Environmental Earth Science | 49                  | 40                          | 0.20 | 4.90  | 147  | 735  | 1        | 55            |
|                    |      | 210 | General Geology             | 47                  | 42                          | 0.37 | 9.40  | 282  | 755  | 2        | 50            |
|                    |      |     | General Geology - Honors    | 4                   | 4                           | 0.15 | 0.80  | 24   | 164  | 1        | 25            |
|                    |      |     |                             |                     |                             |      |       |      |      |          |               |
| <b>Spring 2008</b> | GEOL | 100 | Survey Of Geology           | 43                  | 38                          | 0.20 | 4.30  | 129  | 645  | 1        | 40            |
|                    |      |     | Survey of Geology           | 40                  | 39                          | 0.20 | 4.00  | 120  | 600  | 1        | 40            |
|                    |      | 105 | Environmental Earth Science | 43                  | 36                          | 0.20 | 4.30  | 129  | 645  | 1        | 35            |
|                    |      | 210 | General Geology             | 38                  | 36                          | 0.37 | 7.60  | 228  | 611  | 2        | 40            |
|                    |      |     | General Geology - Honors    | 6                   | 5                           | 0.15 | 1.20  | 36   | 245  | 1        | 20            |
|                    |      |     |                             |                     |                             |      |       |      |      |          |               |
| <b>Spring 2009</b> | GEOL | 100 | Survey Of Geology           | 49                  | 47                          | 0.20 | 4.90  | 147  | 735  | 1        | 40            |
|                    |      |     | Survey of Geology           | 28                  | 22                          | 0.20 | 2.80  | 84   | 420  | 1        | 50            |
|                    |      | 105 | Environmental Earth Science | 38                  | 32                          | 0.20 | 3.80  | 114  | 570  | 1        | 35            |
|                    |      | 210 | General Geology             | 40                  | 38                          | 0.37 | 8.00  | 240  | 643  | 2        | 50            |
|                    |      |     | General Geology - Honors    | 5                   | 4                           | 0.15 | 1.00  | 30   | 204  | 1        | 25            |
|                    |      |     |                             |                     |                             |      |       |      |      |          |               |
| <b>Spring 2010</b> | GEOL | 100 | Survey Of Geology           | 44                  | 41                          | 0.20 | 4.40  | 132  | 660  | 1        | 40            |
|                    |      | 105 | Environmental Earth Science | 43                  | 36                          | 0.20 | 4.30  | 129  | 645  | 1        | 40            |
|                    |      | 210 | General Geology             | 43                  | 37                          | 0.37 | 9.03  | 271  | 725  | 2        | 50            |
|                    |      |     | General Geology - Honors    | 2                   | 2                           | 0.15 | 0.42  | 13   | 86   | 1        | 25            |
|                    |      |     |                             |                     |                             |      |       |      |      |          |               |
| <b>Spring 2011</b> | GEOL | 105 | Environmental Earth Science | 93                  | 82                          | 0.40 | 9.30  | 279  | 698  | 2        | 80            |
| <b>Summer 2011</b> | GEOL | 100 | Survey of Geology           | 25                  | 20                          | 0.20 | 2.67  | 80   | 400  | 1        | 55            |
| <b>Summer 2012</b> | GEOL | 100 | Survey of Geology           | 21                  | 18                          | 0.20 | 1.98  | 59   | 297  | 1        | 55            |
| <b>Summer 2013</b> | GEOL | 100 | Survey of Geology           | 38                  | 37                          | 0.20 | 4.05  | 122  | 608  | 1        | 55            |
| <b>Summer 2014</b> | GEOL | 100 | Survey of Geology           | 45                  | 32                          | 0.20 | 4.20  | 126  | 630  | 1        | 55            |
| <b>Summer 2015</b> | GEOL | 100 | Survey of Geology           | 57                  | 45                          | 0.20 | 5.22  | 157  | 783  | 1        | 55            |