

History Department Productivity: By Year and By Term 2006/07 through 2010/11

	Census Headcount	End of Term Headcount	FTEF	FTES	WSCH	Load	Sections	Max Enroll
2006/07	2,188	1,607	12.20	219.86	6,596	541	62	2,796
2007/08	2,601	1,888	13.60	262.72	7,882	580	69	3,163
2008/09	2,944	2,270	15.30	300.65	9,019	590	77	3,511
2009/10	3,611	2,861	16.50	367.02	11,011	667	84	3,869
2010/11	3,585	2,747	16.20	377.37	11,321	699	82	3,701

	Census Headcount	End of Term Headcount	FTEF	FTES	WSCH	Load	Sections	Max Enroll
Fall 2006	985	711	5.20	100.56	3,017	580	27	1,166
Fall 2007	1,069	758	5.80	109.57	3,287	567	30	1,318
Fall 2008	1,154	863	5.70	117.37	3,521	618	29	1,261
Fall 2009	1,421	1,088	6.40	142.81	4,284	669	32	1,435
Fall 2010	1,487	1,168	6.60	151.77	4,553	690	33	1,462
Spring 2007	896	646	5.40	90.03	2,701	500	27	1,270
Spring 2008	1,173	834	5.60	117.77	3,533	631	28	1,350
Spring 2009	1,253	952	6.60	129.13	3,874	587	33	1,505
Spring 2010	1,494	1,196	6.70	153.29	4,599	686	35	1,529
Spring 2011	1,543	1,153	7.60	171.18	5,135	676	38	1,709
Summer 2006	307	250	1.60	29.27	878	549	8	360
Summer 2007	359	296	2.20	35.38	1,061	482	11	495
Summer 2008	537	455	3.00	54.15	1,624	541	15	745
Summer 2009	696	577	3.40	70.91	2,127	626	17	905
Summer 2010	555	426	2.00	54.42	1,633	816	11	530

Source: SMCCCD Data Warehouse

Census Headcount: Number of duplicated headcount at final census.

End of Term Headcount: Number of duplicated headcount at the end of the term.

FTEF: Total number of full time equivalent faculty assigned.

FTES: Total number of full time equivalent students enrolled at first census.

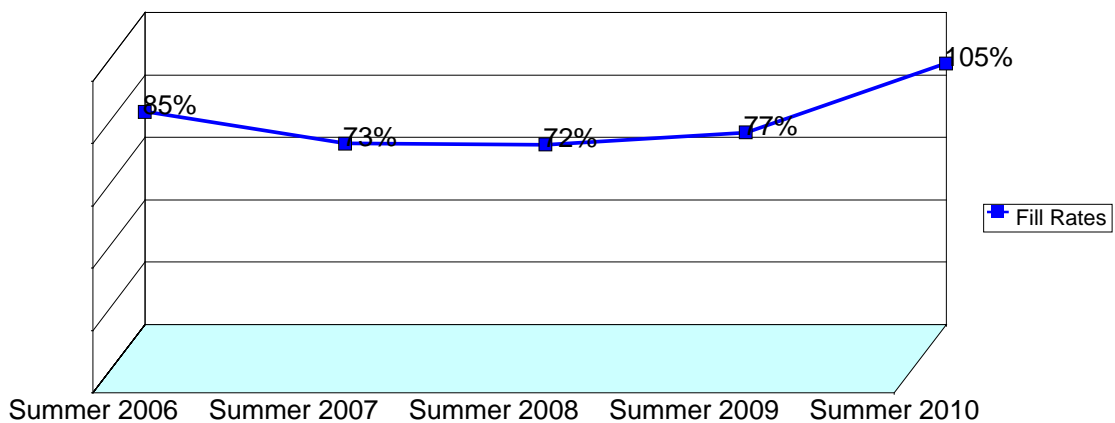
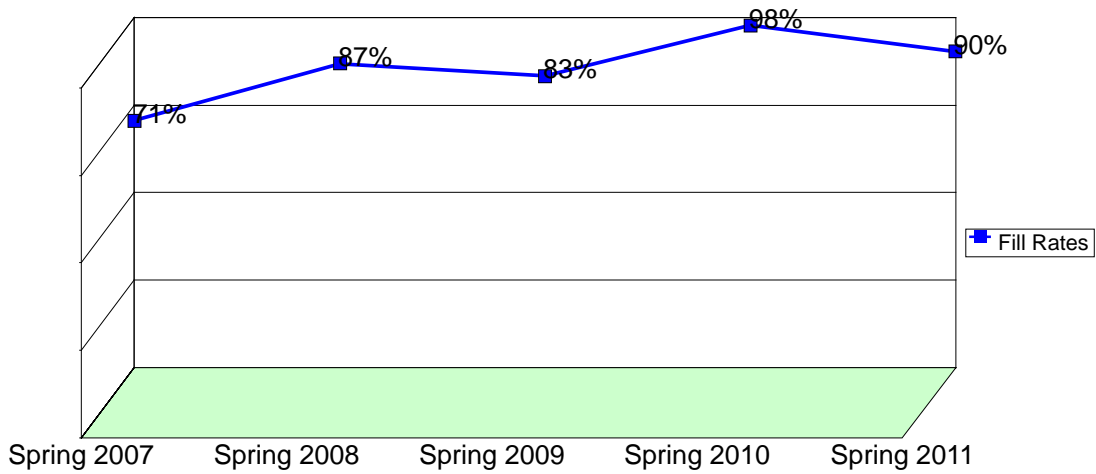
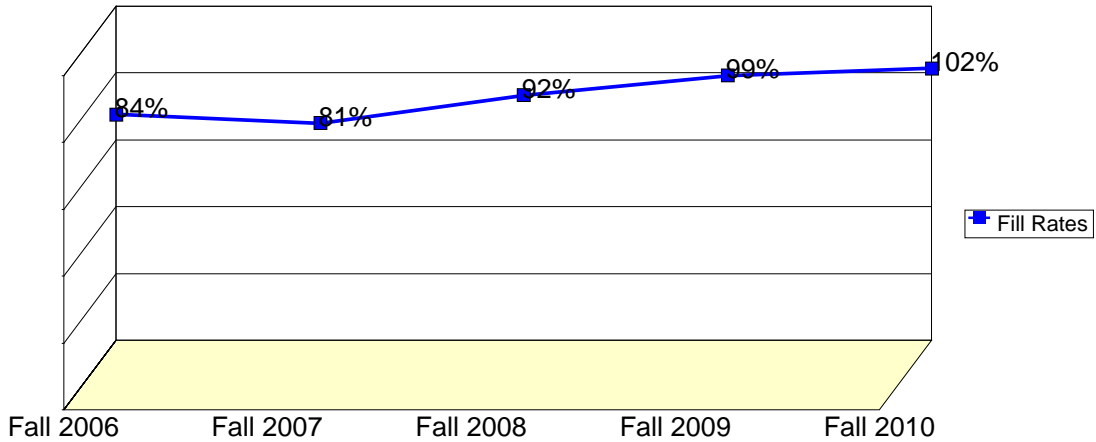
WSCH: Weekly student contact hours generated by census enrollments.

Load: The ratio of WSCH to FTEF, used to measure productivity.

Sections: Total number of sections offered per semester.

Max Enroll: The enrollment capacity or maximum enrollment as defined in curriculum.

Department Fill Rates by Term



Source: SMCCCD Data Warehouse

Fill Rates: The percent a class fills/enrolls based on capacity or enrollment maximum defined in the curriculum (does not include positive attendance or open entry/open exit classes).

Department Productivity: Term by Course

				Census	End of						Max
				Headcount	Term	FTEF	FTES	WSCH	Load	Sections	Enroll
Fall 2006	HIST	100	History Western Civ I	67	50	0.40	6.70	201	503	2	90
		101	History Western Civ II -Honors	15	13	0.20	1.50	45	225	1	28
		104	World Civilizations I	50	39	0.20	5.00	150	750	1	45
		108	Survey of American History	136	90	0.60	14.08	422	704	3	140
		201	United States History I	244	192	1.00	24.99	750	750	5	225
			United States History I-Honors	17	9	0.20	1.70	51	255	1	45
		202	United States History II	55	45	0.40	5.50	165	413	2	90
		203	The United States Since 1945	10	7	0.20	1.00	30	150	1	45
		240	Hist-Ethnic Groups of CA	40	30	0.20	4.40	132	660	1	45
			History Ethnic Groups-CA	102	68	0.40	10.60	318	795	2	90
			History of Ethnic Groups in CA	36	24	0.20	3.60	108	540	1	45
		310	California History	144	97	0.80	14.59	438	547	4	185
		420	Survey of Latin American Hist.	25	18	0.20	2.50	75	375	1	45
		435	History of the Philippines	43	28	0.20	4.30	129	645	1	45
		690	Special Projects	1	1	0.00	0.10	3	#INF	1	3
Fall 2007	HIST	100	History Western Civ I	69	48	0.40	6.90	207	518	2	90
		104	World Civilizations I	43	30	0.20	4.30	129	645	1	45
		108	Survey of American History	132	86	0.60	13.58	407	679	3	140
		109	History of Europe Since 1945	17	8	0.20	1.70	51	255	1	45
		201	United States History I	263	189	1.20	26.80	804	670	6	270
		202	United States History II	54	37	0.40	5.40	162	405	2	90
		203	The United States Since 1945	17	11	0.20	1.70	51	255	1	45
		240	Hist-Ethnic Groups of CA	48	30	0.20	5.28	158	792	1	45
			History Ethnic Groups-CA	108	78	0.40	11.29	339	847	2	90
			History of Ethnic Groups in CA	43	28	0.20	4.30	129	645	1	45
		300	History of San Francisco	33	27	0.20	3.63	109	545	1	45
		310	California History	164	134	0.80	16.89	507	633	4	185
		420	Survey of Latin American Hist.	20	7	0.20	2.00	60	300	1	45
		432	Modern Asian Civilizations	6	5	0.20	0.60	18	90	1	45
		435	History of the Philippines	39	34	0.20	3.90	117	585	1	45
		461	Great Cities of the World I	13	6	0.20	1.30	39	195	1	45
		690	Special Projects	0	0	0.00				1	3
Fall 2008	HIST	100	History Western Civ I	82	61	0.40	8.20	246	615	2	90
		101	History Western Civ II -Honors	23	17	0.20	2.30	69	345	1	28
		104	World Civilizations I	36	28	0.20	3.60	108	540	1	45
		108	Survey of American History	122	78	0.60	12.65	380	633	3	140
		109	History of Europe Since 1945	19	17	0.20	1.90	57	285	1	45
		201	United States History I	292	201	1.20	29.59	888	740	6	270
		202	United States History II	37	32	0.20	3.70	111	555	1	45
		203	The United States Since 1945	26	23	0.20	2.60	78	390	1	45
		240	Hist-Ethnic Groups of CA	40	25	0.20	4.40	132	660	1	45
			History Ethnic Groups-CA	77	62	0.40	8.04	241	603	2	90
			History of Ethnic Groups in CA	47	23	0.20	4.70	141	705	1	45
		300	History of San Francisco	39	36	0.20	4.29	129	644	1	45
		310	California History	140	113	0.60	14.00	420	700	3	140
			California History-Honors	34	29	0.20	3.40	102	510	1	30
		335	History/Politics - Middle East	22	19	0.10	2.20	66	660	1	45

			Census Headcount	End of Term Headcount	FTEF	FTES	WSCH	Load	Sections	Max Enroll
		420	35	25	0.20	3.50	105	525	1	45
		430	38	35	0.20	3.80	114	570	1	45
		435	45	39	0.20	4.50	135	675	1	45
Fall 2009	HIST	100	86	70	0.40	9.25	278	694	2	90
		104	54	39	0.20	5.40	162	810	1	45
		108	125	88	0.60	13.08	393	654	3	140
		201	313	239	1.20	30.52	916	763	6	270
			25	20	0.20	2.92	88	438	1	30
		202	121	91	0.60	12.58	378	629	3	135
			19	17	0.20	1.90	57	285	1	45
		203	30	27	0.20	3.00	90	450	1	45
		235	39	30	0.20	3.90	117	585	1	45
		240	42	29	0.20	4.90	147	735	1	45
			79	62	0.40	8.26	248	620	2	90
			56	45	0.20	5.60	168	840	1	45
		300	44	39	0.20	4.40	132	660	1	45
		310	216	161	0.80	19.90	597	746	4	185
		420	43	32	0.20	4.30	129	645	1	45
		430	50	38	0.20	5.00	150	750	1	45
		435	41	33	0.20	4.10	123	615	1	45
		680	38	28	0.20	3.80	114	570	1	45
Fall 2010	HIST	100	89	71	0.40	9.29	279	697	2	90
		104	44	37	0.20	4.40	132	660	1	45
		108	123	87	0.40	13.03	391	978	2	90
		109	44	36	0.20	4.40	132	660	1	45
		201	309	234	1.40	31.33	940	671	7	315
		202	133	111	0.60	13.71	411	686	3	135
			16	15	0.20	1.60	48	240	1	32
		203	54	50	0.20	5.40	162	810	1	45
		235	36	23	0.20	3.60	108	540	1	45
		240	38	31	0.20	4.18	125	627	1	45
			96	85	0.40	10.03	301	752	2	90
			54	38	0.20	5.40	162	810	1	45
		300	46	36	0.20	4.60	138	690	1	45
		310	237	170	1.00	24.00	720	720	5	215
		420	47	44	0.20	4.70	141	705	1	45
		430	54	43	0.20	5.40	162	810	1	45
		435	41	35	0.20	4.10	123	615	1	45
		453	26	22	0.20	2.60	78	390	1	45
Spring 2007	HIST	100	62	39	0.40	6.20	186	465	2	90
			17	15	0.20	1.70	51	255	1	45
		101	10	8	0.20	1.00	30	150	1	45
		106	17	16	0.20	1.70	51	255	1	45
		108	79	41	0.40	7.90	237	593	2	125
		201	171	119	0.80	17.10	513	641	4	180
		202	107	87	0.60	10.70	321	535	3	135
		235	43	35	0.20	4.30	129	645	1	45
		240	30	26	0.20	3.00	90	450	1	45

			Census	End of									
			Headcount	Term	FTEF	FTES	WSCH	Load	Sections	Max			
				Headcount						Enroll			
			Hist-Ethnic Groups inCA-Honors	16	14	0.20	1.60	48	240	1	30		
			History of Ethnic Groups in CA	128	87	0.60	13.23	397	662	3	135		
	244		African American History	21	18	0.20	2.10	63	315	1	45		
	310		California History	152	108	0.80	15.20	456	570	4	215		
	420		Survey of Latin American Hist.	18	11	0.20	1.80	54	270	1	45		
	430		Early Asian Civilizations	25	22	0.20	2.50	75	375	1	45		
Spring 2008	HIST	100	History Western Civ I	64	40	0.40	6.40	192	480	2	90		
		106	World Civilizations II	26	11	0.20	2.60	78	390	1	45		
		108	American History Survey	99	63	0.40	9.90	297	743	2	125		
			Survey of American History	29	21	0.20	2.90	87	435	1	45		
		201	United States History I	205	141	0.80	20.50	615	769	4	180		
			United States History I-Honors	17	16	0.20	1.70	51	255	1	30		
		202	United States History II	153	129	0.80	15.30	459	574	4	180		
		235	History of Ethnic Groups in US	79	44	0.20	7.90	237	1,185	1	80		
		240	History of Ethnic Groups in CA	164	110	0.80	16.87	506	633	4	180		
		244	African American History	42	37	0.20	4.20	126	630	1	45		
		300	History of San Francisco	40	36	0.20	4.00	120	600	1	45		
		310	California History	200	146	0.80	20.00	600	750	4	215		
		420	Survey of Latin American Hist.	24	17	0.20	2.40	72	360	1	45		
		430	Early Asian Civilizations	31	23	0.20	3.10	93	465	1	45		
		Spring 2009	HIST	100	History Western Civ I	73	49	0.40	7.30	219	548	2	90
				101	History Western Civ II	19	16	0.20	2.03	61	304	1	45
				106	World Civilizations II	33	27	0.20	3.30	99	495	1	45
108	American History Survey			82	58	0.40	8.20	246	615	2	90		
	Survey of American History			25	20	0.20	2.50	75	375	1	45		
201	United States History I			312	221	1.40	33.23	997	712	7	350		
202	United States History II			161	135	0.80	16.62	499	623	4	180		
235	History of Ethnic Groups in US			37	33	0.20	3.70	111	555	1	45		
240	Hist-Ethnic Groups inCA-Honors			15	14	0.20	1.60	48	240	1	30		
	History of Ethnic Groups in CA			183	137	0.80	19.36	581	726	4	180		
244	African American History			49	35	0.20	4.90	147	735	1	45		
310	California History			169	131	0.80	16.90	507	634	4	180		
420	Survey of Latin American Hist.			23	15	0.20	2.30	69	345	1	45		
432	Modern Asian Civilizations			29	23	0.20	2.90	87	435	1	45		
435	History of the Philippines			17	15	0.20	1.70	51	255	1	45		
463	Great Cities of the World III			26	23	0.20	2.60	78	390	1	45		
Spring 2010	HIST			100	History Western Civ I	81	59	0.40	8.10	243	608	2	90
		101	History Western Civ II	39	31	0.20	4.16	125	624	1	45		
		106	World Civilizations II	48	44	0.20	4.80	144	720	1	45		
		108	American History Survey	87	68	0.40	8.70	261	653	2	90		
			Survey of American History	38	22	0.20	4.43	133	665	1	45		
		201	United States History I	343	283	1.40	34.91	1,047	748	7	350		
		202	United States History II	149	115	0.80	15.22	457	571	4	180		
		240	Hist-Ethnic Groups inCA-Honors	27	22	0.20	2.88	86	432	1	30		
			History of Ethnic Groups in CA	196	159	0.80	20.93	628	785	4	180		
		244	African American History	56	48	0.20	5.60	168	840	1	45		

			Census Headcount	End of Term Headcount	FTEF	FTES	WSCH	Load	Sections	Max Enroll	
		300	History of San Francisco	50	43	0.20	5.00	150	750	1	45
		310	California History	225	177	1.00	23.06	692	692	5	225
		335	History/Politics - Middle East	35	32	0.10	3.50	105	1,050	1	45
		420	Survey of Latin American Hist.	36	25	0.20	3.60	108	540	1	45
		432	Modern Asian Civilizations	51	40	0.20	5.10	153	765	1	45
		444	Survey-SubSaharan African HIST	32	28	0.20	3.20	96	480	1	45
		690	Special Projects	1	0	0.00	0.10	3	#INF	1	1
Spring 2011	HIST	100	History Western Civ I	86	65	0.40	8.60	258	645	2	90
		101	History Western Civ II	23	15	0.20	2.45	74	368	1	45
		106	World Civilizations II	22	18	0.20	2.20	66	330	1	24
		108	American History Survey	106	75	0.40	10.60	318	795	2	90
			Survey of American History	44	34	0.20	5.13	154	770	1	45
		201	United States History I	350	257	1.40	42.30	1,269	906	7	350
		202	United States History II	155	124	1.00	15.39	462	462	5	225
		235	Hist of Ethnic Grps US-Honors	10	6	0.20	1.00	30	150	1	45
		240	Hist-Ethnic Groups in CA-Honor	28	14	0.20	2.80	84	420	1	30
			History of Ethnic Groups in CA	178	132	0.80	17.80	534	668	4	180
		244	African American History	42	29	0.20	4.20	126	630	1	45
		248	Women&The American Experience	12	9	0.20	1.20	36	180	1	45
		300	History of San Francisco	42	36	0.20	4.20	126	630	1	45
		310	California History	270	210	1.00	35.80	1,074	1,074	5	225
		420	Survey of Latin American Hist.	31	19	0.20	3.10	93	465	1	45
		432	Modern Asian Civilizations	44	33	0.20	4.40	132	660	1	45
		436	Filipinos in America-Kababayan	41	37	0.20	4.10	123	615	1	45
		444	Survey-SubSaharan African HIST	29	23	0.20	2.90	87	435	1	45
		680	The Holocaust	30	17	0.20	3.00	90	450	1	45
Summer 2006	HIST	108	Survey of American History	32	28	0.20	3.01	90	452	1	45
		201	United States History I	77	56	0.40	7.13	214	535	2	90
		202	United States History II	42	38	0.20	4.00	120	600	1	45
		240	History of Ethnic Groups in CA	80	62	0.40	7.86	236	590	2	90
		310	California History	76	66	0.40	7.26	218	545	2	90
Summer 2007	HIST	100	History Western Civ I	44	37	0.40	4.31	129	323	2	90
		108	Survey of American History	26	26	0.20	2.45	74	368	1	45
		201	United States History I	96	80	0.40	9.70	291	728	2	90
		202	United States History II	29	26	0.20	2.87	86	431	1	45
		240	History of Ethnic Groups in CA	89	69	0.40	8.50	255	637	2	90
		248	Women&The American Experience	13	9	0.20	1.29	39	193	1	45
310	California History	62	49	0.40	6.26	188	470	2	90		
Summer 2008	HIST	100	History Western Civ I	61	53	0.40	6.09	183	456	2	90
		108	Survey of American History	22	20	0.20	2.31	69	347	1	45
		201	United States History I	203	160	0.80	20.94	628	785	4	250
		202	United States History II	73	67	0.60	7.02	210	351	3	135
		240	History of Ethnic Groups in CA	105	86	0.60	10.10	303	505	3	135
310	California History	73	69	0.40	7.69	231	577	2	90		
Summer 2009	HIST	100	History Western Civ I	41	39	0.20	4.22	127	633	1	45
		201	United States History I	260	206	1.00	26.29	789	789	5	330
		202	United States History II	77	71	0.60	7.87	236	394	3	135
		240	History of Ethnic Groups in CA	129	113	0.60	13.27	398	663	3	135

			Census Headcount	End of Term Headcount	FTEF	FTES	WSCH	Load	Sections	Max Enroll	
		300	History of San Francisco	23	23	0.20	2.37	71	355	1	45
		310	California History	166	125	0.80	16.90	507	634	4	215
Summer 2010	HIST	100	History Western Civ I	36	26	0.20	3.63	109	544	1	45
		201	United States History I	187	137	0.40	18.50	555	1,387	3	170
		202	United States History II	84	70	0.40	8.20	246	615	2	90
		240	History of Ethnic Groups in CA	96	77	0.40	9.23	277	693	2	90
		310	California History	152	116	0.60	14.86	446	743	3	135