

History Department Student Characteristics 2006/07 through 2010/11

Unique Headcount by Term

FA06	FA07	FA08	FA09	FA10	SP07	SP08	SP09	SP10	SP11	SU06	SU07	SU08	SU09	SU10
940	1,020	1,077	1,344	1,388	848	1,108	1,178	1,398	1,446	287	345	511	661	533

Unique Headcount by Gender

	2006/07		2007/08		2008/09		2009/10		2010/11		Change 09/10-10/11	5 Year Row Total & Average	
Female	891	49%	1,034	47%	1,153	47%	1,420	48%	1,426	48%	0%	5,924	48%
Male	873	49%	1,058	52%	1,199	51%	1,421	50%	1,404	50%	-1%	5,955	50%
Unreported	27	2%	28	1%	45	2%	48	2%	47	2%	-2%	195	2%
Column Total	1,791	100%	2,120	100%	2,397	100%	2,889	100%	2,877	100%	-0%	12,074	100%

Unique Headcount by Ethnicity

	2006/07		2007/08		2008/09		2009/10		2010/11		Change 09/10-10/11	5 Year Row Total & Average	
African American	62	4%	93	4%	106	5%	132	5%	140	5%	6%	533	5%
Asian	436	25%	516	24%	509	22%	593	21%	605	20%	2%	2,659	22%
Filipino	369	20%	447	21%	549	22%	560	19%	575	21%	3%	2,500	21%
Hispanic	349	19%	431	21%	480	19%	541	17%	539	18%	-0%	2,340	19%
White	402	21%	435	20%	486	21%	633	22%	549	19%	-13%	2,505	20%
Other	51	3%	40	2%	16	1%	7	0%	3	0%	-57%	117	1%
Unknown	122	7%	166	8%	251	11%	425	16%	466	16%	10%	1,430	13%
Column Total	1,791	100%	2,128	100%	2,397	100%	2,891	100%	2,877	100%	-0%	12,084	100%

Unique Headcount by Age

	2006/07		2007/08		2008/09		2009/10		2010/11		Change 09/10-10/11	5 Year Row Total & Average	
Under 18	39	2%	46	3%	63	3%	72	3%	41	1%	-43%	261	2%
Age 18-22	1,221	72%	1,388	72%	1,616	75%	1,929	75%	1,956	76%	1%	8,110	74%
Age 23-28	341	18%	448	18%	492	16%	550	14%	556	15%	1%	2,387	16%
Age 29-39	129	6%	161	5%	153	4%	242	6%	218	6%	-10%	903	5%
Age 40-49	45	1%	71	2%	51	1%	79	1%	85	1%	8%	331	1%
Age 50-59	20	1%	23	1%	34	1%	35	1%	30	0%	-14%	142	1%
Age 60+	5	0%	3	0%	6	0%	12	0%	10	0%	-17%	36	0%
Column Total	1,800	100%	2,140	100%	2,415	100%	2,919	100%	2,896	100%	-1%	12,170	100%

Source: SMCCCD Data Warehouse

*Note: Counts and percents are based on census figures.

**Note: The variations in total numbers each year within the demographic segments are due to missing data points, and, in the case of age, also due to students crossing a category threshold during a year (18-22 in Fall, 23-28 in Spring).

Unique Headcount by Status

	2006/07		2007/08		2008/09		2009/10		2010/11		Change 09/10-10/11	5 Year Row Total & Average	
Continuing	1,375	76%	1,638	73%	1,803	72%	2,179	74%	2,238	78%	3%	9,233	75%
Currently K-12	20	1%	27	2%	44	2%	54	2%	24	1%	-56%	169	2%
First-Time	150	8%	130	9%	177	9%	221	8%	210	7%	-5%	888	8%
First-Time Transfer	97	5%	137	9%	174	8%	226	8%	221	8%	-2%	855	8%
Returning	121	6%	151	5%	176	5%	186	5%	171	5%	-8%	805	5%
Returning Transfer	85	4%	98	3%	104	3%	132	3%	103	2%	-22%	522	3%
Column Total	1,848	100%	2,181	100%	2,478	100%	2,998	100%	2,967	100%	-1%	12,472	100%

Unique Headcount by Course-Taking Pattern (Fall and Spring only)

	2006/07		2007/08		2008/09		2009/10		2010/11		Change 09/10-10/11	5 Year Row Total & Average	
Day	1,345	75%	1,579	77%	1,788	77%	2,036	72%	1,955	70%	-4%	8,703	74%
Day and Evening	23	1%	19	1%	24	1%	35	1%	35	1%	0%	136	1%
Evening	488	24%	571	22%	662	22%	947	27%	1,000	29%	6%	3,668	26%
Column Total	1,856	100%	2,169	100%	2,474	100%	3,018	100%	2,990	100%	-1%	12,507	100%

Unique Headcount by Educational Goal

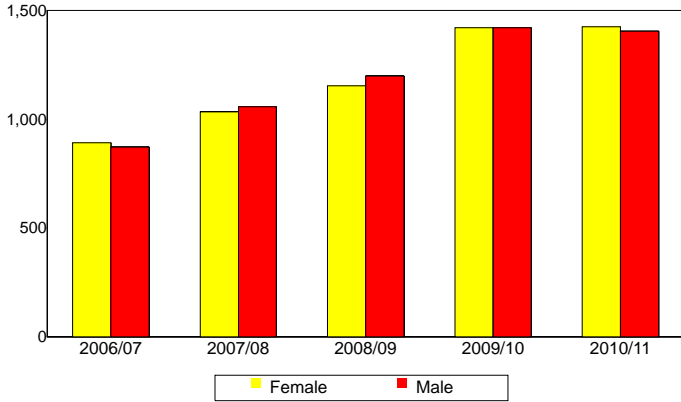
	2006/07		2007/08		2008/09		2009/10		2010/11		Change 09/10-10/11	5 Year Row Total & Average	
Transfer	1,472	83%	1,364	64%	1,466	62%	1,814	64%	1,895	67%	4%	3,011	66%
AA/AS w/o Transfer	87	4%	84	3%	118	4%	168	5%	180	6%	7%	337	5%
Certificate w/o Transfer	12	1%	14	1%	20	1%	34	1%	32	1%	-6%	112	1%
Acquire/Update Job Skills	32	2%	36	2%	45	2%	68	2%	69	2%	1%	250	2%
Complete HS Credits	9	1%	17	1%	42	2%	42	2%	18	1%	-57%	128	1%
Educational Development	53	3%	36	2%	61	3%	51	1%	65	2%	27%	266	2%
Formulate Career Plans/G	1	0%	9	0%	14	1%	15	1%	29	1%	93%	38	1%
Improve Basic Skills	1	0%	3	0%	3	0%	13	0%	11	0%	-15%	31	0%
Maintain Certificate/Licens					6	0%	9	0%	8	0%	-11%	23	0%
Undecided/Unreported	144	8%	607	28%	642	25%	718	24%	606	20%	-16%	2,717	22%
Column Total	1,811	100%	2,170	100%	2,417	100%	2,932	100%	2,913	100%	-1%	12,243	100%

Source: SMCCCD Data Warehouse

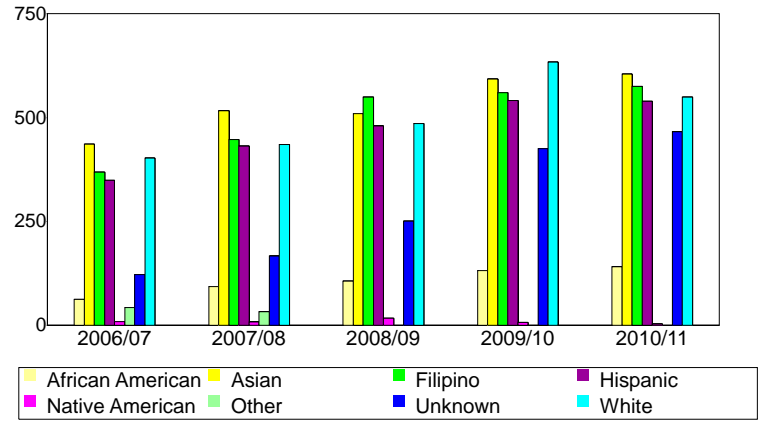
*Note: Counts and percents are based on census figures for summer, fall and spring.

**Note: The variations in total numbers each year within the Status, Course-Taking, and Educational Goal tables are due to missing data points and also due to students changing Status, Pattern, or Educational Goal within a given year - e.g. "First Time Student" in Fall and "Continuing Student" in Spring.

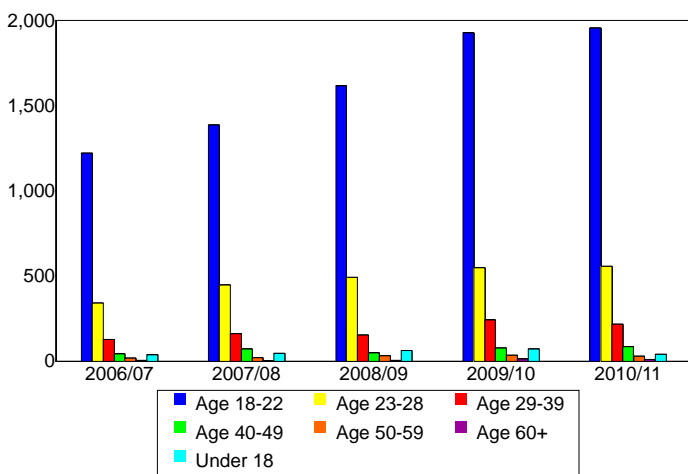
Unique Headcount by Gender



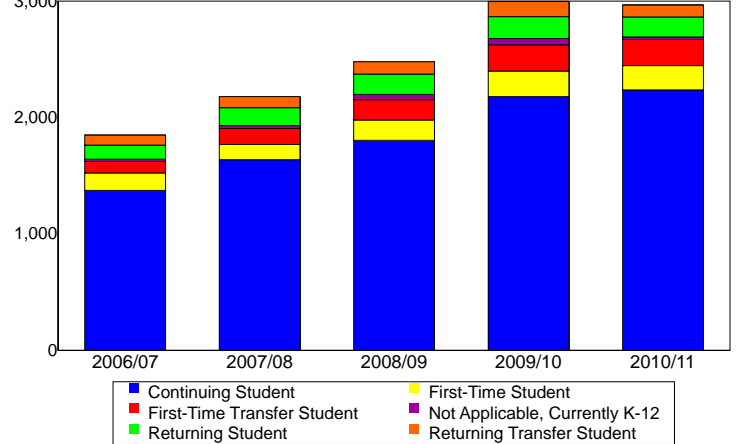
Unique Headcount by Ethnicity



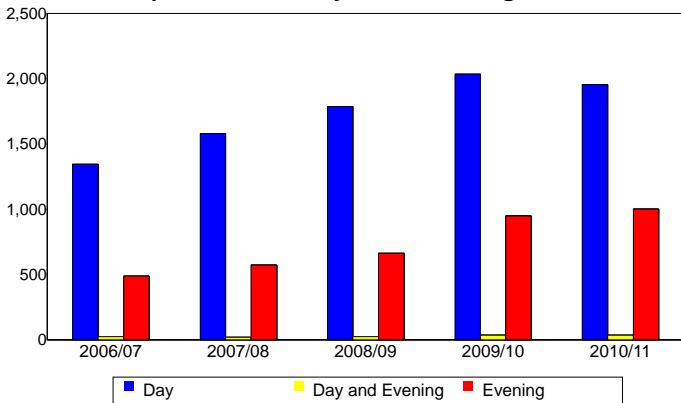
Unique Headcount by Student Age



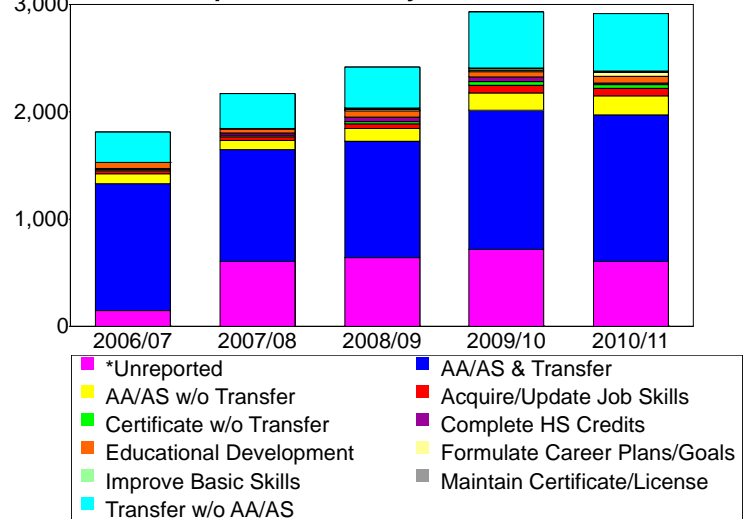
Unique Headcount by Enrollment Status



Unique Headcount by Course-Taking Pattern



Unique Headcount by Educational Goal



Source: SMCCCD Data Warehouse