

Philosophy Department Productivity: By Year and By Term 2006/07 through 2010/11

	Census Headcount	End of Term Headcount	FTEF	FTES	WSCH	Load	Sections	Max Enroll
2006/07	654	495	4.40	72.84	2,185	497	22	975
2007/08	710	552	4.60	78.15	2,344	510	23	1,020
2008/09	911	690	4.70	102.10	3,063	652	24	1,058
2009/10	978	795	4.50	110.54	3,316	737	24	1,038
2010/11	928	759	4.10	102.37	3,071	749	22	944

	Census Headcount	End of Term Headcount	FTEF	FTES	WSCH	Load	Sections	Max Enroll
Fall 2006	228	158	1.40	26.39	792	566	7	300
Fall 2007	285	215	1.60	31.62	949	593	8	360
Fall 2008	339	255	1.70	38.12	1,144	673	9	398
Fall 2009	367	289	1.50	41.82	1,255	836	9	363
Fall 2010	358	288	1.60	42.13	1,264	790	8	360
Spring 2007	275	217	2.00	29.92	898	449	10	450
Spring 2008	279	207	1.80	30.89	927	515	9	390
Spring 2009	354	255	1.80	38.96	1,169	649	9	390
Spring 2010	377	302	1.80	42.61	1,278	710	9	405
Spring 2011	385	326	1.70	41.26	1,238	728	10	403
Summer 2006	151	120	1.00	16.52	496	496	5	225
Summer 2007	146	130	1.20	15.63	469	391	6	270
Summer 2008	218	180	1.20	25.02	751	626	6	270
Summer 2009	234	204	1.20	26.11	783	653	6	270
Summer 2010	185	145	0.80	18.98	569	712	4	181

Source: SMCCCD Data Warehouse

Census Headcount: Number of duplicated headcount at final census.

End of Term Headcount: Number of duplicated headcount at the end of the term.

FTEF: Total number of full time equivalent faculty assigned.

FTES: Total number of full time equivalent students enrolled at first census.

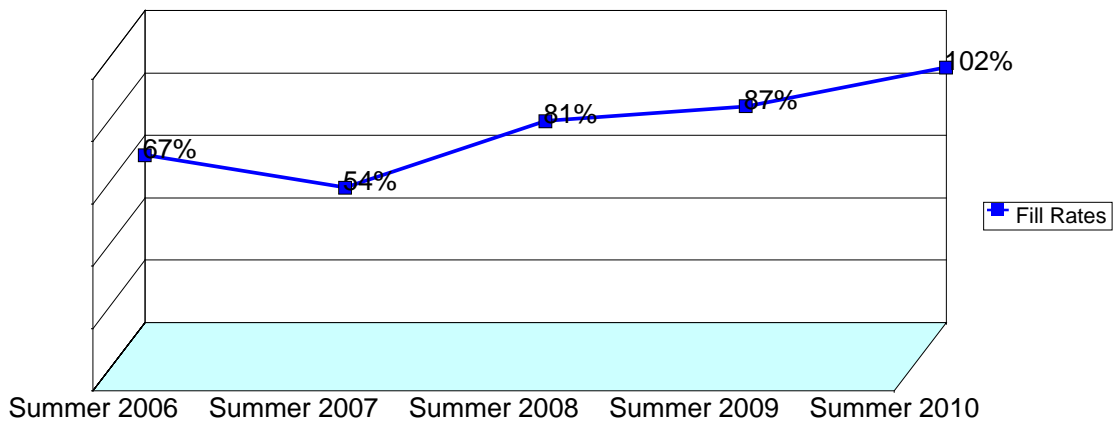
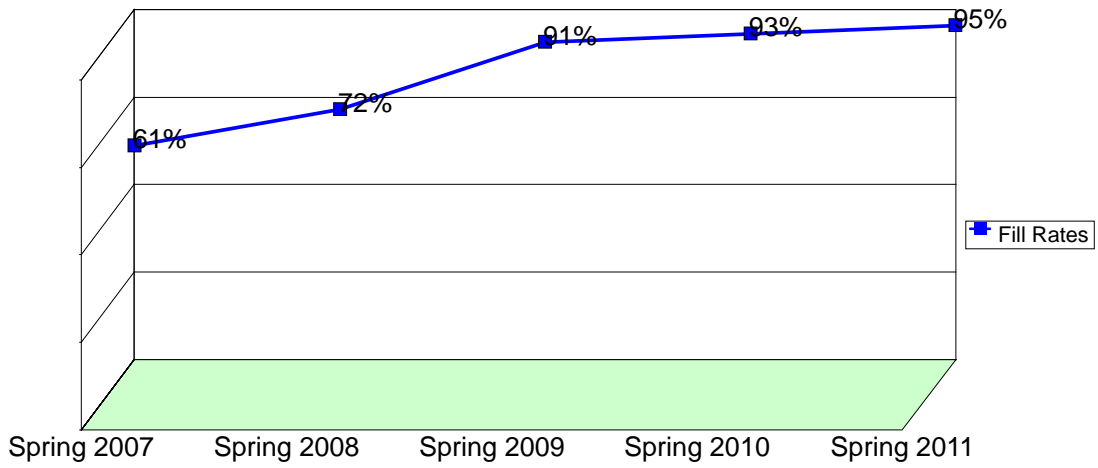
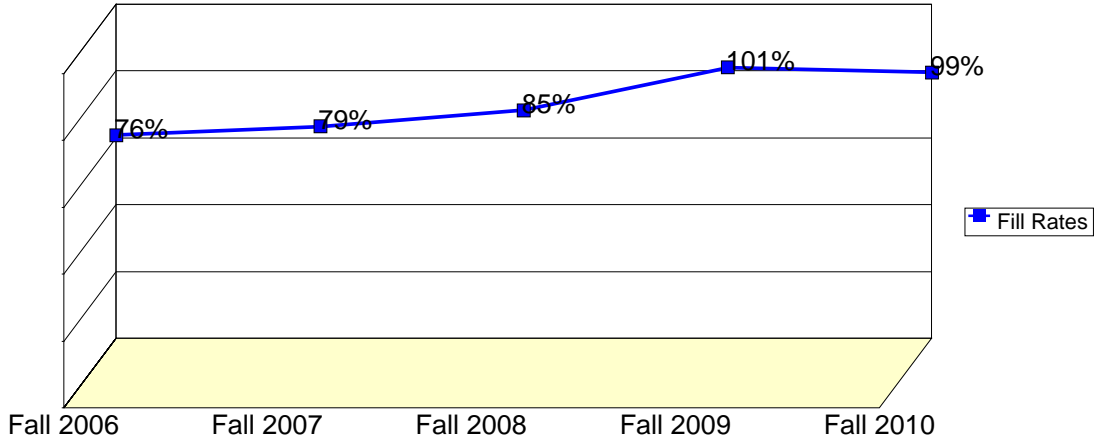
WSCH: Weekly student contact hours generated by census enrollments.

Load: The ratio of WSCH to FTEF, used to measure productivity.

Sections: Total number of sections offered per semester.

Max Enroll: The enrollment capacity or maximum enrollment as defined in curriculum.

Department Fill Rates by Term



Source: SMCCCD Data Warehouse

Fill Rates: The percent a class fills/enrolls based on capacity or enrollment maximum defined in the curriculum (does not include positive attendance or open entry/open exit classes).

Department Productivity: Term by Course

			Census	End of	FTEF	FTES	WSCH	Load	Sections	Max	
			Headcount	Term						Enroll	
Fall 2006	PHIL	100	Intro to Philosophy-Honors	24	16	0.20	2.40	72	360	1	30
			Introduction to Philosophy	77	57	0.40	8.13	244	610	2	90
		103	Critical Thinking	102	69	0.60	13.36	401	668	3	135
		240	Introduction to Ethics	25	16	0.20	2.50	75	375	1	45
Fall 2007	PHIL	100	Introduction to Philosophy	88	64	0.40	9.31	279	698	2	90
		103	Critical Thinking	114	88	0.60	14.01	420	701	3	135
		160	History/Philosophy-Anc/Medievl	29	21	0.20	2.90	87	435	1	45
		240	Introduction to Ethics	22	17	0.20	2.20	66	330	1	45
		300	Intro to World Religions	32	25	0.20	3.20	96	480	1	45
Fall 2008	PHIL	100	Introduction to Philosophy	119	95	0.40	12.63	379	948	2	125
		103	Critical Thinking	140	102	0.60	17.49	525	874	3	135
		175	Hist Of Phil 16-18th Century	16	11	0.20	1.60	48	240	1	45
		240	Introduction to Ethics	26	22	0.20	2.60	78	390	1	45
		280	Intro to Political Philosophy	12	6	0.10	1.20	36	360	1	35
		300	Intro: World Religions-Honors	26	19	0.20	2.60	78	390	1	30
Fall 2009	PHIL	100	Introduction to Philosophy	152	120	0.60	16.02	481	801	3	135
		103	Critical Thinking	136	107	0.60	17.90	537	895	3	135
		240	Introduction to Ethics	40	31	0.20	4.00	120	600	1	45
		280	Intro to Political PHIL-Honors	15	10	0.10	1.50	45	450	1	35
		300	Intro: World Religions-Honors	24	21	0.00	2.40	72	#INF	1	30
Fall 2010	PHIL	100	Introduction to Philosophy	140	113	0.60	14.80	444	740	3	135
		103	Critical Thinking	129	104	0.60	18.43	553	922	3	135
		160	History/Philosophy-Anc/Medievl	45	38	0.20	4.50	135	675	1	45
		240	Introduction to Ethics	44	33	0.20	4.40	132	660	1	45
Spring 2007	PHIL	100	Intro To Philosophy	43	40	0.20	4.30	129	645	1	45
			Introduction to Philosophy	58	36	0.40	6.09	183	457	2	90
		103	Critical Thinking	64	49	0.40	8.53	256	640	2	90
		200	Introduction To Logic	17	16	0.20	1.70	51	255	1	45
		240	Introduction to Ethics-Honors	16	12	0.20	1.60	48	240	1	45
		300	Intro to World Religions	62	52	0.40	6.20	186	465	2	90
		320	Asian Philosophy	15	12	0.20	1.50	45	225	1	45
Spring 2008	PHIL	100	Intro To Philosophy	44	31	0.20	4.40	132	660	1	45
			Introduction to Philosophy	79	60	0.40	8.26	248	620	2	90
		103	Critical Thinking	73	60	0.40	9.93	298	745	2	90
		200	Introduction To Logic	15	9	0.20	1.50	45	225	1	45
		240	Introduction to Ethics	39	26	0.20	3.90	117	585	1	45
			Introduction to Ethics-Honors	14	11	0.20	1.40	42	210	1	30
Spring 2009	PHIL	100	Intro To Philosophy	41	30	0.20	4.10	123	615	1	45
			Introduction to Philosophy	88	65	0.40	8.80	264	660	2	90
		103	Critical Thinking	86	64	0.40	12.16	365	912	2	90
		200	Introduction To Logic	28	18	0.20	2.80	84	420	1	45
		240	Introduction to Ethics-Honors	34	27	0.20	3.40	102	510	1	30
		300	Intro to World Religions	43	25	0.20	4.30	129	645	1	45
		312	Intro to PhilosophyofReligion	34	26	0.20	3.40	102	510	1	45
Spring 2010	PHIL	100	Intro To Philosophy	43	29	0.20	4.30	129	645	1	45
			Introduction to Philosophy	83	63	0.40	8.67	260	650	2	90

				Census Headcount	End of Term Headcount	FTEF	FTES	WSCH	Load	Sections	Max Enroll	
		103	Critical Thinking	79	69	0.40	11.73	352	880	2	90	
		200	Introduction To Logic	37	28	0.20	3.70	111	555	1	45	
		240	Introduction to Ethics	46	42	0.20	4.60	138	690	1	45	
		300	Intro to World Religions	43	37	0.20	5.02	151	753	1	45	
		312	Intro to PhilosophyofReligion	46	34	0.20	4.60	138	690	1	45	
Spring 2011	PHIL	100	Intro To Philosophy	51	44	0.20	5.10	153	765	1	45	
			Introduction to Philosophy	94	83	0.40	9.40	282	705	2	90	
		103	Critical Thinking	92	74	0.40	11.38	341	854	2	90	
		240	Introduction to Ethics	45	38	0.20	4.50	135	675	1	45	
		280	Intro to Political Philosophy	17	11	0.10	1.70	51	510	1	45	
		300	Intro to World Religions	35	32	0.20	4.08	123	613	1	45	
		312	Intro Phil of Religion-Honors	15	12	0.00	1.50	45	#INF	1	32	
		320	Asian Philosophy	36	32	0.20	3.60	108	540	1	45	
	Summer 2006	PHIL	100	Introduction to Philosophy	83	62	0.40	8.28	248	621	2	90
			103	Critical Thinking	54	47	0.40	6.92	208	519	2	90
240			Introduction to Ethics	14	11	0.20	1.32	40	198	1	45	
Summer 2007	PHIL	100	Introduction to Philosophy	72	64	0.60	6.88	207	344	3	135	
		103	Critical Thinking	47	42	0.40	6.21	186	466	2	90	
		240	Introduction to Ethics	27	24	0.20	2.54	76	381	1	45	
Summer 2008	PHIL	100	Introduction to Philosophy	109	87	0.60	11.14	334	557	3	135	
		103	Critical Thinking	81	69	0.40	11.11	333	833	2	90	
		240	Introduction to Ethics	28	24	0.20	2.77	83	416	1	45	
Summer 2009	PHIL	100	Introduction to Philosophy	133	118	0.60	13.23	397	662	3	135	
		103	Critical Thinking	101	86	0.60	12.88	386	644	3	135	
Summer 2010	PHIL	100	Introduction to Philosophy	100	83	0.40	9.58	287	719	2	91	
		103	Critical Thinking	38	23	0.20	4.66	140	699	1	45	
		240	Introduction to Ethics	47	39	0.20	4.74	142	710	1	45	