

Philosophy Department Student Characteristics 2006/07 through 2010/11

Unique Headcount by Term

FA06	FA07	FA08	FA09	FA10	SP07	SP08	SP09	SP10	SP11	SU06	SU07	SU08	SU09	SU10
227	280	328	360	344	264	268	346	367	369	150	144	210	218	172

Unique Headcount by Gender

	2006/07		2007/08		2008/09		2009/10		2010/11		Change 09/10-10/11	5 Year Row Total & Average	
Female	276	45%	316	45%	414	49%	451	49%	411	49%	-9%	1,868	48%
Male	317	53%	322	52%	404	50%	427	48%	424	50%	-1%	1,894	50%
Unreported	14	2%	18	3%	15	2%	21	2%	11	1%	-48%	79	2%
Column Total	607	100%	656	100%	833	100%	899	100%	846	100%	-6%	3,841	100%

Unique Headcount by Ethnicity

	2006/07		2007/08		2008/09		2009/10		2010/11		Change 09/10-10/11	5 Year Row Total & Average	
African American	24	4%	17	2%	28	3%	31	3%	23	3%	-26%	123	3%
Asian	171	28%	191	28%	229	27%	222	25%	208	25%	-6%	1,021	26%
Filipino	94	15%	126	20%	175	21%	178	20%	181	22%	2%	754	20%
Hispanic	103	16%	104	15%	134	16%	137	14%	123	13%	-10%	601	15%
White	142	24%	139	22%	186	22%	189	21%	158	19%	-16%	814	21%
Other	18	3%	15	2%	3	0%						36	1%
Unknown	55	10%	66	10%	78	10%	143	16%	153	18%	7%	495	14%
Column Total	607	100%	658	100%	833	100%	900	100%	846	100%	-6%	3,844	100%

Unique Headcount by Age

	2006/07		2007/08		2008/09		2009/10		2010/11		Change 09/10-10/11	5 Year Row Total & Average	
Under 18	23	4%	26	5%	20	3%	27	4%	10	1%	-63%	106	3%
Age 18-22	419	70%	461	74%	575	75%	616	75%	591	77%	-4%	2,662	75%
Age 23-28	103	17%	121	17%	169	17%	167	15%	156	15%	-7%	716	16%
Age 29-39	45	6%	26	3%	41	3%	66	5%	57	4%	-14%	235	4%
Age 40-49	15	2%	16	1%	16	1%	17	1%	23	1%	35%	87	1%
Age 50-59	1	0%	3	0%	10	0%	6	0%	8	0%	33%	28	0%
Age 60+	3	0%	4	0%	2	0%	3	0%	1	0%	-67%	13	0%
Column Total	609	100%	657	100%	833	100%	902	100%	846	100%	-6%	3,847	100%

Source: SMCCCD Data Warehouse

*Note: Counts and percents are based on census figures.

**Note: The variations in total numbers each year within the demographic segments are due to missing data points, and, in the case of age, also due to students crossing a category threshold during a year (18-22 in Fall, 23-28 in Spring).

Unique Headcount by Status

	2006/07		2007/08		2008/09		2009/10		2010/11		Change 09/10-10/11	5 Year Row Total & Average	
Continuing	402	66%	448	63%	582	66%	621	68%	617	72%	-1%	2,670	67%
Currently K-12	9	2%	15	3%	11	2%	22	3%	7	1%	-68%	64	2%
First-Time	66	11%	44	9%	58	9%	48	6%	48	6%	0%	264	8%
First-Time Transfer	57	10%	80	17%	93	14%	122	15%	97	12%	-20%	449	14%
Returning	45	7%	40	5%	64	6%	50	5%	59	6%	18%	258	6%
Returning Transfer	34	4%	35	3%	40	3%	47	3%	26	2%	-45%	182	3%
Column Total	613	100%	662	100%	848	100%	910	100%	854	100%	-6%	3,887	100%

Unique Headcount by Course-Taking Pattern (Fall and Spring only)

	2006/07		2007/08		2008/09		2009/10		2010/11		Change 09/10-10/11	5 Year Row Total & Average	
Day	382	63%	421	65%	526	65%	578	65%	530	66%	-8%	2,437	65%
Day and Evening	1	0%	1	0%	5	0%	5	1%	13	2%	160%	25	1%
Evening	232	37%	243	35%	318	34%	337	34%	315	33%	-7%	1,445	34%
Column Total	615	100%	665	100%	849	100%	920	100%	858	100%	-7%	3,907	100%

Unique Headcount by Educational Goal

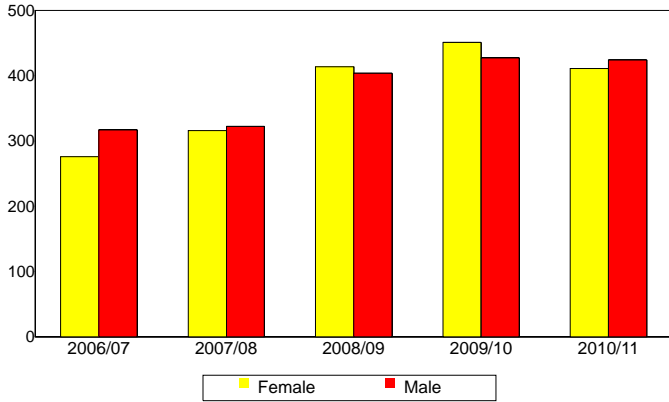
	2006/07		2007/08		2008/09		2009/10		2010/11		Change 09/10-10/11	5 Year Row Total & Average	
Transfer	497	82%	389	57%	511	62%	546	62%	576	69%	5%	2,519	65%
AA/AS w/o Transfer	13	2%	16	2%	16	2%	30	3%	18	2%	-40%	93	2%
Certificate w/o Transfer	1	0%	4	0%	3	0%	7	1%	5	1%	-29%	20	0%
Acquire/Update Job Skills	10	2%	12	2%	6	0%	18	1%	26	2%	44%	72	2%
Complete HS Credits	4	1%	9	2%	7	1%	15	2%	4	1%	-73%	39	1%
Educational Development	25	4%	19	3%	25	2%	20	2%	24	3%	20%	113	3%
Formulate Career Plans/G	2	0%	2	0%	8	1%	11	1%	4	0%	-64%	27	1%
Improve Basic Skills	1	0%	1	0%	1	0%	3	0%	2	0%	-33%	8	0%
Maintain Certificate/Licens					2	0%			1	0%		3	0%
Undecided/Unreported	58	10%	214	33%	261	31%	251	27%	188	22%	-25%	972	26%
Column Total	611	100%	666	100%	840	100%	901	100%	848	100%	-6%	3,866	100%

Source: SMCCCD Data Warehouse

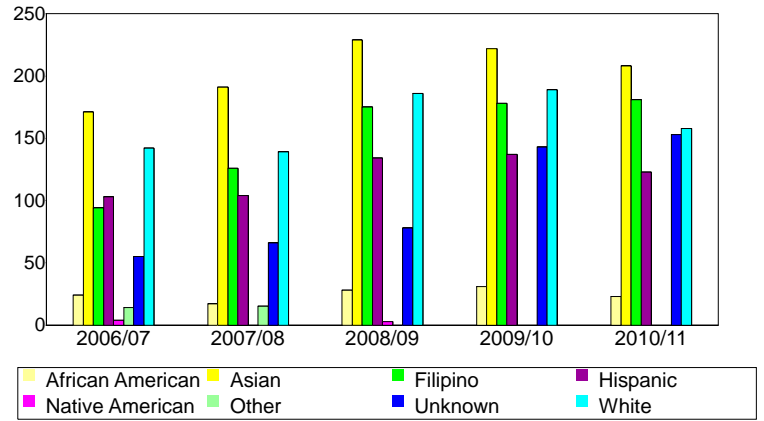
*Note: Counts and percents are based on census figures for summer, fall and spring.

**Note: The variations in total numbers each year within the Status, Course-Taking, and Educational Goal tables are due to missing data points and also due to students changing Status, Pattern, or Educational Goal within a given year - e.g. "First Time Student" in Fall and "Continuing Student" in Spring.

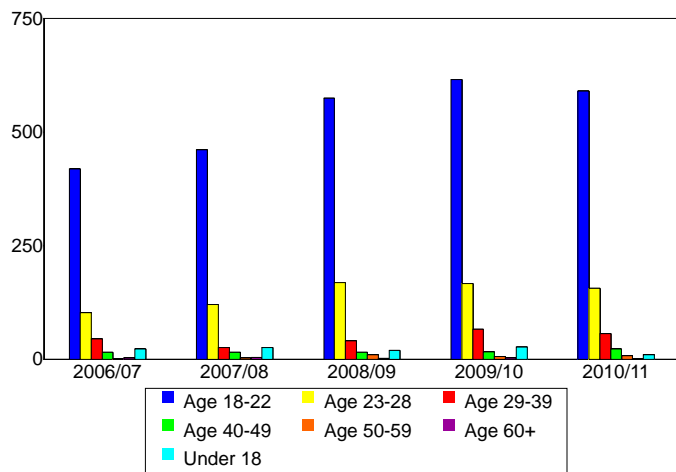
Unique Headcount by Gender



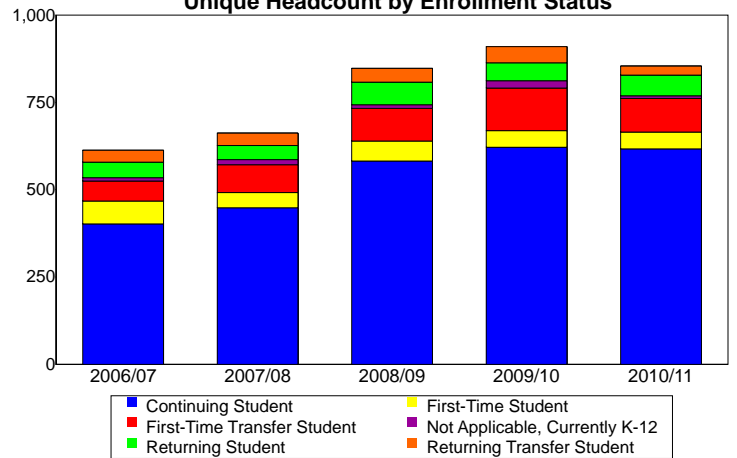
Unique Headcount by Ethnicity



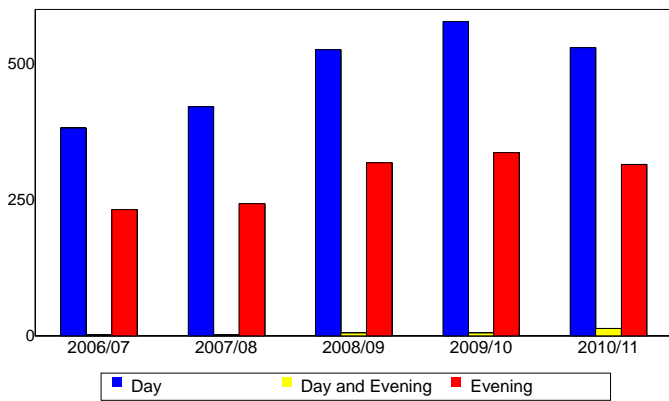
Unique Headcount by Student Age



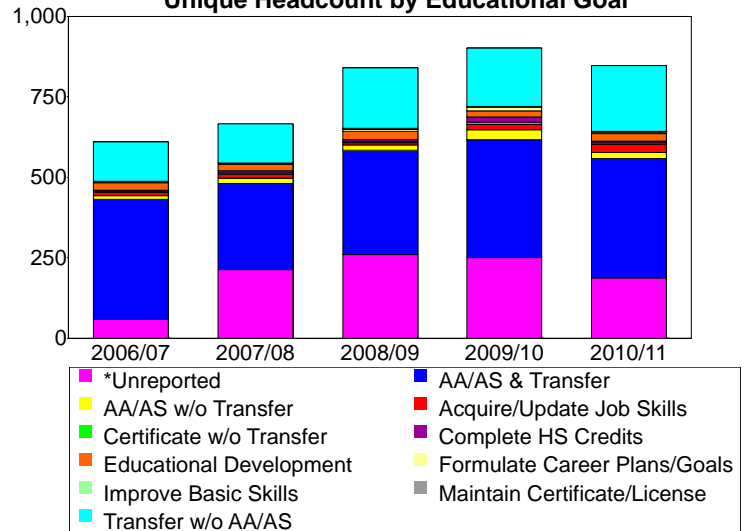
Unique Headcount by Enrollment Status



Unique Headcount by Course-Taking Pattern



Unique Headcount by Educational Goal



Source: SMCCCD Data Warehouse