

## Psychology Department Productivity: By Year and By Term 2006/07 through 2010/11

|         | Census<br>Headcount | End of<br>Term<br>Headcount | FTEF  | FTES          | WSCH   | Load | Sections | Max<br>Enroll |
|---------|---------------------|-----------------------------|-------|---------------|--------|------|----------|---------------|
| 2006/07 | 1,787               | 1,473                       | 9.70  | <b>187.16</b> | 5,615  | 579  | 56       | 2,250         |
| 2007/08 | 2,025               | 1,650                       | 10.80 | <b>208.07</b> | 6,242  | 578  | 62       | 2,465         |
| 2008/09 | 2,435               | 2,015                       | 12.00 | <b>252.74</b> | 7,582  | 632  | 69       | 2,785         |
| 2009/10 | 3,130               | 2,709                       | 13.53 | <b>322.94</b> | 9,688  | 716  | 77       | 3,234         |
| 2010/11 | 3,190               | 2,720                       | 13.70 | <b>346.78</b> | 10,403 | 759  | 77       | 3,249         |

|             | Census<br>Headcount | End of<br>Term<br>Headcount | FTEF | FTES          | WSCH  | Load | Sections | Max<br>Enroll |
|-------------|---------------------|-----------------------------|------|---------------|-------|------|----------|---------------|
| Fall 2006   | 757                 | 629                         | 3.90 | <b>81.01</b>  | 2,430 | 623  | 23       | 955           |
| Fall 2007   | 793                 | 651                         | 4.40 | <b>83.95</b>  | 2,519 | 572  | 26       | 1,033         |
| Fall 2008   | 973                 | 835                         | 4.90 | <b>101.76</b> | 3,053 | 623  | 28       | 1,088         |
| Fall 2009   | 1,327               | 1,133                       | 5.73 | <b>135.56</b> | 4,067 | 709  | 32       | 1,292         |
| Fall 2010   | 1,279               | 1,091                       | 5.70 | <b>134.55</b> | 4,036 | 708  | 32       | 1,296         |
| Spring 2007 | 765                 | 598                         | 4.30 | <b>79.90</b>  | 2,397 | 557  | 24       | 960           |
| Spring 2008 | 901                 | 714                         | 4.70 | <b>93.96</b>  | 2,819 | 600  | 26       | 1,053         |
| Spring 2009 | 1,157               | 926                         | 5.60 | <b>120.21</b> | 3,606 | 644  | 32       | 1,322         |
| Spring 2010 | 1,249               | 1,059                       | 5.70 | <b>131.26</b> | 3,938 | 691  | 32       | 1,307         |
| Spring 2011 | 1,366               | 1,138                       | 6.10 | <b>158.32</b> | 4,750 | 779  | 34       | 1,443         |
| Summer 2006 | 265                 | 246                         | 1.50 | <b>26.25</b>  | 787   | 525  | 9        | 335           |
| Summer 2007 | 331                 | 285                         | 1.70 | <b>30.16</b>  | 905   | 532  | 10       | 380           |
| Summer 2008 | 305                 | 254                         | 1.50 | <b>30.77</b>  | 923   | 615  | 9        | 375           |
| Summer 2009 | 554                 | 517                         | 2.10 | <b>56.13</b>  | 1,684 | 802  | 13       | 635           |
| Summer 2010 | 545                 | 491                         | 1.90 | <b>53.92</b>  | 1,617 | 851  | 11       | 510           |

Source: SMCCCD Data Warehouse

Census Headcount: Number of duplicated headcount at final census.

End of Term Headcount: Number of duplicated headcount at the end of the term.

FTEF: Total number of full time equivalent faculty assigned.

FTES: Total number of full time equivalent students enrolled at first census.

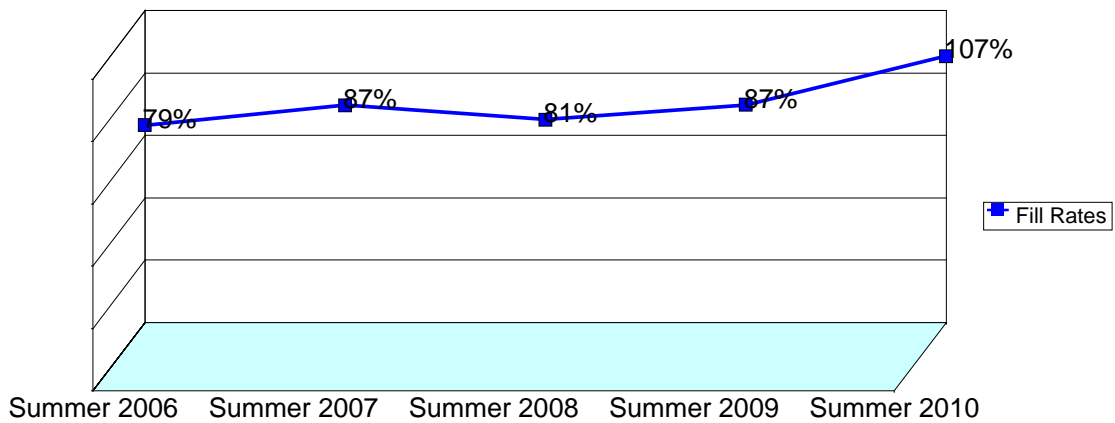
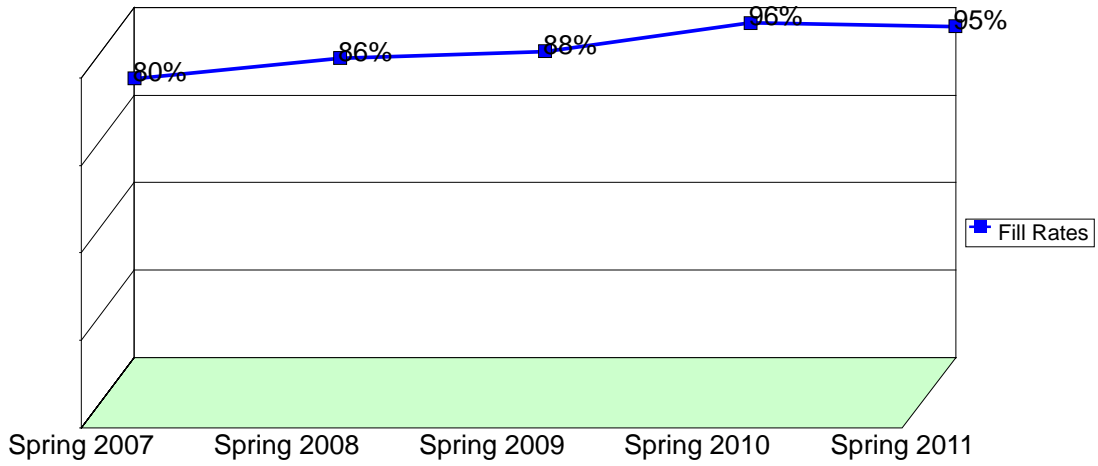
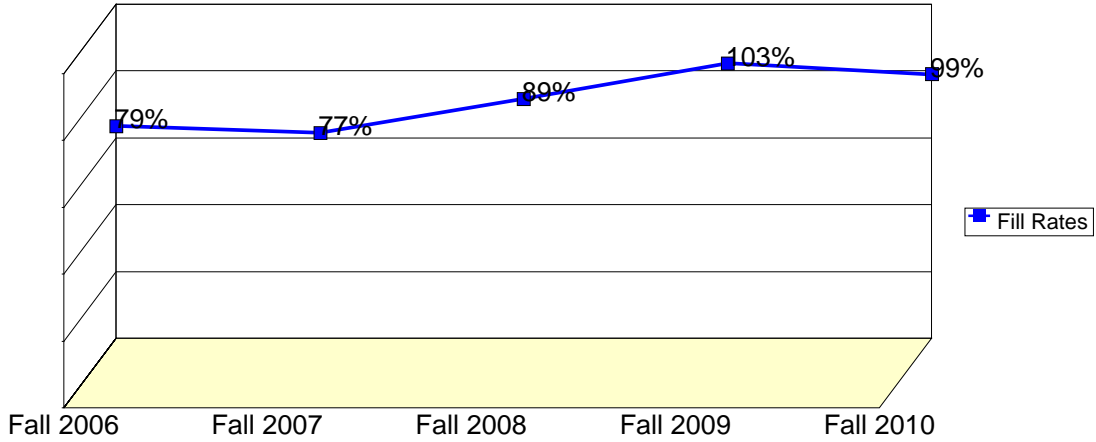
WSCH: Weekly student contact hours generated by census enrollments.

Load: The ratio of WSCH to FTEF, used to measure productivity.

Sections: Total number of sections offered per semester.

Max Enroll: The enrollment capacity or maximum enrollment as defined in curriculum.

## Department Fill Rates by Term



Source: SMCCCD Data Warehouse

Fill Rates: The percent a class fills/enrolls based on capacity or enrollment maximum defined in the curriculum (does not include positive attendance or open entry/open exit classes).

## Department Productivity: Term by Course

|                  |      |     | Census                         | End of | FTEF | FTES | WSCH  | Load  | Sections | Max    |     |
|------------------|------|-----|--------------------------------|--------|------|------|-------|-------|----------|--------|-----|
|                  |      |     | Headcount                      | Term   |      |      |       |       |          | Enroll |     |
| <b>Fall 2006</b> | PSYC | 100 | General Psychology             | 345    | 286  | 1.60 | 35.36 | 1,061 | 663      | 8      | 360 |
|                  |      | 171 | Quantitative Reasoning in Psyc | 76     | 72   | 0.40 | 10.49 | 315   | 787      | 2      | 90  |
|                  |      | 200 | Developmental Psychology       | 140    | 123  | 0.60 | 15.23 | 457   | 762      | 3      | 170 |
|                  |      | 201 | Child Development              | 64     | 44   | 0.50 | 6.51  | 195   | 391      | 5      | 220 |
|                  |      | 268 | Black Psychology               | 26     | 17   | 0.10 | 2.60  | 78    | 780      | 1      | 45  |
|                  |      |     | Black Psychology-Honors        | 11     | 9    | 0.10 | 1.10  | 33    | 330      | 1      | 45  |
|                  |      | 300 | Social Psychology              | 36     | 29   | 0.20 | 3.60  | 108   | 540      | 1      | 45  |
|                  |      | 410 | Abnormal Psychology            | 59     | 49   | 0.40 | 6.12  | 184   | 459      | 2      | 90  |
| <b>Fall 2007</b> | PSYC | 100 | General Psychology             | 410    | 349  | 1.80 | 41.77 | 1,253 | 696      | 9      | 405 |
|                  |      | 110 | Courtship, Marriage & Family   | 9      | 3    | 0.10 | 0.99  | 30    | 297      | 1      | 45  |
|                  |      | 171 | Quantitative Reasoning in Psyc | 61     | 55   | 0.40 | 8.43  | 253   | 633      | 2      | 90  |
|                  |      | 200 | Developmental Psychology       | 130    | 114  | 0.60 | 13.95 | 418   | 697      | 3      | 135 |
|                  |      | 201 | Child Development              | 70     | 36   | 0.50 | 7.14  | 214   | 428      | 5      | 220 |
|                  |      | 268 | Black Psychology               | 9      | 7    | 0.10 | 0.90  | 27    | 270      | 1      | 45  |
|                  |      |     | Black Psychology-Honors        | 3      | 3    | 0.10 | 0.30  | 9     | 90       | 1      | 45  |
|                  |      | 300 | Social Psychology              | 10     | 9    | 0.20 | 1.00  | 30    | 150      | 1      | 45  |
|                  |      |     | Social Psychology-Honors       | 20     | 17   | 0.20 | 2.00  | 60    | 300      | 1      | 45  |
|                  |      | 410 | Abnormal Psychology            | 71     | 58   | 0.40 | 7.47  | 224   | 560      | 2      | 90  |
| <b>Fall 2008</b> | PSYC | 100 | General Psychology             | 481    | 417  | 2.20 | 48.78 | 1,464 | 665      | 11     | 495 |
|                  |      | 110 | Courtship, Marriage & Family   | 40     | 33   | 0.20 | 4.12  | 124   | 618      | 2      | 90  |
|                  |      | 171 | Quantitative Reasoning in Psyc | 70     | 66   | 0.40 | 9.64  | 289   | 723      | 2      | 90  |
|                  |      | 200 | Developmental Psychology       | 165    | 143  | 0.80 | 17.55 | 527   | 658      | 4      | 180 |
|                  |      | 201 | Child Development              | 76     | 55   | 0.50 | 7.56  | 227   | 454      | 5      | 220 |
|                  |      | 268 | Black Psychology               | 16     | 10   | 0.20 | 1.60  | 48    | 240      | 1      | 45  |
|                  |      | 300 | Social Psychology-Honors       | 34     | 31   | 0.20 | 3.40  | 102   | 510      | 1      | 33  |
|                  |      | 410 | Abnormal Psychology            | 91     | 80   | 0.40 | 9.10  | 273   | 683      | 2      | 90  |
| <b>Fall 2009</b> | PSYC | 100 | General Psychology             | 605    | 498  | 2.60 | 60.52 | 1,816 | 698      | 13     | 546 |
|                  |      | 110 | Courtship, Marriage & Family   | 75     | 64   | 0.20 | 6.70  | 201   | 1,005    | 2      | 145 |
|                  |      | 171 | Quantitative Reasoning in Psyc | 74     | 70   | 0.40 | 10.48 | 315   | 786      | 2      | 90  |
|                  |      | 200 | Developmental Psychology       | 280    | 251  | 0.80 | 27.87 | 836   | 1,045    | 4      | 235 |
|                  |      | 201 | Child Development              | 63     | 49   | 0.53 | 6.53  | 196   | 367      | 5      | 220 |
|                  |      | 300 | Social Psychology              | 40     | 31   | 0.20 | 4.00  | 120   | 600      | 1      | 45  |
|                  |      |     | Social Psychology-Honors       | 30     | 27   | 0.20 | 3.00  | 90    | 450      | 1      | 28  |
|                  |      | 301 | Psyc of Personal Development   | 37     | 35   | 0.20 | 3.70  | 111   | 555      | 1      | 45  |
|                  |      | 410 | Abnormal Psychology            | 88     | 76   | 0.40 | 9.26  | 278   | 695      | 2      | 90  |
|                  |      |     | Abnormal Psychology-Honors     | 35     | 32   | 0.20 | 3.50  | 105   | 525      | 1      | 30  |
| <b>Fall 2010</b> | PSYC | 100 | General Psychology             | 596    | 491  | 2.60 | 60.49 | 1,815 | 698      | 13     | 546 |
|                  |      | 110 | Courtship, Marriage & Family   | 58     | 52   | 0.10 | 5.80  | 174   | 1,740    | 1      | 100 |
|                  |      | 171 | Quantitative Reasoning in Psyc | 73     | 71   | 0.40 | 10.57 | 317   | 793      | 2      | 90  |
|                  |      | 200 | Developmental Psychology       | 212    | 192  | 0.80 | 22.49 | 675   | 843      | 4      | 235 |
|                  |      |     | Developmental Psychology-Honor | 29     | 29   | 0.20 | 2.90  | 87    | 435      | 1      | 31  |
|                  |      | 201 | Child Development              | 114    | 92   | 0.60 | 11.52 | 346   | 576      | 6      | 265 |
|                  |      | 300 | Social Psychology              | 44     | 38   | 0.20 | 4.40  | 132   | 660      | 1      | 45  |
|                  |      |     | Social Psychology-Honors       | 30     | 25   | 0.20 | 3.00  | 90    | 450      | 1      | 31  |
|                  |      | 301 | Psyc of Personal Development   | 33     | 26   | 0.20 | 3.63  | 109   | 545      | 1      | 45  |
|                  |      | 410 | Abnormal Psychology            | 90     | 75   | 0.40 | 9.75  | 293   | 731      | 2      | 90  |
| <b>Spring</b>    | PSYC | 100 | General Psychology             | 356    | 260  | 1.80 | 36.15 | 1,085 | 603      | 9      | 405 |

|                        |      |                     | Census<br>Headcount            | End of<br>Term<br>Headcount | FTEF | FTES | WSCH  | Load  | Sections | Max<br>Enroll |     |
|------------------------|------|---------------------|--------------------------------|-----------------------------|------|------|-------|-------|----------|---------------|-----|
| <b>2007</b>            |      | 105                 | Experimental Psychology        | 36                          | 28   | 0.20 | 3.60  | 108   | 540      | 1             | 45  |
|                        |      | 110                 | Courtship, Marriage and Family | 21                          | 14   | 0.10 | 2.10  | 63    | 630      | 1             | 45  |
|                        |      | 171                 | Quantitative Reasoning in Psyc | 72                          | 70   | 0.40 | 9.99  | 300   | 749      | 2             | 90  |
|                        |      | 200                 | Developmental Psychology       | 134                         | 119  | 0.60 | 13.40 | 402   | 670      | 3             | 135 |
|                        |      | 201                 | Child Development              | 38                          | 23   | 0.40 | 3.86  | 116   | 289      | 4             | 175 |
|                        |      | 268                 | Black Psychology               | 16                          | 12   | 0.20 | 1.60  | 48    | 240      | 1             | 45  |
|                        |      | 300                 | Social Psychology              | 31                          | 24   | 0.20 | 3.10  | 93    | 465      | 1             | 45  |
|                        |      | 390                 | Psychology of Consciousness    | 21                          | 15   | 0.20 | 2.10  | 63    | 315      | 1             | 40  |
|                        |      | 410                 | Abnormal Psychology            | 40                          | 33   | 0.20 | 4.00  | 120   | 600      | 1             | 45  |
| <b>Spring<br/>2008</b> | PSYC | 100                 | General Psychology             | 433                         | 326  | 2.20 | 43.72 | 1,312 | 596      | 11            | 495 |
|                        |      | 105                 | Experimental Psychology        | 37                          | 37   | 0.20 | 3.70  | 111   | 555      | 1             | 45  |
|                        |      | 110                 | Courtship, Marriage and Family | 44                          | 40   | 0.10 | 4.40  | 132   | 1,320    | 1             | 45  |
|                        |      | 171                 | Quantitative Reasoning in Psyc | 77                          | 73   | 0.40 | 10.90 | 327   | 818      | 2             | 90  |
|                        |      | 200                 | Developmental Psychology       | 137                         | 127  | 0.60 | 13.70 | 411   | 685      | 3             | 135 |
|                        |      | 201                 | Child Development              | 62                          | 38   | 0.40 | 6.44  | 193   | 483      | 4             | 180 |
|                        |      | 268                 | Black Psychology               | 10                          | 2    | 0.20 | 1.00  | 30    | 150      | 1             | 45  |
|                        |      | 300                 | Social Psychology              | 46                          | 31   | 0.20 | 4.60  | 138   | 690      | 1             | 45  |
|                        |      | 390                 | Psychology of Consciousness    | 19                          | 12   | 0.20 | 1.90  | 57    | 285      | 1             | 40  |
|                        | 410  | Abnormal Psychology | 36                             | 28                          | 0.20 | 3.60 | 108   | 540   | 1        | 45            |     |
| <b>Spring<br/>2009</b> | PSYC | 100                 | General Psychology             | 658                         | 495  | 2.90 | 67.19 | 2,016 | 695      | 15            | 687 |
|                        |      |                     | General Psychology-ASTEP       | 6                           | 4    | 0.10 | 0.64  | 19    | 192      | 1             | 45  |
|                        |      | 105                 | Experimental Psychology        | 27                          | 27   | 0.20 | 2.70  | 81    | 405      | 1             | 45  |
|                        |      | 110                 | Courtship, Marriage and Family | 28                          | 24   | 0.10 | 2.80  | 84    | 840      | 1             | 45  |
|                        |      | 171                 | Quantitative Reasoning in Psyc | 65                          | 55   | 0.40 | 9.25  | 278   | 694      | 2             | 90  |
|                        |      | 200                 | Developmental Psychology       | 170                         | 160  | 0.60 | 17.00 | 510   | 850      | 3             | 190 |
|                        |      | 201                 | Child Development              | 71                          | 45   | 0.50 | 7.43  | 223   | 446      | 5             | 225 |
|                        |      | 300                 | Social Psychology              | 42                          | 35   | 0.20 | 4.20  | 126   | 630      | 1             | 45  |
|                        |      | 301                 | Psyc of Personal Development   | 17                          | 17   | 0.20 | 1.70  | 51    | 255      | 1             | 45  |
|                        |      | 390                 | Psychology of Consciousness    | 32                          | 29   | 0.20 | 3.20  | 96    | 480      | 1             | 40  |
|                        | 410  | Abnormal Psychology | 41                             | 35                          | 0.20 | 4.10 | 123   | 615   | 1        | 45            |     |
| <b>Spring<br/>2010</b> | PSYC | 100                 | General Psychology             | 576                         | 472  | 2.80 | 59.38 | 1,782 | 636      | 14            | 587 |
|                        |      |                     | General Psychology- Honors     | 31                          | 27   | 0.20 | 3.10  | 93    | 465      | 1             | 30  |
|                        |      | 105                 | Experimental Psychology        | 39                          | 34   | 0.20 | 3.90  | 117   | 585      | 1             | 45  |
|                        |      | 110                 | Courtship, Marriage & Family   | 72                          | 62   | 0.10 | 7.20  | 216   | 2,160    | 1             | 100 |
|                        |      |                     | Courtship, Marriage and Family | 35                          | 32   | 0.10 | 3.50  | 105   | 1,050    | 1             | 45  |
|                        |      | 171                 | Quantitative Reasoning in Psyc | 74                          | 71   | 0.40 | 10.45 | 314   | 784      | 2             | 90  |
|                        |      | 200                 | Developmental Psychology       | 211                         | 197  | 0.60 | 22.12 | 664   | 1,106    | 3             | 190 |
|                        |      | 201                 | Child Development              | 80                          | 56   | 0.50 | 8.51  | 255   | 510      | 5             | 225 |
|                        |      | 268                 | Black Psychology               | 25                          | 13   | 0.20 | 2.50  | 75    | 375      | 1             | 45  |
|                        |      | 300                 | Social Psychology              | 43                          | 40   | 0.20 | 4.30  | 129   | 645      | 1             | 45  |
|                        |      | 410                 | Abnormal Psychology            | 35                          | 30   | 0.20 | 3.50  | 105   | 525      | 1             | 45  |
|                        |      | 680                 | Sports Psychology              | 28                          | 25   | 0.20 | 2.80  | 84    | 420      | 1             | 45  |
| <b>Spring<br/>2011</b> | PSYC | 100                 | General Psychology             | 622                         | 498  | 2.80 | 63.64 | 1,909 | 682      | 14            | 622 |
|                        |      |                     | General Psychology- Honors     | 21                          | 17   | 0.20 | 2.10  | 63    | 315      | 1             | 30  |
|                        |      | 105                 | Experimental Psychology        | 45                          | 44   | 0.20 | 4.50  | 135   | 675      | 1             | 45  |
|                        |      | 110                 | Courtship, Marriage & Family   | 63                          | 54   | 0.10 | 6.30  | 189   | 1,890    | 1             | 100 |
|                        |      |                     | Courtship, Marriage and Family | 36                          | 32   | 0.10 | 3.60  | 108   | 1,080    | 1             | 45  |
|                        |      | 171                 | Quantitative Reasoning in Psyc | 75                          | 73   | 0.40 | 11.17 | 335   | 838      | 2             | 91  |

|                        |      |     | Census<br>Headcount            | End of<br>Term<br>Headcount | FTEF | FTES | WSCH  | Load  | Sections | Max<br>Enroll |     |
|------------------------|------|-----|--------------------------------|-----------------------------|------|------|-------|-------|----------|---------------|-----|
|                        |      | 200 | Developmental Psychology       | 260                         | 236  | 0.80 | 37.80 | 1,134 | 1,418    | 4             | 235 |
|                        |      | 201 | Child Development              | 95                          | 71   | 0.50 | 14.31 | 429   | 859      | 5             | 255 |
|                        |      | 268 | Black Psychology               | 14                          | 10   | 0.20 | 1.40  | 42    | 210      | 1             | 45  |
|                        |      | 300 | Social Psychology              | 45                          | 28   | 0.20 | 4.50  | 135   | 675      | 1             | 45  |
|                        |      | 390 | Psychology of Consciousness    | 30                          | 23   | 0.20 | 3.00  | 90    | 450      | 1             | 40  |
|                        |      | 410 | Abnormal Psychology            | 48                          | 42   | 0.20 | 4.80  | 144   | 720      | 1             | 45  |
|                        |      | 680 | Sports Psychology              | 12                          | 10   | 0.20 | 1.20  | 36    | 180      | 1             | 45  |
| <b>Summer<br/>2006</b> | PSYC | 100 | General Psychology             | 92                          | 83   | 0.40 | 9.80  | 294   | 735      | 2             | 90  |
|                        |      | 171 | Quantitative Reasoning in Psyc | 39                          | 39   | 0.20 | 3.57  | 107   | 535      | 1             | 45  |
|                        |      | 200 | Developmental Psychology       | 100                         | 93   | 0.60 | 9.58  | 288   | 479      | 3             | 135 |
|                        |      | 201 | Child Development              | 34                          | 31   | 0.30 | 3.30  | 99    | 330      | 3             | 130 |
| <b>Summer<br/>2007</b> | PSYC | 100 | General Psychology             | 148                         | 120  | 0.60 | 12.72 | 381   | 636      | 3             | 135 |
|                        |      | 171 | Quantitative Reasoning in Psyc | 38                          | 37   | 0.20 | 3.58  | 107   | 537      | 1             | 45  |
|                        |      | 200 | Developmental Psychology       | 100                         | 89   | 0.60 | 9.55  | 287   | 478      | 3             | 135 |
|                        |      | 201 | Child Development              | 45                          | 39   | 0.30 | 4.31  | 129   | 431      | 3             | 130 |
| <b>Summer<br/>2008</b> | PSYC | 100 | General Psychology             | 187                         | 141  | 0.60 | 19.01 | 570   | 951      | 3             | 175 |
|                        |      | 200 | Developmental Psychology       | 94                          | 91   | 0.60 | 9.36  | 281   | 468      | 3             | 135 |
|                        |      | 201 | Child Development              | 24                          | 22   | 0.30 | 2.39  | 72    | 239      | 3             | 130 |
| <b>Summer<br/>2009</b> | PSYC | 100 | General Psychology             | 153                         | 146  | 0.60 | 15.63 | 469   | 781      | 3             | 135 |
|                        |      | 110 | Courtship, Marriage & Family   | 87                          | 83   | 0.20 | 8.70  | 261   | 1,305    | 2             | 200 |
|                        |      | 200 | Developmental Psychology       | 266                         | 247  | 1.00 | 26.80 | 804   | 804      | 5             | 335 |
|                        |      | 201 | Child Development              | 48                          | 41   | 0.30 | 4.99  | 150   | 499      | 3             | 130 |
| <b>Summer<br/>2010</b> | PSYC | 100 | General Psychology             | 208                         | 177  | 0.80 | 20.49 | 615   | 768      | 4             | 180 |
|                        |      | 110 | Courtship, Marriage & Family   | 55                          | 50   | 0.10 | 5.50  | 165   | 1,650    | 1             | 100 |
|                        |      | 200 | Developmental Psychology       | 199                         | 186  | 0.60 | 19.68 | 590   | 984      | 3             | 190 |
|                        |      | 201 | Child Development              | 38                          | 36   | 0.20 | 3.72  | 112   | 558      | 2             | 90  |
|                        |      | 410 | Abnormal Psychology            | 45                          | 42   | 0.20 | 4.53  | 136   | 680      | 1             | 45  |