

Student Government Productivity: By Year and By Term 2006/07 through 2010/11

	Census Headcount	End of Term Headcount	FTEF	FTES	WSCH	Load	Sections	Max Enroll
2006/07	17	14	0.10	0.73	22	219	2	55
2007/08	41	37	0.23	1.71	51	220	6	122
2008/09	21	18	0.03	0.51	15	462	4	33
2009/10	3	3	0.00	0.10	3	#INF	2	17

	Census Headcount	End of Term Headcount	FTEF	FTES	WSCH	Load	Sections	Max Enroll
Fall 2006	17	14	0.10	0.73	22	219	2	55
Fall 2007	23	21	0.10	1.11	33	334	3	60
Fall 2008	12	10	0.03	0.18	5	162	2	30
Fall 2009	2	2	0.00	0.07	2	#INF	1	5
Spring 2008	18	16	0.13	0.60	18	135	3	62
Spring 2009	8	7	0.00	0.27	8	#INF	1	2
Spring 2010	1	1	0.00	0.03	1	#INF	1	12
Summer 2008	1	1	0.00	0.07	2	#INF	1	1

Source: SMCCCD Data Warehouse

Census Headcount: Number of duplicated headcount at final census.

End of Term Headcount: Number of duplicated headcount at the end of the term.

FTEF: Total number of full time equivalent faculty assigned.

FTES: Total number of full time equivalent students enrolled at first census.

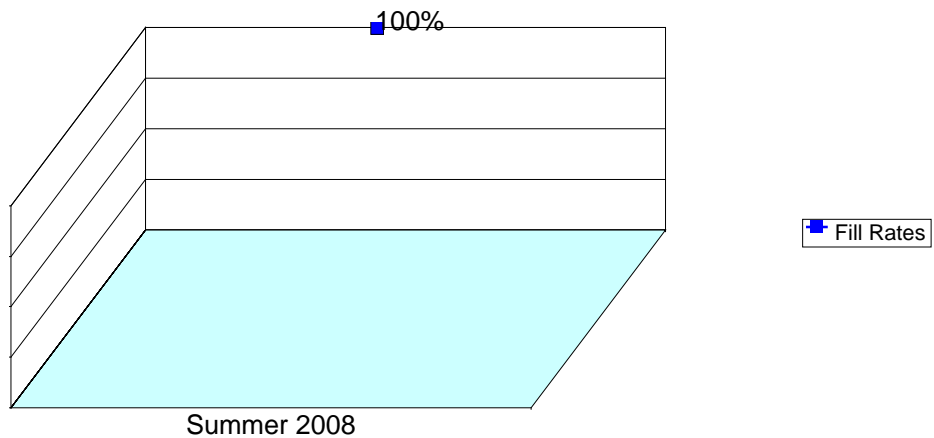
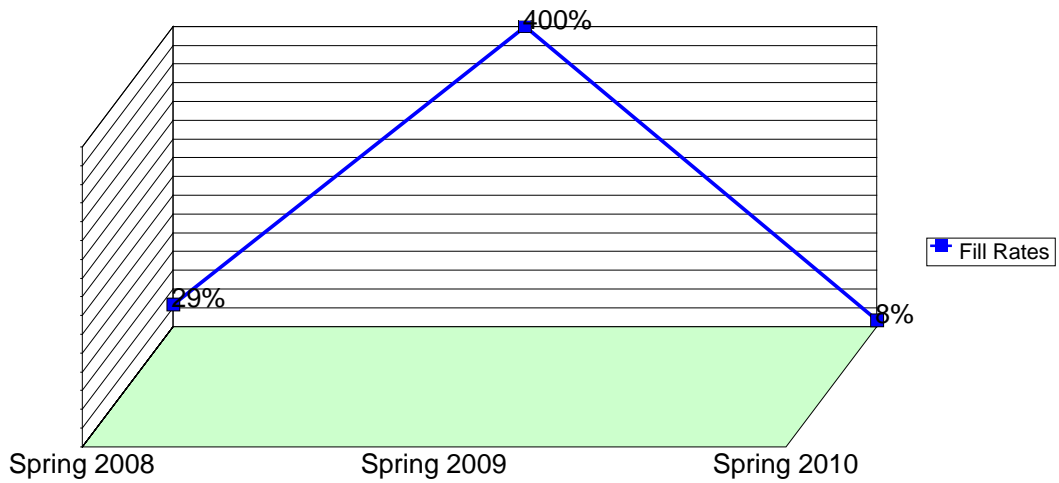
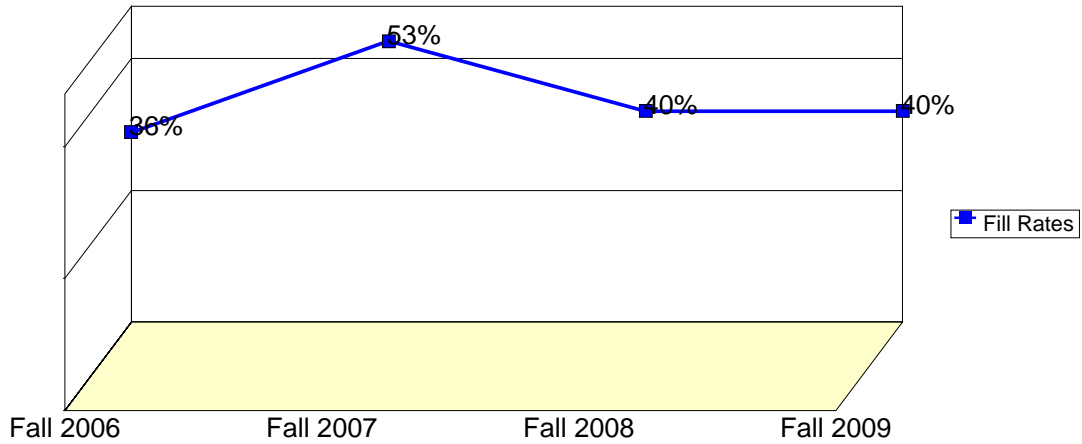
WSCH: Weekly student contact hours generated by census enrollments.

Load: The ratio of WSCH to FTEF, used to measure productivity.

Sections: Total number of sections offered per semester.

Max Enroll: The enrollment capacity or maximum enrollment as defined in curriculum.

Department Fill Rates by Term



Source: SMCCCD Data Warehouse

Fill Rates: The percent a class fills/enrolls based on capacity or enrollment maximum defined in the curriculum (does not include positive attendance or open entry/open exit classes).

Department Productivity: Term by Course

				Census Headcount	End of Term Headcount	FTEF	FTES	WSCH	Load	Sections	Max Enroll
Fall 2006	SGOV	111	Student Government I	8	7	0.07	0.17	5	77	1	30
		115	Community Service & Leadership	9	7	0.03	0.56	17	502	1	25
Fall 2007	SGOV	111	Student Government I	7	6	0.07	0.15	5	69	1	30
		115	Community Service & Leadership	16	15	0.03	0.96	29	865	1	25
		690	Special Project	0	0	0.00				1	5
Fall 2008	SGOV	115	Community Service & Leadership	11	9	0.03	0.15	4	132	1	25
		690	Special Project	1	1	0.00	0.03	1	#INF	1	5
Fall 2009	SGOV	690	Special Project	2	2	0.00	0.07	2	#INF	1	5
Spring 2008	SGOV	112	Student Government II	5	5	0.07	0.17	5	75	1	30
		115	Community Service & Leadership	11	9	0.07	0.37	11	165	1	30
		690	Special Project	2	2	0.00	0.07	2	#INF	1	2
Spring 200	SGOV	690	Special Project	8	7	0.00	0.27	8	#INF	1	2
Spring 201	SGOV	690	Special Project	1	1	0.00	0.03	1	#INF	1	12
Summer 20	SGOV	690	Special Project	1	1	0.00	0.07	2	#INF	1	1