

Sociology Department Productivity: By Year and By Term 2006/07 through 2010/11

	Census Headcount	End of Term Headcount	FTEF	FTES	WSCH	Load	Sections	Max Enroll
2006/07	421	308	2.80	42.32	1,270	453	15	665
2007/08	489	356	3.10	48.80	1,464	472	19	725
2008/09	572	430	3.60	58.04	1,741	484	21	833
2009/10	787	653	4.10	80.07	2,402	586	25	1,036
2010/11	829	627	4.10	83.21	2,496	609	23	990

	Census Headcount	End of Term Headcount	FTEF	FTES	WSCH	Load	Sections	Max Enroll
Fall 2006	166	118	1.10	16.87	506	460	6	248
Fall 2007	175	136	1.00	18.03	541	541	6	225
Fall 2008	207	167	1.50	21.23	637	425	10	341
Fall 2009	324	255	1.90	32.63	979	515	12	458
Fall 2010	314	234	1.60	31.76	953	596	9	388
Spring 2007	157	111	1.30	15.69	471	362	7	293
Spring 2008	216	149	1.70	21.60	648	381	10	368
Spring 2009	256	174	1.70	25.60	768	452	9	368
Spring 2010	334	280	1.60	34.15	1,025	640	9	388
Spring 2011	384	282	2.00	38.68	1,161	580	11	463
Summer 2006	98	79	0.40	9.77	293	732	2	125
Summer 2007	98	71	0.40	9.17	275	688	3	132
Summer 2008	109	89	0.40	11.21	336	841	2	125
Summer 2009	129	118	0.60	13.29	399	665	4	190
Summer 2010	131	111	0.50	12.77	383	766	3	140

Source: SMCCCD Data Warehouse

Census Headcount: Number of duplicated headcount at final census.

End of Term Headcount: Number of duplicated headcount at the end of the term.

FTEF: Total number of full time equivalent faculty assigned.

FTES: Total number of full time equivalent students enrolled at first census.

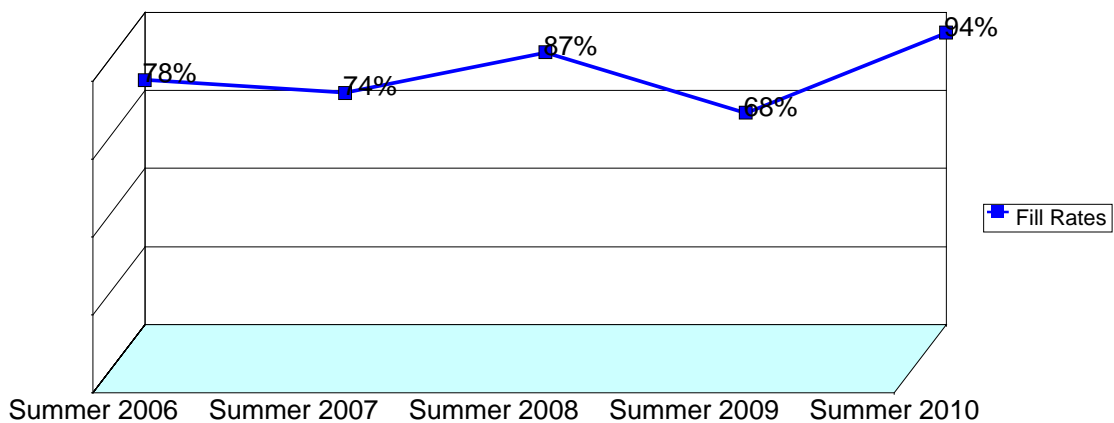
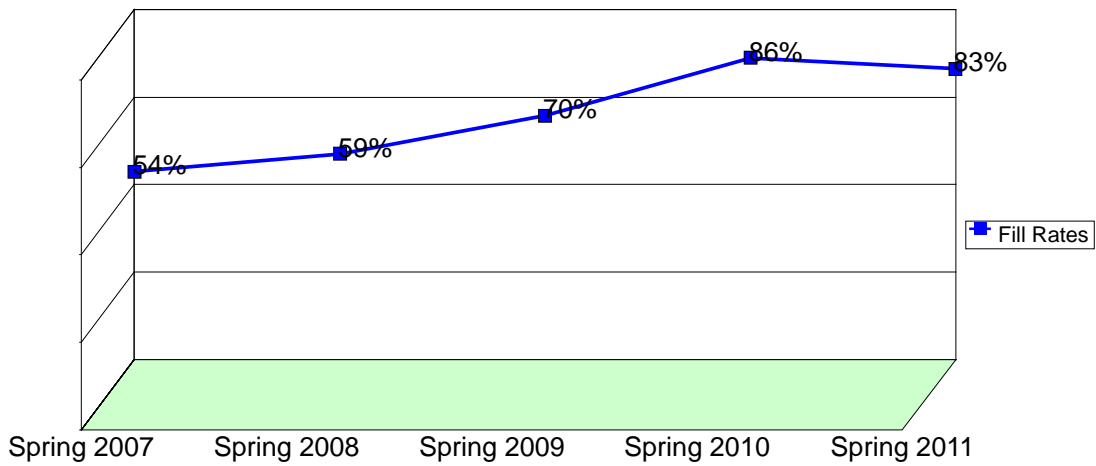
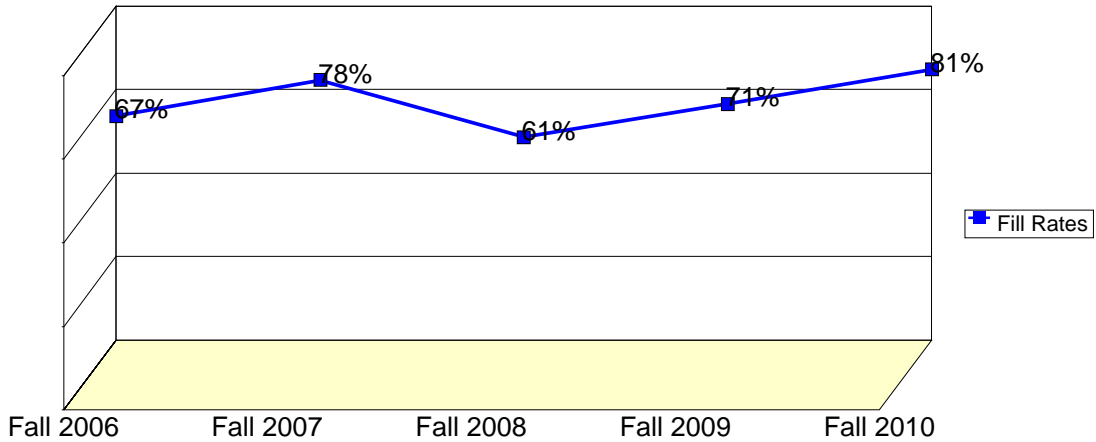
WSCH: Weekly student contact hours generated by census enrollments.

Load: The ratio of WSCH to FTEF, used to measure productivity.

Sections: Total number of sections offered per semester.

Max Enroll: The enrollment capacity or maximum enrollment as defined in curriculum.

Department Fill Rates by Term



Source: SMCCCD Data Warehouse

Fill Rates: The percent a class fills/enrolls based on capacity or enrollment maximum defined in the curriculum (does not include positive attendance or open entry/open exit classes).

Department Productivity: Term by Course

				Census Headcount	End of Term Headcount	FTEF	FTES	WSCH	Load	Sections	Max Enroll
Fall 2006	SOC1	100	Introduction to Sociology	120	81	0.60	12.27	368	614	3	135
		108	Community Relations	2	2	0.10	0.20	6	60	1	45
		141	Race & Ethnicity	29	22	0.20	2.90	87	435	1	45
		201	Sociology of Health & Medicine	15	13	0.20	1.50	45	225	1	45
Fall 2007	SOC1	100	Introduction to Sociology	146	113	0.60	15.05	452	753	3	135
		108	Community Relations	2	1	0.10	0.20	6	60	1	45
		110	Courtship/Marriage/Family	8	8	0.10	0.88	26	264	1	45
		141	Race & Ethnicity	19	14	0.20	1.90	57	285	1	45
Fall 2008	SOC1	100	Introduction to Sociology	144	118	0.80	14.87	446	558	4	180
		108	Community Relations	1	1	0.10	0.10	3	30	1	45
		110	Courtship/Marriage/Family	19	16	0.20	1.96	59	294	2	90
		141	Race & Ethnicity	31	22	0.20	3.10	93	465	1	45
		201	Sociology of Health & Medicine	11	9	0.20	1.10	33	165	1	45
		690	Special Projects	1	1		0.10	3		1	3
Fall 2009	SOC1	100	Introduction to Sociology	181	149	0.80	18.87	566	708	4	180
		108	Community Relations	2	2	0.10	0.20	6	60	1	45
		110	Courtship/Marriage/Family	55	46	0.20	4.75	143	713	2	145
		141	Race & Ethnicity	31	24	0.20	3.10	93	465	1	45
		160	Sociology of Sex and Gender	13	8	0.20	1.52	46	228	1	45
		201	Sociology of Health & Medicine	16	12	0.20	1.60	48	240	1	45
		432	Chinese Culture and Society	26	14	0.20	2.60	78	390	1	45
		690	Special Projects	0	0	0.00				1	3
Fall 2010	SOC1	100	Introduction to Sociology	172	125	0.80	17.56	527	659	4	180
		108	Community Relations	2	2	0.10	0.20	6	60	1	45
		110	Courtship/Marriage/Family	52	44	0.10	5.20	156	1,560	1	100
		141	Race & Ethnicity	38	22	0.20	3.80	114	570	1	45
		142	Filipina/o Community Issues	35	29	0.20	3.50	105	525	1	45
		201	Sociology of Health & Medicine	15	12	0.20	1.50	45	225	1	45
Spring 2007	SOC1	100	Intro to Sociology	28	18	0.20	2.80	84	420	1	45
			Introduction To Sociology	66	44	0.40	6.60	198	495	2	90
			Introduction to Sociology	38	29	0.20	3.80	114	570	1	45
		105	Contemporary Social Issues	13	9	0.20	1.30	39	195	1	45
		110	Courtship/Marriage/Family	8	7	0.10	0.80	24	240	1	45
		665	FYE: Research Project	4	4	0.20	0.39	12	58	1	45
Spring 2008	SOC1	100	Intro to Sociology-Honors	8	4	0.10	0.80	24	240	1	30
			Introduction To Sociology	69	47	0.40	6.90	207	518	2	90
			Introduction to Sociology	47	32	0.30	4.70	141	470	2	75
		105	Contemporary Social Issues	18	12	0.20	1.80	54	270	1	45
		110	Courtship/Marriage/Family	8	7	0.10	0.80	24	240	1	45
		141	Race & Ethnicity	40	25	0.40	4.00	120	300	2	90
Spring 2009	SOC1	100	Introduction To Sociology	84	62	0.40	8.40	252	630	2	90
			Introduction to Sociology	71	45	0.40	7.10	213	533	2	90
		105	Contemporary Social Issues	33	22	0.20	3.30	99	495	1	45
		110	Courtship/Marriage/Family	14	13	0.10	1.40	42	420	1	45
		141	Race & Ethnicity	32	17	0.20	3.20	96	480	1	45
			Race & Ethnicity-Honors	7	4	0.20	0.70	21	105	1	30

				Census Headcount	End of Term Headcount	FTEF	FTES	WSCH	Load	Sections	Max Enroll
		142	Filipina/o Community Issues	15	11	0.20	1.50	45	225	1	45
Spring 2010	SOC1	100	Introduction To Sociology	89	73	0.40	9.65	290	724	2	90
			Introduction to Sociology	93	80	0.40	9.30	279	698	2	90
		105	Contemporary Social Issues	35	30	0.20	3.50	105	525	1	45
		110	Courtship/Marriage/Family	59	54	0.20	5.90	177	885	2	145
		141	Race & Ethnicity	58	43	0.40	5.80	174	435	2	90
Spring 2011	SOC1	100	Intro to Sociology- Honors	17	9	0.20	1.98	60	298	1	30
			Introduction To Sociology	78	51	0.40	7.80	234	585	2	90
			Introduction to Sociology	109	74	0.40	10.90	327	818	2	90
		105	Contemporary Social Issues	30	22	0.20	3.00	90	450	1	45
		110	Courtship/Marriage/Family	81	76	0.20	8.10	243	1,215	2	145
		141	Race & Ethnicity	44	32	0.40	4.40	132	330	2	90
		341	Asian Cultures and Societies	25	18	0.20	2.50	75	375	1	45
Summer 2(SOCI	100	Introduction to Sociology	98	79	0.40	9.77	293	732	2	125
Summer 2007	SOC1	100	Introduction to Sociology	93	66	0.40	9.03	271	677	2	125
		690	Special Projects	5	5	0.00	0.14	4	#INF	1	7
Summer 2(SOCI	100	Introduction to Sociology	109	89	0.40	11.21	336	841	2	125
Summer 2009	SOC1	100	Introduction to Sociology	82	72	0.40	8.59	258	644	2	90
		110	Courtship/Marriage/Family	47	46	0.20	4.70	141	705	2	200
Summer 2010	SOC1	100	Introduction to Sociology	88	76	0.40	8.47	254	635	2	90
		110	Courtship/Marriage/Family	43	35	0.10	4.30	129	1,290	1	100