

## Surgical Technology Department Productivity: By Year and By Term 2006/07 through 2010/11

	Census Headcount	End of Term Headcount	FTEF	FTES	WSCH	Load	Sections	Max Enroll
2006/07	134	130	2.73	<b>53.19</b>	1,596	584	8	190
2007/08	191	190	4.11	<b>69.75</b>	2,093	510	13	263
2008/09	194	178	4.85	<b>67.40</b>	2,022	417	12	255
2009/10	108	106	3.35	<b>50.67</b>	1,520	454	6	149
2010/11	140	138	3.54	<b>64.42</b>	1,932	546	7	168

	Census Headcount	End of Term Headcount	FTEF	FTES	WSCH	Load	Sections	Max Enroll
Fall 2006	59	57	1.76	<b>25.31</b>	759	431	3	72
Fall 2007	54	54	2.01	<b>24.33</b>	730	362	4	75
Fall 2008	54	52	2.05	<b>29.87</b>	896	436	4	67
Fall 2009	42	40	1.59	<b>21.79</b>	654	412	2	50
Fall 2010	44	42	1.46	<b>23.87</b>	716	490	2	49
Spring 2007	65	63	0.94	<b>27.76</b>	833	886	4	93
Spring 2008	125	124	1.86	<b>41.08</b>	1,233	663	8	163
Spring 2009	81	69	0.87	<b>25.86</b>	776	895	4	98
Spring 2010	49	49	1.36	<b>23.91</b>	717	527	3	74
Spring 2011	77	77	1.68	<b>35.17</b>	1,055	628	4	94
Summer 2006	10	10	0.03	<b>0.12</b>	4	110	1	25
Summer 2007	12	12	0.23	<b>4.34</b>	130	558	1	25
Summer 2008	59	57	1.93	<b>11.67</b>	350	181	4	90
Summer 2009	17	17	0.40	<b>4.97</b>	149	373	1	25
Summer 2010	19	19	0.40	<b>5.37</b>	161	403	1	25

Source: SMCCCD Data Warehouse

Census Headcount: Number of duplicated headcount at final census.

End of Term Headcount: Number of duplicated headcount at the end of the term.

FTEF: Total number of full time equivalent faculty assigned.

FTES: Total number of full time equivalent students enrolled at first census.

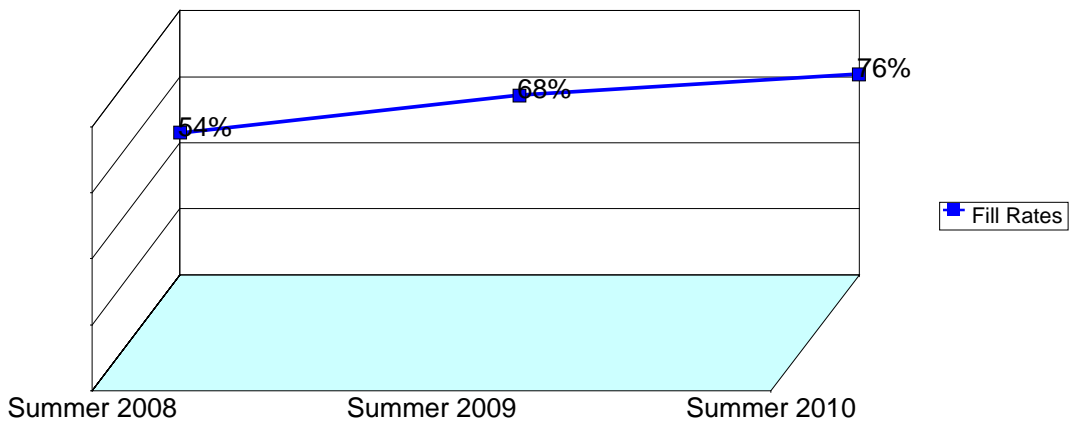
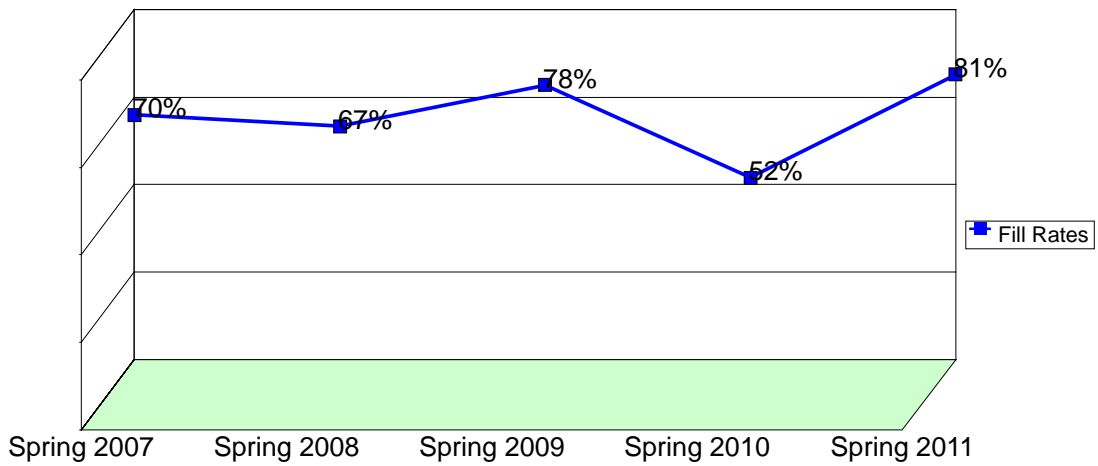
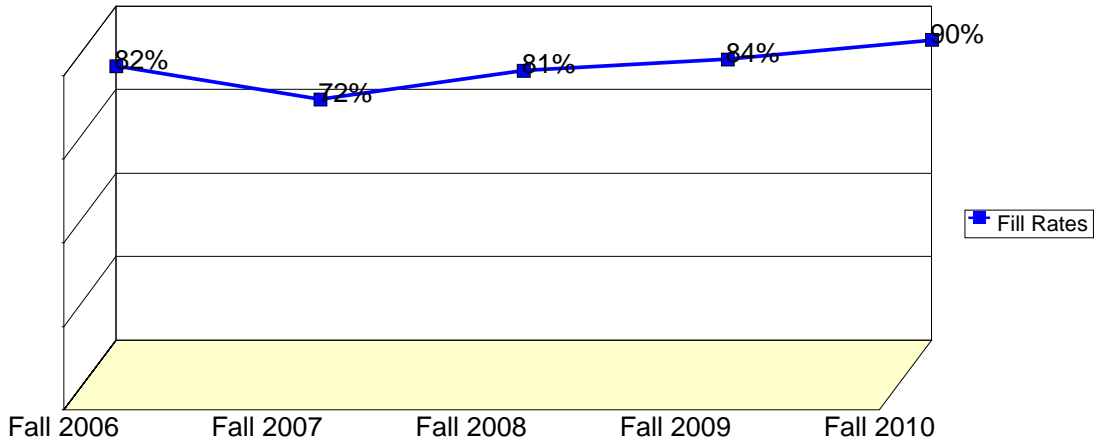
WSCH: Weekly student contact hours generated by census enrollments.

Load: The ratio of WSCH to FTEF, used to measure productivity.

Sections: Total number of sections offered per semester.

Max Enroll: The enrollment capacity or maximum enrollment as defined in curriculum.

## Department Fill Rates by Term



Source: SMCCCD Data Warehouse

Fill Rates: The percent a class fills/enrolls based on capacity or enrollment maximum defined in the curriculum (does not include positive attendance or open entry/open exit classes).

## Department Productivity: Term by Course

				Census Headcount	End of Term Headcount	FTEF	FTES	WSCH	Load	Sections	Max Enroll
<b>Fall 2006</b>	SURG	440	Basic Sciences for SURG	17	17	0.40	6.12	184	459	1	25
		441	Surgical Patient Care Concepts	17	17	1.00	14.62	439	439	1	25
		445	Intro to Central Service Tech	25	23	0.36	4.57	137	381	1	22
<b>Fall 2007</b>	SURG	440	Basic Sciences for SURG	14	14	0.40	5.04	151	378	1	25
		441	Surgical Patient Care Concepts	14	14	1.16	12.04	361	311	1	25
		445	Intro to Central Service Tech	24	24	0.45	6.88	206	455	1	23
		446	Clinical Practice for CST	2	2	0.00	0.37	11	#INF	1	2
<b>Fall 2008</b>	SURG	441	Surgical Patient Care Concepts	17	17	1.13	14.62	439	387	1	25
		442	Surgical Specialties	8	7	0.40	1.46	44	110	1	10
		443	Clinical Practice for SURG	8	7	0.07	7.77	233	3,495	1	10
		445	Intro to Central Service Tech	21	21	0.45	6.02	181	398	1	22
<b>Fall 2009</b>	SURG	441	Surgical Patient Care Concepts	17	15	1.13	14.62	439	387	1	25
		445	Intro to Central Service Tech	25	25	0.45	7.17	215	474	1	25
<b>Fall 2010</b>	SURG	441	Surgical Patient Care Concepts	20	19	0.98	17.47	524	535	1	25
		445	Intro to Central Service Tech	24	23	0.48	6.40	192	400	1	24
<b>Spring 2007</b>	SURG	442	Surgical Specialties	14	14	0.40	2.80	84	210	1	25
		443	Clinical Practice for SURG	14	14	0.20	14.93	448	2,240	1	25
		445	Intro to Central Service Tech	21	21	0.34	4.16	125	367	1	23
		446	Clinical Practice for CST	16	14	0.00	5.87	176	#INF	1	20
<b>Spring 2008</b>	SURG	442	Surgical Specialties	13	13	0.40	2.60	78	195	1	25
		443	Clinical Practice for SURG	13	13	0.20	13.87	416	2,080	1	25
		445	Intro to Central Service Tech	37	37	0.96	10.74	322	336	2	39
		446	Clinical Practice for CST	35	34	0.13	12.43	373	2,798	1	24
		665	Surgical Technology Exam Prep	4	4	0.03	0.03	1	27	1	10
		665	Certification Review-SP Techs	21	21	0.13	1.28	38	288	1	35
		690	Individual Study: Surg Tech	2	2	0.00	0.13	4	#INF	1	5
<b>Spring 2009</b>	SURG	442	Surgical Specialties	18	18	0.40	3.60	108	270	1	25
		443	Clinical Practice for SURG	18	18	0.20	18.00	540	2,700	1	25
		446	Clinical Practice for CST	23	17	0.13	2.91	87	656	1	24
		665	Certification Review-SP Techs	22	16	0.13	1.34	40	302	1	24
<b>Spring 2010</b>	SURG	442	Surgical Specialties	13	13	0.40	2.86	86	215	1	25
		443	Clinical Practice for SURG	13	13	0.40	13.87	416	1,040	1	25
		446	Clinical Practice for CST	23	23	0.56	7.18	216	385	1	24
<b>Spring 2011</b>	SURG	442	Surgical Specialties	19	19	0.40	3.99	120	299	1	25
		443	Clinical Practice for SURG	19	19	0.53	20.27	608	1,140	1	25
		445	Intro to Central Service Tech	19	19	0.48	5.07	152	317	1	20
		446	Clinical Practice for CST	20	20	0.27	5.85	176	658	1	24
<b>Summer 2(</b>	SURG	665	Review Class for Surg Techs	10	10	0.03	0.12	4	110	1	25
<b>Summer 2(</b>	SURG	446	Clinical Practice for CST	12	12	0.23	4.34	130	558	1	25
<b>Summer 2008</b>	SURG	440	Basic Sciences for SURG	27	26	0.80	5.33	160	200	2	45
		441	Surgical Patient Care Concepts	8	7	1.13	6.34	190	168	1	20
		446	Clinical Practice for CST	24	24	0.00	0.00	0		1	25
<b>Summer 2(</b>	SURG	440	Basic Sciences for SURG	17	17	0.40	4.97	149	373	1	25
<b>Summer 2(</b>	SURG	440	Basic Sciences for SURG	19	19	0.40	5.37	161	403	1	25