

Surgical Technology Department Student Characteristics 2006/07 through 2010/11

Unique Headcount by Term

FA06	FA07	FA08	FA09	FA10	SP07	SP08	SP09	SP10	SP11	SU06	SU07	SU08	SU09	SU10
42	40	46	42	44	51	100	60	40	57	10	12	51	17	19

Unique Headcount by Gender

	2006/07		2007/08		2008/09		2009/10		2010/11		Change 09/10-10/11	5 Year Row Total & Average	
Female	37	49%	55	51%	57	65%	22	47%	35	61%	59%	206	56%
Male	34	50%	61	47%	36	34%	24	53%	26	35%	8%	181	42%
Unreported	1	1%	1	2%	2	2%			2	4%		6	2%
Column Total	72	100%	117	100%	95	100%	46	100%	63	100%	37%	393	100%

Unique Headcount by Ethnicity

	2006/07		2007/08		2008/09		2009/10		2010/11		Change 09/10-10/11	5 Year Row & Average	
African American	6	8%	16	12%	8	8%	3	6%	5	7%	67%	38	8%
Asian	10	14%	15	14%	9	10%	9	15%	6	8%	-33%	49	12%
Filipino	26	41%	47	38%	34	24%	14	28%	24	35%	71%	145	32%
Hispanic	14	19%	14	12%	17	19%	5	12%	11	17%	120%	61	16%
White	14	14%	17	17%	21	31%	11	33%	9	15%	-18%	72	23%
Other			2	1%								2	0%
Unknown	2	3%	8	8%	6	8%	4	7%	8	18%	100%	28	10%
Column Total	72	100%	119	100%	95	100%	46	100%	63	100%	37%	395	100%

Unqie Headcount by Age

	2006/07		2007/08		2008/09		2009/10		2010/11		Change 09/10-10/11	5 Year Row Total & Average	
Age 18-22	8	12%	14	12%	10	10%	8	14%	13	16%	63%	53	13%
Age 23-28	18	30%	23	21%	20	17%	13	27%	22	31%	69%	96	24%
Age 29-39	20	28%	38	32%	28	32%	14	36%	16	24%	14%	116	31%
Age 40-49	18	21%	28	22%	26	31%	8	15%	10	18%	25%	90	22%
Age 50-59	9	9%	11	11%	14	11%	5	5%	6	10%	20%	45	10%
Age 60+			4	3%			1	3%			-100%	5	1%
Column Total	73	100%	118	100%	98	100%	49	100%	67	100%	37%	405	100%

Source: SMCCCD Data Warehouse

*Note: Counts and percents are based on census figures.

**Note: The variations in total numbers each year within the demographic segments are due to missing data points, and, in the case of age, also due to students crossing a category threshold during a year (18-22 in Fall, 23-28 in Spring).

Unique Headcount by Status

	2006/07		2007/08		2008/09		2009/10		2010/11		Change 09/10-10/11	5 Year Row Total & Average	
Continuing	53	68%	64	42%	64	52%	40	64%	59	68%	48%	280	57%
First-Time	7	7%	27	26%	13	11%						47	10%
First-Time Transfer	12	15%	26	22%	25	30%	12	26%	16	27%	33%	91	26%
Returning	9	7%	17	7%	7	4%	4	6%	3	3%	-25%	40	5%
Returning Transfer	4	3%	5	2%	5	3%	3	4%	2	2%	-33%	19	3%
Column Total	85	100%	139	100%	114	100%	59	100%	80	100%	36%	477	100%

Unique Headcount by Course-Taking Pattern (Fall and Spring only)

	2006/07		2007/08		2008/09		2009/10		2010/11		Change 09/10-10/11	5 Year Row Total & Average	
Day	33	43%	66	43%	71	67%	40	70%	39	65%	-3%	249	59%
Day and Evening			1	1%	9	7%			1	1%		11	2%
Evening	55	57%	74	57%	42	26%	29	30%	42	35%	45%	242	38%
Column Total	88	100%	141	100%	122	100%	69	100%	82	100%	19%	502	100%

Unique Headcount by Educational Goal

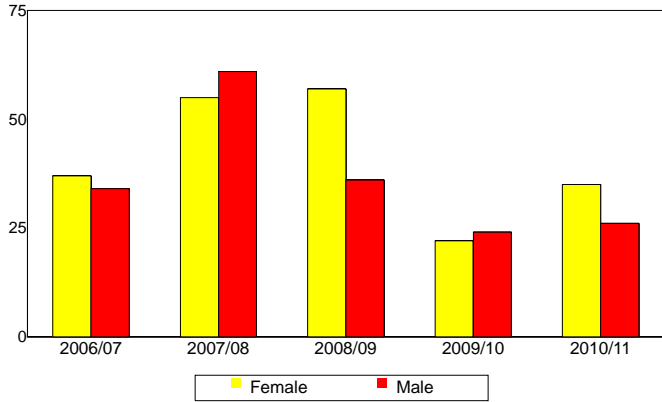
	2006/07		2007/08		2008/09		2009/10		2010/11		Change 09/10-10/11	5 Year Row Total & Average	
Transfer	37	49%	14	11%	13	14%	10	17%	20	24%	100%	94	20%
AA/AS w/o Transfer	5	8%	6	4%	3	1%	2	2%	5	9%	150%	21	4%
Certificate w/o Transfer	4	4%	16	14%	23	27%	6	18%	8	15%	33%	57	17%
Acquire/Update Job Skills	22	27%	56	47%	28	32%	14	30%	12	20%	-14%	132	32%
Educational Development	6	6%	2	1%	4	3%	3	5%	6	10%	100%	21	5%
Formulate Career Plans/Goals			1	2%								1	0%
Improve Basic Skills							1	3%			-100%	1	0%
Maintain Certificate/Licensure	1	1%	10	10%	9	6%	8	17%	5	7%	-38%	33	8%
Undecided/Unreported	5	6%	19	12%	15	16%	6	8%	11	15%	83%	56	13%
Column Total	80	100%	124	100%	95	100%	50	100%	67	100%	34%	416	100%

Source: SMCCCD Data Warehouse

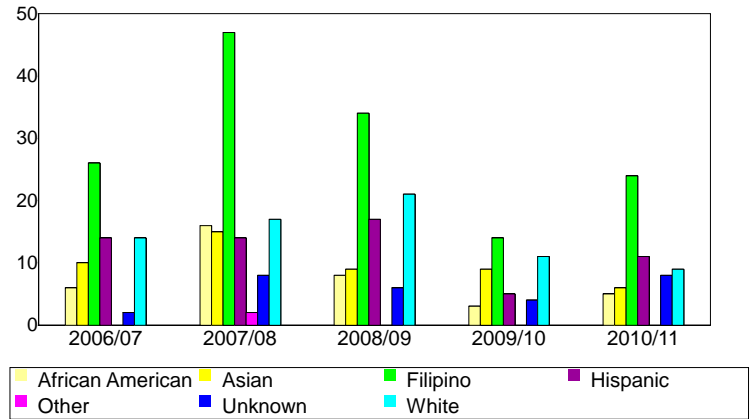
*Note: Counts and percents are based on census figures for summer, fall and spring.

**Note: The variations in total numbers each year within the Status, Course-Taking, and Educational Goal tables are due to missing data points and also due to students changing Status, Pattern, or Educational Goal within a given year - e.g. "First Time Student" in Fall and "Continuing Student" in Spring.

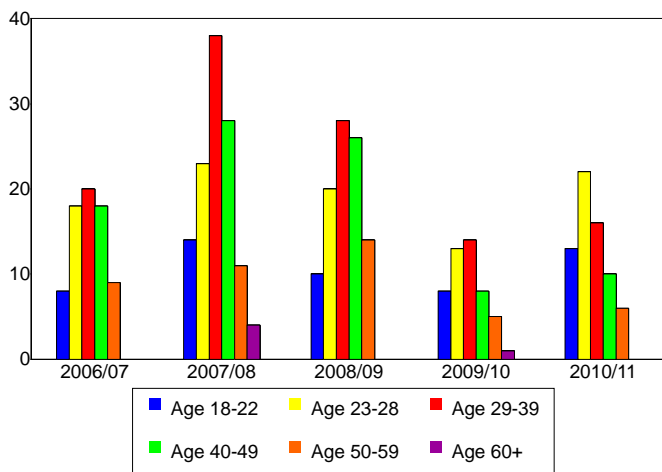
Unique Headcount by Gender



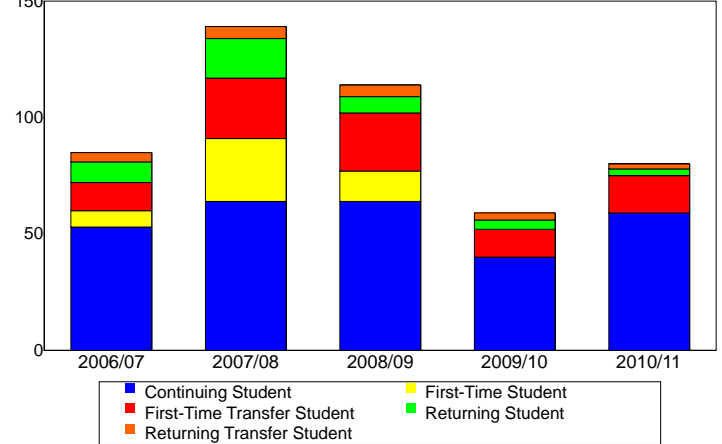
Unique Headcount by Ethnicity



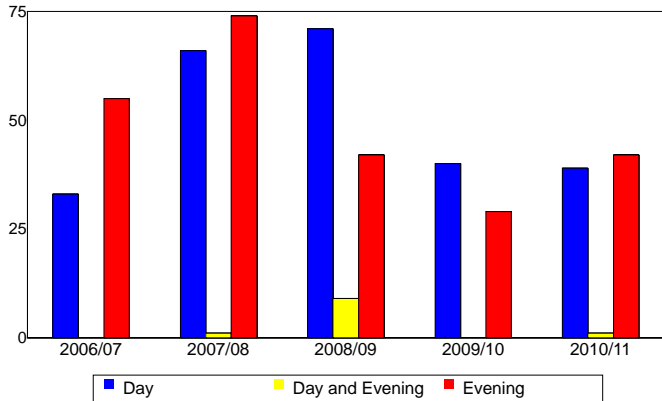
Unique Headcount by Student Age



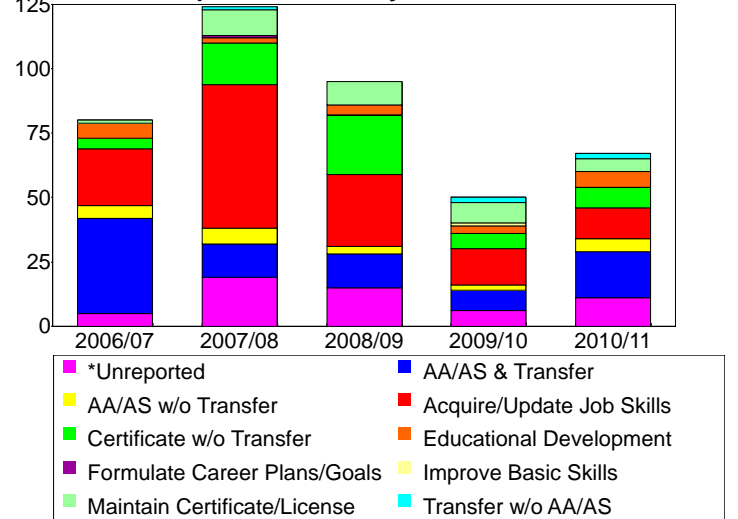
Unique Headcount by Enrollment Status



Unique Headcount by Course-Taking Pattern



Unique Headcount by Educational Goal



Source: SMCCCD Data Warehouse