

## Telecommunications Productivity: By Year and By Term 2006/07 through 2010/11

	Census Headcount	End of Term Headcount	FTEF	FTES	WSCH	Load	Sections	Max Enroll
2006/07	392	348	5.87	<b>58.60</b>	1,758	300	33	660
2007/08	434	380	6.57	<b>75.33</b>	2,260	344	30	609
2008/09	391	345	5.13	<b>62.67</b>	1,880	366	28	520
2009/10	445	392	4.71	<b>72.05</b>	2,162	459	28	516
2010/11	359	309	2.34	<b>58.43</b>	1,753	750	20	314

	Census Headcount	End of Term Headcount	FTEF	FTES	WSCH	Load	Sections	Max Enroll
Fall 2006	201	180	3.43	<b>33.87</b>	1,016	297	17	323
Fall 2007	225	201	3.59	<b>39.24</b>	1,177	328	16	322
Fall 2008	204	177	2.55	<b>33.79</b>	1,014	397	14	251
Fall 2009	198	172	2.22	<b>34.62</b>	1,039	468	13	220
Fall 2010	167	141	1.07	<b>27.06</b>	812	761	10	142
Spring 2007	191	168	2.44	<b>24.73</b>	742	304	16	337
Spring 2008	209	179	2.99	<b>36.08</b>	1,083	362	14	287
Spring 2009	165	149	2.38	<b>26.83</b>	805	338	13	245
Spring 2010	224	202	2.29	<b>35.29</b>	1,059	462	14	272
Spring 2011	192	168	1.27	<b>31.37</b>	941	741	10	172
Summer 2008	22	19	0.20	<b>2.05</b>	62	308	1	24
Summer 2009	23	18	0.20	<b>2.15</b>	64	322	1	24

Source: SMCCCD Data Warehouse

Census Headcount: Number of duplicated headcount at final census.

End of Term Headcount: Number of duplicated headcount at the end of the term.

FTEF: Total number of full time equivalent faculty assigned.

FTES: Total number of full time equivalent students enrolled at first census.

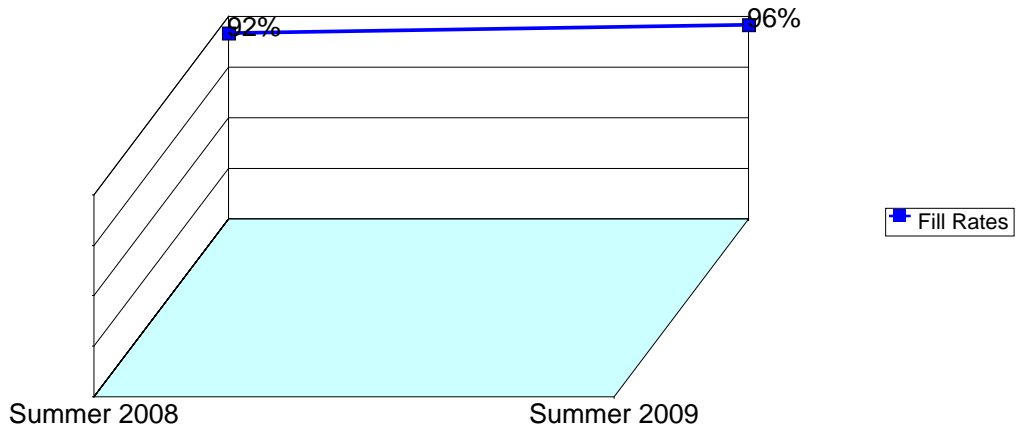
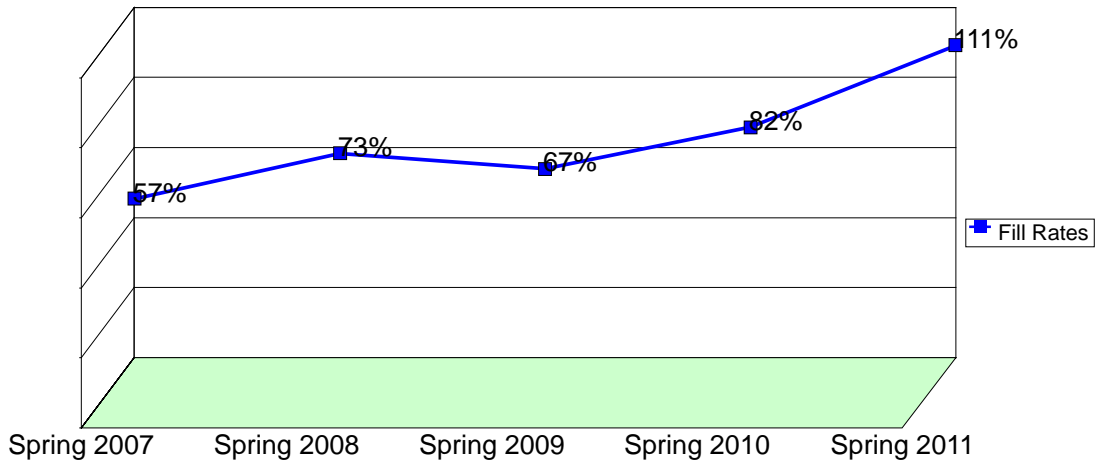
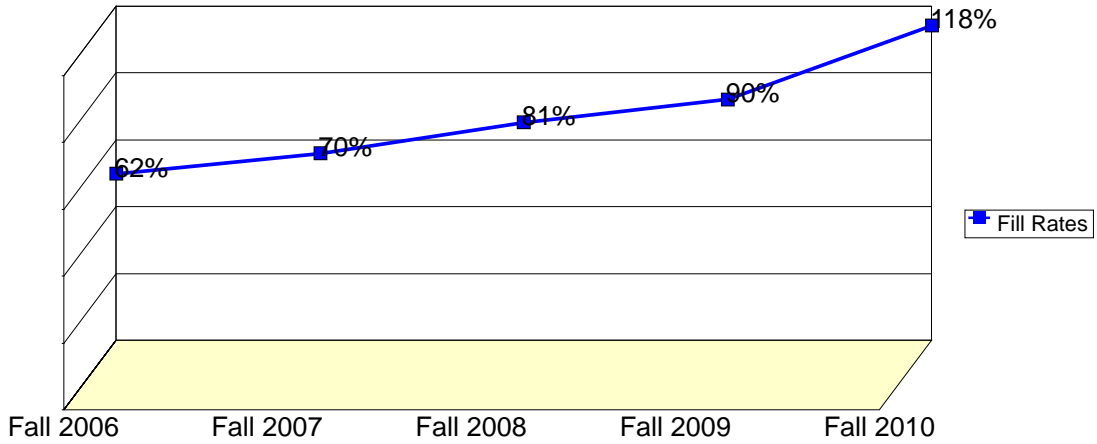
WSCH: Weekly student contact hours generated by census enrollments.

Load: The ratio of WSCH to FTEF, used to measure productivity.

Sections: Total number of sections offered per semester.

Max Enroll: The enrollment capacity or maximum enrollment as defined in curriculum.

## Department Fill Rates by Term



Source: SMCCCD Data Warehouse

Fill Rates: The percent a class fills/enrolls based on capacity or enrollment maximum defined in the curriculum (does not include positive attendance or open entry/open exit classes).

## Department Productivity: Term by Course

				Census Headcount	End of Term Headcount	FTEF	FTES	WSCH	Load	Sections	Max Enroll		
<b>Fall 2006</b>	TCOM	100	Intro. to TCOM and Networks	11	9	0.20	1.21	36	182	1	30		
		405	Electrical Fundamentals: TCOM	12	10	0.47	3.68	110	233	1	24		
		410	Installation/Wiring Practices	13	12	0.47	3.99	120	253	1	24		
		415	Wireless&Mobile Communications	12	12	0.20	1.32	40	198	1	24		
		440	Data Communications	7	6	0.47	2.15	64	136	1	24		
		451	PC Configuration and Repair	19	15	0.24	5.83	175	728	1	24		
		452	A+ Certification Exam Prep	9	8	0.07	0.30	9	135	1	24		
		480	Network Fundamentals (LAN)	31	26	0.20	4.52	136	678	2	49		
		482	Introduction to Routers	16	15	0.20	2.40	72	360	1	24		
		483	Network Switches-Concepts&Apps	14	12	0.20	2.19	66	329	1	24		
		484	Adv. Routing Concepts & Apps	8	7	0.10	0.88	26	264	1	24		
		485	TroubleshootingtheInternetnetwork	17	17	0.20	2.55	77	383	1	24		
		665	Intro Linux Admin	6	6	0.05	0.30	9	181	1	25		
			Intro to Using Linux	4	4	0.05	0.20	6	121	1	25		
			670	Tcom Work Experience	10	10	0.20	1.03	31	155	1	15	
	680	Advanced Network Sec.	12	11	0.10	1.32	40	396	1	25			
<b>Fall 2007</b>	TCOM	100	Intro. to TCOM and Networks	18	14	0.20	1.98	59	297	1	30		
		312	Installing/Using Linux-PC OS	14	13	0.05	0.88	26	526	1	25		
		314	Managing a Linux System	10	8	0.05	0.63	19	376	1	25		
		405	Electrical Fundamentals: TCOM	24	19	0.95	7.36	221	233	2	48		
		410	Installation/Wiring Practices	5	5	0.49	1.53	46	93	1	24		
		440	Data Communications	10	9	0.47	3.07	92	194	1	24		
		451	PC Configuration and Repair	14	13	0.24	4.29	129	537	1	24		
		452	A+ Certification Exam Prep	12	12	0.07	1.84	55	828	1	24		
		480	Network Fundamentals (LAN)	18	15	0.10	2.70	81	810	1	24		
		482	Introduction to Routers	23	22	0.20	3.45	104	518	1	24		
		483	Network Switches-Concepts&Apps	20	19	0.20	3.13	94	470	1	24		
		484	Adv. Routing Concepts & Apps	20	19	0.10	3.00	90	900	1	24		
		485	TroubleshootingtheInternetnetwork	15	15	0.20	2.25	68	338	1	24		
		486	Network Security	14	11	0.20	2.10	63	315	1	24		
			670	Tcom Work Experience	8	7	0.07	1.03	31	465	1	15	
<b>Fall 2008</b>	TCOM	100	Intro. to TCOM and Networks	17	15	0.20	1.70	51	255	1	30		
		312	Installing/Using Linux-PC OS	12	11	0.05	0.75	23	451	1	25		
		314	Managing a Linux System	12	12	0.05	0.75	23	451	1	25		
		405	Electrical Fundamentals: TCOM	16	15	0.47	4.91	147	311	1	24		
		410	Installation/Wiring Practices	10	7	0.47	3.40	102	216	1	24		
		451	PC Configuration and Repair	11	7	0.24	3.37	101	422	1	24		
		480	Network Fundamentals (LAN)	23	19	0.20	3.47	104	521	2	49		
		482	Introduction to Routers	22	19	0.20	3.45	103	517	1	24		
		483	Network Switches-Concepts&Apps	16	15	0.20	2.24	67	336	1	24		
		484	Adv. Routing Concepts & Apps	15	14	0.10	2.25	68	675	1	24		
		485	TroubleshootingtheInternetnetwork	26	22	0.20	3.90	117	585	1	24		
		486	Network Security	17	14	0.10	2.66	80	799	1	24		
			670	Tcom Work Experience	7	7	0.07	0.93	28	420	1	15	
		<b>Fall 2009</b>	TCOM	100	Intro. to TCOM and Networks	22	19	0.20	2.57	77	385	1	30
				405	Electrical Fundamentals: TCOM	14	12	0.47	4.29	129	272	1	24
420	Fundamentals of Signal Trans.			9	8	0.47	2.76	83	175	1	24		

			Census Headcount	End of Term Headcount	FTEF	FTES	WSCH	Load	Sections	Max Enroll	
		451	PC Configuration and Repair	13	9	0.24	3.99	120	498	1	24
		452	A+ Certification Exam Prep	12	11	0.07	1.60	48	720	1	24
		480	Network Fundamentals (LAN)	35	26	0.20	5.31	159	796	2	49
		482	Introduction to Routers	26	24	0.10	4.07	122	1,222	1	25
		483	Network Switches-Concepts&Apps	24	20	0.10	3.60	108	1,080	1	30
		484	Adv. Routing Concepts & Apps	12	12	0.10	1.88	56	564	1	24
		485	TroubleshootingtheInternetnetwork	15	15	0.10	2.35	71	705	1	30
		486	Network Security	6	6	0.10	1.00	30	300	1	24
		670	Tcom Work Experience	10	10	0.07	1.20	36	540	1	15
<b>Fall 2010</b>	TCOM	451	PC Configuration and Repair	15	13	0.23	4.60	138	591	1	24
		452	A+ Certification Exam Prep	17	13	0.07	2.72	82	1,223	1	24
		480	Network Fundamentals (LAN)	39	29	0.20	5.91	177	887	2	49
		482	Introduction to Routers	24	22	0.10	3.76	113	1,128	1	25
		483	Network Switches-Concepts&Apps	18	16	0.10	2.70	81	810	1	30
		484	Adv. Routing Concepts & Apps	17	13	0.10	1.98	60	595	1	24
		485	TroubleshootingtheInternetnetwork	21	19	0.10	3.15	95	945	1	30
		486	Network Security	6	6	0.10	1.00	30	300	1	24
		670	Tcom Work Experience	10	10	0.07	1.23	37	555	1	15
<b>Spring 2007</b>	TCOM	315	Managing Linux-Based Internet	3	3	0.05	0.33	10	198	1	25
		316	Managing Linux-Based Intra-net	1	1	0.05	0.11	3	66	1	25
		420	Signal Transmission/Radio Freq	13	11	0.47	3.90	117	247	1	24
		445	Wireless&Mobile Communications	13	13	0.20	1.30	39	195	1	25
		451	PC Configuration and Repair	9	8	0.23	2.70	81	347	1	24
		452	A+ Certification Exam Prep	19	17	0.07	0.63	19	285	1	24
		460	Fiber Optics Technology	10	10	0.20	1.00	30	150	1	24
		465	Wireless Local Area Networks	11	8	0.20	1.10	33	165	1	24
		480	Network Fundamentals (LAN)	22	16	0.10	3.15	95	946	1	30
		481	Network System Adm	16	16	0.10	2.29	69	688	1	30
		482	Introduction to Routers	18	16	0.20	3.00	90	450	1	24
		483	Network Switches-Concepts&Apps	16	15	0.20	2.13	64	320	1	30
		486	Network Security	15	12	0.10	1.50	45	450	1	30
		665	CCNA Exam Prep - I	10	9	0.10	0.53	16	160	1	25
		665	CCNA Exam Prep - II	9	9	0.10	0.48	14	144	1	25
		670	Tcom Work Experience	6	4	0.07	0.57	17	255	1	30
<b>Spring 2008</b>	TCOM	100	TCOM, Networking & Wireless	33	26	0.20	3.63	109	545	1	24
		316	Managing Linux-Based Intra-net	9	8	0.10	1.41	42	423	1	24
		405	Electrical Fund. for TCOM	7	4	0.47	2.15	64	136	1	24
		410	Installation/Wiring Practices	22	17	0.47	6.75	202	428	1	25
		420	Signal Transmission/Radio Freq	8	8	0.47	2.45	74	156	1	24
		451	PC Configuration and Repair	13	12	0.23	3.99	120	513	1	24
		452	A+ Certification Exam Prep	8	7	0.07	0.27	8	120	1	24
		480	Network Fundamentals (LAN)	18	17	0.10	2.70	81	810	1	30
		481	Advanced Local Area Network	15	13	0.10	2.10	63	630	1	24
		482	Introduction to Routers	25	18	0.20	3.50	105	525	1	24
		483	Network Switches-Concepts&Apps	14	14	0.20	1.96	59	294	1	24
		484	Routing Concepts & Apps	15	15	0.20	2.35	71	353	1	24
		486	Network Security	10	10	0.10	1.40	42	420	1	25
		670	Tcom Work Experience	12	10	0.07	1.43	43	645	1	30

				Census Headcount	End of Term Headcount	FTEF	FTES	WSCH	Load	Sections	Max Enroll
<b>Spring 2009</b>	TCOM	316	Managing Linux-Based Intra-net	8	6	0.10	1.25	38	376	1	24
		410	Installation/Wiring Practices	15	13	0.47	4.60	138	292	1	24
		415	Wireless&Mobile Communications	17	15	0.20	1.98	60	298	1	24
		440	Data Communications	6	6	0.47	1.60	48	101	1	24
		451	PC Configuration and Repair	14	13	0.23	4.29	129	552	1	24
		452	A+ Certification Exam Prep	12	11	0.07	0.40	12	180	1	24
		480	Network Fundamentals (LAN)	19	18	0.10	2.85	86	855	1	30
		481	Network System Adm	17	15	0.10	1.70	51	510	1	24
		482	Introduction to Routers	18	15	0.20	2.52	76	378	1	24
		483	Network Switches-Concepts&Apps	13	13	0.20	1.82	55	273	1	24
		484	Routing Concepts & Apps	12	11	0.10	1.88	56	564	1	24
		486	Network Security	9	9	0.10	1.26	38	378	1	24
		670	Tcom Work Experience	5	4	0.03	0.67	20	601	1	30
<b>Spring 2010</b>	TCOM	100	TCOM, Networking & Wireless	21	17	0.20	2.31	69	347	1	24
		410	Structured Wiring & Cabling	26	24	0.24	4.25	127	538	1	25
		415	Wireless&Mobile Communications	12	11	0.20	1.32	40	198	1	24
		440	Data Communications	8	7	0.47	2.45	74	156	1	24
		451	PC Configuration and Repair	13	12	0.23	3.99	120	512	1	24
		452	A+ Certification Exam Prep	16	15	0.07	2.45	74	1,103	1	24
		460	Fiber Optics Technology	16	16	0.20	1.76	53	264	1	25
		480	Network Fundamentals (LAN)	22	16	0.10	3.45	103	1,034	1	30
		481	Network System Adm	17	16	0.10	2.55	77	765	1	24
		482	Introduction to Routers	17	17	0.10	2.55	77	765	1	24
		483	Network Switches-Concepts&Apps	19	15	0.10	2.85	86	855	1	40
		484	Routing Concepts & Apps	13	13	0.10	2.17	65	650	1	24
		486	Network Security	14	13	0.10	1.96	59	588	1	24
670	Tcom Work Experience	10	10	0.08	1.23	37	463	1	30		
<b>Spring 2011</b>	TCOM	410	Structured Wiring & Cabling	32	28	0.24	5.44	163	689	1	25
		451	PC Configuration and Repair	17	13	0.23	5.21	156	670	1	24
		452	A+ Certification Exam Prep	22	18	0.07	3.52	106	1,583	1	24
		460	Fiber Optics Technology	24	19	0.20	3.36	101	504	1	24
		480	Network Fundamentals (LAN)	26	24	0.10	4.07	122	1,222	1	30
		481	Network System Adm	22	22	0.10	3.08	92	924	1	24
		482	Introduction to Routers	16	15	0.10	2.24	67	672	1	25
		483	Network Switches-Concepts&Apps	14	12	0.10	1.96	59	588	1	40
		484	Routing Concepts & Apps	12	12	0.10	1.68	50	504	1	24
		670	Tcom Work Experience	7	5	0.03	0.80	24	721	1	30
<b>Summer 2(</b>	TCOM	465	Wireless Local Area Networks	22	19	0.20	2.05	62	308	1	24
<b>Summer 2(</b>	TCOM	465	Wireless Local Area Networks	23	18	0.20	2.15	64	322	1	24