

Athletics (VARS) Department Productivity: By Year and By Term 2006/07 through 2010/11

	Census Headcount	End of Term Headcount	FTEF	FTES	WSCH	Load	Sections	Max Enroll
2006/07	209	204	4.40	57.25	1,717	390	13	419
2007/08	226	221	4.40	63.24	1,897	431	20	621
2008/09	211	204	4.40	58.40	1,752	398	20	304
2009/10	218	215	4.40	63.78	1,913	435	20	304
2010/11	228	224	4.40	63.03	1,891	430	20	304

	Census Headcount	End of Term Headcount	FTEF	FTES	WSCH	Load	Sections	Max Enroll
Fall 2006	129	124	2.70	34.71	1,041	386	6	205
Fall 2007	136	133	2.70	38.39	1,152	427	12	399
Fall 2008	136	132	2.70	38.76	1,163	431	12	195
Fall 2009	135	133	2.70	39.25	1,177	436	12	195
Fall 2010	142	139	2.70	40.97	1,229	455	12	195
Spring 2007	80	80	1.70	22.54	676	398	7	214
Spring 2008	90	88	1.70	24.86	746	439	8	222
Spring 2009	75	72	1.70	19.64	589	347	8	109
Spring 2010	83	82	1.70	24.54	736	433	8	109
Spring 2011	86	85	1.70	22.07	662	389	8	109

Source: SMCCCD Data Warehouse

Census Headcount: Number of duplicated headcount at final census.

End of Term Headcount: Number of duplicated headcount at the end of the term.

FTEF: Total number of full time equivalent faculty assigned.

FTES: Total number of full time equivalent students enrolled at first census.

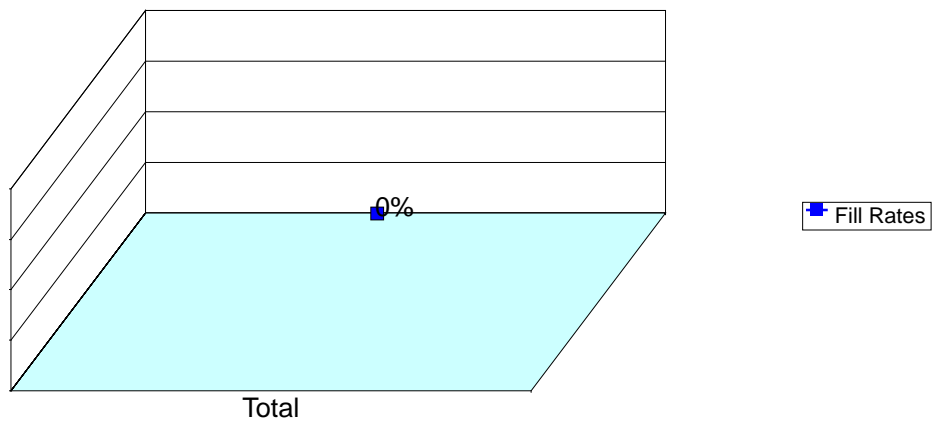
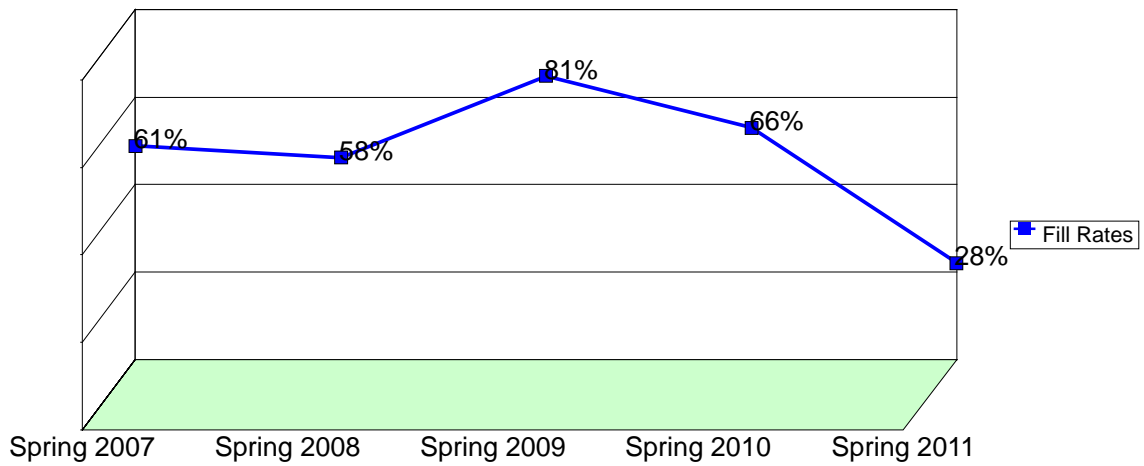
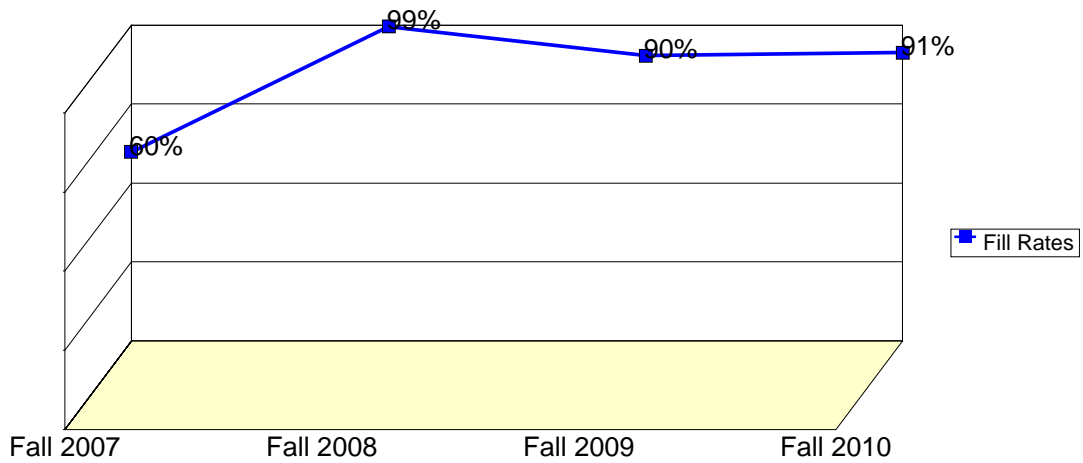
WSCH: Weekly student contact hours generated by census enrollments.

Load: The ratio of WSCH to FTEF, used to measure productivity.

Sections: Total number of sections offered per semester.

Max Enroll: The enrollment capacity or maximum enrollment as defined in curriculum.

Department Fill Rates by Term



Source: SMCCCD Data Warehouse

Fill Rates: The percent a class fills/enrolls based on capacity or enrollment maximum defined in the curriculum (does not include positive attendance or open entry/open exit classes).

Department Productivity: Term by Course

				Census Headcount	End of Term Headcount	FTEF	FTES	WSCH	Load	Sections	Max Enroll
Fall 2006	VARS	110	Varsity Basketball	19	19	0.30	3.52	105	352	1	30
		150	Varsity Men's Soccer	37	35	0.53	10.53	316	593	1	50
		200	Varsity Men's Wrestling	26	26	0.53	8.67	260	488	1	40
		300	Vars. Women's Basketball	14	13	0.30	2.44	73	244	1	25
		340	Varsity Womens Volleyball	9	9	0.50	2.23	67	134	1	30
		360	Varsity Women's Soccer	24	22	0.53	7.33	220	413	1	30
Fall 2007	VARS	110	Varsity Basketball	21	20	0.30	3.42	103	342	2	49
		150	Varsity Men's Soccer	34	33	0.53	11.33	340	638	1	50
			Varsity Soccer	1	0	0.00	0.10	3	#INF	1	50
		200	Varsity Men's Wrestling	17	17	0.53	5.67	170	319	1	40
			Varsity Wrestling	3	3	0.00	0.97	29	#INF	1	40
		300	Vars. Women's Basketball	18	18	0.30	2.95	88	295	2	50
		340	Vars. Women's Volleyball	3	3	0.00	0.97	29	#INF	1	30
			Varsity Womens Volleyball	15	15	0.50	5.00	150	300	1	30
		360	Varsity Women's Soccer	24	24	0.53	7.98	239	449	2	60
		Fall 2008	VARS	110	Varsity Basketball	16	16	0.30	2.63	79	263
150	Varsity Men's Soccer			29	28	0.53	9.66	290	543	1	50
	Varsity Soccer			6	6	0.00	2.01	60	#INF	1	50
200	Varsity Men's Wrestling			17	16	0.53	5.66	170	318	1	40
	Varsity Wrestling			6	6	0.00	2.00	60	#INF	1	40
300	Vars. Women's Basketball			21	21	0.30	3.52	105	352	2	40
340	Vars. Women's Volleyball			11	9	0.00	3.29	99	#INF	1	30
	Varsity Womens Volleyball			4	4	0.50	1.33	40	80	1	30
360	Varsity Women's Soccer			26	26	0.53	8.67	260	488	2	60
Fall 2009	VARS	110	Varsity Basketball	17	17	0.30	3.01	90	301	2	50
		150	Varsity Men's Soccer	30	30	0.53	10.00	300	563	1	50
			Varsity Soccer	10	10	0.00	3.31	99	#INF	1	50
		200	Varsity Men's Wrestling	19	18	0.53	6.30	189	354	1	40
			Varsity Wrestling	3	3	0.00	1.00	30	#INF	1	40
		300	Vars. Women's Basketball	14	14	0.30	2.32	70	232	2	40
		340	Vars. Women's Volleyball	11	11	0.00	3.34	100	#INF	1	30
			Varsity Womens Volleyball	6	6	0.50	2.00	60	120	1	30
		360	Varsity Women's Soccer	25	24	0.53	7.95	239	447	2	60
Fall 2010	VARS	110	Varsity Basketball	21	21	0.30	3.96	119	396	2	50
		150	Varsity Men's Soccer	22	22	0.53	7.33	220	413	1	50
			Varsity Soccer	6	6	0.00	2.00	60	#INF	1	50
		200	Varsity Men's Wrestling	24	24	0.53	8.00	240	450	1	40
			Varsity Wrestling	7	7	0.00	2.35	70	#INF	1	40
		300	Vars. Women's Basketball	22	22	0.30	4.34	130	434	2	40
		340	Vars. Women's Volleyball	11	11	0.00	3.65	109	#INF	1	30
			Varsity Womens Volleyball	4	4	0.50	1.33	40	80	1	30
360	Varsity Women's Soccer	25	22	0.53	8.02	240	451	2	60		
Spring 2007	VARS	100	Varsity Baseball	4	4	0.00	1.33	40	#INF	1	40
			Varsity Men's Baseball	40	40	0.60	13.33	400	667	1	40
		110	Varsity Basketball	5	5	0.00	0.83	25	#INF	1	30
			Varsity Men's Basketball	10	10	0.30	2.43	73	243	1	30
		300	Vars. Women's Basketball	12	12	0.30	2.21	66	221	2	60

			Census Headcount	End of Term Headcount	FTEF	FTES	WSCH	Load	Sections	Max Enroll		
		350	Women's Varsity Badminton	9	9	0.50	2.40	72	144	1	28	
Spring 2008	VARS	100	Varsity Baseball	5	5	0.00	1.62	49	#INF	1	40	
			Varsity Men's Baseball	40	40	0.60	13.32	400	666	1	40	
		110	Varsity Basketball	10	10	0.00	1.67	50	#INF	1	25	
				Varsity Men's Basketball	7	6	0.30	1.23	37	123	1	25
		300	Vars. Women's Basketball	14	14	0.30	2.43	73	243	2	50	
		350	Women's Varsity Badminton	14	13	0.50	4.59	138	275	2	56	
Spring 2009	VARS	100	Varsity Baseball	3	3	0.00	1.00	30	#INF	1	40	
			Varsity Men's Baseball	32	32	0.60	10.65	320	533	1	40	
		110	Varsity Basketball	7	7	0.00	1.13	34	#INF	1	25	
				Varsity Men's Basketball	8	6	0.30	1.37	41	137	1	25
		300	Vars. Women's Basketball	16	16	0.30	2.60	78	260	2	50	
		350	Women's Varsity Badminton	9	8	0.50	2.88	86	173	2	56	
Spring 2010	VARS	100	Varsity Baseball	14	14	0.00	4.67	140	#INF	1	40	
			Varsity Men's Baseball	29	28	0.60	11.12	334	556	1	40	
		110	Varsity Basketball	13	13	0.00	2.05	62	#INF	1	25	
				Varsity Men's Basketball	1	1	0.30	0.16	5	16	1	25
		300	Vars. Women's Basketball	12	12	0.30	1.87	56	187	2	50	
		350	Women's Varsity Badminton	14	14	0.50	4.67	140	280	2	56	
Spring 2011	VARS	100	Varsity Baseball	38	38	0.00	12.67	380	#INF	1	40	
			Varsity Men's Baseball	3	3	0.60	1.00	30	50	1	40	
		110	Varsity Basketball	12	12	0.00	1.74	52	#INF	1	25	
				Varsity Men's Basketball	8	8	0.30	1.16	35	116	1	25
		300	Vars. Women's Basketball	15	15	0.30	2.17	65	217	2	50	
		350	Women's Varsity Badminton	10	9	0.50	3.33	100	200	2	56	

