

## Athletics (VARS) Department Student Characteristics 2006/07 through 2010/11

### Unique Headcount by Term

FA06	FA07	FA08	FA09	FA10	SP07	SP08	SP09	SP10	SP11
129	131	135	136	142	80	89	73	83	86

### Unique Headcount by Gender

	2006/07		2007/08		2008/09		2009/10		2010/11		Change 09/10-10/11	5 Year Row Total & Average	
Female	59	32%	69	37%	68	40%	64	36%	68	38%	6%	328	37%
Male	124	67%	121	63%	109	60%	125	64%	123	62%	-2%	602	63%
Unreported	2	1%	2	0%	2	1%	2	1%	1	0%	-50%	9	1%
<b>Column Total</b>	<b>185</b>	<b>100%</b>	<b>192</b>	<b>100%</b>	<b>179</b>	<b>100%</b>	<b>191</b>	<b>100%</b>	<b>192</b>	<b>100%</b>	<b>1%</b>	<b>939</b>	<b>100%</b>

### Unique Headcount by Ethnicity

	2006/07		2007/08		2008/09		2009/10		2010/11		Change 09/10-10/11	5 Year Row Total & Average	
African American	22	15%	23	14%	19	16%	18	12%	21	13%	17%	103	14%
Asian	18	10%	15	7%	12	6%	16	7%	13	7%	-19%	74	7%
Filipino	12	8%	15	7%	13	8%	17	11%	14	8%	-18%	71	9%
Hispanic	63	32%	52	25%	53	25%	38	17%	46	22%	21%	252	24%
White	51	25%	62	30%	56	30%	63	32%	53	26%	-16%	285	29%
Other	9	5%	7	4%	3	1%	2	1%			-100%	21	2%
Unknown	10	5%	20	12%	23	13%	37	20%	45	23%	22%	135	16%
<b>Column Total</b>	<b>185</b>	<b>100%</b>	<b>194</b>	<b>100%</b>	<b>179</b>	<b>100%</b>	<b>191</b>	<b>100%</b>	<b>192</b>	<b>100%</b>	<b>1%</b>	<b>941</b>	<b>100%</b>

### Unqie Headcount by Age

	2006/07		2007/08		2008/09		2009/10		2010/11		Change 09/10-10/11	5 Year Row Total & Average	
Under 18	2	1%	1	0%	2	1%	2	1%	1	0%	-50%	8	1%
Age 18-22	165	91%	170	91%	165	95%	179	96%	172	93%	-4%	851	93%
Age 23-28	14	6%	16	7%	11	4%	9	3%	18	6%	100%	68	5%
Age 29-39	5	2%	5	2%	1	0%	1	1%	2	1%	100%	14	1%
<b>Column Total</b>	<b>186</b>	<b>100%</b>	<b>192</b>	<b>100%</b>	<b>179</b>	<b>100%</b>	<b>191</b>	<b>100%</b>	<b>193</b>	<b>100%</b>	<b>1%</b>	<b>941</b>	<b>100%</b>

Source: SMCCCD Data Warehouse

\*Note: Counts and percents are based on census figures.

\*\*Note: The variations in total numbers each year within the demographic segments are due to missing data points, and, in the case of age, also due to students crossing a category threshold during a year (18-22 in Fall, 23-28 in Spring).

### Unique Headcount by Status

	2006/07		2007/08		2008/09		2009/10		2010/11		Change 09/10-10/11	5 Year Row Total & Average	
Continuing	131	66%	151	71%	137	70%	143	73%	160	78%	12%	722	73%
Currently K-12							1	1%	2	1%	100%	3	0%
First-Time	50	24%	29	19%	32	18%	31	16%	24	11%	-23%	166	17%
First-Time Transfer	10	5%	8	5%	14	8%	15	8%	11	5%	-27%	58	6%
Returning	7	3%	9	3%	8	3%	5	2%	5	2%	0%	34	3%
Returning Transfer	2	1%	4	1%	1	0%	4	1%	5	2%	25%	16	1%
<b>Column Total</b>	<b>200</b>	<b>100%</b>	<b>201</b>	<b>100%</b>	<b>192</b>	<b>100%</b>	<b>199</b>	<b>100%</b>	<b>207</b>	<b>100%</b>	<b>4%</b>	<b>999</b>	<b>100%</b>

### Unique Headcount by Course-Taking Pattern (Fall and Spring only)

	2006/07		2007/08		2008/09		2009/10		2010/11		Change 09/10-10/11	5 Year Row Total & Average	
Day	141	80%	144	79%	127	68%	133	62%	129	57%	-3%	674	67%
Day and Evening			4	2%	1	1%						5	0%
Evening	44	20%	46	20%	67	31%	85	38%	99	43%	16%	341	32%
<b>Column Total</b>	<b>185</b>	<b>100%</b>	<b>194</b>	<b>100%</b>	<b>195</b>	<b>100%</b>	<b>218</b>	<b>100%</b>	<b>228</b>	<b>100%</b>	<b>5%</b>	<b>1,020</b>	<b>100%</b>

### Unique Headcount by Educational Goal

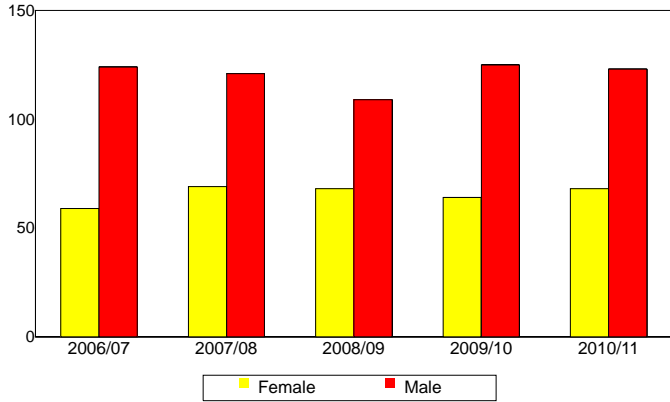
	2006/07		2007/08		2008/09		2009/10		2010/11		Change 09/10-10/11	5 Year Row Total & Average	
Transfer	148	77%	112	59%	121	67%	138	74%	137	70%	-1%	656	69%
AA/AS w/o Transfer	5	2%	7	4%	5	3%	8	4%	5	2%	-38%	30	3%
Certificate w/o Transfer	1	0%	2	1%					1	0%		4	0%
Acquire/Update Job Skills	3	2%	5	3%	1	1%	2	1%	1	0%	-50%	12	1%
Complete HS Credits			1	0%			5	3%	2	1%	-60%	8	1%
Educational Development	4	3%	7	4%	9	6%	4	2%	10	7%	150%	34	5%
Formulate Career Plans/Goals			4	3%	4	3%	3	2%			-100%	11	1%
Maintain Certificate/Licensure									1	0%		1	0%
Undecided/Unreported	27	15%	57	27%	40	21%	32	16%	38	19%	19%	194	20%
<b>Column Total</b>	<b>188</b>	<b>100%</b>	<b>195</b>	<b>100%</b>	<b>180</b>	<b>100%</b>	<b>192</b>	<b>100%</b>	<b>195</b>	<b>100%</b>	<b>2%</b>	<b>950</b>	<b>100%</b>

Source: SMCCCD Data Warehouse

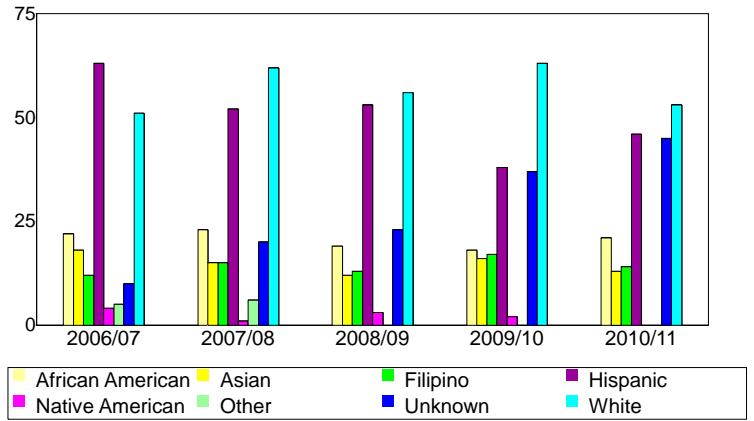
\*Note: Counts and percents are based on census figures for summer, fall and spring.

\*\*Note: The variations in total numbers each year within the Status, Course-Taking, and Educational Goal tables are due to missing data points and also due to students changing Status, Pattern, or Educational Goal within a given year - e.g. "First Time Student" in Fall and "Continuing Student" in Spring.

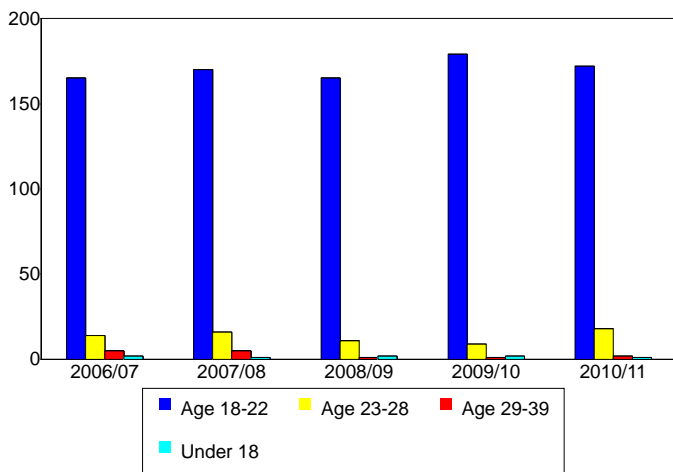
**Unique Headcount by Gender**



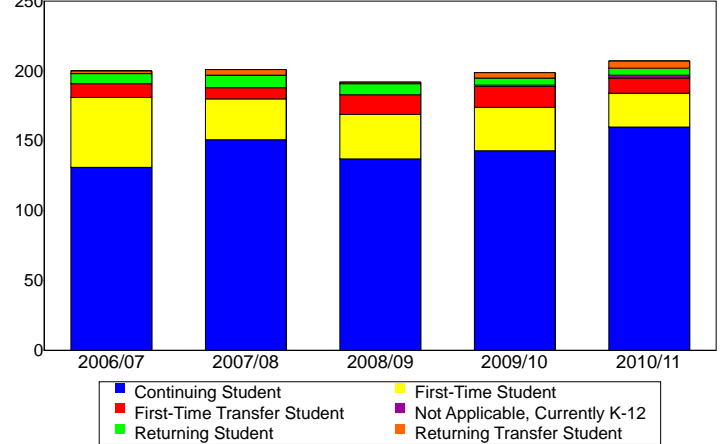
**Unique Headcount by Ethnicity**



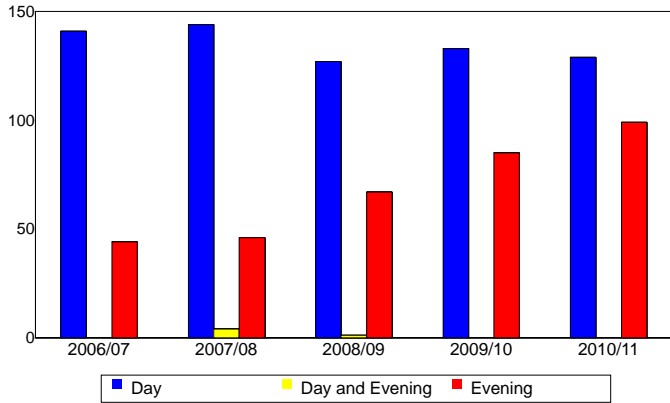
**Unique Headcount by Student Age**



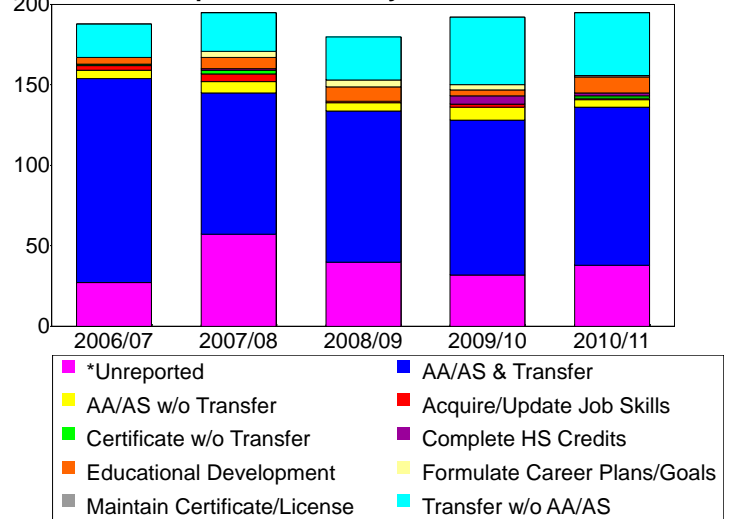
**Unique Headcount by Enrollment Status**



**Unique Headcount by Course-Taking Pattern**



**Unique Headcount by Educational Goal**



Source: SMCCCD Data Warehouse