

## Department Productivity: By Year and By Term

	Census Headcount	End of Term Headcount	FTEF	FTES	WSCH	Load	Sections	Max Enroll
2003/04	417	336	2.00	42.07	1,262	631	11	439
2004/05	402	353	2.20	39.92	1,198	544	12	473
2005/06	369	298	2.50	36.48	1,095	438	14	539
2006/07	474	395	3.00	47.42	1,423	474	16	643
2007/08	453	339	2.80	45.96	1,379	492	14	607

	Census Headcount	End of Term Headcount	FTEF	FTES	WSCH	Load	Sections	Max Enroll
Fall 2003	216	179	1.00	21.97	659	659	5	215
Fall 2004	153	139	1.00	15.46	464	464	6	208
Fall 2005	166	133	1.10	16.36	491	446	7	246
Fall 2006	227	190	1.20	22.99	690	575	7	260
Fall 2007	192	136	1.20	19.43	583	486	6	247
Spring 2004	201	157	1.00	20.10	603	603	6	224
Spring 2005	198	167	1.00	19.80	594	594	5	220
Spring 2006	173	138	1.20	17.30	519	433	6	248
Spring 2007	171	133	1.20	17.10	513	428	6	248
Spring 2008	169	127	1.00	17.29	519	519	5	225
Summer 2004	51	47	0.20	4.66	140	699	1	45
Summer 2005	30	27	0.20	2.83	85	424	1	45
Summer 2006	76	72	0.60	7.33	220	367	3	135
Summer 2007	92	76	0.60	9.24	277	462	3	135

Source: SMCCCD Data Warehouse

Census Headcount: Number of duplicated headcount at final census.

End of Term Headcount: Number of duplicated headcount at the end of the term.

FTEF: Total number of full time equivalent faculty assigned.

FTES: Total number of full time equivalent students enrolled at first census.

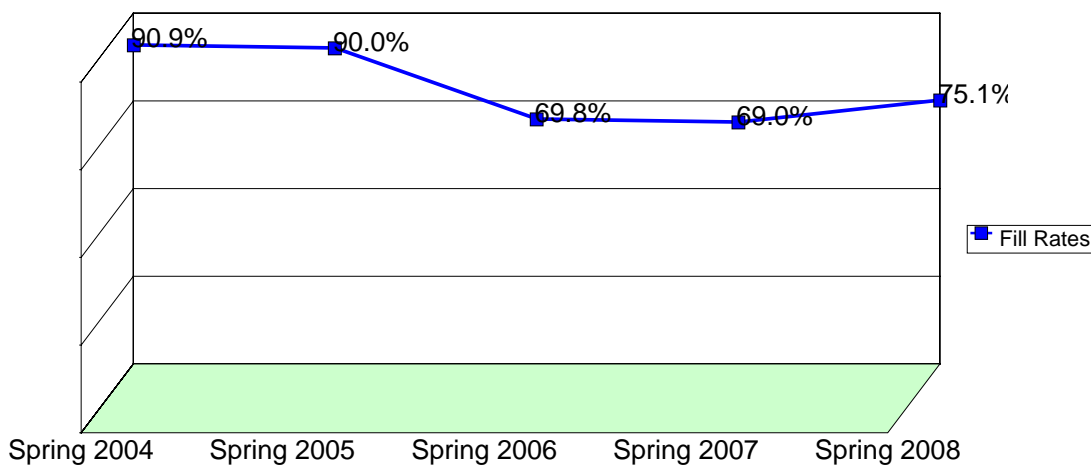
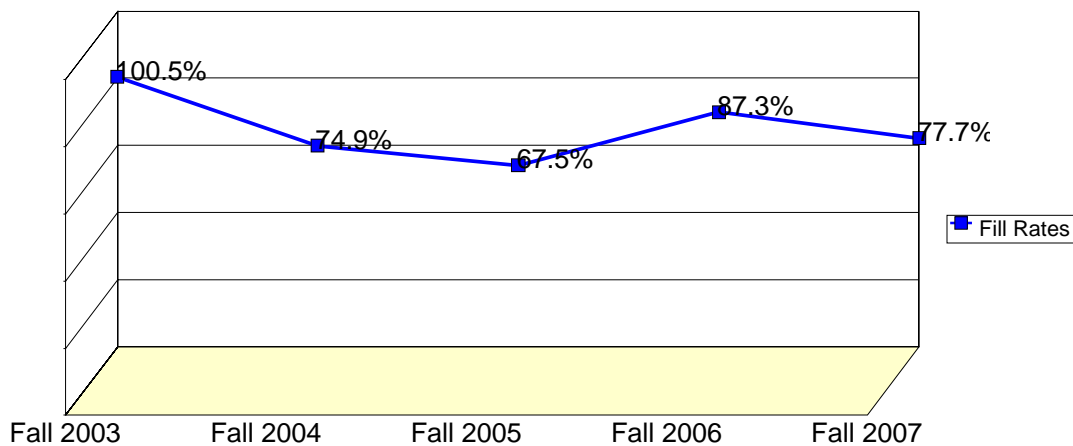
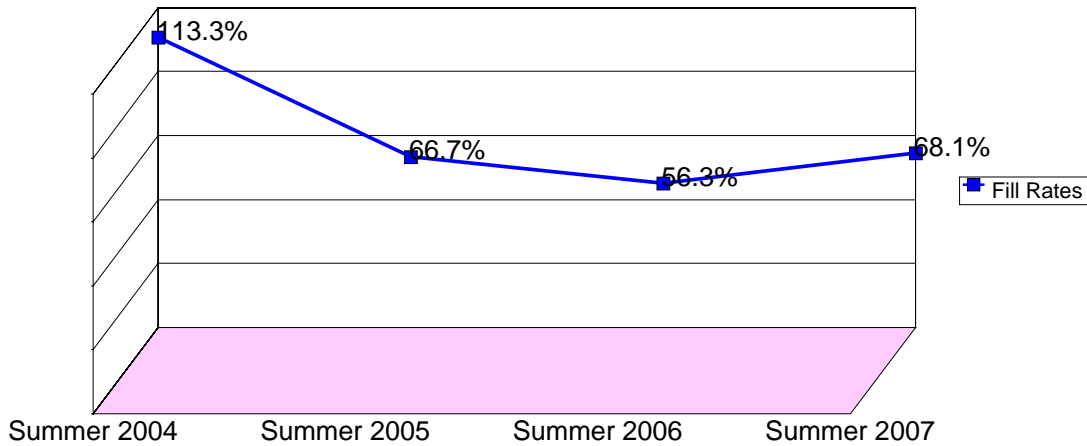
WSCH: Weekly student contact hours generated by census enrollments.

Load: The ratio of WSCH to FTEF, used to measure productivity.

Sections: Total number of sections offered per semester.

Max Enroll: The enrollment capacity or maximum enrollment as defined in curriculum.

## Department Fill Rates by Term



Source: SMCCCD Data Warehouse

\*Note: For a list of courses included in this report, see Department Productivity: Term by Course. Interdepartmental crosslisted courses are included in fill rate figures only. Crosslisted courses have been combined to calculate a single fill rate.

Fill Rates: The percent a class fills/enrolls based on capacity or enrollment maximum defined in the curriculum (does not include positive attendance, open entry/open exit, or independent study classes).

## Department Productivity: Term by Course

				Census Headcount	End of Term Headcount	FTEF	FTES	WSCH	Load	Sections	Max Enroll
<b>Fall 2003</b>	ANTH	110 Cultural Anthropology		76	63	0.40	7.97	239	598	2	85
		125 Physical Anthropology		56	47	0.20	5.60	168	840	1	40
		155 Human Prehistory/Rise of Civil		42	34	0.20	4.20	126	630	1	45
		360 Native Peoples of N. America		42	35	0.20	4.20	126	630	1	45
<b>Fall 2004</b>	ANTH	110 Cultural Anthropology		45	43	0.20	4.50	135	675	1	45
		Cultural Anthropology - Honors		26	24	0.20	2.60	78	390	1	28
	125 Physical Anthropology		42	41	0.20	4.20	126	630	1	40	
	155 Human Prehistory/Rise of Civil		16	12	0.20	1.76	53	264	1	45	
	360 Native Peoples of N. America		23	18	0.20	2.30	69	345	1	45	
	690 Special Projects		1	1	0.00	0.10	3	#INF	1	5	
<b>Fall 2005</b>	ANTH	110 Cultural Anthropology		67	55	0.40	6.91	207	518	2	90
		125 Physical Anthropology		36	30	0.20	3.96	119	594	1	40
		165 Cross Cultural Sex & Gender		23	18	0.20	2.30	69	345	1	45
		680 Anthropology of Death		15	12	0.10	0.69	21	206	1	45
	ZM ANTH	125 Physical Anthropology		10	8	0.10	1.00	30	300	1	26
	Physical Anthropology - Honors		15	10	0.10	1.50	45	450	1	26	
<b>Fall 2006</b>	ANTH	110 Cultural Anthropology		114	100	0.60	11.69	351	584	3	135
		165 Cross Cultural Sex & Gender		36	29	0.20	3.60	108	540	1	45
		180 Magic, Science & Religion		42	31	0.20	4.20	126	630	1	45
	ZM ANTH	125 Physical Anthropology		29	25	0.10	2.90	87	870	1	35
	Physical Anthropology - Honors		6	5	0.10	0.60	18	180	1	35	
<b>Fall 2007</b>	ANTH	110 Cultural Anthropology		66	51	0.40	6.83	205	512	2	90
		Cultural Anthropology-Honors		25	16	0.20	2.50	75	375	1	32
	125 Physical Anthropology		43	34	0.20	4.30	129	645	1	35	
	165 Cross Cultural Sex & Gender		18	12	0.20	1.80	54	270	1	45	
	180 Magic, Science & Religion		40	23	0.20	4.00	120	600	1	45	
<b>Spring 2004</b>	ANTH	110 Cultural Anthropology		83	63	0.40	8.30	249	623	2	90
		125 Physical Anthropology		47	40	0.20	4.70	141	705	1	40
	150 Introduction to Archaeology:		29	22	0.20	2.90	87	435	1	45	
	180 Magic, Witchcraft & Religion		41	31	0.20	4.10	123	615	1	45	
	690 Special Projects		1	1	0.00	0.10	3	#INF	1	4	
<b>Spring 2005</b>	ANTH	110 Cultural Anthropology		76	67	0.40	7.60	228	570	2	90
		125 Physical Anthropology		52	46	0.20	5.20	156	780	1	40
		150 Introduction to Archaeology:		21	17	0.20	2.10	63	315	1	45
		180 Magic, Witchcraft & Religion		49	37	0.20	4.90	147	735	1	45
<b>Spring 2006</b>	ANTH	110 Cultural Anthropology		74	60	0.40	7.40	222	555	2	90
		Cultural Anthropology-Honors		14	10	0.20	1.40	42	210	1	28
	125 Physical Anthropology		45	40	0.20	4.50	135	675	1	40	
	150 Introduction to Archaeology:		14	9	0.20	1.40	42	210	1	45	
	360 Indians Of North America		26	19	0.20	2.60	78	390	1	45	
<b>Spring 2007</b>	ANTH	110 Cultural Anthropology		79	61	0.40	7.90	237	593	2	90
		Cultural Anthropology-Honors		16	14	0.20	1.60	48	240	1	28
	125 Physical Anthropology		45	37	0.20	4.50	135	675	1	40	
	150 Introduction to Archaeology:		14	9	0.20	1.40	42	210	1	45	

			<b>Census Headcount</b>	<b>End of Term Headcount</b>	<b>FTEF</b>	<b>FTES</b>	<b>WSCH</b>	<b>Load</b>	<b>Sections</b>	<b>Max Enroll</b>	
		360	Indians Of North America	17	12	0.20	1.70	51	255	1	45
<b>Spring 2008</b>	ANTH	110	Cultural Anthropology	72	53	0.40	7.20	216	540	2	90
		125	Physical Anthropology	82	61	0.40	8.59	258	644	2	90
		150	Introduction to Archaeology:	15	13	0.20	1.50	45	225	1	45
<b>Summer 2004</b>	ANTH	110	Cultural Anthropology	51	47	0.20	4.66	140	699	1	45
<b>Summer 2005</b>	ANTH	110	Cultural Anthropology	30	27	0.20	2.83	85	424	1	45
<b>Summer 2006</b>	ANTH	110	Cultural Anthropology	59	56	0.40	5.73	172	430	2	90
		180	Magic, Witchcraft & Religion	17	16	0.20	1.60	48	240	1	45
<b>Summer 2007</b>	ANTH	110	Cultural Anthropology	63	53	0.40	6.09	183	456	2	90
		125	Physical Anthropology	29	23	0.20	3.15	94	472	1	45

Source: SMCCCD Data Warehouse

\*Note: Courses are sorted by crosslist group code. Interdepartmental crosslisted courses are included in fill rate figures only.

- Census Headcount: Number of duplicated headcount at final census.
- End of Term Headcount: Number of duplicated headcount at the end of the term.
- FTEF: Total number of full time equivalent faculty assigned.
- FTES: Total number of full time equivalent students enrolled at first census.
- WSCH: Weekly student contact hours generated by census enrollments.
- Load: The ratio of WSCH to FTEF, used to measure productivity.
- Sections: Total number of sections offered per semester.
- Max Enroll: The enrollment capacity or maximum enrollment as defined in curriculum.