

## Department Success and Retention

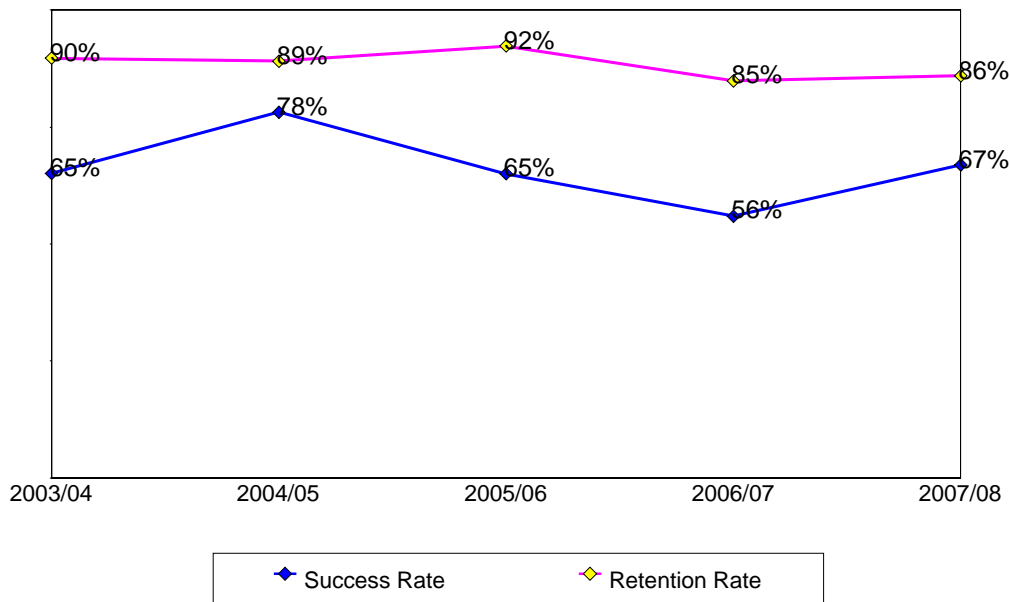
This report contains success and retention rates by various demographic segments and by course. Annual data are an aggregate of the fall and spring semesters. The following parameters have been applied:

- Success Counts: Number of students with A,B,C,CR grades.
- Success Rate: The percentage of students who complete a course with a grade of A,B,C,CR out of total enrollments.
- Retention Counts: Number of students with A,B,C,D,F,CR,NC, I grades.
- Retention Rate: The percentage of students who complete a course with a grade of A,B,C,D,F,CR,NC, I out of total headcount.

### Annual Success and Retention

	Headcount	Success Count	Success Rate	Retention Count	Retention Rate
2003/04	195	127	65%	175	90%
2004/05	165	129	78%	147	89%
2005/06	143	93	65%	132	92%
2006/07	159	89	56%	135	85%
2007/08	121	81	67%	104	86%
Change from 2006/07 to 2007/08	-38	-8	11%	-31	1%
<b>Totals &amp; Averages</b>	<b>783</b>	<b>519</b>	<b>66%</b>	<b>693</b>	<b>89%</b>

Annual (Fall/Spring) Success and Retention Rates



Source: SMCCCD Data Warehouse

**Success and Retention By Term**

	<b>Headcount</b>	<b>Success Count</b>	<b>Success Rate</b>	<b>Retention Count</b>	<b>Retention Rate</b>
Fall 2003	95	62	<b>65%</b>	85	<b>89%</b>
Fall 2004	82	69	<b>84%</b>	74	<b>90%</b>
Fall 2005	67	43	<b>64%</b>	62	<b>93%</b>
Fall 2006	77	37	<b>48%</b>	66	<b>86%</b>
Fall 2007	38	29	<b>76%</b>	33	<b>87%</b>
Spring 2004	100	65	<b>65%</b>	90	<b>90%</b>
Spring 2005	83	60	<b>72%</b>	73	<b>88%</b>
Spring 2006	76	50	<b>66%</b>	70	<b>92%</b>
Spring 2007	82	52	<b>63%</b>	69	<b>84%</b>
Spring 2008	83	52	<b>63%</b>	71	<b>86%</b>
<b>Totals &amp; Averages</b>	<b>783</b>	<b>519</b>	<b>66%</b>	<b>693</b>	<b>89%</b>

**Grade Distribution**

	<b>A</b>		<b>B</b>		<b>C</b>		<b>D</b>		<b>F</b>		<b>W</b>	
Fall 2003	31	38%	14	17%	8	8%	4	5%	16	22%	10	10%
Fall 2004	28	36%	18	27%	18	21%	1	0%	4	5%	8	11%
Fall 2005	16	28%	16	21%	9	13%	4	7%	14	23%	5	8%
Fall 2006	18	21%	9	12%	9	12%	12	17%	17	23%	11	14%
Fall 2007	12	29%	10	31%	6	14%			4	13%	5	14%
Spring 2004	24	28%	14	17%	21	20%	4	2%	18	22%	10	11%
Spring 2005	17	20%	20	26%	18	26%	5	6%	8	10%	10	12%
Spring 2006	16	20%	10	14%	22	31%	6	9%	14	20%	6	6%
Spring 2007	17	20%	17	21%	18	19%	2	2%	15	19%	13	18%
Spring 2008	15	19%	18	23%	14	18%	6	9%	10	13%	10	18%

Source: SMCCCD Data Warehouse

**Success and Retention by Ethnicity**

		Headcount	Success Count	Success Rate	Retention Count	Retention Rate
2003/04	African American	23	4	17%	20	87%
	Asian	39	32	82%	34	87%
	Filipino	35	21	60%	31	89%
	Hispanic	30	18	60%	25	83%
	Other	10	6	60%	10	100%
	White	51	41	80%	48	94%
	Unreported	7	5	71%	7	100%
	<b>Totals &amp; Averages</b>	<b>195</b>	<b>127</b>	<b>65%</b>	<b>175</b>	<b>90%</b>
2004/05	African American	10	5	50%	8	80%
	Asian	42	36	86%	38	90%
	Filipino	33	24	73%	27	82%
	Hispanic	29	22	76%	28	97%
	Native American	1	1	100%	1	100%
	Other	6	5	83%	5	83%
	White	38	31	82%	35	92%
	Unreported	6	5	83%	5	83%
<b>Totals &amp; Averages</b>	<b>165</b>	<b>129</b>	<b>78%</b>	<b>147</b>	<b>89%</b>	
2005/06	African American	6	3	50%	6	100%
	Asian	27	16	59%	23	85%
	Filipino	33	21	64%	32	97%
	Hispanic	35	25	71%	31	89%
	Native American	1	1	100%	1	100%
	Other	6	5	83%	6	100%
	White	26	16	62%	24	92%
	Unreported	9	6	67%	9	100%
<b>Totals &amp; Averages</b>	<b>143</b>	<b>93</b>	<b>65%</b>	<b>132</b>	<b>92%</b>	
2006/07	African American	20	8	40%	17	85%
	Asian	33	19	58%	27	82%
	Filipino	32	17	53%	26	81%
	Hispanic	27	16	59%	23	85%
	Native American	1			1	100%
	Other	2	1	50%	1	50%
	White	37	23	62%	33	89%
	Unreported	7	5	71%	7	100%
<b>Totals &amp; Averages</b>	<b>159</b>	<b>89</b>	<b>56%</b>	<b>135</b>	<b>85%</b>	
2007/08	African American	4	4	100%	4	100%
	Asian	18	12	67%	16	89%
	Filipino	27	16	59%	22	81%
	Hispanic	32	19	59%	28	88%
	Other	2	2	100%	2	100%
	White	26	22	85%	24	92%
	Unreported	12	6	50%	8	67%
	<b>Totals &amp; Averages</b>	<b>121</b>	<b>81</b>	<b>67%</b>	<b>104</b>	<b>86%</b>

Source: SMCCCD Data Warehouse

**Success and Retention by Gender**

		Headcount	Success Count	Success Rate	Retention Count	Retention Rate
2003/04	Female	129	95	74%	120	93%
	Male	66	32	48%	55	83%
	<b>Totals &amp; Averages</b>	195	127	65%	175	90%
2004/05	Female	129	102	79%	116	90%
	Male	32	23	72%	27	84%
	Unreported	2	2	100%	2	100%
	<b>Totals &amp; Averages</b>	163	127	78%	145	89%
2005/06	Female	107	74	69%	96	90%
	Male	32	17	53%	32	100%
	Unreported	2	1	50%	2	100%
	<b>Totals &amp; Averages</b>	141	92	65%	130	92%
2006/07	Female	122	73	60%	102	84%
	Male	36	15	42%	32	89%
	<b>Totals &amp; Averages</b>	158	88	56%	134	85%
2007/08	Female	95	72	76%	86	91%
	Male	26	9	35%	18	69%
	<b>Totals &amp; Averages</b>	121	81	67%	104	86%

**Success and Retention by Day/Evening Status**

		Headcount	Success Count	Success Rate	Retention Count	Retention Rate
2003/04	Day	133	80	60%	124	93%
	Evening	62	47	76%	51	82%
2004/05	Day	120	91	76%	104	87%
	Evening	45	38	84%	43	96%
2005/06	Day	103	64	62%	94	91%
	Evening	40	29	73%	38	95%
2006/07	Day	118	54	46%	97	82%
	Evening	41	35	85%	38	93%
2007/08	Day	94	60	64%	80	85%
	Evening	27	21	78%	24	89%

Source: SMCCCD Data Warehouse

**Success and Retention by Age**

		<b>Headcount</b>	<b>Success Count</b>	<b>Success Rate</b>	<b>Retention Count</b>	<b>Retention Rate</b>
2003/04	Under 18	5	5	<b>100%</b>	5	<b>100%</b>
	Age 18-22	138	81	<b>59%</b>	124	<b>90%</b>
	Age 23-28	35	27	<b>77%</b>	31	<b>89%</b>
	Age 29-39	11	9	<b>82%</b>	10	<b>91%</b>
	Age 40-49	4	3	<b>75%</b>	3	<b>75%</b>
	Age 50-59	1	1	<b>100%</b>	1	<b>100%</b>
	Age 60+	1	1	<b>100%</b>	1	<b>100%</b>
	<b>Totals &amp; Averages</b>	195	127	<b>65%</b>	175	<b>90%</b>
2004/05	Under 18	2	2	<b>100%</b>	2	<b>100%</b>
	Age 18-22	121	93	<b>77%</b>	109	<b>90%</b>
	Age 23-28	31	27	<b>87%</b>	28	<b>90%</b>
	Age 29-39	7	5	<b>71%</b>	6	<b>86%</b>
	Age 40-49	3	2	<b>67%</b>	2	<b>67%</b>
	Age 50-59	1				
		<b>Totals &amp; Averages</b>	165	129	<b>78%</b>	147
2005/06	Under 18	3	2	<b>67%</b>	3	<b>100%</b>
	Age 18-22	100	64	<b>64%</b>	95	<b>95%</b>
	Age 23-28	30	20	<b>67%</b>	24	<b>80%</b>
	Age 29-39	5	2	<b>40%</b>	5	<b>100%</b>
	Age 40-49	4	4	<b>100%</b>	4	<b>100%</b>
	Age 50-59	1	1	<b>100%</b>	1	<b>100%</b>
		<b>Totals &amp; Averages</b>	143	93	<b>65%</b>	132
2006/07	Under 18	3	3	<b>100%</b>	3	<b>100%</b>
	Age 18-22	126	65	<b>52%</b>	105	<b>83%</b>
	Age 23-28	19	12	<b>63%</b>	17	<b>89%</b>
	Age 29-39	2	1	<b>50%</b>	2	<b>100%</b>
	Age 40-49	7	6	<b>86%</b>	6	<b>86%</b>
	Age 50-59	2	2	<b>100%</b>	2	<b>100%</b>
		<b>Totals &amp; Averages</b>	159	89	<b>56%</b>	135
2007/08	Age 18-22	82	54	<b>66%</b>	68	<b>83%</b>
	Age 23-28	29	19	<b>66%</b>	26	<b>90%</b>
	Age 29-39	7	5	<b>71%</b>	7	<b>100%</b>
	Age 40-49	2	2	<b>100%</b>	2	<b>100%</b>
	Age 50-59	1	1	<b>100%</b>	1	<b>100%</b>
		<b>Totals &amp; Averages</b>	121	81	<b>67%</b>	104

Source: SMCCCD Data Warehouse

**Success and Retention by Enrollment Status**

		<b>Headcount</b>	<b>Success Count</b>	<b>Success Rate</b>	<b>Retention Count</b>	<b>Retention Rate</b>
2003/04	Continuing Student	128	93	<b>73%</b>	117	<b>91%</b>
	First-Time Student	27	9	<b>33%</b>	24	<b>89%</b>
	First-Time Transfer Student	20	9	<b>45%</b>	16	<b>80%</b>
	Returning Student	15	12	<b>80%</b>	14	<b>93%</b>
	Returning Transfer Student	5	4	<b>80%</b>	4	<b>80%</b>
2004/05	Continuing Student	115	90	<b>78%</b>	103	<b>90%</b>
	First-Time Student	15	11	<b>73%</b>	13	<b>87%</b>
	First-Time Transfer Student	10	6	<b>60%</b>	9	<b>90%</b>
	Returning Student	14	11	<b>79%</b>	11	<b>79%</b>
	Returning Transfer Student	11	11	<b>100%</b>	11	<b>100%</b>
2005/06	Continuing Student	108	74	<b>69%</b>	99	<b>92%</b>
	First-Time Student	12	8	<b>67%</b>	12	<b>100%</b>
	First-Time Transfer Student	12	6	<b>50%</b>	12	<b>100%</b>
	Returning Student	10	4	<b>40%</b>	8	<b>80%</b>
	Returning Transfer Student	1	1	<b>100%</b>	1	<b>100%</b>
2006/07	Continuing Student	113	68	<b>60%</b>	100	<b>88%</b>
	Currently K-12	1	1	<b>100%</b>	1	<b>100%</b>
	First-Time Student	18	3	<b>17%</b>	11	<b>61%</b>
	First-Time Transfer Student	18	11	<b>61%</b>	15	<b>83%</b>
	Returning Student	7	5	<b>71%</b>	6	<b>86%</b>
	Returning Transfer Student	2	1	<b>50%</b>	2	<b>100%</b>
2007/08	Continuing Student	83	57	<b>69%</b>	74	<b>89%</b>
	First-Time Student	10	6	<b>60%</b>	7	<b>70%</b>
	First-Time Transfer Student	14	10	<b>71%</b>	10	<b>71%</b>
	Returning Student	10	5	<b>50%</b>	9	<b>90%</b>
	Returning Transfer Student	4	3	<b>75%</b>	4	<b>100%</b>

Source: SMCCCD Data Warehouse