

Department Success and Retention

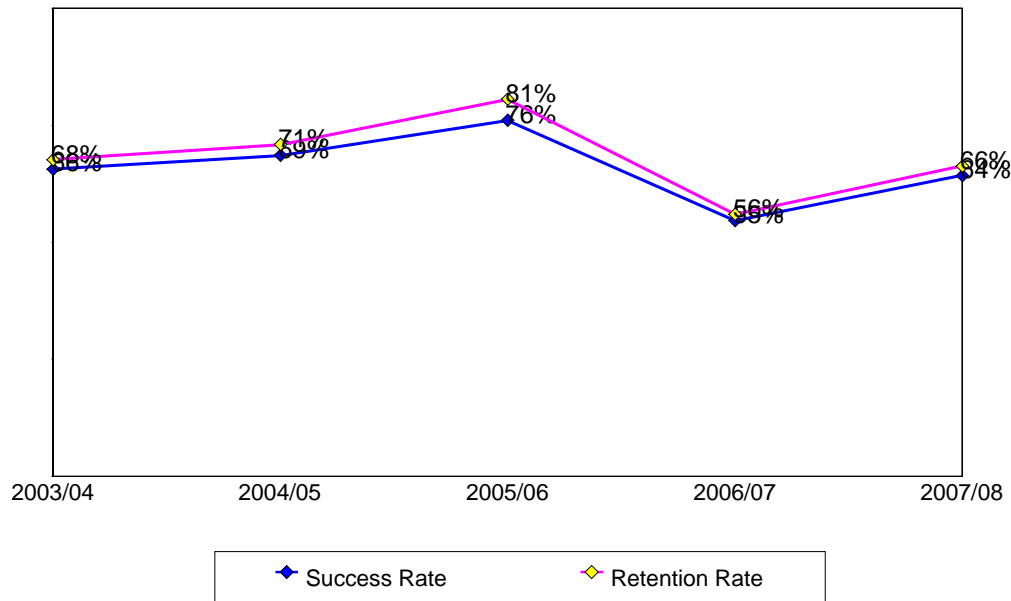
This report contains success and retention rates by various demographic segments and by course. Annual data are an aggregate of the fall and spring semesters. The following parameters have been applied:

- Success Counts: Number of students with A,B,C,CR grades.
- Success Rate: The percentage of students who complete a course with a grade of A,B,C,CR out of total enrollments.
- Retention Counts: Number of students with A,B,C,D,F,CR,NC, I grades.
- Retention Rate: The percentage of students who complete a course with a grade of A,B,C,D,F,CR,NC, I out of total headcount.

Annual Success and Retention

	Headcount	Success Count	Success Rate	Retention Count	Retention Rate
2003/04	99	65	66%	67	68%
2004/05	86	59	69%	61	71%
2005/06	67	51	76%	54	81%
2006/07	75	41	55%	42	56%
2007/08	98	63	64%	65	66%
Change from 2006/07 to 2007/08	23	22	10%	23	10%
Totals & Averages	425	279	66%	289	68%

Annual (Fall/Spring) Success and Retention Rates



Source: SMCCCD Data Warehouse

Success and Retention By Term

	Headcount	Success Count	Success Rate	Retention Count	Retention Rate
Fall 2003	48	31	65%	31	65%
Fall 2004	51	31	61%	33	65%
Fall 2005	48	36	75%	38	79%
Fall 2006	32	12	38%	12	38%
Fall 2007	39	19	49%	20	51%
Spring 2004	51	34	67%	36	71%
Spring 2005	35	28	80%	28	80%
Spring 2006	19	15	79%	16	84%
Spring 2007	43	29	67%	30	70%
Spring 2008	59	44	75%	45	76%
Totals & Averages	425	279	66%	289	68%

Grade Distribution

	A		B		C		F		CR		NC		W	
Fall 2003	17	40%	7	11%	3	8%			4	5%			16	36%
Fall 2004	19	35%	2	5%			2	4%	10	17%			17	39%
Fall 2005	27	53%	8	17%					1	2%	2	5%	10	23%
Fall 2006	6	19%	5	17%					1	0%			20	64%
Fall 2007	9	21%	6	17%	2	7%			2	4%			19	51%
Spring 2004	16	35%	4	4%	1	0%			11	26%	2	0%	15	35%
Spring 2005	21	65%	6	17%					1	4%			6	14%
Spring 2006	12	54%	3	20%			1	6%					3	20%
Spring 2007	24	55%	3	5%	1	1%	1	3%	1	3%			13	34%
Spring 2008	25	47%	10	17%	3	6%			5	6%	1	0%	14	24%

Source: SMCCCD Data Warehouse

Success and Retention by Ethnicity

		Headcount	Success Count	Success Rate	Retention Count	Retention Rate
2003/04	African American	6	1	17%	1	17%
	Asian	24	19	79%	19	79%
	Filipino	7	4	57%	4	57%
	Hispanic	21	18	86%	18	86%
	Native American	1				
	Other	4	4	100%	4	100%
	White	32	17	53%	19	59%
	Unreported	4	2	50%	2	50%
	Totals & Averages	99	65	66%	67	68%
2004/05	African American	3	1	33%	1	33%
	Asian	14	10	71%	11	79%
	Filipino	25	22	88%	22	88%
	Hispanic	21	15	71%	16	76%
	Other	1	1	100%	1	100%
	White	18	7	39%	7	39%
	Unreported	4	3	75%	3	75%
		Totals & Averages	86	59	69%	61
2005/06	African American	5	2	40%	2	40%
	Asian	15	13	87%	13	87%
	Filipino	18	14	78%	16	89%
	Hispanic	10	9	90%	10	100%
	Native American	1	1	100%	1	100%
	Other	2	1	50%	1	50%
	White	15	10	67%	10	67%
	Unreported	1	1	100%	1	100%
	Totals & Averages	67	51	76%	54	81%
2006/07	African American	3	1	33%	1	33%
	Asian	14	11	79%	11	79%
	Filipino	23	17	74%	17	74%
	Hispanic	16	5	31%	6	38%
	Native American	1	1	100%	1	100%
	White	10	5	50%	5	50%
	Unreported	8	1	13%	1	13%
		Totals & Averages	75	41	55%	42
2007/08	African American	5				
	Asian	16	11	69%	12	75%
	Filipino	30	26	87%	26	87%
	Hispanic	15	9	60%	9	60%
	Other	4	1	25%	1	25%
	White	19	12	63%	13	68%
	Unreported	9	4	44%	4	44%
		Totals & Averages	98	63	64%	65

Source: SMCCCD Data Warehouse

Success and Retention by Gender

		Headcount	Success Count	Success Rate	Retention Count	Retention Rate
2003/04	Female	54	32	59%	34	63%
	Male	44	32	73%	32	73%
	Unreported	1	1	100%	1	100%
	Totals & Averages	99	65	66%	67	68%
2004/05	Female	56	41	73%	43	77%
	Male	30	18	60%	18	60%
	Totals & Averages	86	59	69%	61	71%
2005/06	Female	46	37	80%	39	85%
	Male	21	14	67%	15	71%
	Totals & Averages	67	51	76%	54	81%
2006/07	Female	36	17	47%	17	47%
	Male	37	24	65%	25	68%
	Unreported	2				
	Totals & Averages	75	41	55%	42	56%
2007/08	Female	59	41	69%	43	73%
	Male	37	21	57%	21	57%
	Unreported	2	1	50%	1	50%
	Totals & Averages	98	63	64%	65	66%

Success and Retention by Day/Evening Status

		Headcount	Success Count	Success Rate	Retention Count	Retention Rate
2003/04	Day	56	44	79%	44	79%
	Evening	43	21	49%	23	53%
2004/05	Day	68	55	81%	55	81%
	Evening	18	4	22%	6	33%
2005/06	Day	51	41	80%	44	86%
	Evening	16	10	63%	10	63%
2006/07	Day	34	21	62%	21	62%
	Evening	41	20	49%	21	51%
2007/08	Day	76	49	64%	51	67%
	Evening	22	14	64%	14	64%

Source: SMCCCD Data Warehouse

Success and Retention by Age

		Headcount	Success Count	Success Rate	Retention Count	Retention Rate
2003/04	Under 18	2	1	50%	1	50%
	Age 18-22	39	25	64%	25	64%
	Age 23-28	18	14	78%	14	78%
	Age 29-39	20	14	70%	15	75%
	Age 40-49	9	6	67%	6	67%
	Age 50-59	10	4	40%	5	50%
	Age 60+	1	1	100%	1	100%
	Totals & Averages	99	65	66%	67	68%
2004/05	Under 18	1	1	100%	1	100%
	Age 18-22	48	34	71%	36	75%
	Age 23-28	14	6	43%	6	43%
	Age 29-39	12	11	92%	11	92%
	Age 40-49	6	6	100%	6	100%
	Age 50-59	5	1	20%	1	20%
		Totals & Averages	86	59	69%	61
2005/06	Age 18-22	35	30	86%	32	91%
	Age 23-28	13	8	62%	8	62%
	Age 29-39	8	5	63%	6	75%
	Age 40-49	6	6	100%	6	100%
	Age 50-59	2				
	Age 60+	3	2	67%	2	67%
		Totals & Averages	67	51	76%	54
2006/07	Age 18-22	40	21	53%	22	55%
	Age 23-28	20	9	45%	9	45%
	Age 29-39	9	6	67%	6	67%
	Age 40-49	1				
	Age 50-59	4	4	100%	4	100%
	Age 60+	1	1	100%	1	100%
		Totals & Averages	75	41	55%	42
2007/08	Under 18	3	2	67%	2	67%
	Age 18-22	52	33	63%	33	63%
	Age 23-28	26	18	69%	18	69%
	Age 29-39	7	4	57%	5	71%
	Age 40-49	3	1	33%	2	67%
	Age 50-59	4	4	100%	4	100%
	Age 60+	3	1	33%	1	33%
	Totals & Averages	98	63	64%	65	66%

Source: SMCCD Data Warehouse

Success and Retention by Enrollment Status

		Headcount	Success Count	Success Rate	Retention Count	Retention Rate
2003/04	Continuing Student	67	47	70%	48	72%
	First-Time Student	9	3	33%	3	33%
	First-Time Transfer Student	8	4	50%	4	50%
	Returning Student	9	7	78%	7	78%
	Returning Transfer Student	6	4	67%	5	83%
2004/05	Continuing Student	63	49	78%	49	78%
	First-Time Student	5	3	60%	3	60%
	First-Time Transfer Student	6	2	33%	2	33%
	Returning Student	6	3	50%	3	50%
	Returning Transfer Student	6	2	33%	4	67%
2005/06	Continuing Student	56	44	79%	47	84%
	First-Time Student	1	1	100%	1	100%
	First-Time Transfer Student	2	1	50%	1	50%
	Returning Student	4	3	75%	3	75%
	Returning Transfer Student	4	2	50%	2	50%
2006/07	Continuing Student	62	38	61%	39	63%
	First-Time Student	1				
	First-Time Transfer Student	5	1	20%	1	20%
	Returning Student	6	1	17%	1	17%
	Returning Transfer Student	1	1	100%	1	100%
2007/08	Continuing Student	61	46	75%	46	75%
	Currently K-12	2	2	100%	2	100%
	First-Time Student	12	4	33%	4	33%
	First-Time Transfer Student	5	3	60%	3	60%
	Returning Student	8	3	38%	4	50%
	Returning Transfer Student	10	5	50%	6	60%