

# Using GIS to Inform Student Equity and Outreach Efforts at Skyline College

IEC Committee Meeting

August 28, 2017

---

Lauren Ford, Outreach

Zahra Mojtahedi, PRIE



# Mapping to...

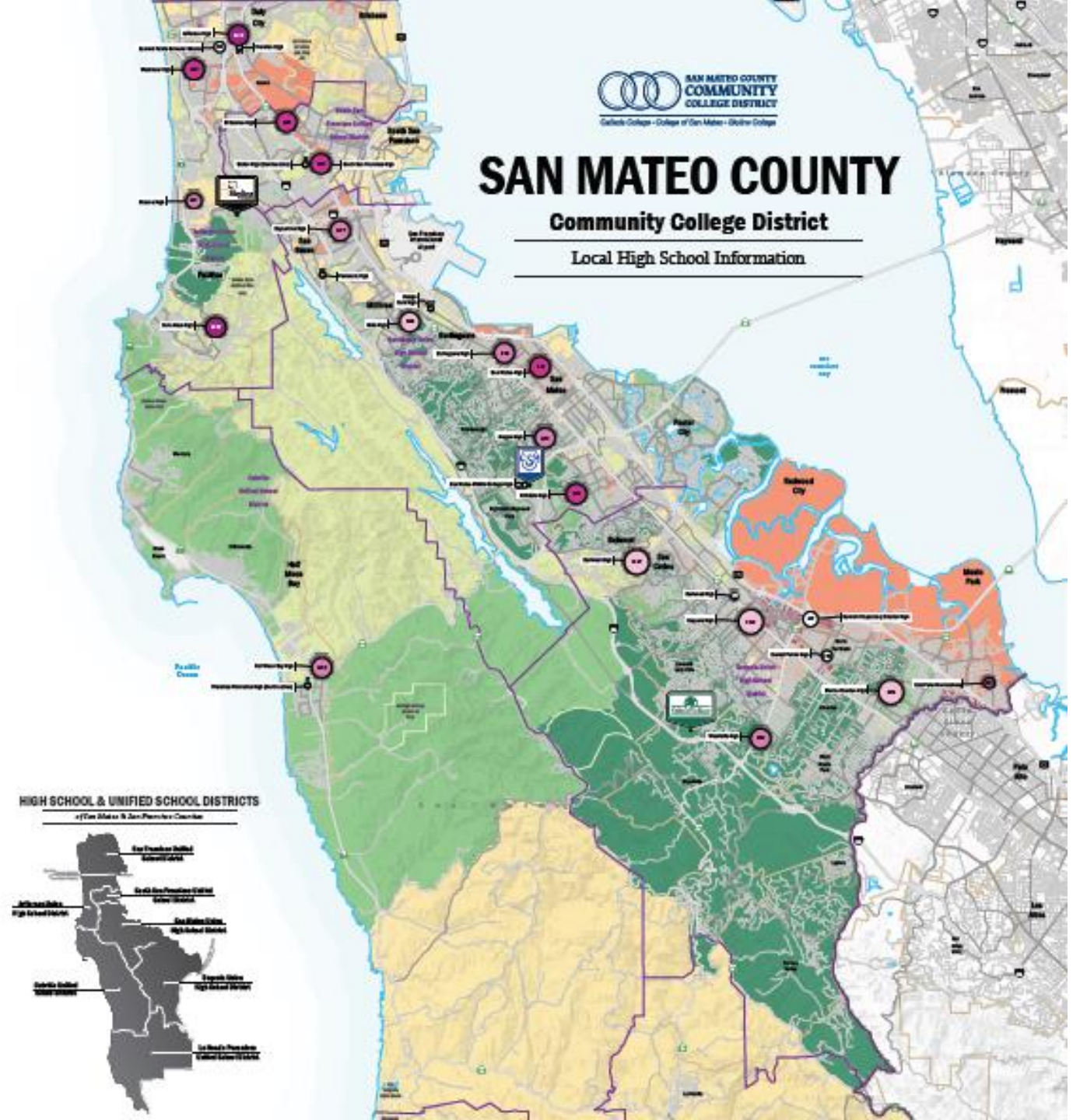
---

- Inform
- Visualize
- Contextualize

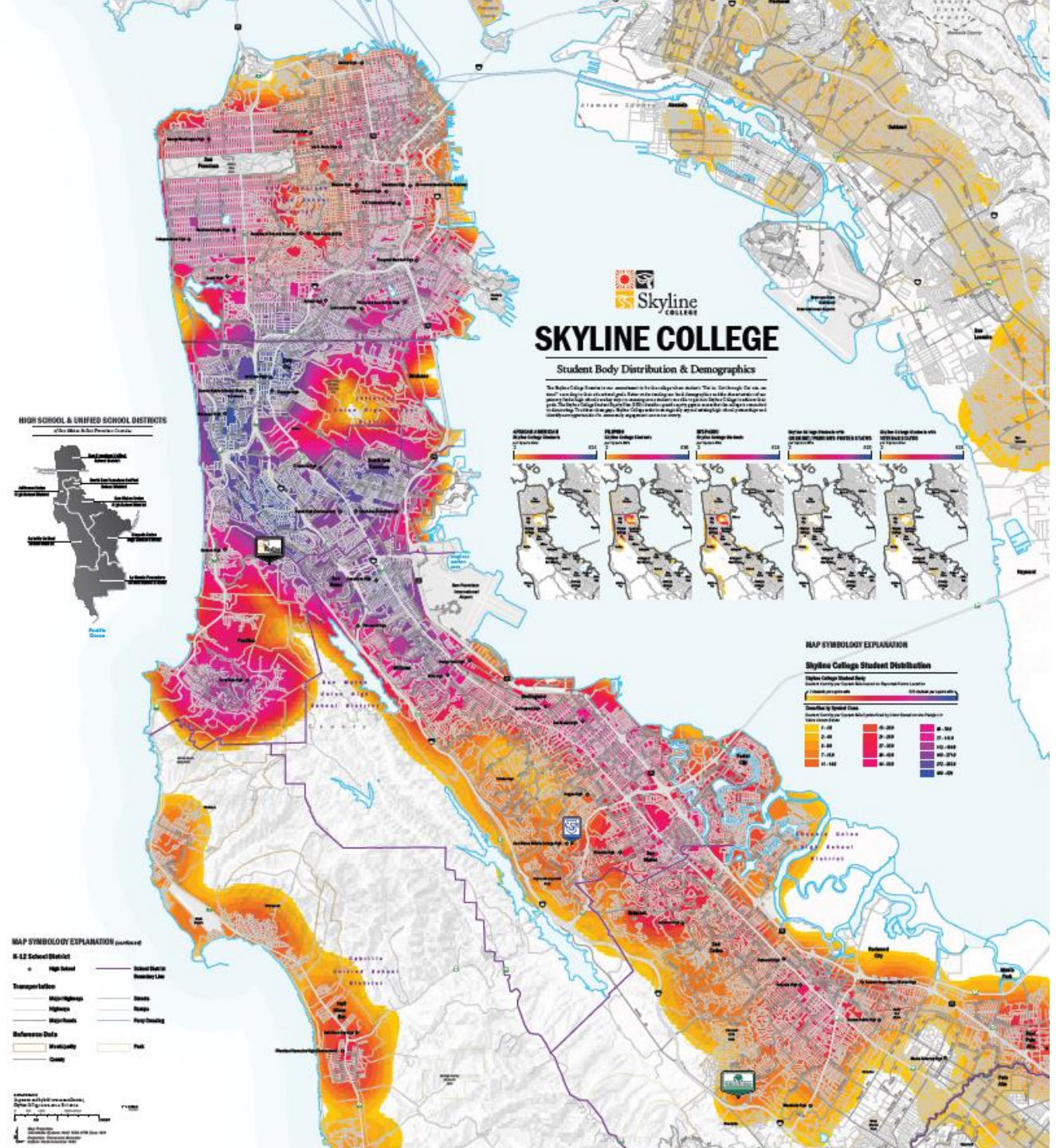
# What was mapped?

---

- San Mateo County Context
- Current Student Population
- Local Community and H.S. Information

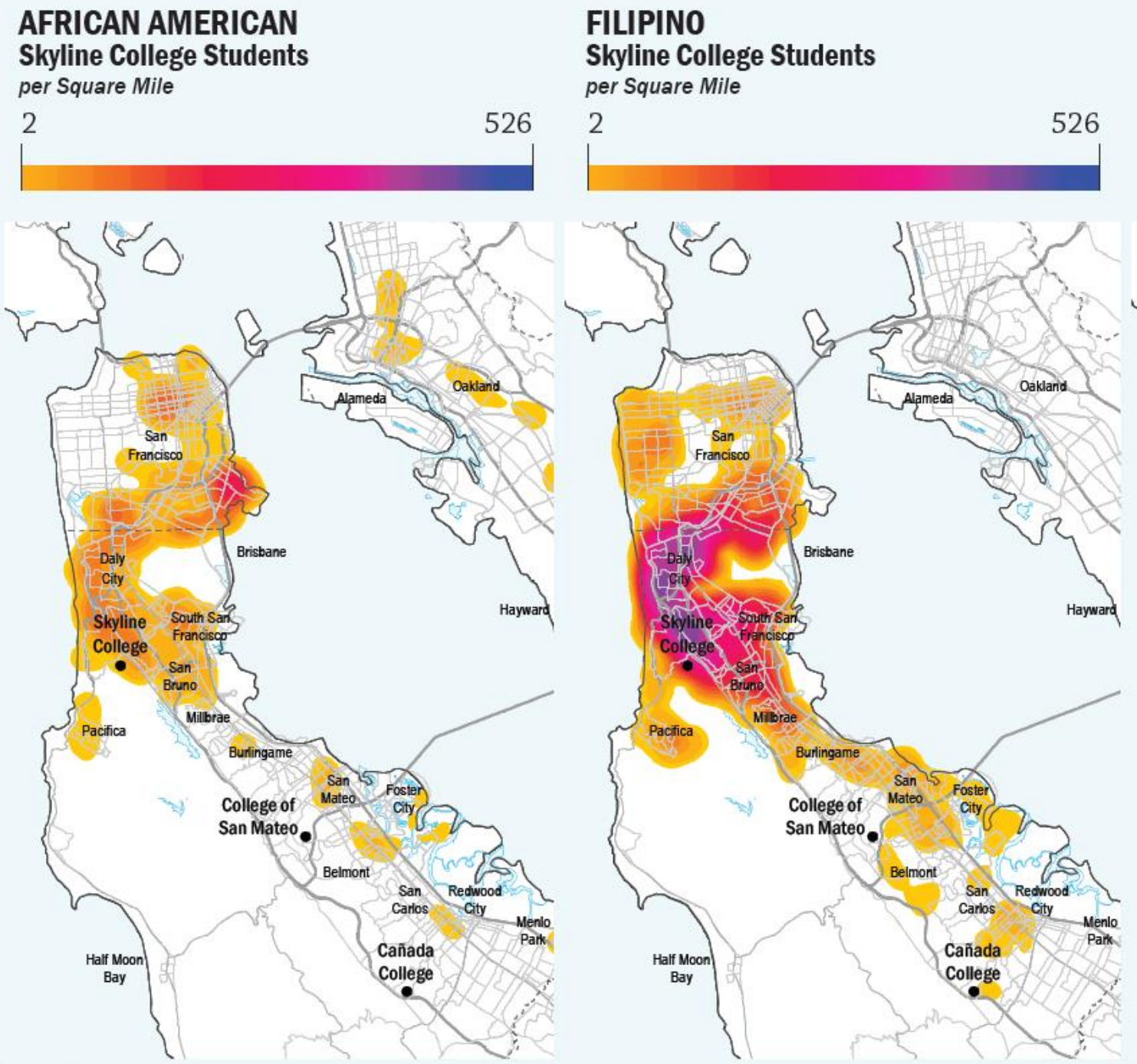




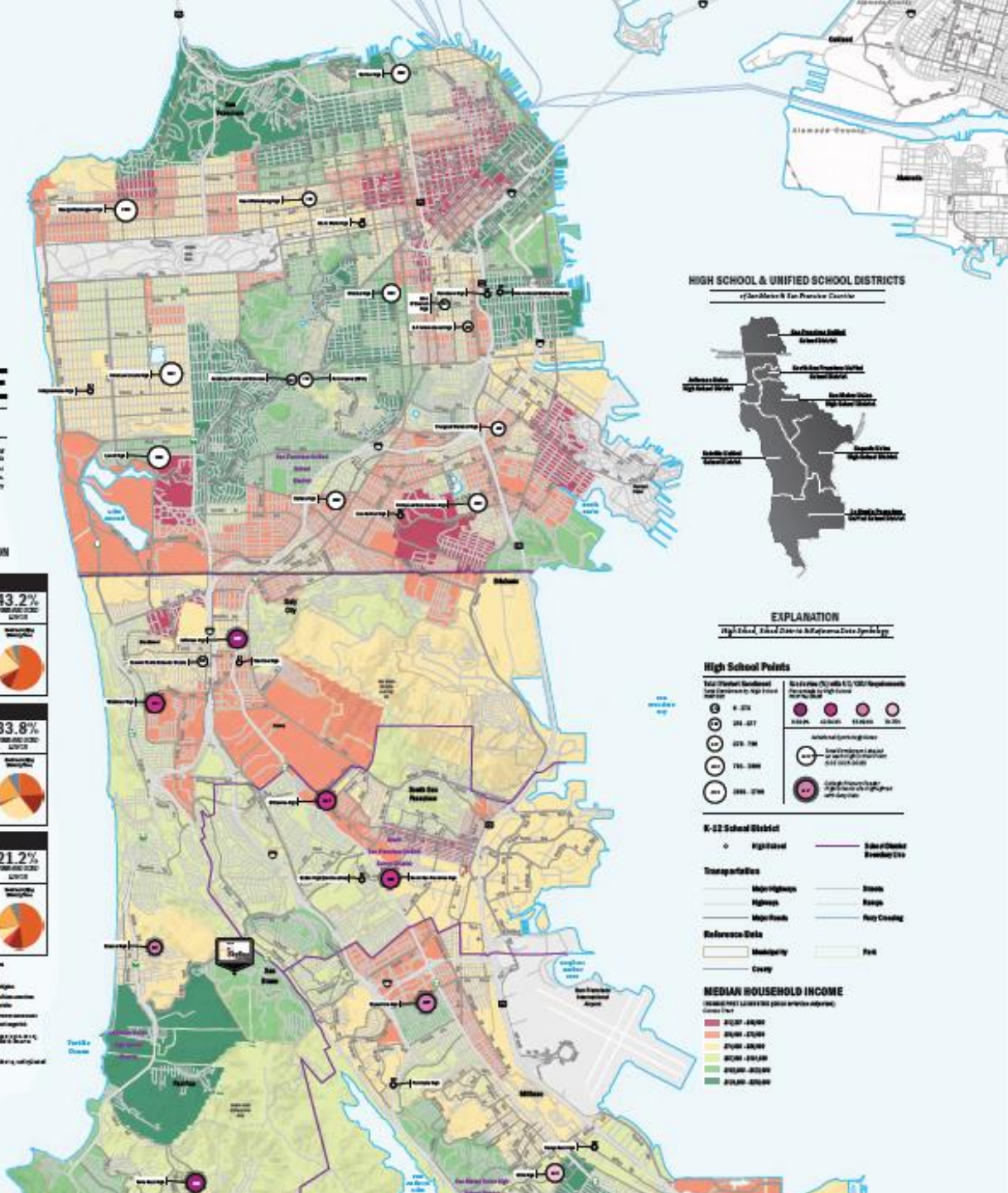
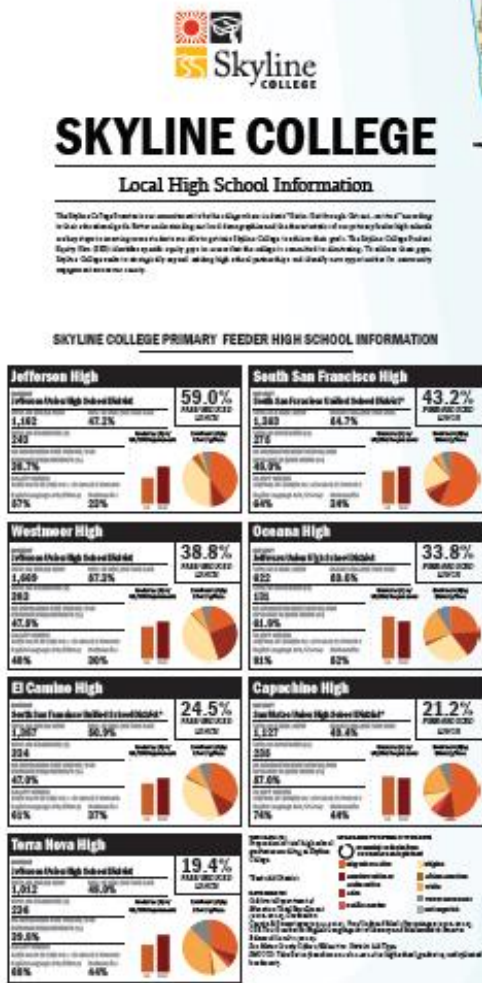




# Current Students

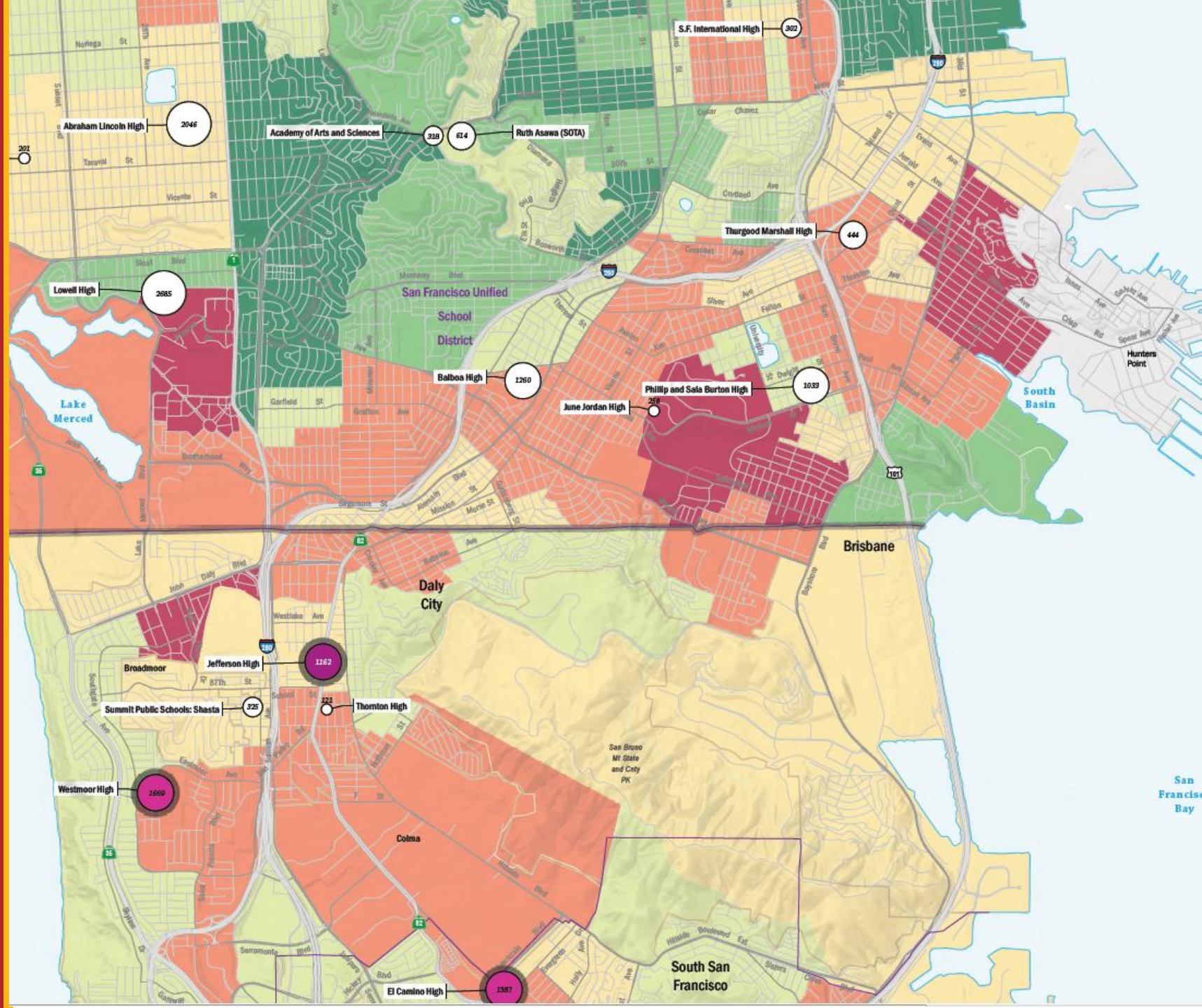


# Local Community and H.S. Information





- 1 Campus Recruiter
- 3-5 Student Ambassadors
- On- and off-campus community engagement





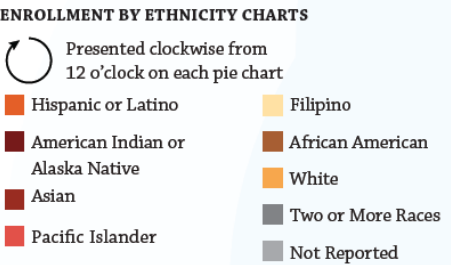
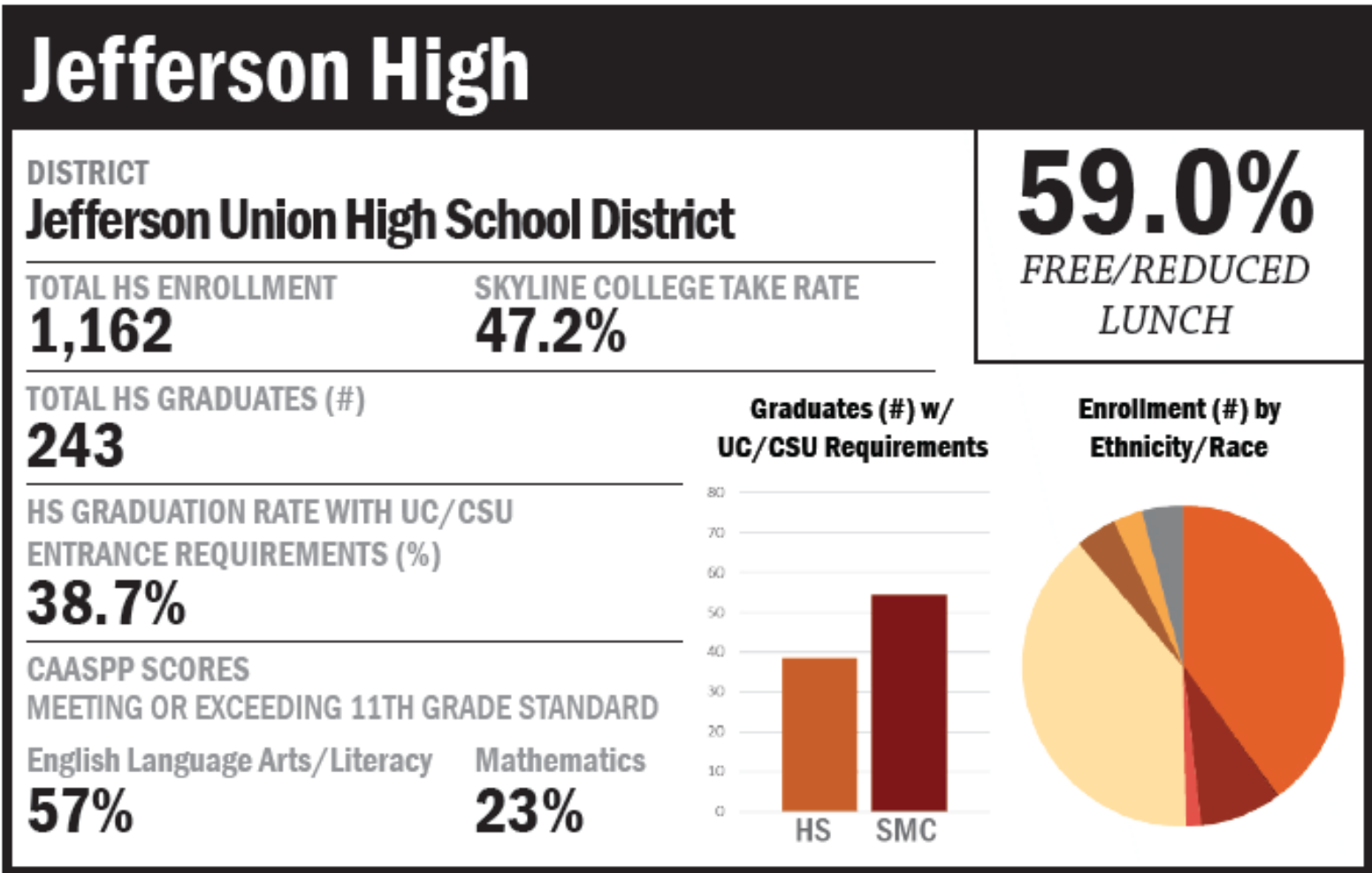
## Outreach: Top Feeder High Schools

---

- Jefferson High School
- Oceana High School
- Terra Nova High School
- Thornton High School
- Westmoor High School
- El Camino High School
- South San Francisco High School
- Capuchino High School
- Baden High School
- Peninsula High School

Outreach  
Activities:  
Jefferson

- Football Games
- Parent Meetings
- Brothers & Sisters Conference





## Outreach Activities: Capuchino

- La Raza Youth Conference
- Senior Signing Day

# Capuchino High

DISTRICT

**San Mateo Union High School District\***

TOTAL HS ENROLLMENT

**1,127**

SKYLINE COLLEGE TAKE RATE

**49.4%**

**21.2%**

*FREE/REDUCED  
LUNCH*

TOTAL HS GRADUATES (#)

**235**

HS GRADUATION RATE WITH UC/CSU  
ENTRANCE REQUIREMENTS (%)

**57.0%**

CAASPP SCORES

MEETING OR EXCEEDING 11TH GRADE STANDARD

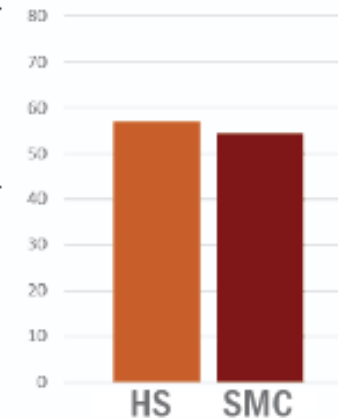
English Language Arts/Literacy

**74%**

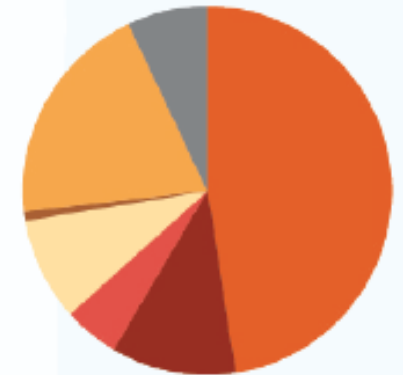
Mathematics

**44%**


Graduates (#) w/  
UC/CSU Requirements












Enrollment (#) by  
Ethnicity/Race



### ENROLLMENT BY ETHNICITY CHARTS

 Presented clockwise from  
12 o'clock on each pie chart

- |   |   |
|---|---|
|  Hispanic or Latino                  |  Filipino          |
|  American Indian or<br>Alaska Native |  African American  |
|  Asian                               |  White             |
|  Pacific Islander                    |  Two or More Races |
|   |  Not Reported      |

## Outreach Activities: SSFHS

- Hermanos y Hermanas Program
- Kapatiran Program
- Discover Puente
- La Raza Youth Conference

# South San Francisco High

DISTRICT

**South San Francisco Unified School District\***

TOTAL HS ENROLLMENT

**1,363**

SKYLINE COLLEGE TAKE RATE

**54.7%**

**43.2%**

*FREE/REDUCED  
LUNCH*

TOTAL HS GRADUATES (#)

**275**

HS GRADUATION RATE WITH UC/CSU  
ENTRANCE REQUIREMENTS (%)

**48.0%**

CAASPP SCORES

MEETING OR EXCEEDING 11TH GRADE STANDARD

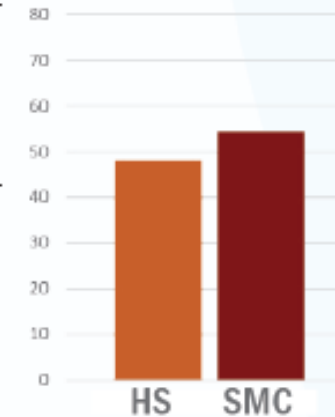
English Language Arts/Literacy

**64%**

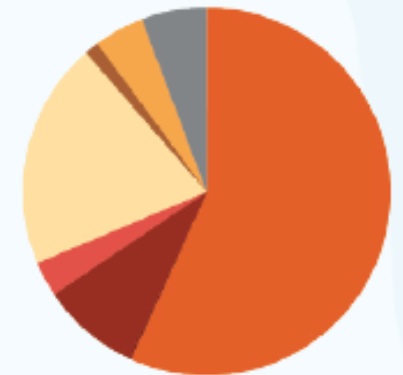
Mathematics

**34%**

Graduates (#) w/  
UC/CSU Requirements

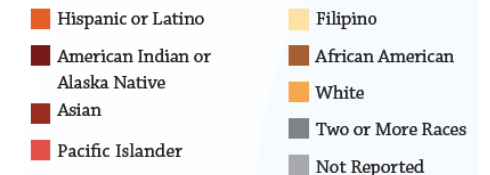


Enrollment (#) by  
Ethnicity/Race



### ENROLLMENT BY ETHNICITY CHARTS

Presented clockwise from 12 o'clock on each pie chart





## Outreach Activities: ECHS

- Discover ASTEP
- Brothers & Sisters Conference
- La Raza Youth Conference

# El Camino High

DISTRICT

**South San Francisco Unified School District\***

TOTAL HS ENROLLMENT

**1,387**

SKYLINE COLLEGE TAKE RATE

**50.9%**

**24.5%**

*FREE/REDUCED  
LUNCH*

TOTAL HS GRADUATES (#)

**334**

HS GRADUATION RATE WITH UC/CSU  
ENTRANCE REQUIREMENTS (%)

**47.0%**

CAASPP SCORES

MEETING OR EXCEEDING 11TH GRADE STANDARD

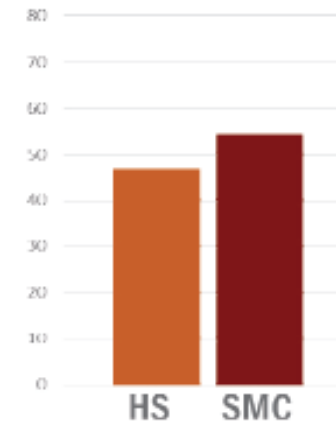
English Language Arts/Literacy

**61%**

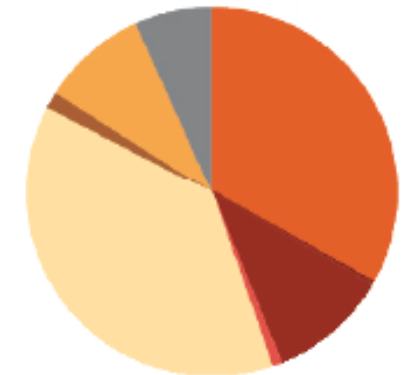
Mathematics

**37%**

**Graduates (#) w/  
UC/CSU Requirements**

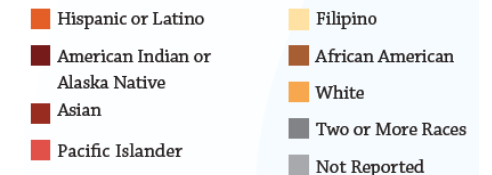


**Enrollment (#) by  
Ethnicity/Race**



### ENROLLMENT BY ETHNICITY CHARTS

Presented clockwise from  
12 o'clock on each pie chart



## Outreach Equity Activities:

---

- Discover Days
  - ASTEP x El Camino High School
  - Puente x South SF High School
  - CAA Health x 3<sup>rd</sup> Street Youth Center
- Brothers & Sisters Conference
  - African American HS Students
- La Raza Youth Conference
  - Latinx High School Students



# Questions?

---

Thank you!