



SAN MATEO COUNTY
COMMUNITY
COLLEGE DISTRICT

FACILITIES PLANNING,
MAINTENANCE & OPERATIONS

Capital Improvement Program Districtwide Student Housing @ CSM

APRIL 11, 2024

STRATEGIC PLANNING & ALLOCATION
OF RESOURCE COMMITTEE UPDATE



Districtwide Student Housing @ CSM

Total Budget **\$86M**

- State: \$56M
- District: \$30M

Project Scope

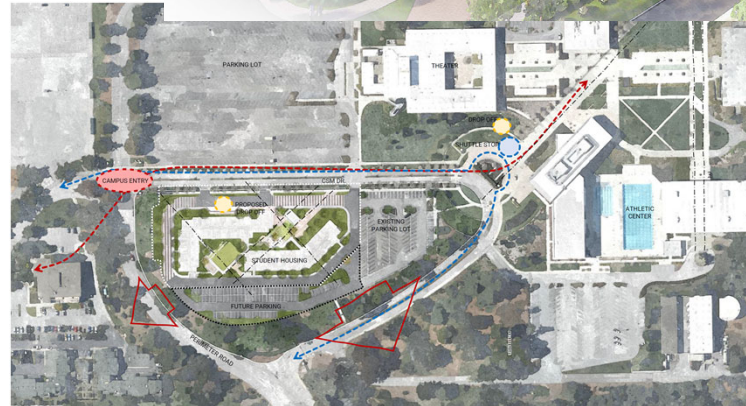
- Approx. 86K GSF, 3-stories, Lot B
- 310 - 314 student beds (incl mobility units)
- Projected rents: \$475 - \$920 / month
(Proposed Max. Monthly 2022 Low-Income Rent per Student = \$920, will be adjusted when the bldg opens)
- Resident Director's Apartment (2bd)

Schedule

- Design/DSA/Bidding May 2023 – Jul 2025
- Construction Aug 2025 - May 2027
- Move-in Jun 2027

Status

- Design Development Phase
- Continue to review budget/value engineer
- DSA - A/E Intro & Pre Submittal Mtg
 - California Geological Survey (CGS) Submittal in progress
- California Environmental Quality Act (CEQA) in progress (4-6 months)

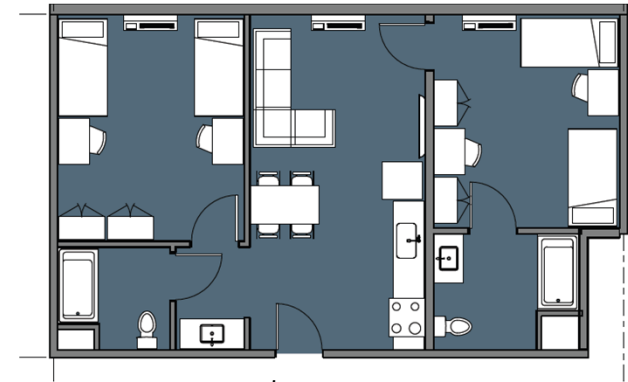


Districtwide Student Housing @ CSM

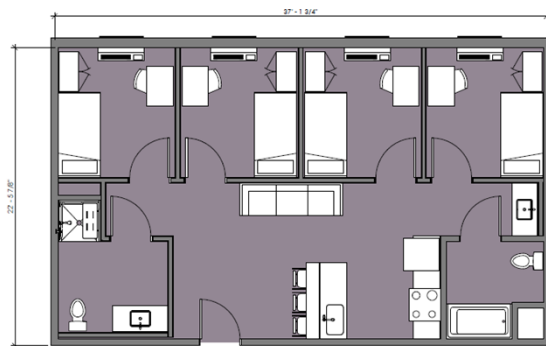


SEMI - 2BR/1BA 552sf **\$475**

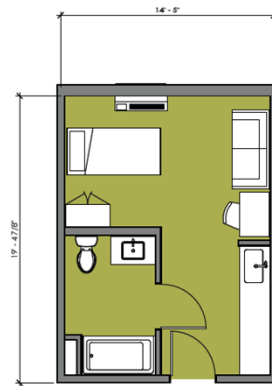
UNIT MIX	
SEMI-SUITES	
14 - 2BD/1BA (DBL)	= 168 BEDS
APARTMENTS	
10 - STUDIO	= 10 BEDS
02 - 2BD/2BA (DBL) <i>END UNIT</i>	= 16 BEDS
12 - 2BD/2BA (DBL)	= 48 BEDS
18 - 4 BD/2BA (SINGLE)	= 72 BEDS
TOTAL RENTABLE BEDS	= 314 BEDS
01 - 2 BD/2B (RD)	= 02 BEDS
TOTAL BEDS	= 316 BEDS



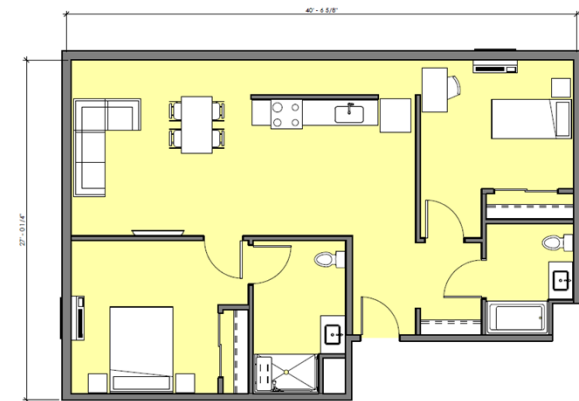
APT - 2BR/2BA 767sf **\$700**



APT - 4BR/2BA 800sf **\$775**

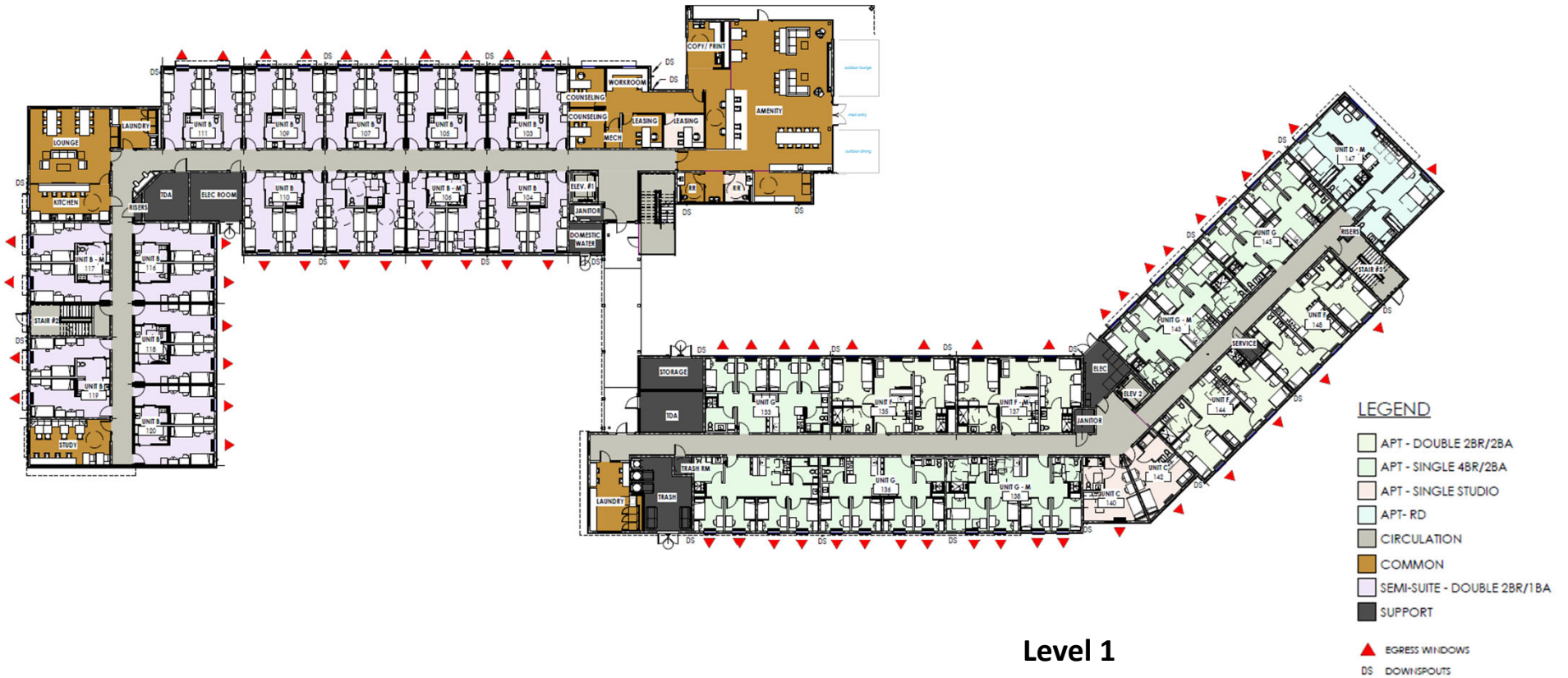


APT - STUDIO 260sf **\$920**

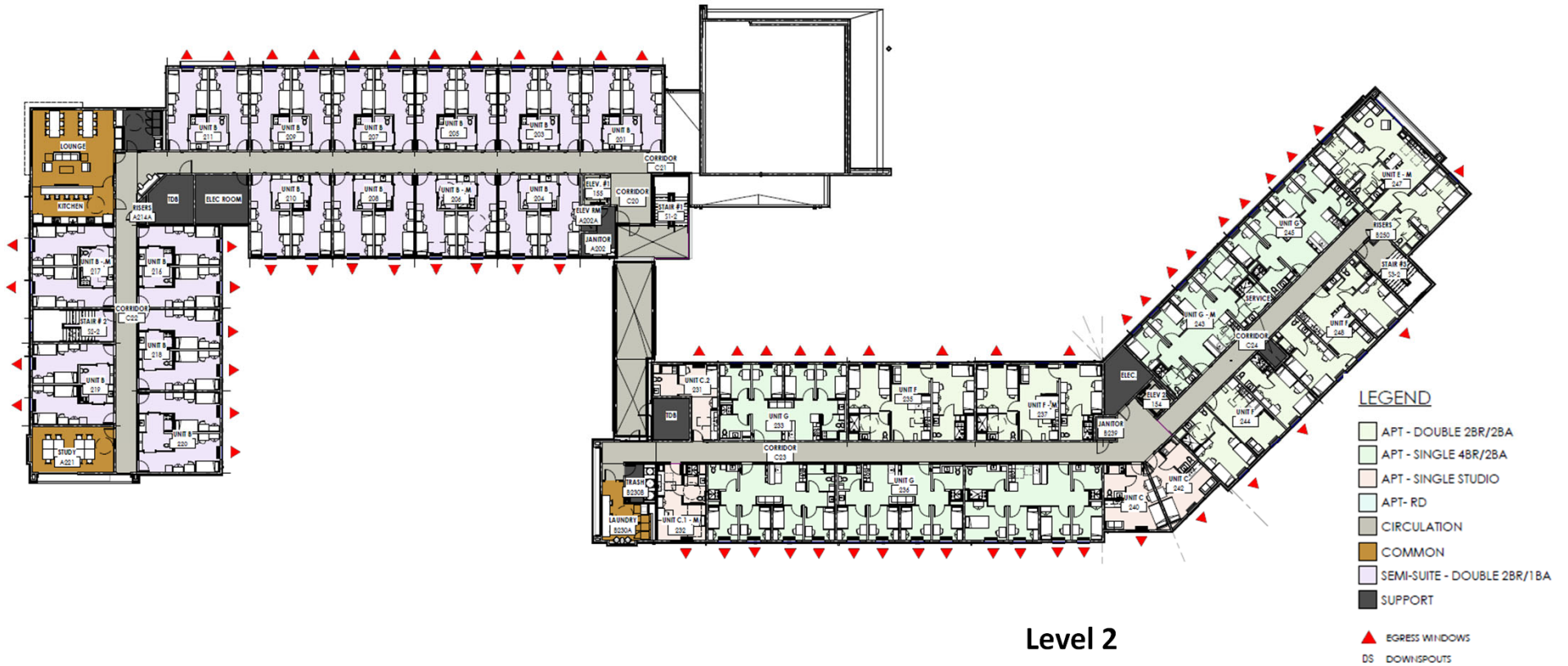


APT - RD 945sf **Resident Director - \$0**

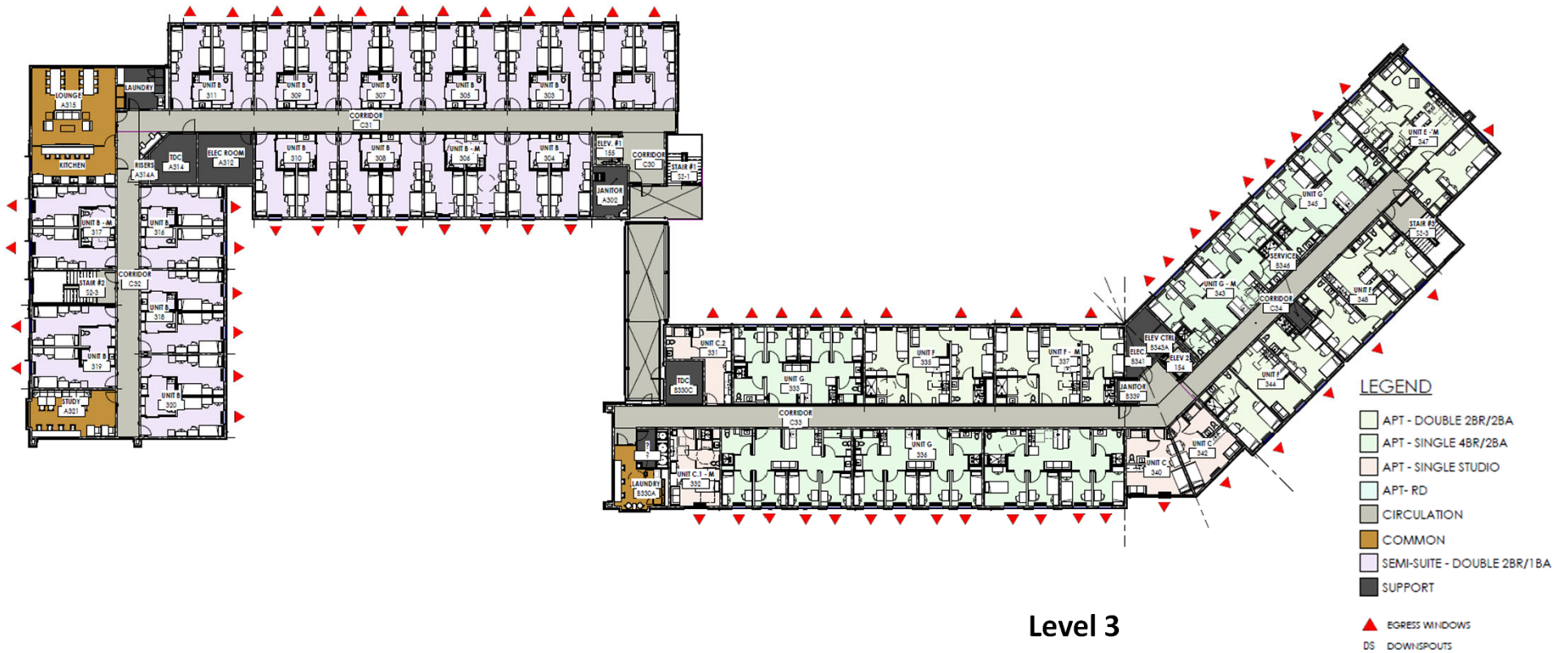
Districtwide Student Housing @ CSM



Districtwide Student Housing @ CSM



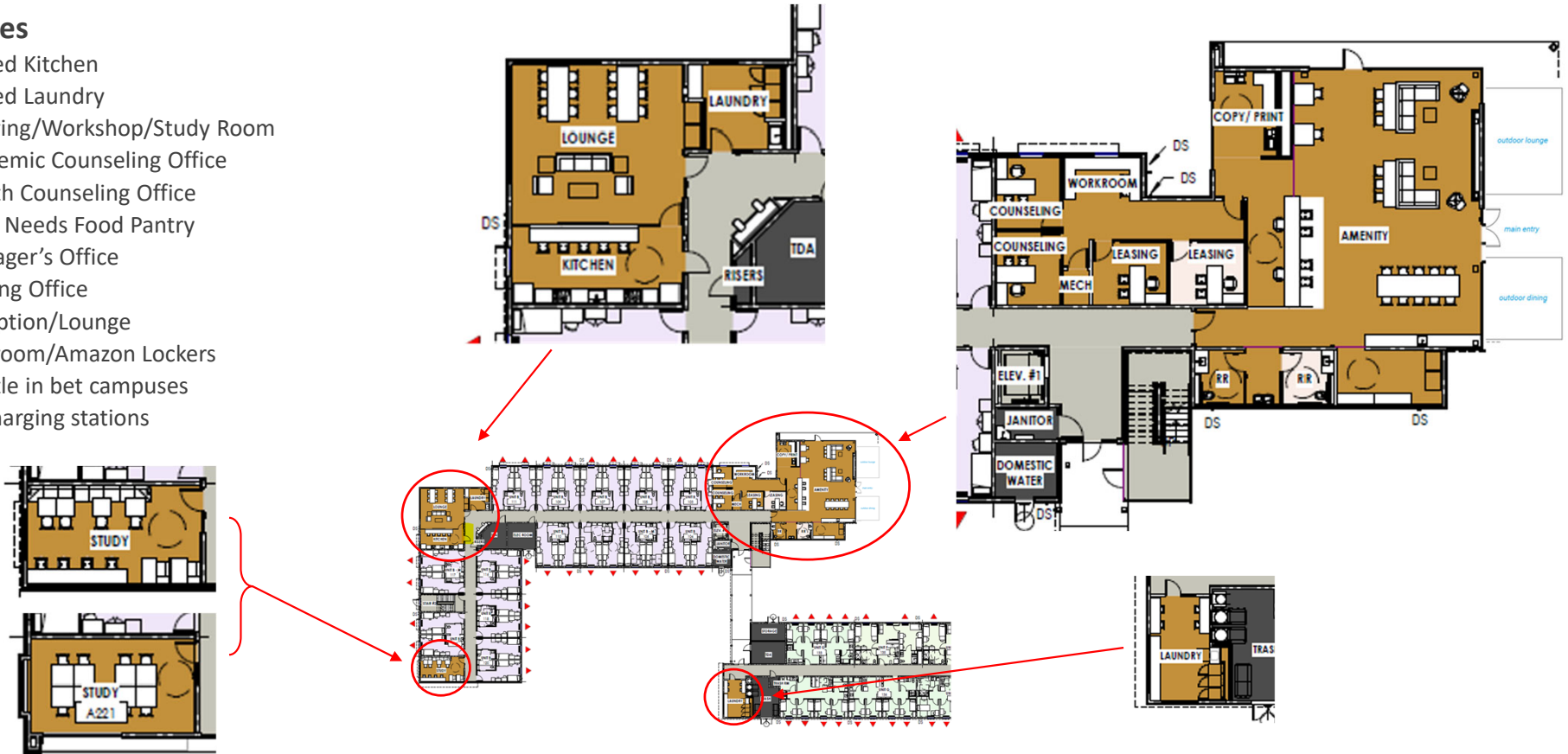
Districtwide Student Housing @ CSM



Districtwide Student Housing @ CSM

Amenities

- Shared Kitchen
- Shared Laundry
- Tutoring/Workshop/Study Room
- Academic Counseling Office
- Health Counseling Office
- Basic Needs Food Pantry
- Manager's Office
- Leasing Office
- Reception/Lounge
- Mailroom/Amazon Lockers
- Shuttle in bet campuses
- EV charging stations



Roadshow

CAN

Planning and Budget Council (PBC): 4/3/24
Associated Student - ASCC: TBD

CSM

Institutional Planning Committee (IPC): 2/7/24
Associated Student - ASCSM: 2/26/24

SKY

Strategic Planning and Allocation of Resource Comm. (SPARC): 4/11/24
Associated Student – ASSC: 3/12/24

Chancellor's Office

Council (monthly update) 3/26/24
Cabinet 4/2/24

Next Step..... Hire a consultant to start planning operations and start a Districtwide Task Force

Resources:

SB 169 Higher Education Student Housing Grant Program Bill Language - https://leginfo.legislature.ca.gov/faces/billTextClient.xhtml?bill_id=202120220SB169
SMCCCD Facilities Planning Website: <https://www.smccd.edu/facilities/projects/dw/dwstudenthousing.php>

Thank you!

dank u
ju faleminderit
Tack
Asante 谢谢 Tak mulțumesc
kiitos
Salamat! Gracias
Terima kasih Aliquam
Merci Dankie Obrigado
ありがとう köszönöm grazie
Aliquam Go raibh maith agat
děkuii Thank you

gem