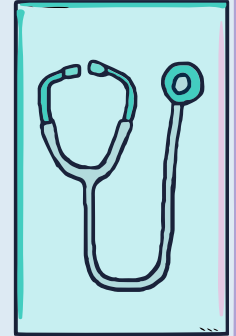
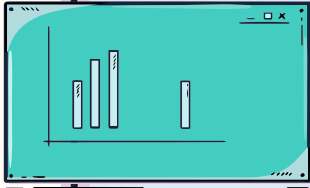


Surgical Careers Center



Program Descriptions

Anesthesia Technology

One ½ year program training techs to support the Anesthesiologist by providing supplies, preparing and maintaining equipment and assisting with patient care as needed. Grads earn an Associate's degree. National Certification required for employment.



Programs

Central Service Technology



One year program trains tech to clean, and sterilize patient care equipment and surgical instruments. The hospital relies on CSTs to re-stock all patient care supplies. Graduates earn a Certificate of Completion. National Certification required for employment.

Programs

Surgical Technology

One-year program trains tech to prepare instruments and supplies and assist surgeon during the procedure. Graduates earn an Associate's Degree. National Certification required for employment.



Achievements

- Anesthesia Tech Program added- only one of two AS Degree in State
- Increased Equipment to simulate O.R. experience
- Surg Tech Program now offers only AS degree to facilitate transfer to four-year college for career advancement
- Full-time Clinical Coordinator added to faculty

Achievements

**Enrollments: Increasing in part
D/T adding Anesthesia Tech
Program**

Retention Rate: 98%

Success Rate: 88%

**Employment Rate: Difficult to
Assess**

Department of Labor

↑ Job Openings:

Surg Techs = 15%

CS Techs = 14%

Anesth. Techs = 35%

Challenges



Shortage of Clinical Placements

D/T

- Pandemic
- Staffing shortages in hospitals

Loss of Faculty

D/T

- Pay better in profession
- Few Techs with degrees, teaching experience

Future Goals

- Hiring full-time Program Director and Clinical Coordinator to support all three programs
- Provide up-to-date tools and equipment
- Train students in soft skills to prepare them for work



Summary

- **Surgical Careers Center has reputation of providing Hospitals with well-trained tech staff**
- **Skyline College serves students from all of the 8 Bay Area counties**
- **Retention and success must be maintained with adequate and qualified staff to meet the needs of the community**