

President's *On Campus* Briefing #1

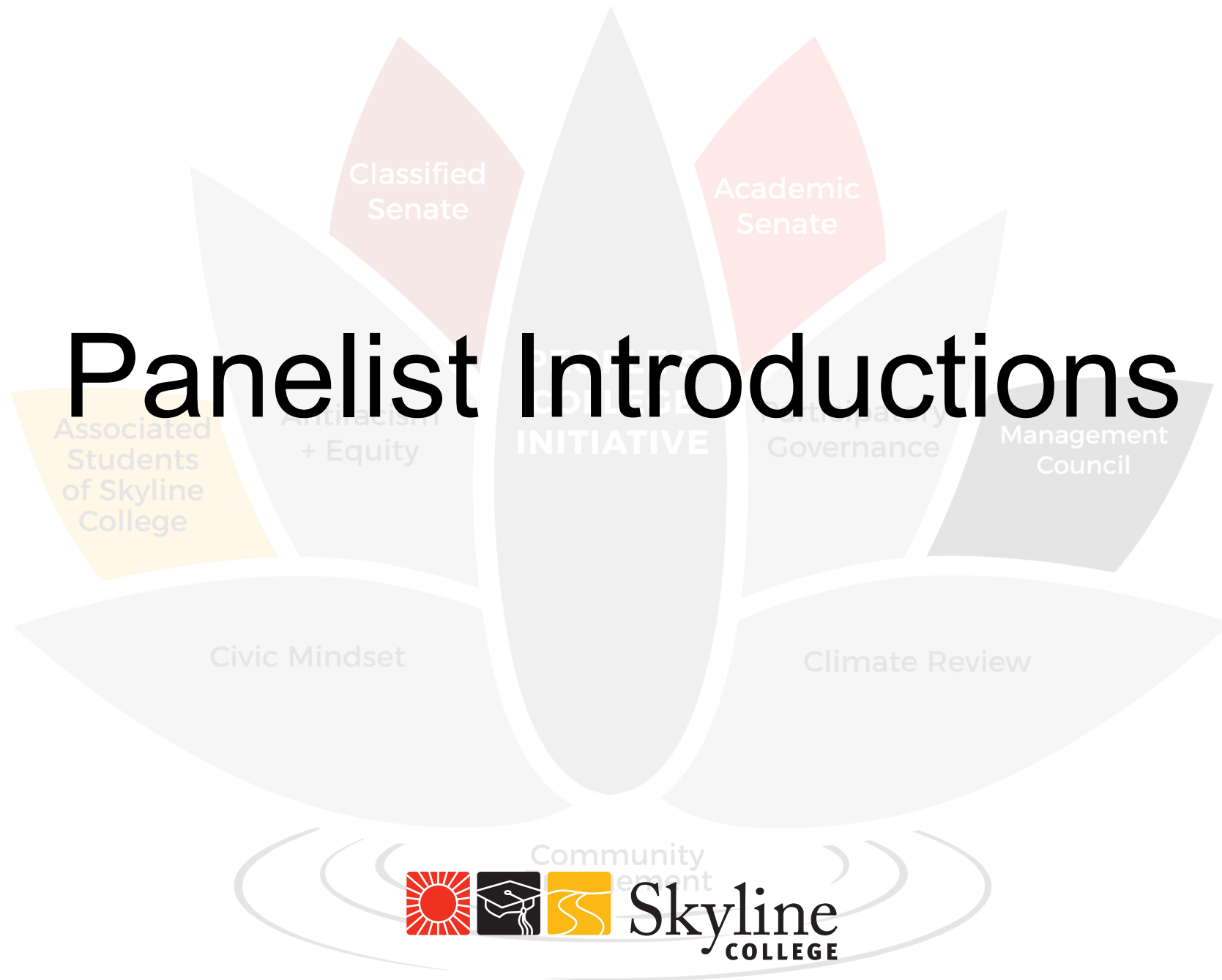
Spring 2022



Agenda

- Panelist Introductions
- President's Opening Comments
- Updates from our District Experts
 - Medical, Facilities, Human Resources
- Updates from Skyline College
 - Instruction and Student Services
- Q & A

Panelist Introductions



President's Opening Comments

Classified
Senate

Academic
Senate

Associated
Students
of Skyline
College

Civic Mindset

Climate Review

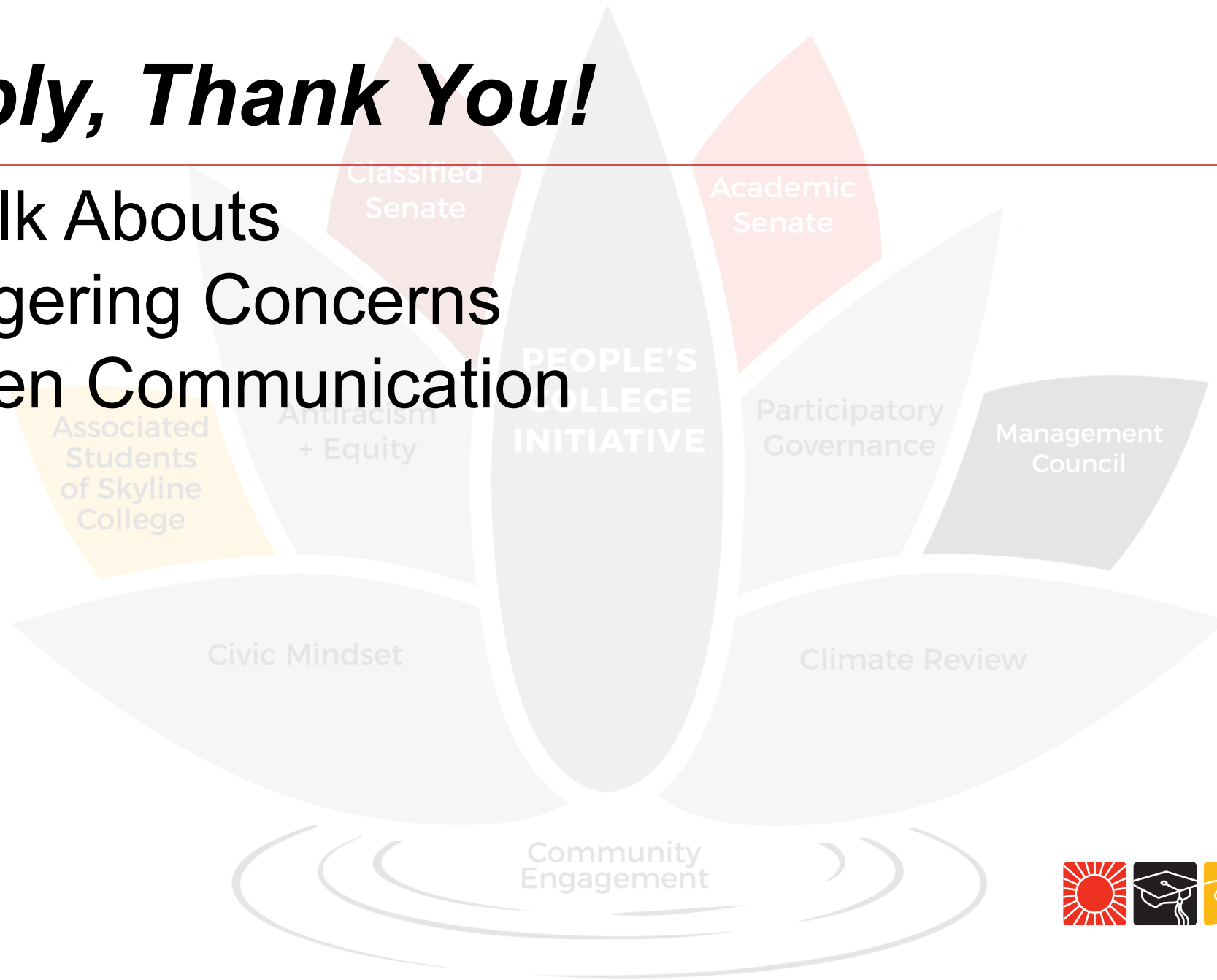


Community
element

Skyline
COLLEGE

Simply, Thank You!

- Walk Abouts
- Lingering Concerns
- Open Communication



On Campus Briefings

- Previous Briefings Posted Here:
<https://skylinecollege.edu/presidentsoffice/return-to-campus.php>
- Q & A
 - Questions answered live (please watch the video)
 - Remaining questions are posted in a pdf

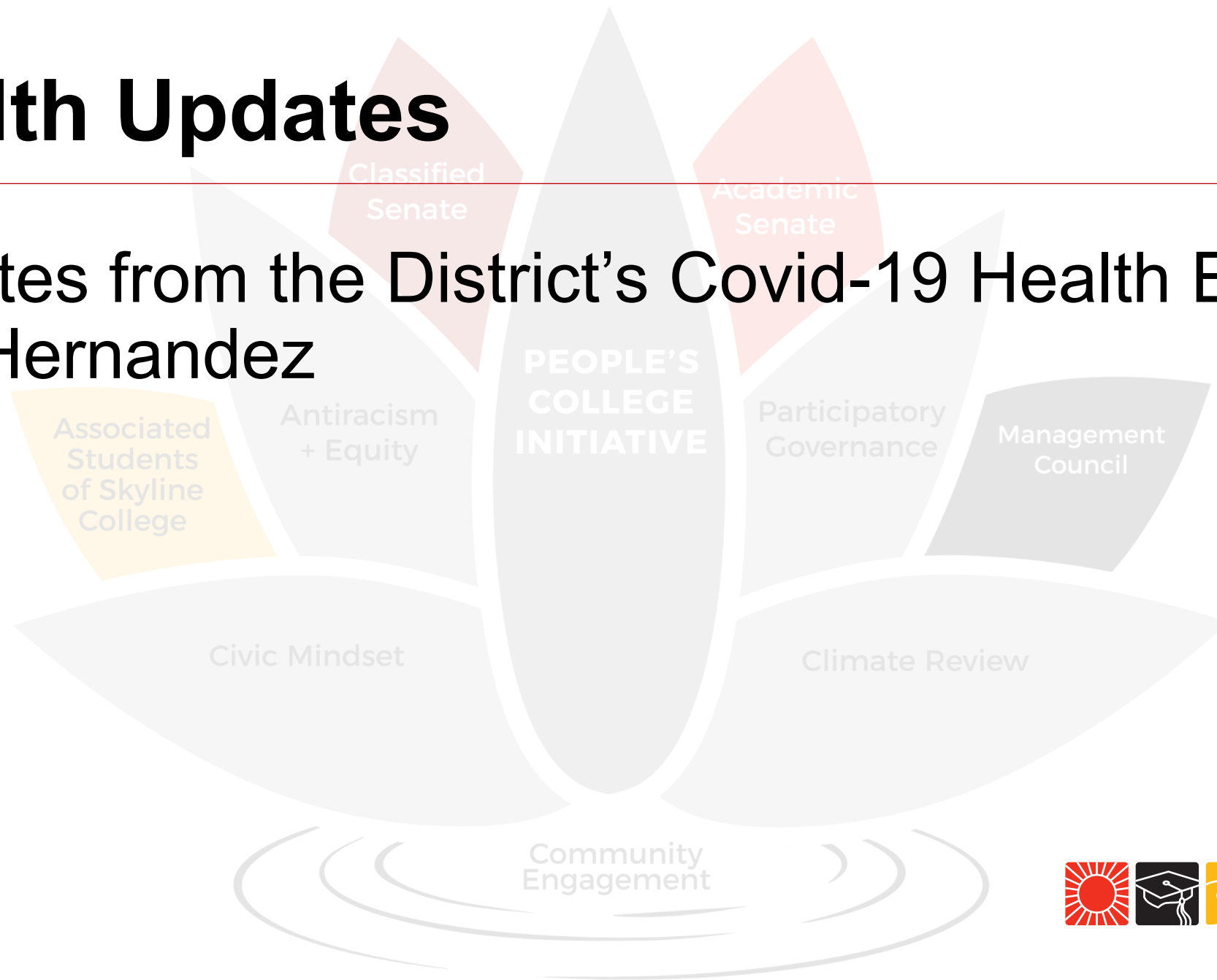
Resource

District Website

<https://smccd.edu/return-to-campus/index.php>

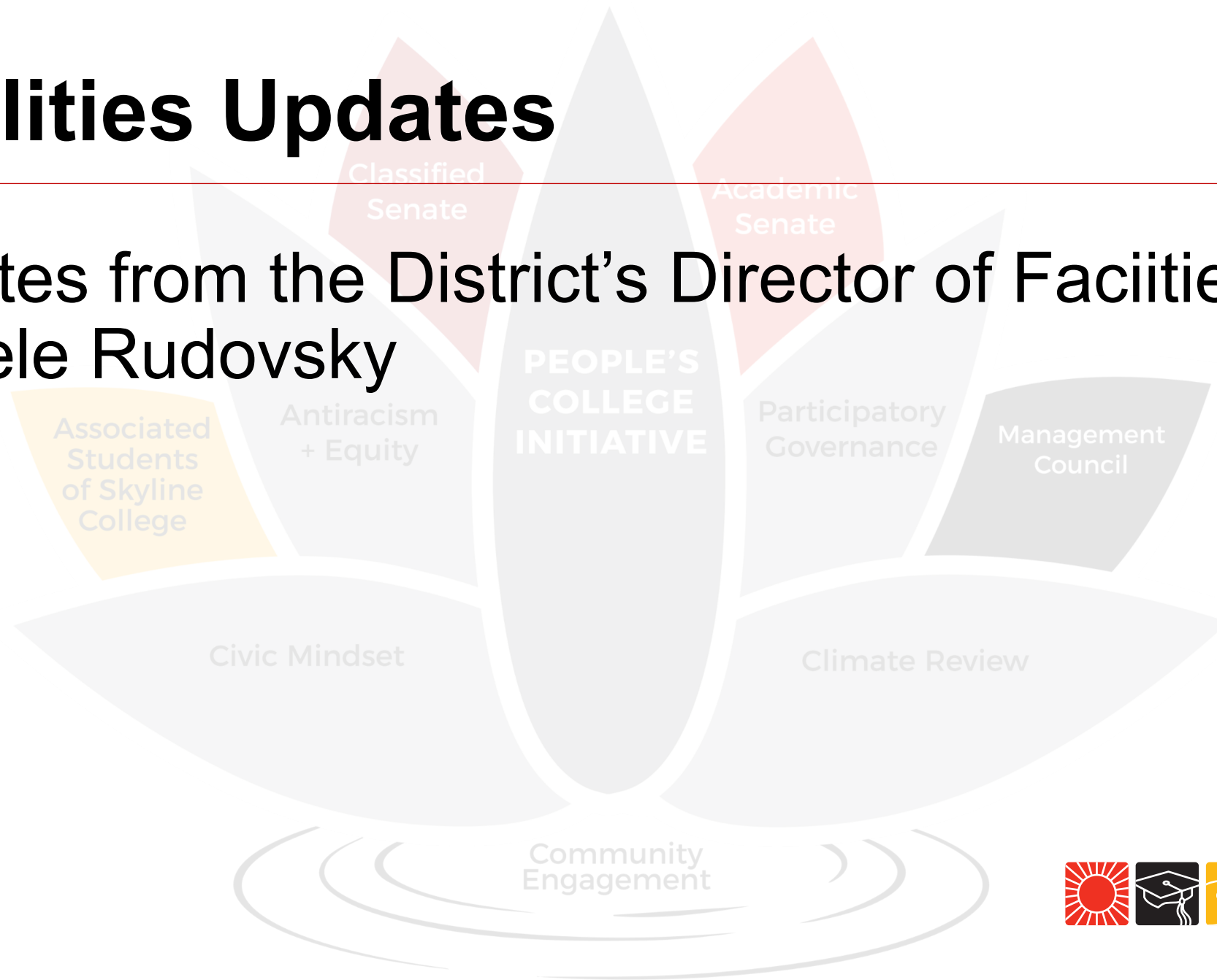
Health Updates

Updates from the District's Covid-19 Health Expert: Ray Hernandez



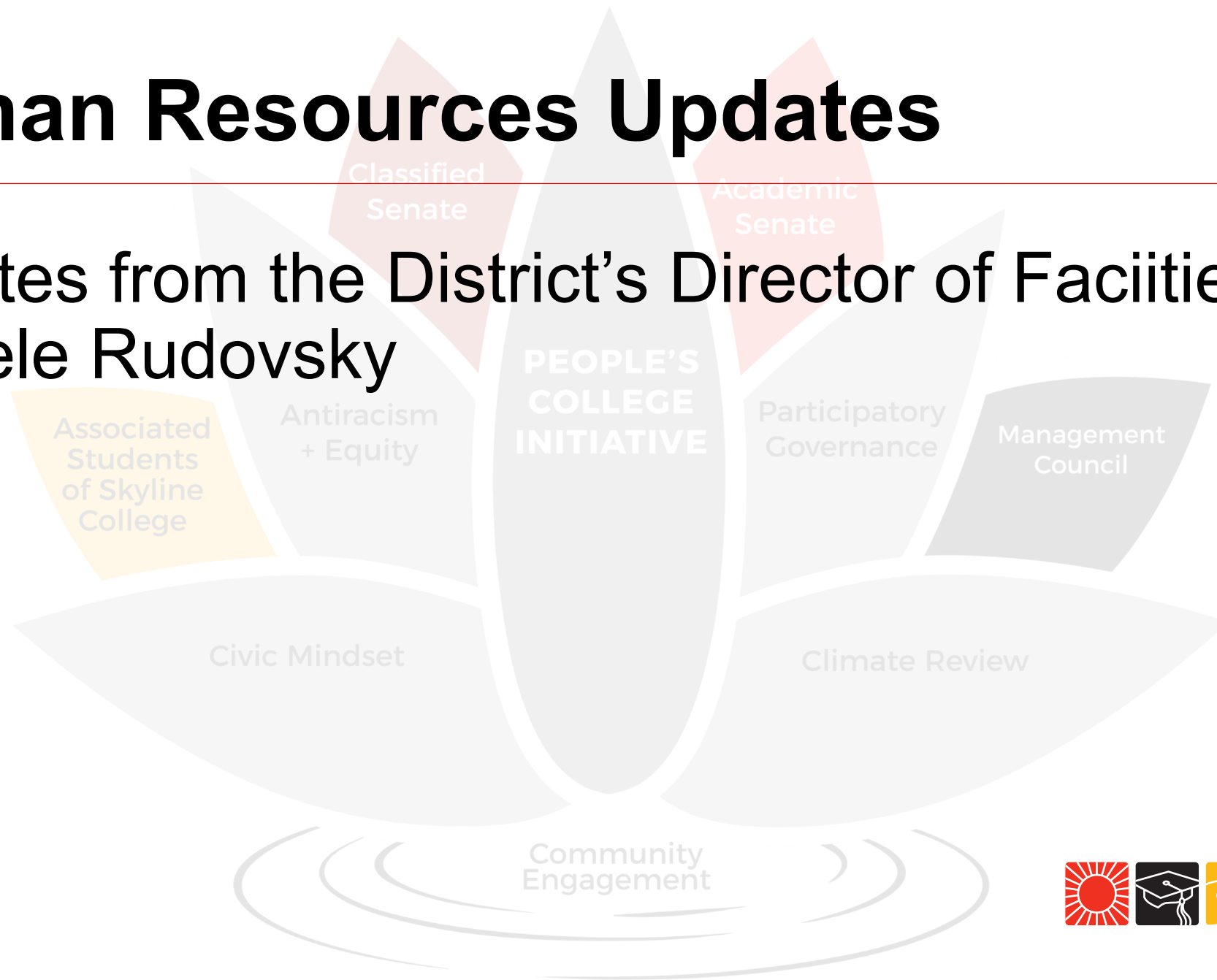
Facilities Updates

Updates from the District's Director of Facilities:
Michele Rudovsky



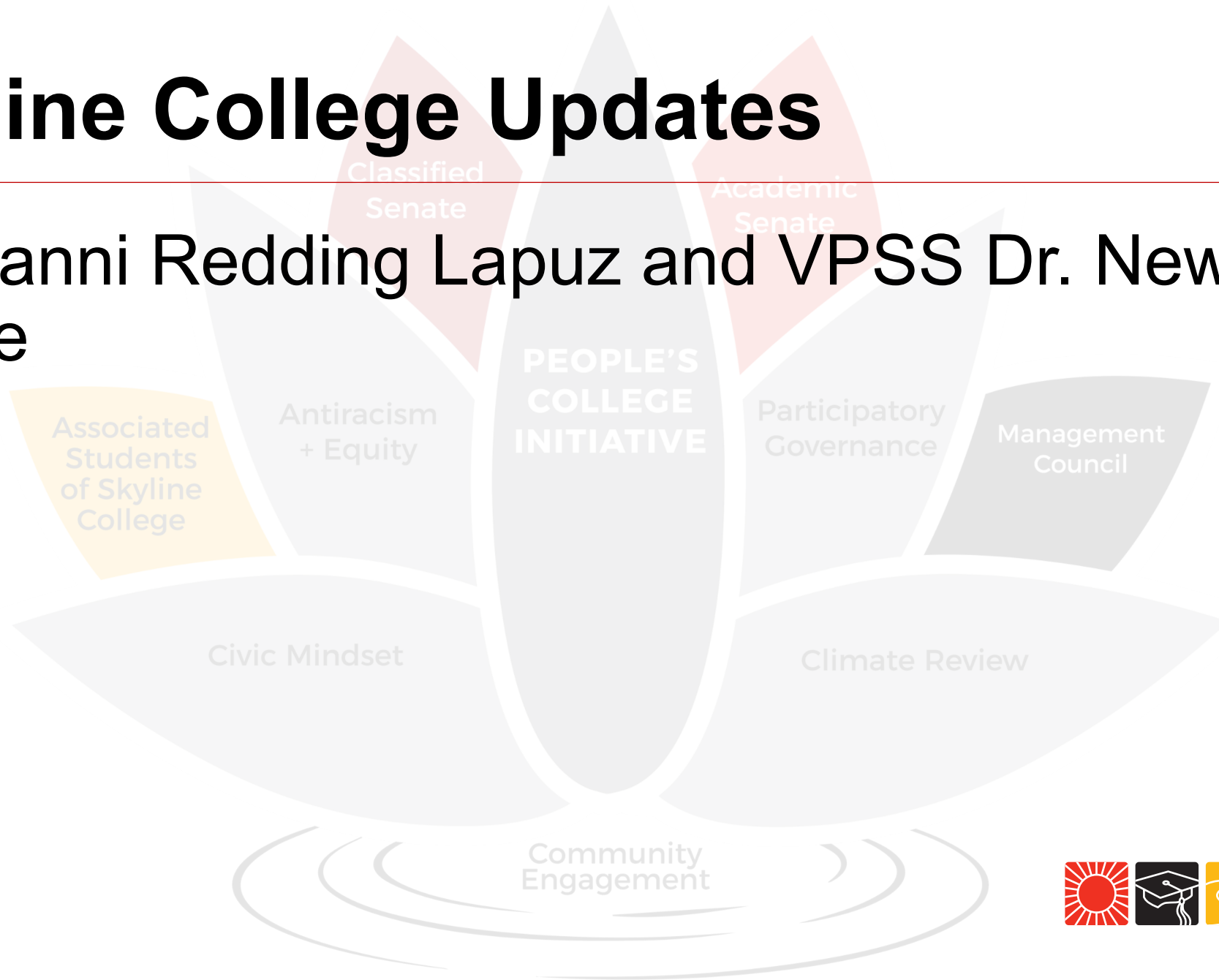
Human Resources Updates

Updates from the District's Director of Facilities:
Michele Rudovsky



Skyline College Updates

VPI Danni Redding Lapuz and VPSS Dr. Newin Orante



Concerns from Academic Senate

- More “mask fairies” and back-end support for masking enforcement?
- Timeline for more freely available testing on our campuses? What is the plan?
- How are our weekend and evening students getting access to the bookstore masks?
- How can we ease the very confusing and difficult enrollment process.
- Addressing the parking fee barrier for students.



Classified Senate

Academic Senate

Q & A

with full panel

Associated Students of Skyline College

Antiracism Initiative

Participatory Governance

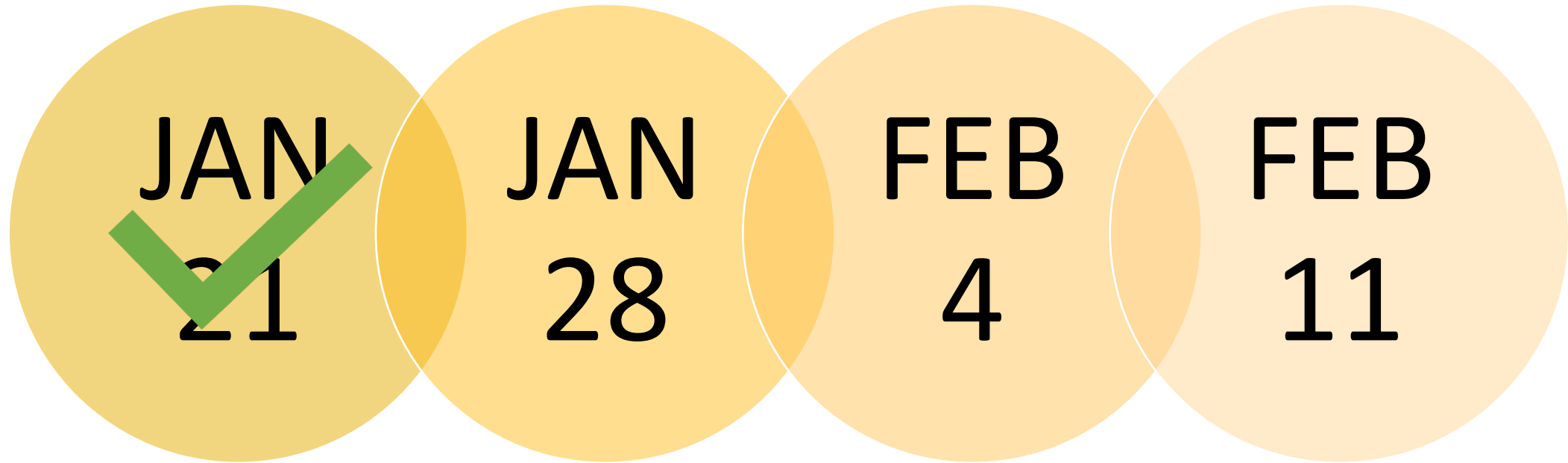
Management Council

Civic Mindset

Climate Review



2022 Recurring Briefings



Look for a new link each week!