

Date	Respondent	Answer
5/30/2013	Anonymous	San Francisco
5/30/2013	Anonymous	San Francisco
5/30/2013	Anonymous	Daly city
5/30/2013	Anonymous	Menlo park
5/30/2013	Anonymous	San Fransico International Airport
5/31/2013	Anonymous	mountain view
5/31/2013	Anonymous	San Francisco
5/31/2013	Anonymous	San Francisco
5/31/2013	Anonymous	Danville
5/31/2013	Anonymous	San Bruno
5/31/2013	Anonymous	San Bruno
5/31/2013	Anonymous	Daly City
6/1/2013	Anonymous	Millbrae
6/2/2013	Anonymous	Daly City
6/2/2013	Anonymous	Foster City
6/2/2013	Anonymous	San Francisco
6/10/2013	Anonymous	South San Francisco

State:

Not answered: 45

Date	Respondent	Answer
5/30/2013	Anonymous	CA
5/30/2013	Anonymous	California
5/30/2013	Anonymous	California
5/30/2013	Anonymous	California
5/30/2013	Anonymous	California
5/31/2013	Anonymous	ca
5/31/2013	Anonymous	CA
5/31/2013	Anonymous	California
5/31/2013	Anonymous	California
5/31/2013	Anonymous	CA
5/31/2013	Anonymous	California
5/31/2013	Anonymous	California
6/1/2013	Anonymous	California
6/2/2013	Anonymous	CA
6/2/2013	Anonymous	CA
6/2/2013	Anonymous	California
6/10/2013	Anonymous	CA

Country:

Not answered: 46

Date	Respondent	Answer
5/30/2013	Anonymous	USA
5/30/2013	Anonymous	United States
5/30/2013	Anonymous	United States
5/30/2013	Anonymous	USA
5/30/2013	Anonymous	USA
5/31/2013	Anonymous	usa
5/31/2013	Anonymous	United States
5/31/2013	Anonymous	USA
5/31/2013	Anonymous	United States of America
5/31/2013	Anonymous	United States of America
5/31/2013	Anonymous	United States
5/31/2013	Anonymous	USA
6/1/2013	Anonymous	United States
6/2/2013	Anonymous	USA
6/2/2013	Anonymous	United States
6/10/2013	Anonymous	USA

1.1.12. P1Q12

Job Title/Position of Job Duties:

Question type: Open ended

Number of responses: 17

Number of respondents: 62

Not answered: 45

Date	Respondent	Answer
5/30/2013	Anonymous	Administrative Associate
5/30/2013	Anonymous	Extended Day Teacher/Enrichment Teacher
5/30/2013	Anonymous	Retail sales associate
5/30/2013	Anonymous	Campus supervisor
5/30/2013	Anonymous	Unit Trainer- Training new hire employees and current employees
5/31/2013	Anonymous	teacher-
5/31/2013	Anonymous	Senior Gift Processor. process gifts and pledges, conduct legal research of IRS codes and regulation to verify compliance, handle confidential documents, address departmental inquiries regarding donations, pledges and accounts, generate donor receipts and acknowledgment letters, supervise student assistants, train staff and student assistants on navigating and updating Ellucian database, conduct extensive research on alumni, donors and prospects (i.e. school records, contact information), calendar meetings, deadlines, sick and vacation time for department team, and organize and scan document into computer
5/31/2013	Anonymous	Maintenance Controller- (30 years Employee for the City) Command Sergeant Major- (35 years as Active Reserve-deployed to Afghanistan 2006-2007 and Iraq- 2008-2009)
5/31/2013	Anonymous	Marketing Director and Sales Associate
5/31/2013	Anonymous	Associate Teacher/ Duties: Implement curriculum; Assist in maintaining an orderly, attractive learning environment; Assist with daily set-up and clean-up, indoors and outdoors; communicate with Parents; supervise Teacher Assistants.
5/31/2013	Anonymous	Orchestra Instructor: Teaching children from 3rd-8th grade the fundamentals of music as well as how to play a woodwind instrument.
5/31/2013	Anonymous	Public Safety Officer
6/1/2013	Anonymous	Banquet Server/ Bartender
6/2/2013	Anonymous	Cashier
6/2/2013	Anonymous	Medical Biller for small billing company.
6/2/2013	Anonymous	Service Manager
6/10/2013	Anonymous	Special Education Aide

1.1.13. P1Q13Salary (optional):

Question type: Open ended

Number of responses: 4

Number of respondents: 62

Not answered: 58

Date	Respondent	Answer
5/30/2013	Anonymous	\$15.25
5/31/2013	Anonymous	14.00
5/31/2013	Anonymous	000,000.00
5/31/2013	Anonymous	\$12

1.1.14. P1Q14What is the date you accepted or started this job:

Question type: Open ended

Number of responses: 17

Number of respondents: 62

Month

Not answered: 45

Date	Respondent	Answer
5/30/2013	Anonymous	October
5/30/2013	Anonymous	August
5/30/2013	Anonymous	January
5/30/2013	Anonymous	August
5/30/2013	Anonymous	June
5/31/2013	Anonymous	04
5/31/2013	Anonymous	July
5/31/2013	Anonymous	October
5/31/2013	Anonymous	January
5/31/2013	Anonymous	August
5/31/2013	Anonymous	September
5/31/2013	Anonymous	April
6/1/2013	Anonymous	June
6/2/2013	Anonymous	April
6/2/2013	Anonymous	June
6/2/2013	Anonymous	Jan
6/10/2013	Anonymous	October

Day

Not answered: 50

Date	Respondent	Answer
5/30/2013	Anonymous	10
5/30/2013	Anonymous	20
5/30/2013	Anonymous	28
5/30/2013	Anonymous	15
5/31/2013	Anonymous	10
5/31/2013	Anonymous	25
5/31/2013	Anonymous	18
5/31/2013	Anonymous	20
6/1/2013	Anonymous	13
6/2/2013	Anonymous	17
6/2/2013	Anonymous	10
6/10/2013	Anonymous	15

Year

Not answered: 45

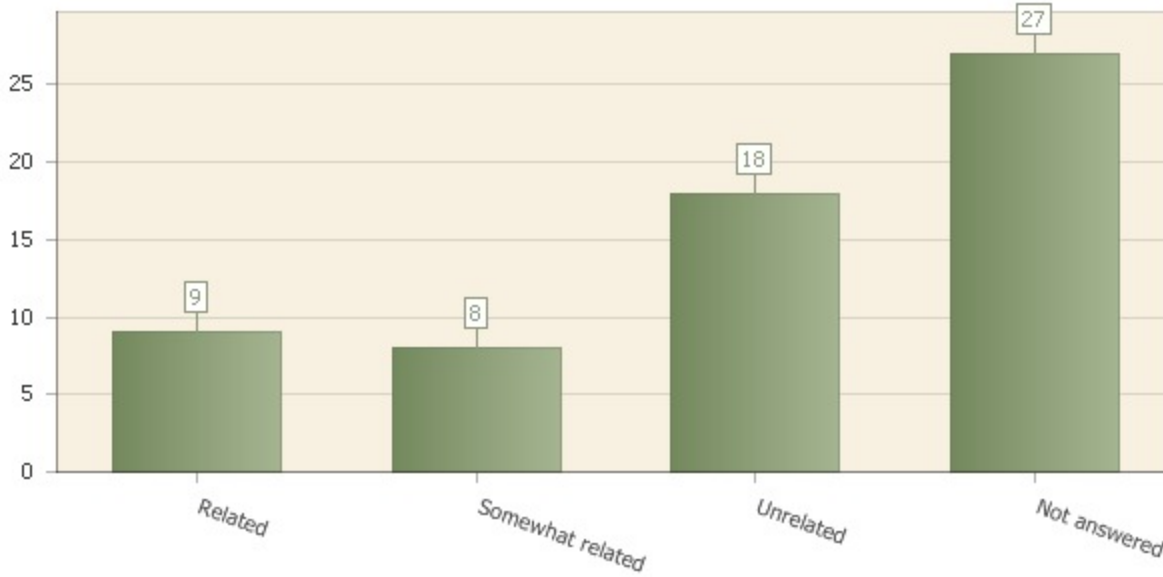
Date	Respondent	Answer
5/30/2013	Anonymous	2011
5/30/2013	Anonymous	2011
5/30/2013	Anonymous	2011
5/30/2013	Anonymous	2011
5/30/2013	Anonymous	2011
5/31/2013	Anonymous	2012
5/31/2013	Anonymous	2007
5/31/2013	Anonymous	1983
5/31/2013	Anonymous	2012
5/31/2013	Anonymous	2012
5/31/2013	Anonymous	2012
5/31/2013	Anonymous	2013
6/1/2013	Anonymous	2010
6/2/2013	Anonymous	2011
6/2/2013	Anonymous	2013
6/2/2013	Anonymous	2013
6/10/2013	Anonymous	2009

Is this job related to the program you graduated from at Skyline College?

Question type: Multiple choice

Number of responses: 35

Number of respondents: 62



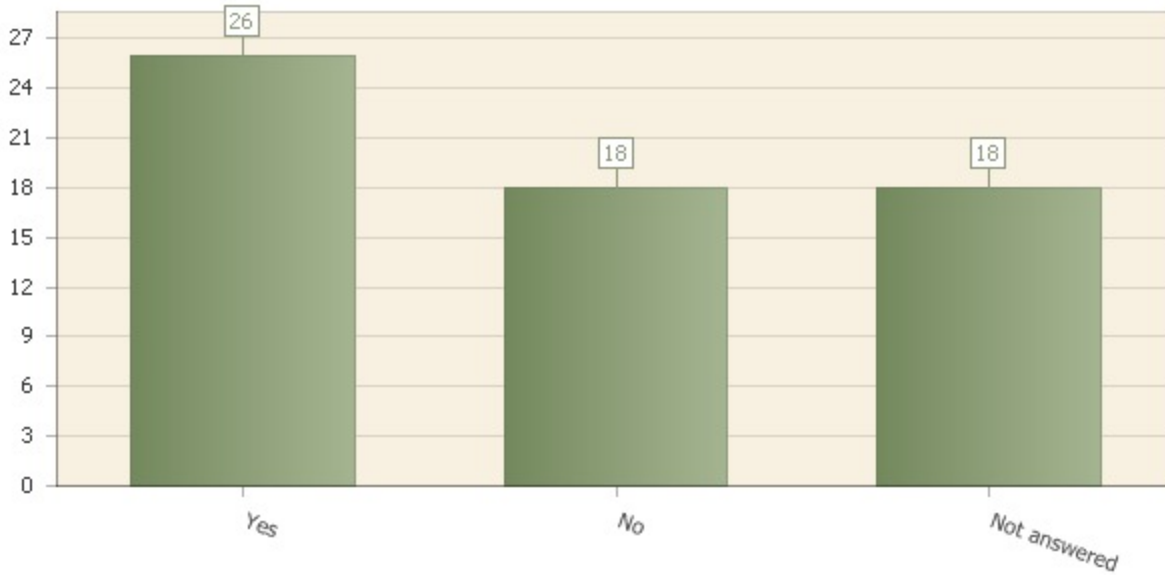
Answer	Count	Percent answer
Related	9	14.5%
Somewhat related	8	12.9%
Unrelated	18	29.0%
Not answered	27	43.5%

Are you actively seeking a related job?

Question type: Multiple choice

Number of responses: 44

Number of respondents: 62



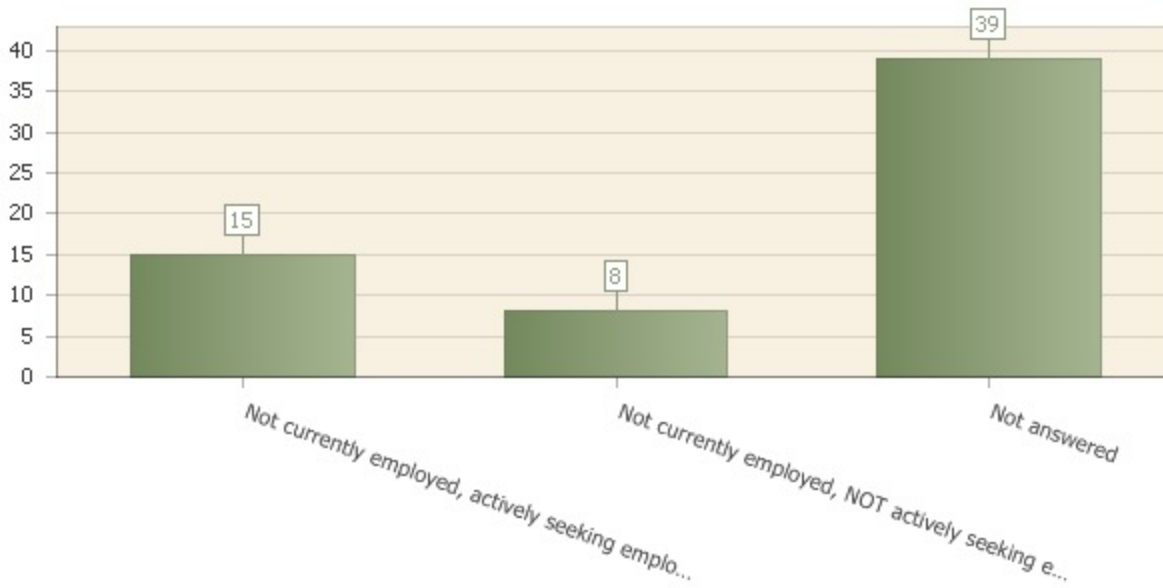
Answer	Count	Percent answer
Yes	26	41.9%
No	18	29.0%
Not answered	18	29.0%

Which of the following best describes your status? (please select only ONE response)

Question type: Multiple choice

Number of responses: 23

Number of respondents: 62



Answer	Count	Percent answer
Not currently employed, actively seeking employment	15	24.2%
Not currently employed, NOT actively seeking employment	8	12.9%
Not answered	39	62.9%

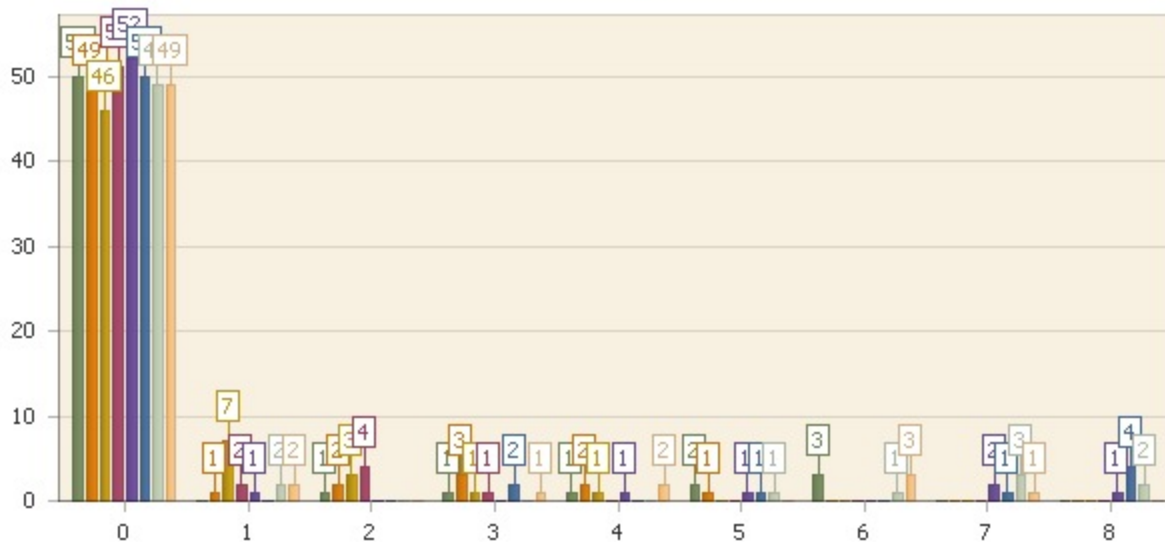
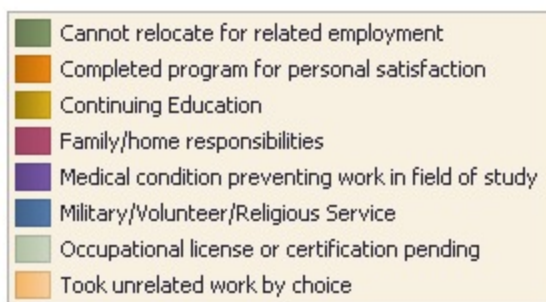
Reasons why you may not be seeking a related job may include the following: Please rank the following responses that describe your situation. Rank items from 1 to 8 (where 1 is the highest ranking). If the item does not apply to you please leave it blank.

Question type: Rating & Ranking

Number of responses: 58

Number of respondents: 62

Scale: 1 – 8; 0: NA



Answer	Mean	Std dev	Count and % Rating 0	Count and % Rating 1	Count and % Rating 2	Count and % Rating 3	Count and % Rating 4	Count and % Rating 5	Count and % Rating 6
Occupational license or certification pending	0.9	2.3	49 (84.5%)	2 (3.4%)	0 (0%)	0 (0%)	0 (0%)	1 (1.7%)	1 (1.7%)
Medical condition preventing work in field of study	0.6	1.8	52 (89.7%)	1 (1.7%)	0 (0%)	0 (0%)	1 (1.7%)	1 (1.7%)	0 (0%)
Completed program for personal satisfaction	0.5	1.2	49 (84.5%)	1 (1.7%)	2 (3.4%)	3 (5.2%)	2 (3.4%)	1 (1.7%)	0 (0%)
Cannot relocate for related employment	0.6	1.7	50 (86.2%)	0 (0%)	1 (1.7%)	1 (1.7%)	1 (1.7%)	2 (3.4%)	3 (5.2%)
Family/home responsibilities	0.2	0.7	51 (87.9%)	2 (3.4%)	4 (6.9%)	1 (1.7%)	0 (0%)	0 (0%)	0 (0%)
Continuing Education	0.3	0.8	46 (79.3%)	7 (12.1%)	3 (5.2%)	1 (1.7%)	1 (1.7%)	0 (0%)	0 (0%)
Military/Volunteer/Religious Service	0.9	2.3	50 (86.2%)	0 (0%)	0 (0%)	2 (3.4%)	0 (0%)	1 (1.7%)	0 (0%)
Took unrelated work by choice	0.7	1.8	49 (84.5%)	2 (3.4%)	0 (0%)	1 (1.7%)	2 (3.4%)	0 (0%)	3 (5.2%)